



Morongo Valley-Big Morongo Canyon Preserve



An AVA Sanctioned Year Round Event

This walk offers a 5K and a 10K option and is rated 1B. The trail is on dirt and boardwalks over free-flowing water and through a lush area of willows as well as desert terrain. You will be surprised to find this lovely green area in the desert hills. The 10K does have one hill. The trail is through a wildlife area that is a favorite of bird watchers. Weather can be very warm so plan to walk early and carry water. Dogs are NOT allowed on the trail

Walk Registration:

Registration takes place online using that AVA Online Start Box, on my.ava.org. Follow the instructions provided to create a user account and sign the AVA waiver (one time). Instructions for payment are also included. Download the directions and print as needed. The POC does not provide event directions or accept alternate payment methods.

Walk Completion and Walk Credit:

Once you have physically completed the walk, please login to your Online Start Box account click on the "My Start Box" tab, then the "Finish Table" tab, then click on "Go to Finish Table" button for the event you have completed. Use the displayed entry form to submit the date and distance of your walk as well as select applicable AVA Special Programs to generate stamped "virtual" insert cards that you may choose to print out.

Table of Contents:

Use the following table to guide what portion of this document you may wish to print out.

Section Contents	Pages
Introduction, Walk Registration/Completion, and Table of Contents	1
Driving Directions Emergency numbers	2
5 K Directions and Map	3&4
10 K Directions and Map	5&6

Driving Directions to Start

Big Morongo Canyon Preserve-11055 East, Morongo Valley, CA 92256. Take I-10 E from Los Angeles towards Desert Communities. Exit Hwy 62 (29 Palms Highway) Drive North about

11 $\frac{1}{2}$ miles and turn right on East. Follow Preserve signs to start point. The start/finish is under awning at large trailer belonging to park ranger. There are souvenir patches available from the Ranger. Bathrooms are available at start point.

Please use the Online Start Box (OSB) complete the event. The sponsoring club only receives credit for an OSB participation when an OSB registration has been completed online by entering your participation date, distances, and any special programs using the OSB.

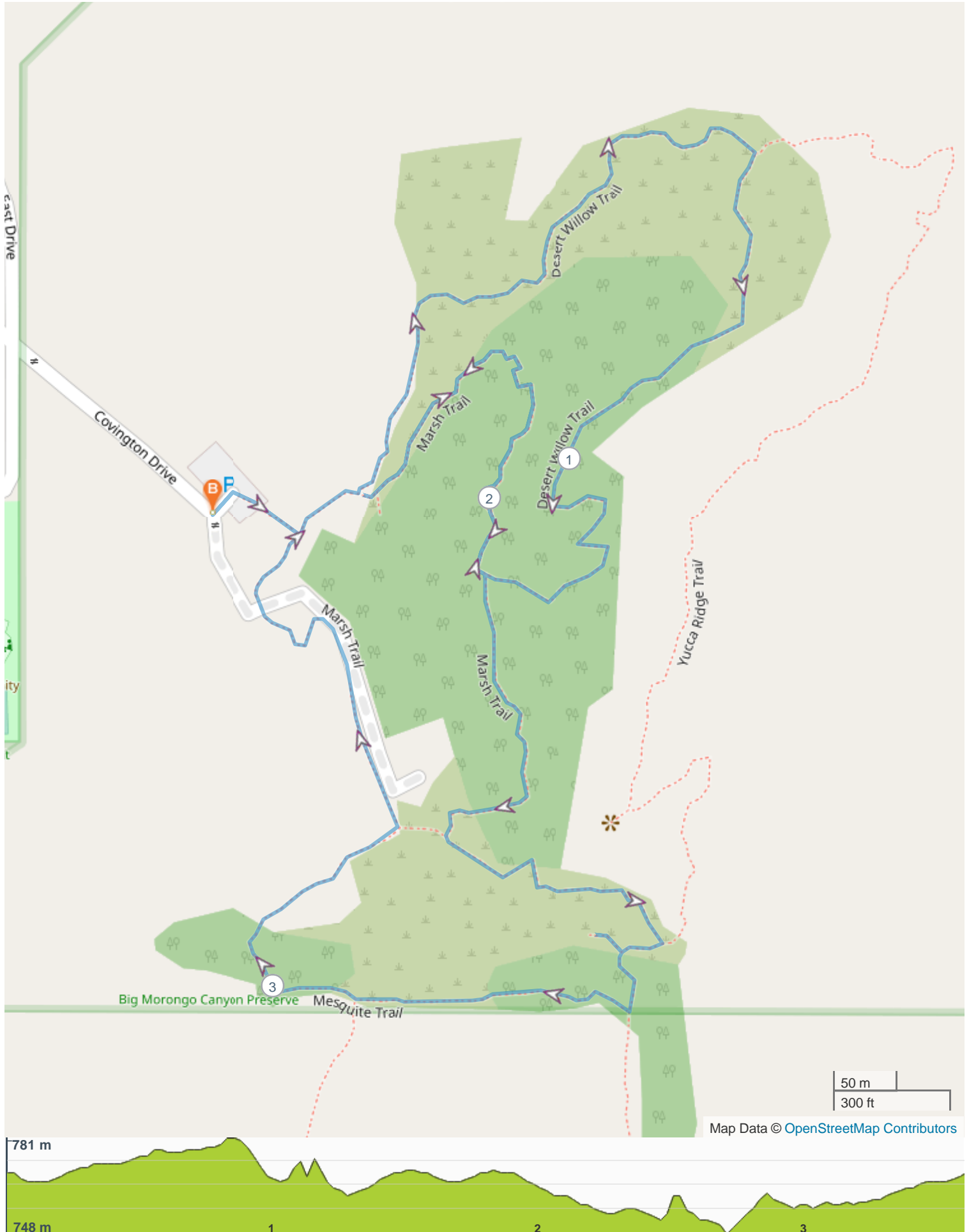
IN CASE OF EMERGENCY DIAL 911

For event related questions contact Sue Obradotitz at Osuejoe2@aol.com or (951) 333-6806

These walk directions and maps may only be used in conjunction with a signed American Volkssport Association athletic waiver. All other uses are prohibited

Copyright 2023 Low Desert Roadrunners

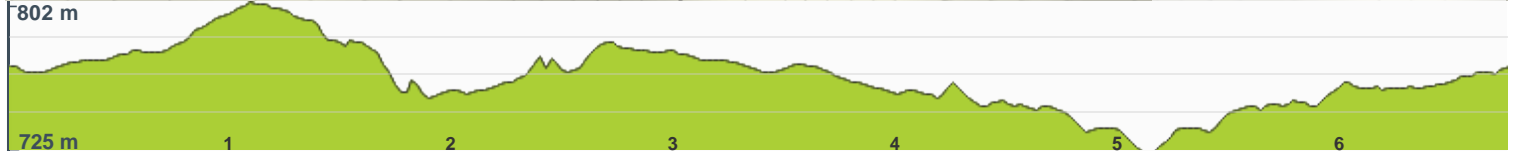
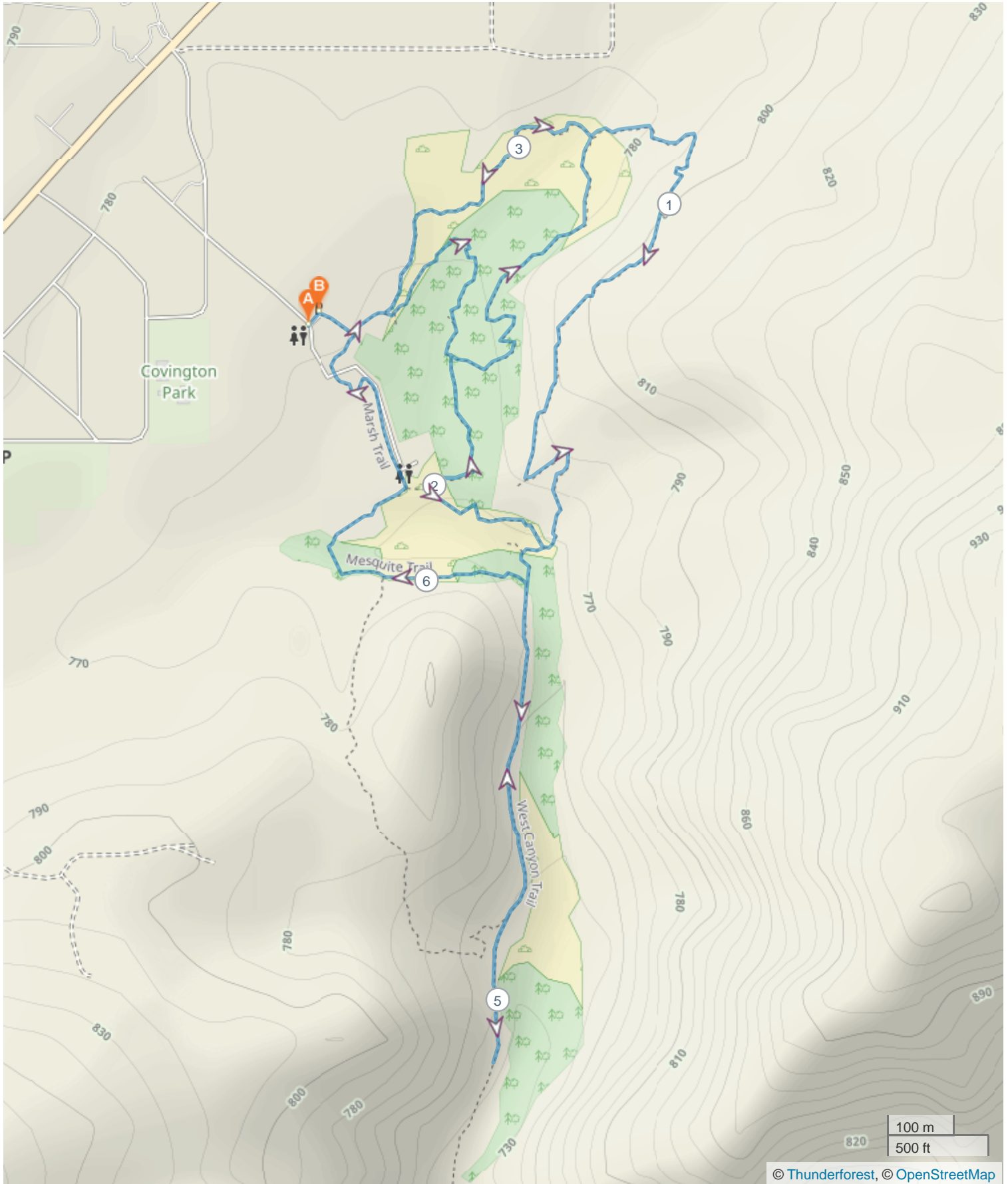
Morongo 5K



ROUTE DIRECTIONS

No	Km	Turn	Directions
1	0.001	➔	Head toward the boardwalk to Marsh Trail
2	0.087	⬅	Turn left onto Marsh Trail. Follow this meandering dirt trail, crossing over a small bridge where you will intersect with Yucca Ridge trail
3	0.679	➔	Do not go on the Yucca Ridge Trail. Turn right onto Desert Willow Trail until it intersects with Marsh Trail
4	1.287	↗	Keep right onto Marsh Trail until you get to where you can see the breezeway and the Desert Willow Trail taking off to the right
5	1.674		At this point TURN AROUND and retrace your steps on the Marsh Trail until you get back to the Desert Willow Trail. Stay right continuing past the #4 signpost on the Marsh Trail heading toward the Mesquite Trail on the left
6	2.337	⬅	Turn left onto Mesquite Trail all the way to the 'T' intersection of the Mesquite/Yucca Ridge Trail intersection.
7	2.562	↘	Go right a short distance to the intersection of the Mesquite and Canyon Trails intersection. There are metal pipes on the trail here
8	2.702	➔	Turn right staying on the Mesquite Trail as you wander along the trail. You will pass an old rusty car off to the side
9	2.702	➔	Continue along passing a rail fence. Turn slightly right on the trail as you get to the second rail fence. Go down into a small canyon and back up the other side
10	3.190	⬅	Turn left onto Marsh Trail
11	3.514	⬅	Turn left onto Marsh Trail
12	3.601		Finish where you started

Morongo 10K



ROUTE DIRECTIONS

No	Km	Turn	Directions
1	0.000		Head toward the boardwalk
2	0.088	←	Turn left onto Marsh Trail
3	0.150	←	Turn left onto Desert Willow Trail
4	0.682	←	Follow the dirt trail over a small bridge. Turn left onto Yucca Ridge Trail. , up a challenging hill. (Only hard part of the walk) Great view from the top
5	1.509	←	Continue left onto Yucca Ridge Trail
6	1.761	→	Turn right onto Mesquite Trail through the recovering burn area from 2004
7	1.986	→	Turn right onto Marsh Trail until you reach Desert Willow Trail
8	2.253	↘	Turn sharp right onto Desert Willow Trail until you reach the Yucca Ridge intersection. (Note the bridge on your left)
9	2.846	←	Turn left (over the bridge) onto Desert Willow Trail all the way back to the boardwalk (Marsh Trail)
10	3.378	→	Continue on the boardwalk until the #4 signpost. Turn right onto Marsh Trail
11	3.781	→	Stay on Marsh Trail until you get to the intersection of the Mesquite Trail.
12	4.048	←	Turn left onto Mesquite Trail to the "T" intersection
13	4.273	↘	Turn sharp right onto Mesquite Trail/Canyon Trail. (Metal pipes here)
14	4.307	↖	Turn slight left onto Canyon Trail
15	4.875		As you walk down the canyon you will pass a rail fence and another trail going off to the right
16	5.067		When you finally hear the sound of a small waterfall on your left and see a tall dead tree ahead, you can turn around and head back up the canyon to the metal pipes
17	5.838	←	Turn left onto Mesquite Trail. The trail will pass an old rusted out car.
18	6.325	↗	Continue passing a rail fence. Turn slight right onto Marsh Trail at the second rail fence going down into the small canyon
19	6.327	→	Follow the trail back up the other side to the top. Stay to the right of the foundation of the barn that burned in the 2004 fire.
20	6.651	←	Turn left onto Marsh Trail
21	6.751		Follow the boardwalk all the way back to the breezeway and turn left to the start point