

PENN DUTCH PACERS VOLKSMARCH CLUB's

Seasonal Event AT17/Y0342

April 1 - November 15, 2017

Ricketts Glen State Park Walk

6/7/13K

Waterfalls, and Three PA Counties

Table of Contents

Page 1 – General Instructions

Page 2 – Maps for Getting to Start Point

Page 3 & 4 – Walk Instructions

Page 5 – Map of Walking Route

Page 6 – page for the KSV A YRE 2017 Booklet describing the route

Page 7 – PDP YRE 2017 listing

General Instructions:

Registration:

- 1) Register at the OLSB
- 2) pay the sanction fee, and
- 3) download these instructions.

Driving:

Start Point for the walk is the Lake Rose Trailhead at the Ricketts Glen State Park.
Address of Ricketts Glen State Park is 695 State Route 487, Benton, PA 17814

Driving Directions: From I-80, Take Route 487 North (Eastbound exit 236, WestBound Exit) though the towns of Benton and Red Rock. After 487 turns to the left to split from 118 in Red Rock, the road will go steeply up hill. After it flattens out, the entrance to the park is on the right. Turn Right into the Park and then turn right again, pass the entrance to the visitor center. After passing the Lake on your left, turn right at the next intersection towards the Lake Rose Trailhead. Park at the Lake Rose Trailhead. Restrooms are available at this parking lot. (see maps on next page)

Completion instructions:

Follow the walking instructions for the route and length you wish to do. The 6K passes the waterfalls. The 7K doesn't pass the waterfalls but into two additional counties (Columbia and Sullivan). The 13K combines both routes. When finished, Be sure to Log back into the Online Start Box, to finish/complete the walk.

A Award

If you wish to receive the A award Patch showing one of the waterfalls as part of the PA State Park program, please send a check for \$5.50 (\$5.00 for the patch and \$0.50 for postage/envelope) made out to **Penn Dutch Pacers** along with a stated request for the Ricketts Glen patch to:

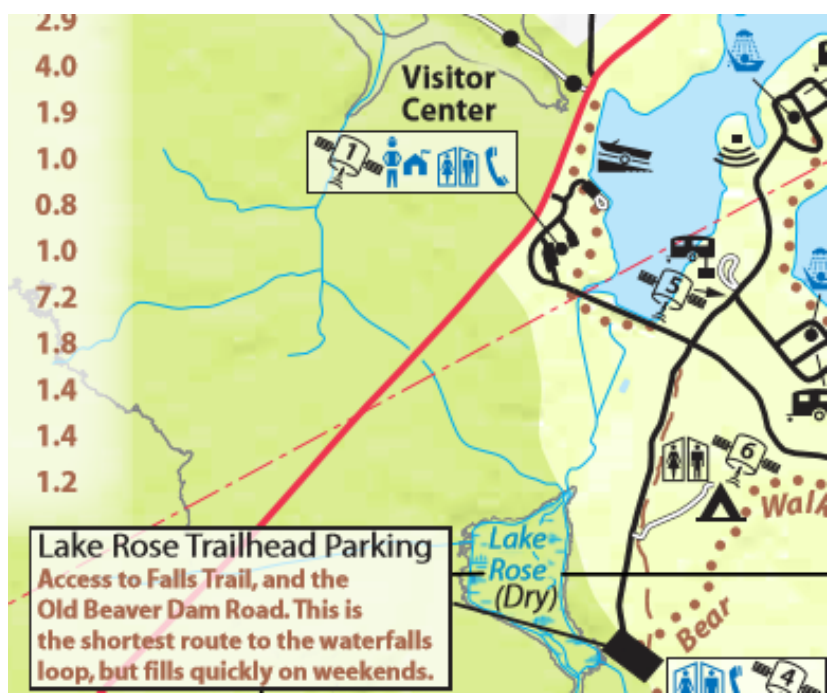
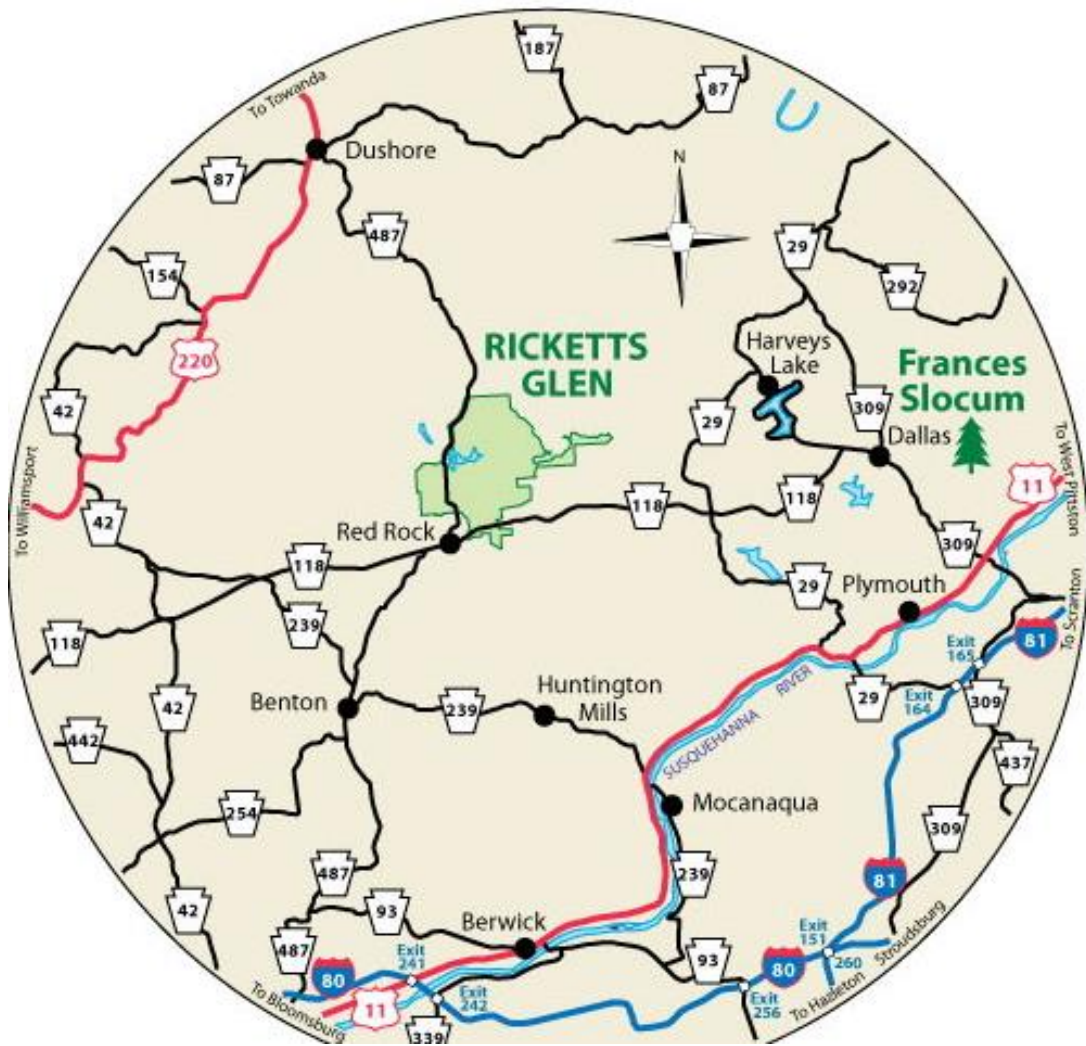
Penn Dutch Pacers
C/O David Barber
112 Olde Field Drive
Lititz, PA 17543

Special Events:

Bridges – there are a few bridges across the streams on the falls trail.
You'll Never walk Alone – Ricketts Glen is named for Colonel Robert Bruce Ricketts.

History:

Robert Bruce Ricketts fought in the Civil War. He led the Union (Army of the Potomac) Battery F during the Battle of Gettysburg and was a colonel by the time he was discharged at the end of the war. The 1261 acres of land that is the Ricketts Glen State Park was once part of a larger acreage of land owned by Colonel Ricketts.



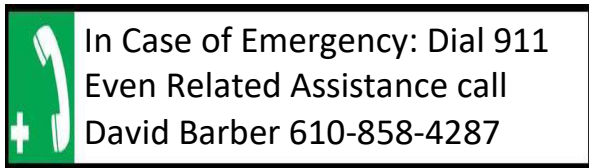
Ricketts Glen Volksmarch (6K, 8K,13K options)

6K and 13K

1. Leave the parking lot on the trail near the sign about the falls to the right of the information shelter.
2. **Follow** this trail to the intersection with the Highland Trail.
3. Turn **Left** on the Highland Trail.
4. **Follow** the Highland trail to its end (do not take the shortcut trail to the left)
5. Turn hard **Right** on the Glen Leigh Trail. (Bench at base of tree & falls Trail map)
6. **Pass** the Onondaga falls (15'), the F.L. Ricketts falls (38') the Shawnee falls (30'), the Huron Falls (41') the Ozone falls (60') the R.B. Ricketts Falls (36'), the B. Reynolds (40') and the Wyandot (15') to Water Meet.
7. At this point you will **cross** a bridge to a T intersection with an informational sign across the trail. (The Glens Natural Area Registered Natural Landmark.
8. Turn **right** on the Ganoga Glen trail and head upstream toward Lake Rose.
9. **Pass** the Erie Falls (47'), the Tuscarora (47'), the Conestoga (17') the Mohican (39') the Delaware (37') the Shawnee (12') the Ganoga (94')
10. **Stay** on the Ganoga Glen Trail (don't take the Old Beaver Dam Rd trail to the left)
11. **Pass** the Cayuga (11'), the Oneida (13') and the Mohawk (37') to the Trail intersection.
12. For the **6 K**, turn **right** and follow this trail back to the parking lot (Sign to Right for Lake Rose Parking Lot 0.3mi).
13. For the **13K**, turn **left** and follow the trail to the Old Beaver Dam road Trail.
14. **Stay to the Right** when the trail T's with Gonoga. You will see a sign "To Rt 487" on the correct trail.
15. Turn **right** on the Old Beaver Dam Road Trail to the point where the trail intersects Route 487.

- 16. Carefully **cross** Route 487 and turn **left** onto the spur to the Grand View Trail.
 - 17. At Grandview trail, Turn **Right**.
 - 18. **Follow** the Grandview trail in a counter clockwise direction (it is a loop). Watch for the trail to turn sharply left at a point where the “old road continues straight”. You will cross into Sullivan County and then the trail will cross into Columbia County for a short distance before heading back in to Luzerne County. You will then pass the fire tower and the overlook.
 - 19. Upon return to Route 487. Turn **left** to return to the road crossing, cross 487 and turn **left** onto the Olde Beaver Dam Road Trail to retrace your way back to the falls trail.
 - 20. Turn **left** and follow the trail back to parking lot (Stay to the left at the next two intersections)
- 7K (three county, but doesn't pass the falls.)**
- 1. **Leave** the Parking lot on the trail near the sign about the falls to the right of the information shelter.
 - 2. At the intersection with the Highland trail, **take** the trail to the right.
 - 3. At the next intersection, **turn right** on the trail towards the Old Beaver Dam road and then **follow** the 13K instructions above at #14.

These walk directions and maps may only be used in conjunction with a signed American Volkssport Association athletic waiver. All other uses are prohibited.



Thank you for walking the Ricketts Glen Seasonal Volksmarch Event.

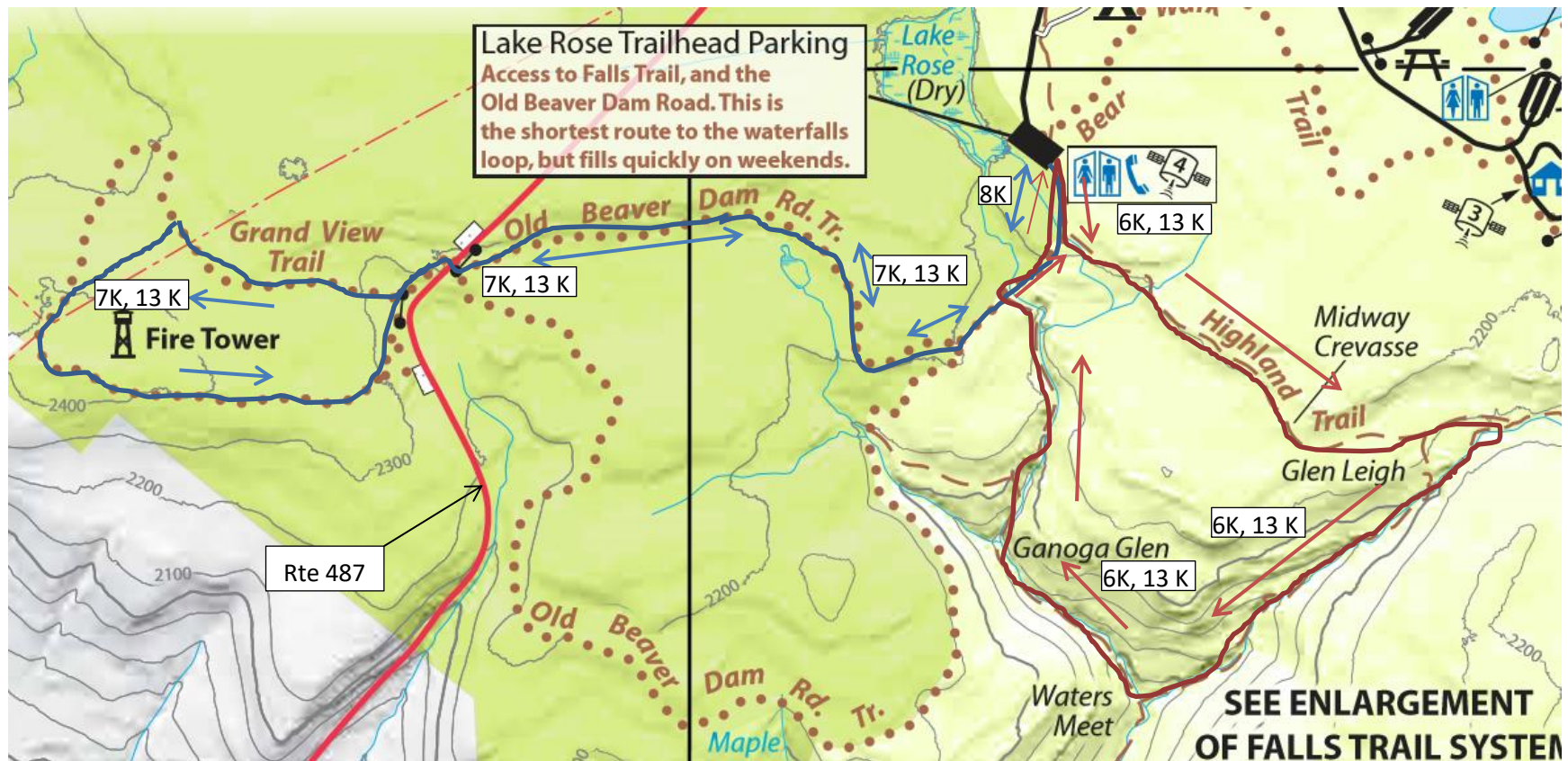
Ricketts Glen Routes

6 and 13 K routes take Highland Trail to Glen Leigh to Waters Meet to Ganoga Glen.

6K then returns to the parking lot while the

13 K turns left onto Old Beaver Dam Road to the Grandview Trail and then returns.

The 7K takes trail from Parking Lot to turn for Old Beaver Dam Road to the GrandView Trail and then returns




Event
Info from
the KSVB
booklet

PENN DUTCH PACERS
Ricketts Glen State Park
Benton, PA

Seasonal Walk
April 1 - November 15, 2017

13K/7K/6K Rated 4C
106364 AT17/Y0342



Walk qualifies for the Bridges and You'll Never Walk Alone Special Programs.

Park: The park was named for R. Bruce Ricketts, an officer in the American Civil War. He owned 80,000 acres in the area, but spared the old growth forests in the glen from clearcutting. Ricketts Glen State Park harbors Glens Natural Area, a National Natural Landmark. Hike the Falls Trail System and explore the Glens, which boasts a series of wild, free-flowing waterfalls, each cascading through rock-strewn clefts in this ancient hillside. The 94-foot Ganoga Falls is the highest of 22 named waterfalls. Old growth timber and diverse wildlife add to the beauty. Ricketts Glen State Park is one of the most scenic areas in Pennsylvania. This large park is comprised of 13,050 acres in Luzerne, Sullivan, and Columbia counties.

Trails: **6K** trail has 17 Amazing waterfalls along a steep but well-maintained trail which is the most difficult hiking in the park. The waterfalls trail is a 3.2-mile loop. The beautiful waterfalls range in heights from 11 feet to 94 feet. The scenery is well worth the effort, however, the terrain is rocky, slippery and descends steeply on both the Ganoga and Glen Leigh sides. Hikers should take extra precautions with trail conditions, wear proper footwear, stay on the trail and be in good physical condition. **7K** trail is a loop rated 2B that goes to the highest point in the park and goes through 3 counties - Columbia, Sullivan and Luzerne. It follows trails through the woods and passes a fire tower. **13K** trail combines the two routes. Difficulty of the trail increases during and after inclement weather and the falls trail should be avoided during icy conditions. Trail rated 4C in good weather, 4D for bad weather.

Registration Point:
WEB REGISTRATION ONLY
(www.cva4u.org)

Procedures: Please use the online start box

provided by the California Volkssport Assn. website (www.cva4u.org). Follow the left side link, "Online Start Box", and the instructions provided to sign a waiver and register for this event. Payments for event credit and directions use PayPal. The directions and insert cards are PDF's that you can download and print as needed. The POC does not provide event directions or accept alternate payment methods. The entire online process should take less than 10 minutes for a first time user.

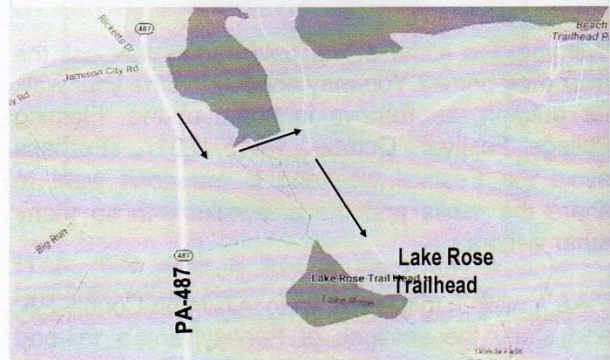
Starting Times: Dawn - dusk. **Note:** the Park may close access to the Falls Trail during winter or flooding conditions. Call the State Park Office at 570-477-5675 for information.

Award and Fees: "A" award is a 3x3 inch embroidered patch featuring one of the many waterfalls in the park. Award and IVV Credit is \$7.00 IVV. Credit Only is \$3.00. You may participate in all events FREE. All are welcome.

Disclaimer: Neither the sponsor (Penn Dutch Pacers Volksmarch Club, Inc.) nor Ricketts Glen State Park are liable for accidents, theft or material damage. Every reasonable effort will be made by the sponsors to make this a safe, enjoyable and memorable event.

General Information: Rest rooms are at the Rose Lake Trailhead. We recommend that you carry water, bring a walking stick and use insect repellent. Littering and picking vegetation along the route is forbidden. Local law requires that all pets are leashed and must be cleaned-up after. Strollers and Wheelchairs should not attempt this event.

Directions: Find PA-487 and follow to State Park Entrance. Turn into park and at intersection, turn right to follow signs to Rose Lake Trailhead. The trail starts next



ADDITIONAL INFORMATION:

David Barber 717-626-6103
Or email dmtmbarber@comcast.net
Or, write to
Penn Dutch Pacers Volksmarch Club, Inc.
PO Box 7445, Lancaster, PA 17604-7445
www.avaclubs.org/pdp/index.html



Penn Dutch Pacers are offering 10 walks and 2 bikes (at 8 locations) for the 2017 year as follows:

Ephrata – 1 walk- Explore the downtown and nearby residential areas of Ephrata and a stretch of a rail trail past the Dick Winters memorial (WWII soldier from Ephrata). Start Point is the Hampton Inn and Suites, at the intersection of Main street and Spring Garden St, Ephrata, PA 17522

Lancaster -2 walks – start Point is Weis Market in Bridgeport 1603 Lincoln Highway East, Lancaster PA 17602. Walk either the Thaddeus Stevens walk in Lancaster City, or the Lancaster County Park Walk.

Lititz – 1 walk – walk past the historical downtown of Lititz and General Sutters Gravesite and pass an overlook looking at the valley south of town. Start point is the Lititz Rec Center – 301 W. Maple Street, Lititz PA 17543

Mount Joy – 2 walks and 1 bike. Explore either the covered bridge walk or the six parks and a cemetery walk or bike over covered bridges and along a Heritage Route C bike trail. Start point is Old Square Inn, 127 E Main St (PA-230) Mount Joy, PA 17552

Strasburg – 1 walk – walk through the historic town, stop at the Strasburg Creamery, and explore the Strasburg Railroad complex. – Start point is the Holiday Inn Express and Suites, 1900 Historic Drive (rte 896) Strasburg, PA 17579

Three of the walks are seasonal

April 1 – Dec 31 - **Bird in Hand** – 1 walk and 1 bike- Walk or bike through Pennsylvania Dutch country around Bird in Hand and stop in at Lapp Valley Farm for Ice Cream (Monday – Saturday). Start point is the Plain and Fancy Restaurant and stores, 3121 Old Philadelphia Pike(PA-340), Bird in Hand, PA 17505. Box is located just inside the main doors.

April 1- Nov 15 - **Ricketts Glen State Park**, Benton, PA – 1 walk – uses the Online Start Box provided by the California Volkssport Association (www.cva4u.org). Walk past 17 waterfalls and in three counties. Many steep rock steps on this trail- need hiking boots and trekking poles are recommended.

April 1- Oct 31 - **Susquehannock State Park**, Drumore Township – 1 walk – take two 5 K routes on the trails through the Park looking out over the Susquehanna River at one overlook. Start point is an information kiosk inside the park. 1880 Park Road, Drumore, PA, 17518