

**Freestate Happy Wanderers Savage, Maryland 5K & 10K Year-Round Event
(Y0575), an AVA Sanctioned Year-Round Event**

Table of Contents:

Use the following table to guide what portion of this document you may wish to print out.

Section Contents	Pages
Table of Contents, Trail Descriptions, Special Programs, FHW Website, Start Point, Amenities,	1
Driving Directions, Walk Registration, Walk Completion, Emergency Contacts	2
Savage 10KM Walk Directions and Map	3 - 5
Savage 5KM Walk Directions and Map	6, 7
Savage Mill Map	8

Well-preserved 19th Century Mill complex with the historic Bollman bridge and pleasant river walk.

Trail Description:

This event consists of a 10KM route and a 5KM route starting from the paymaster's office of Historic Savage Mill. Both routes cross the historic Bollman Bridge, one of the only remaining iron truss bridges. Trails are a combination of residential and wooded areas. The residential part of the trail is on sidewalks, paved streets with a few stairs. Warning: there is poison ivy along some sections of the trail. Due to the stairs these routes are not suitable for wheelchairs or strollers.

1. Savage 10KM route: The trail crosses the Bollman bridge and goes along the Patuxent River. It then follows the streets of Savage, before entering a paved path through the woods. Walk is also part of the "Historic Civil War Tour" of Howard County, and there is a plaque by the bridge. The Savage Cemetery is also on the 10K trail. There is one hill on this part, so the trail is rated 2B.
2. Savage 5KM route: The woods part of the 5K trail is along the Patuxent River on a natural surface path. There is a National Historic Site - the Bollman Truss Bridge on the walk. The trail finishes through Savage Mill. This route is rated 2B.

Special Programs:

Washington-Rochambeau National Historic Trail on both routes.
Par-For-the-Course on the 10K route.

Freestate Happy Wanderers Website: <https://sites.google.com/svsvc.org/fsw/home>

Start Point:

Savage Mill, 8600 Foundry Street, Savage, MD 20763. Mill Information <http://www.savagemill.com>. Mill hours Daily 10am-6pm (Sun 11am-6pm). Mill closed Easter, Thanksgiving and Christmas. Walk hours are sunrise to sunset. Walk only during daylight hours. Pets are allowed on this event. (GPS: Lat: 39.13598, Long: -76.82687)

Amenities:

Restrooms are available in Savage Mill. Food is also available in Savage Mill.

Driving Directions:

8600 Foundry Street, Savage, MD 20763.

From I-95, exit 38 A, Rt 32 E, approximately 1 mile to US Rt 1 S Exit. Turn RIGHT at end of exit, follow Rt 1 to Gorman Road. Turn RIGHT, proceed to Foundry Street. Turn RIGHT, pass truss bridge, LEFT to Washington, LEFT to 1st parking lot facing Savage Mill. Look for Paymasters Office.

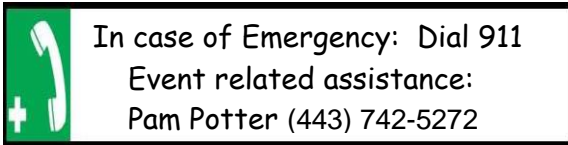
Walk Registration:

Registration takes place online using that AVA Online Start Box, on my.ava.org. Follow the instructions provided to create a user account and sign the AVA waiver (one time). Instructions for payment are also included. Download the directions and print as needed. The POC does not provide event directions or accept alternate payment methods.

Note: This event also has a physical start box. Please use either the Online Start Box (OSB) or Physical Start Box (PSB) to register and complete this event. Do not mix and match. For example, if you register using the OSB do not complete your event by using the PSB (nor sign the PSB log sheet). The sponsoring club only receives credit for an OSB participation when an OSB registration has been completed online by entering your participation date, distance and any special program using the OSB. See below.

Walk Completion and Walk Credit:

Once you have physically completed the walk, please log in to your Online Start Box account, click on the “My Start Box” tab, then the “Finish Table” tab, and click on “Go to Finish Table” button for the event you have completed. Use the displayed entry form to submit the date and distance of your walk as well as select applicable AVA Special Programs to generate stamped “virtual” insert cards that you may choose to print out.

Emergency Numbers:

These walk directions and maps may only be used in conjunction with a signed American Volkssport Association athletic waiver. All other uses are prohibited.



10 Km Savage Woods/Residential YRE Trail

Start/Finish: The Paymaster's Office - Savage Mill

1. Leave the Paymaster's Office. **TURN RIGHT**, keeping the building on your right to the steps to the Bollman Truss Bridge (this is the only cast iron and steel bridge in the world).
2. **Cross** the bridge and **TURN RIGHT** onto the trail along the river.
3. With the Little Patuxent River on the right, continue along the trail to the wooden bench at the turn-around point.
4. Retrace your steps back to the bridge (look for the old dam and ruins along the river). Re-cross the bridge.
5. Proceed through the lower parking lot and the Mill's loading dock and walk up the steps, passing Cotton Shed (Antique Center 1) on the right.
6. **BEAR RIGHT DIAGONALLY** across the roadway to the short set of steps, walk up the brick walkway to Washington Street (upper entrance to Savage Mill Parking lot).
7. **Cross** Washington Street, **TURN RIGHT**. Proceed down Foundry Street onto Baltimore Street.
8. **CROSS** Foundry Street to Baltimore Street on the right side. (The Savage United Methodist church is on your left side of Baltimore Street, left of Foundry Street.)
9. Proceed up Baltimore Street beside Carroll Baldwin Hall (an old Richardsonian Building that once housed the Savage branch of the Howard County Library) to William Street, first **RIGHT turn**.
10. Walk down Williams Street to Washington Street. **TURN LEFT** and proceed on the left side to Baldwin Street.
11. **TURN LEFT** and walk to Baltimore Street. **TURN LEFT** and walk down Baltimore Street to Cemetery Lane.
12. **TURN RIGHT**, cross Baltimore Street with caution, and proceed up Cemetery Lane to Carrollton Avenue (Savage Cemetery on the right.)
13. **TURN LEFT**, walk down Carrollton Avenue to Woodward Street. **TURN RIGHT** and proceed to Lincoln Street.
14. **TURN LEFT**, cross Woodward Street and continue on Lincoln Street to Savage-Guilford Road (Savage Volunteer Fire Department on the left).
15. **TURN RIGHT** on Savage-Guilford Road and proceed to Jefferson Street.
16. **Cross** Savage-Guilford Road and proceed on Jefferson Street.

In case of emergency dial 911.

For event related assistance please call Pam Potter 443-742-5272

Walk directions may only be used in conjunction with a signed AVA waiver. Other uses prohibited.

Copyright © 5/3/24 Freestate Happy Wanderers AVA-190

17. Continue on Jefferson Street to the “Yield “ sign. **TURN RIGHT** and follow Windemere Way back to Jefferson Street.
18. **TURN LEFT** and proceed on Jefferson Street to Savage-Guilford Road. Cross with caution and **TURN LEFT**.
19. Walk up Savage-Guilford Road to the crosswalk at Bollman Elementary School. Cross to the sidewalk.
20. Follow the sidewalk around in front of the schools back to Savage-Guilford Road. **TURN LEFT**.
21. Proceed up Savage-Guilford Road to Vollmerhausen Road, passing Patuxent Valley Middle School to orange fire plug.
22. **TURN LEFT** onto the paved trail and proceed to the wooden bridge,
23. Cross the bridge and continue to the “T” intersection (Howard County Recreation & Parks sign). **TURN LEFT** onto the paved path and proceed up to the Savage Park Athletic Fields parking lot.
24. **TURN RIGHT** and follow the road, passing the red brick building, and **TURN RIGHT**.
25. Walk to the end of the second parking lot, **TURN RIGHT**. Before reaching the stop sign notice the large stone with a plaque on your right in front of the Tot Lot.
26. Continue to the stop sign. **BEAR LEFT**, and exit the park, passing the entrance gates on Fair Street.
27. Cross Baltimore Street to Washington Street (notice the Savage Manor to your right.)
28. **TURN RIGHT** proceed around the parking lot to Terrapin Adventures. **TURN LEFT** and walk along the fence line (Zip Line Course) to the sidewalk.
29. Walk down the sidewalk to the brick walkway passing the High Rope Station.
30. **TURN RIGHT** onto the sidewalk. Go past the Towel Station onto the patio.
31. Retrace your steps to the High Rope Station. **TURN RIGHT** on the brick walkway.
32. Proceed down the walkway to the doors and enter the Savage Mill.
33. Walk down the steps, continue through the mill to exit at the double door to your **LEFT**.
34. **TURN RIGHT** and return to the start/finish (Paymaster’s Office).

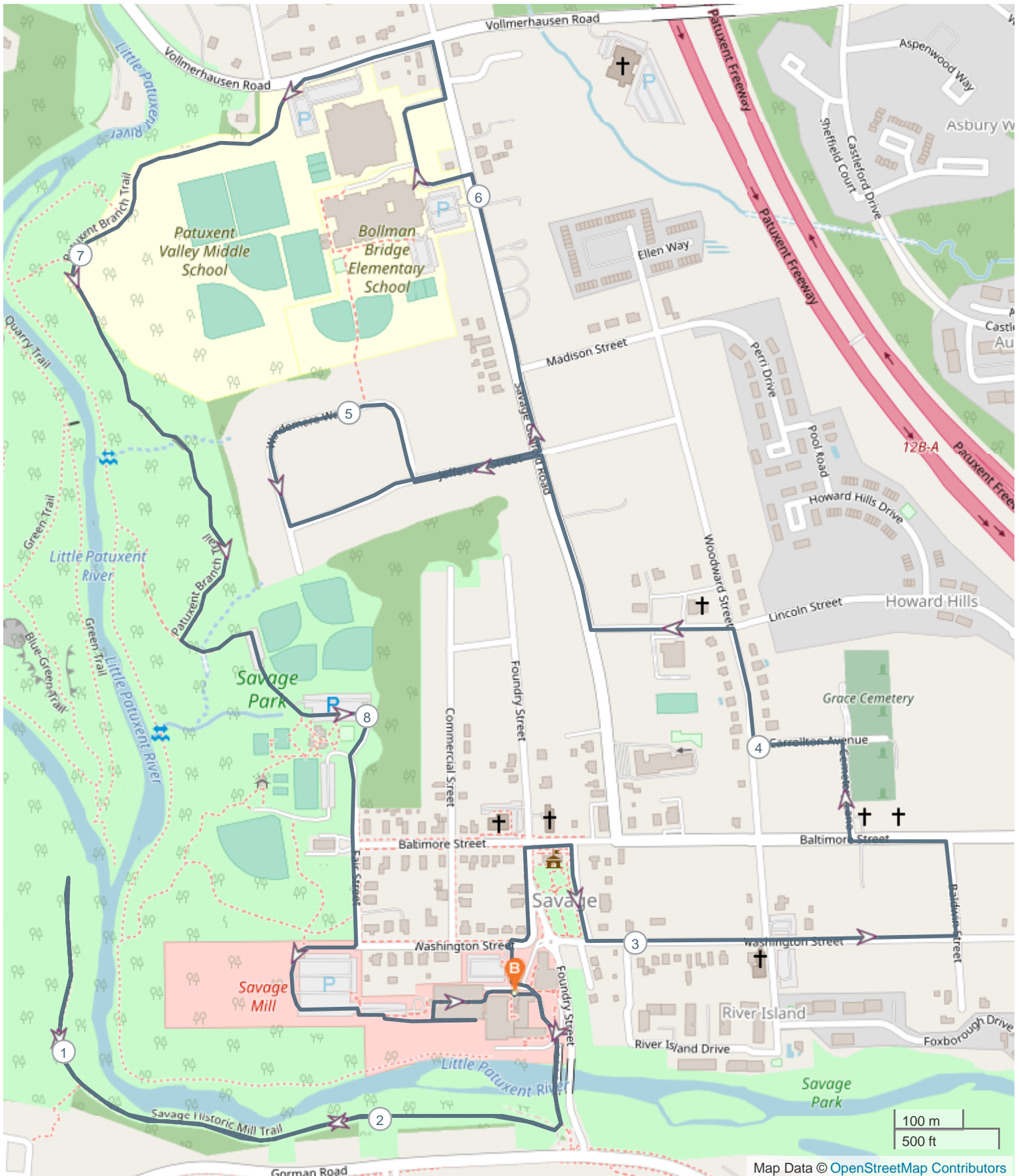
In case of emergency dial 911.

For event related assistance please call Pam Potter 443-742-5272

Walk directions may only be used in conjunction with a signed AVA waiver. Other uses prohibited.

Copyright © 5/3/24 Freestate Happy Wanderers AVA-190

Savage Mill 10Km Volksmarch Route



5 Km Savage Woods/Residential YRE Trail

Start/Finish: The Paymaster's Office – Savage

1. Leave the Paymaster's Office, **TURN RIGHT**, keeping the building on your right. Go to the steps nearest to the bridge. Go down the steps to the Bollman Truss Bridge (the only cast iron and steel bridge of this design in the world).
2. Cross the bridge and **TURN RIGHT** onto the trail along the river.
3. With the Little Patuxent River on the right, continue along the trail to the wooden bench at the turn around point.
4. Retrace your steps back to the bridge. (Look for the old dam and ruins along the river.) Re-cross the bridge.
5. Proceed through the lower parking lot to the Mill's loading dock. Walk up the steps, passing the Cotton Shed (Antique Center 1) on the right.
6. **BEAR RIGHT** diagonally across the roadway to and up the short set of steps, take the brick walkway to Washington Street (upper entrance to Savage Mill parking lot).
7. **TURN LEFT** and walk up Washington Street. Enter the parking lot for Savage Mill and proceed around the parking lot to Terrapin Adventures.
8. **TURN LEFT**. Walk along the fence line (zip line course) to the sidewalk.
9. Walk down the sidewalk to the brick walkway, passing the High Rope Station.
10. Proceed to the doors to enter Savage Mill.
11. Walk down the steps. Continue through the Mill, passing numerous shops. Exit at the double doors on the left.
12. **TURN RIGHT** and return to the Paymaster's Office (Start/Finish).

Thank you for walking with the
Freestate Happy Wanderers!

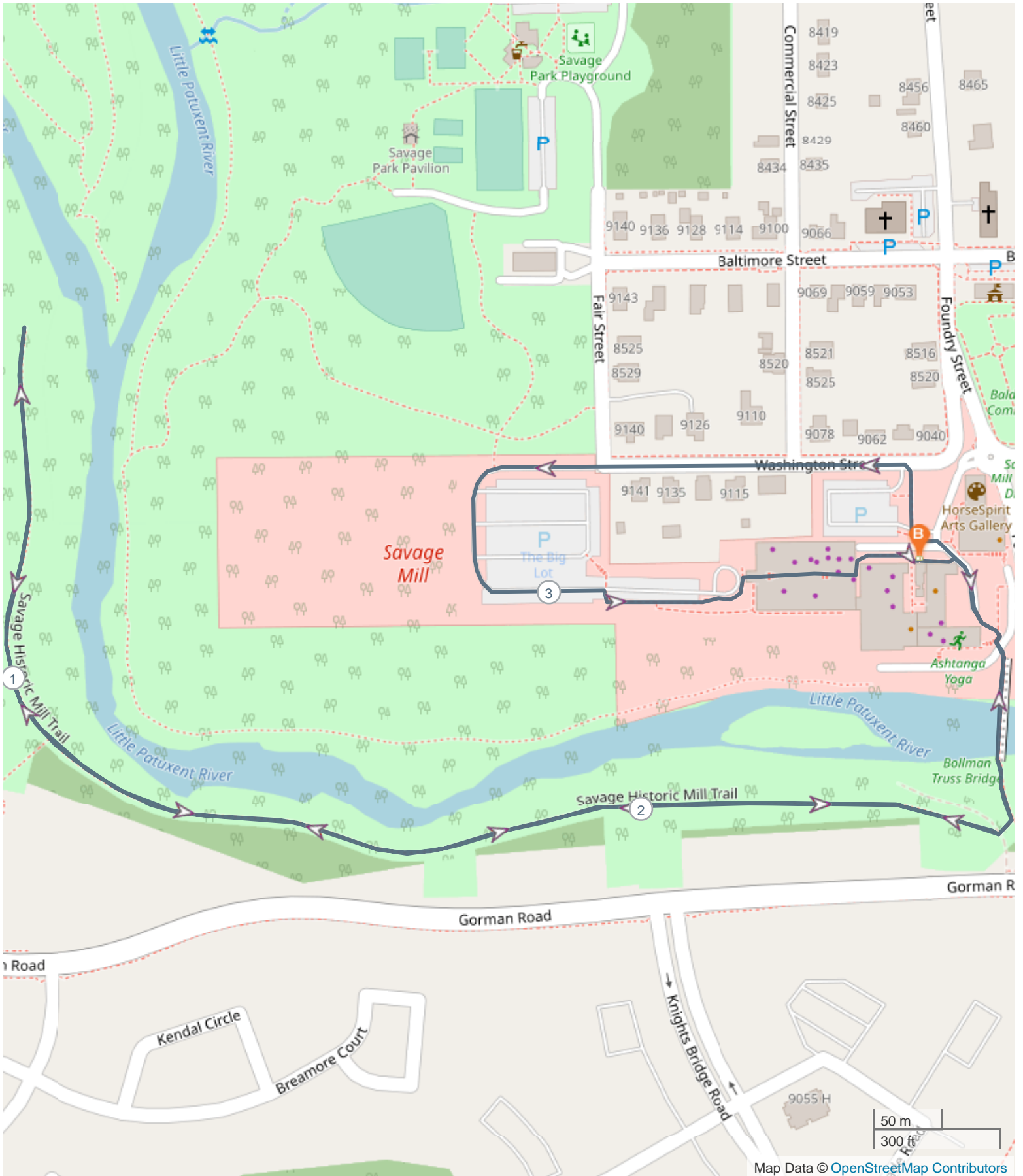
In case of emergency dial 911.

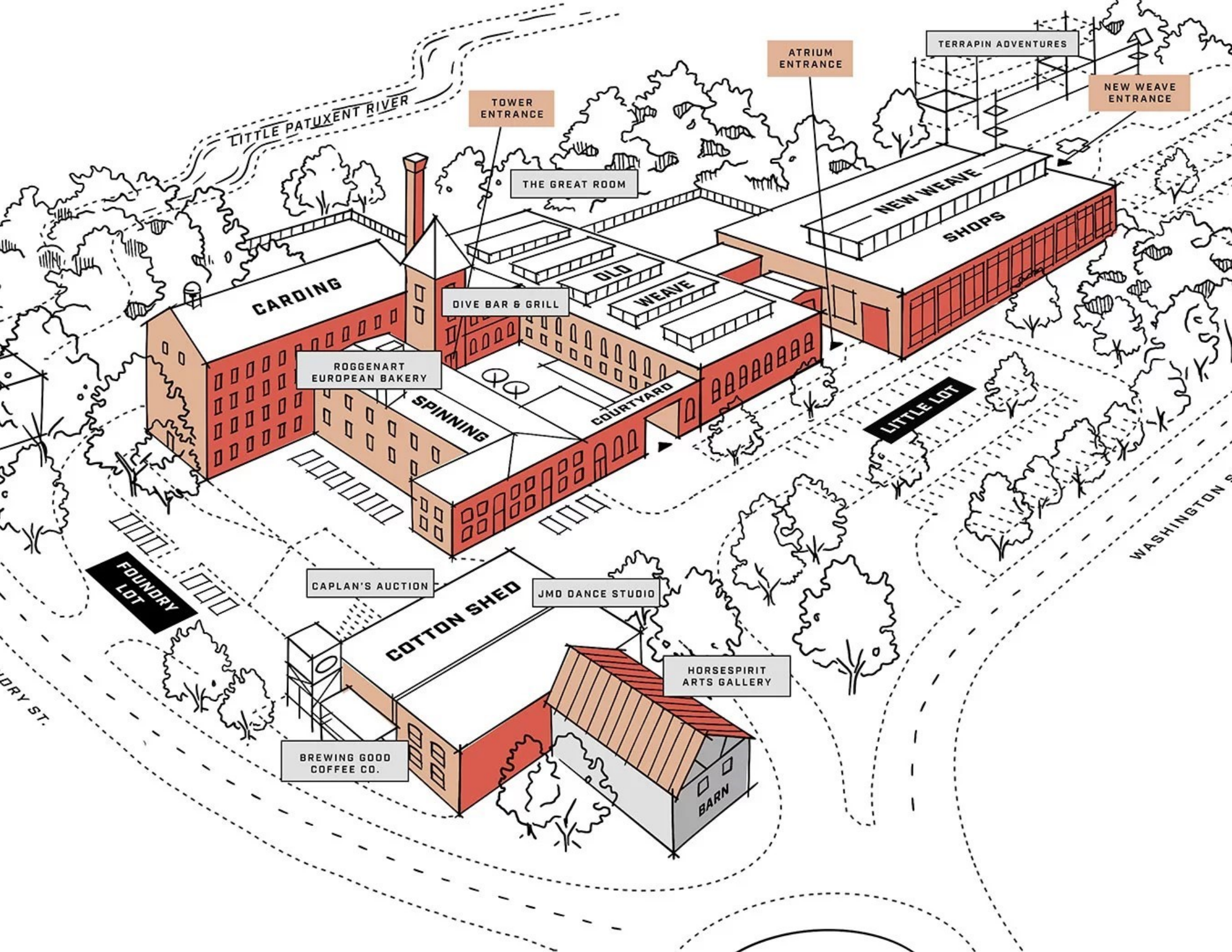
For event related assistance please call Pam Potter 443-742-5272

Walk directions may only be used in conjunction with a signed AVA waiver. Other uses prohibited.

Copyright © 5/1/24 Freestate Happy Wanderers AVA-190

Savage Mill 5Km Volksmarch Route





LITTLE PATUXENT RIVER

TOWER ENTRANCE

ATRIUM ENTRANCE

TERRAPIN ADVENTURES

NEW WEAVE ENTRANCE

THE GREAT ROOM

CARDING

NEW WEAVE SHOPS

DIVE BAR & GRILL

OLD WEAVE

ROGGENART EUROPEAN BAKERY

SPINNING

COURTYARD

LITTLE LOT

WASHINGTON ST.

FOUNDRY LOT

CAPLAN'S AUCTION

JMO DANCE STUDIO

HORSEPIRIT ARTS GALLERY

COTTON SHED

BREWING GOOD COFFEE CO.

BARN

FOUNDRY ST.