

## CLIFTON PARK, NY 5K, 6K & 10K WALKS

There are three walks available; a 5K, a 6K and a 10K all rated **1A**.

**Starting Point:** Clifton Park Halfmoon Public Library      Phone: 518-371-8622  
475 Moe Rd.  
Clifton Park, New York 12065  
Website: <http://www.cphlibrary.org/>

The Start Point is Clifton Park Halfmoon Public Library. The library is open M-T 9AM-9PM, Friday 9AM-6PM, Saturday 9AM-5PM, and Sunday 12PM-5PM. CLOSED MAJOR HOLIDAYS. Restrooms are available at the Start Point when the library is open.

**DIRECTIONS TO STARTPOINT:** Clifton Park is located in eastern New York State, approximately 14 miles northwest of Albany.

**From the North:** I-87(Adirondack Northway) South to Exit 9W, Clifton Park, NY-146 West. Merge onto NY-146 West. After approximately 1 mile turn left onto Moe Road. Library entrance will be approximately 0.5 miles on your left. **PLEASE park in the back of the parking lot near the woods.**

**From the South:** NYS Thruway (I-87) North to Exit 24. At the end of the Exit 24 ramp, take the ramp to I-87 North Exit 1N towards Montreal. Continue on I-87 North to Exit 8A for Grooms Rd. Turn left onto Grooms Rd. After approximately 1.2 miles turn right onto Moe Rd. Library entrance will be approximately 1.2 miles on your right. **PLEASE park in the back of the parking lot near the woods.**

**From the East:** I-90 West into New York State. As you approach Albany take Exit 6A to merge onto I-787 N towards Troy. Take Exit 9W to merge onto NY-7 W towards I-87 N Schenectady/Saratoga Springs. Take the exit onto I-87 N towards Saratoga Springs/Glens Falls. Take Exit 8A for Grooms Rd. Turn left onto Grooms Rd. After approximately 1.2 miles turn right onto Moe Rd. Library entrance will be approximately 1.2 miles on your right. **PLEASE park in the back of the parking lot near the woods.**


**From the West:** I-90 East into New York State. As you approach Schenectady take Exit 26, Schenectady/Scotia, to merge onto I-890 East. On I-890 E take Exit 3 towards GE Truck Terminal. Stay on the exit ramp as it widens to four lanes. Take the third lane from the left to merge onto Erie Blvd. Continue on Erie Blvd. and at the traffic circle continue straight (2<sup>nd</sup> exit) to stay on Erie Blvd. In approximately 0.6 miles turn right at the traffic light onto Maxon Rd. Extension. At the next traffic light merge left onto Van Vranken Ave. At the traffic circle take the 3<sup>rd</sup> exit onto Rt. 146 East and over the bridge. Just before the 2<sup>nd</sup> traffic light bear right to stay on Rt. 146 E. After approximately 3.5 miles take the 2<sup>nd</sup> exit at the traffic circle to continue straight on Rt. 146. After approximately 1.4 miles turn right at the traffic light onto Moe Rd. Library entrance will be approximately 0.5 miles on your left. **PLEASE park in the back of the parking lot near the woods.**

**Course Description:** Clifton Park is located in Southern Saratoga County. The trail is totally flat and is rated **1A** for all three walks. Depending on the walk selected there is a short excursion through a paved wooded trail, traversing the Shenendehowa School Campus, walking through neighborhoods, the Clifton Country Mall, and surrounding areas.

The following map & directions may only be used in conjunction with a signed American Volkssport Association athletic waiver. All other uses are prohibited.

For immediate emergency assistance call **911**.  
POC: Eileen Skinner, 518-221-1696

## CLIFTON PARK, NY - Library to School 6K WALK

- 1. Starting** at the rear of the library parking lot, walk to the sidewalk next to the library.
- 2. LEFT** on sidewalk past the library entrance to Moe Rd.
- 3. LEFT** on Moe Rd. to the traffic light at Clifton Park Center Rd.
- 4. Cross** Clifton Park Center Rd and **continue straight** on Moe Rd. Look for the first right – Par Del Rio.
- 5. RIGHT** to cross Moe Rd onto Par Del Rio.
- 6. Continue** on Par Del Rio to Madrid Ct.
- 7. RIGHT** on Madrid Ct to Locust Lane
- 8. LEFT** on Locust Lane. Cross Hemlock Dr and continue to Beechwood.
- 9. RIGHT** on Beechwood Drive to Clifton Park Center Rd.
- 10. RIGHT** on Clifton Park Center Rd to the pedestrian crosswalk.
- 11. LEFT** on the crosswalk to cross Clifton Park Center Rd. Continue onto the sidewalk of the Shenendehowa School Campus.  
*NOTE: As you pass the first 2 joined Elementary Schools (on your left), to your right are some playing fields with a big sign listing all the Soccer Championships Won.*
- 12. CONTINUE** around the campus - **refer to the campus map insert**. The schools on this campus make up most of the schools in the Shenendehowa School District.  
*There are a total of 4 Elementary schools, 3 Middle schools and 2 High Schools on this campus. On the left are the four elementary schools: Tesago/Skano/Orenda/Karigon. The three Middle Schools: Koda/Arcadia & Gowana (original K-12 Bldg) and High School West & High School East will be on the right when following the route through the campus.*
- 13. LEFT** facing Gowana Middle School walk through the parking lot towards the transportation center.
- 14. RIGHT** at the end of the parking lot. The Aquatic Center sign will be on you right. Continue on the sidewalk until you are facing High School West. When the sidewalk curves right, continue straight, then left through the High School West Parking Lot to the sidewalk to the end of the building. Look for a red fire hydrant.
- 15. RIGHT** at the fire hydrant and follow the sidewalk along the side of High School West to crosswalk for a short distance.
- 16. LEFT** passing the Football Field and the tennis courts. (*Par for the Course*)
- 17. RIGHT** at the end of the Tennis Courts and walk to High School East parking lot.
- 18. LEFT** across the parking lot & road to the Carillon Bell Tower.  


*The Carillon Bells (between driveways 1 & 2)*  
*Before 1950, the district was made up of 22 one- and two-room schoolhouses, 11 of which still had school bells. Rodney Winans, the first superintendent, helped to centralize the district. He brought the 11 bells together to the bell court on the main campus (now Gowana) and had them assembled into a structure they named "the Carillon". The bells are a symbol that pays tribute to the schools and the towns that combined to form Shenendehowa Central Schools. In August 2009, after being cleaned and refurbished, the bells were assembled into a bell tower in front of High School East. While the bells are no longer able to ring, they will serve as a symbol for generations to come. For more on the history of the Shenendehowa School District go to: <http://www.shenet.org/about-us/historical-information-2/>*
- 19. CONTINUE** from the Carillon Bell Tower across next parking lot to far end of High School East building.
- 20. RIGHT** at end of building. Follow this sidewalk to the 1<sup>st</sup> left at a pedestrian crossing sign.
- 21. LEFT** crossing roadway.

## CLIFTON PARK, NY - Library to School 6K WALK

22. **CONTINUE** on the sidewalk to exit the school grounds at Moe Rd.
23. **LEFT** for a very short distance to the Pedestrian Cross Walk.
24. **RIGHT** to cross Moe Rd.
25. **RIGHT** on Moe Rd to the library entrance
26. **LEFT** on sidewalk to front entrance of the library. Live concerts are held in this library throughout the year. (Step to the Beat)

*To the right of the entrance there is an obelisk. This Obelisk is a sculpture called "**Beginnings**" by **Bruno LaVerdiere**. The pattern on the sculpture is a series of first lines from famous works. How many can you identify?*

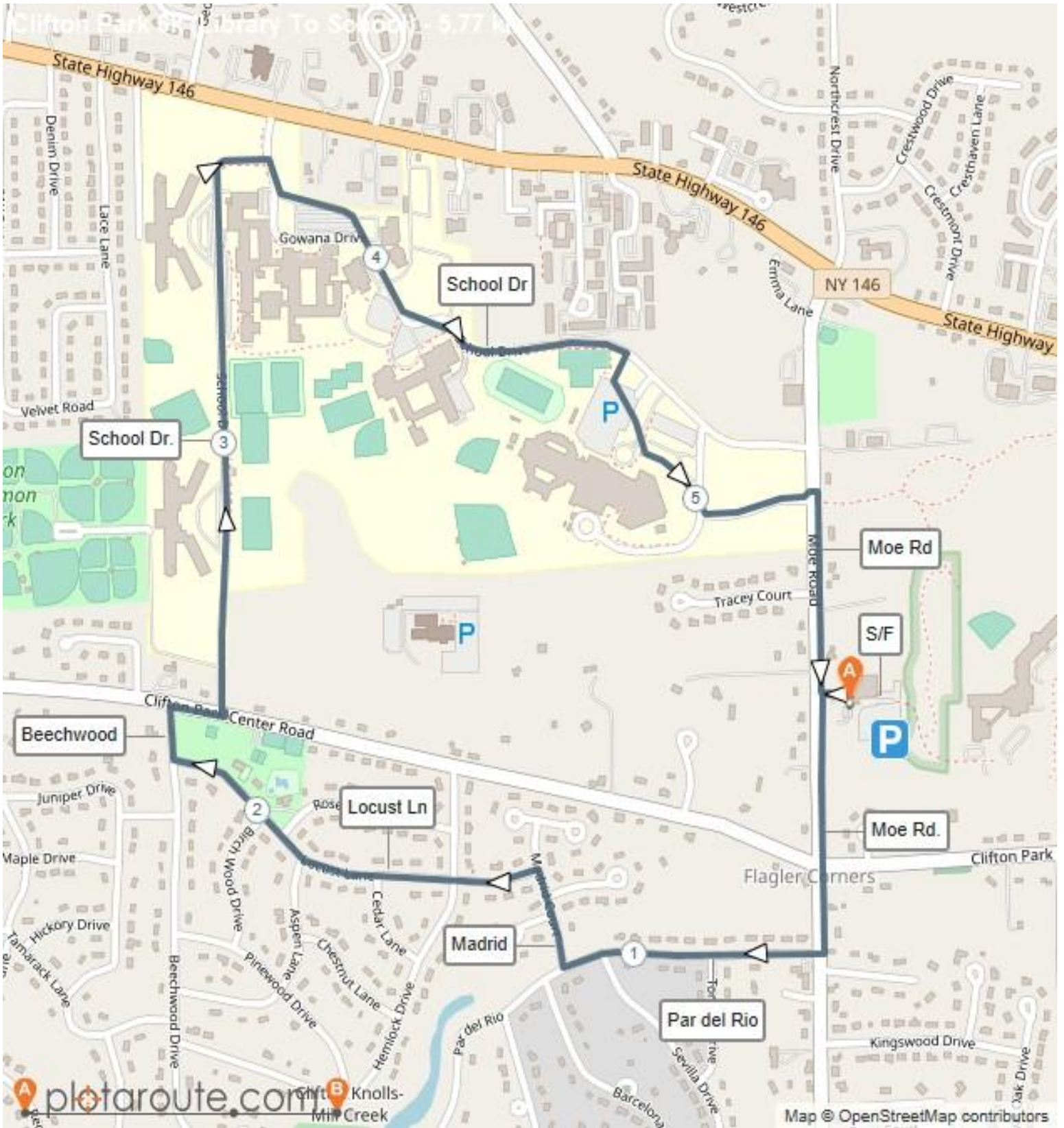
***Note:** There is a brick in memory of ESCVer David Skinner (past president and longtime member) to the left of this obelisk.*

27. **Return** to the rear of the library parking lot and the Start Point.

SPECIAL PROGRAMS		
Step to the Beat	Anniversary Hurrah!	Par for the Course

**AFTER YOUR EVENT:** Be sure to log back into the OSB system to 'finish/complete' your online registration after doing the event. The OSB system does not deduct any event fee from a participant's Event Bank until they have submitted event completion info including the date of the event, the distance, and the selection of applicable Special Programs that person is participating in. (Nevertheless, a fee of \$2 for a downloaded PDF is deducted from the user's Event Bank when the PDF is downloaded. Later, any PDF fees are credited back to a user's Event Bank when he/she submits the event completion info as a paying-for-credit participant. Note, however, the \$2 coupon for the downloaded PDF will expire in 60 days.) Also note that an event registration expires after 30 days, but if your registrations lapses, you may re-register without cost.

# CLIFTON PARK, NY - Library to School 6K WALK





## CLIFTON PARK, NY - Library to Mall 5K Walk

1. **Starting** at the rear of the library parking lot, walk to the sidewalk next to the library.
2. **LEFT** on sidewalk past the library entrance to Moe Rd.
3. **RIGHT** on Moe Rd. to entrance of **(new)** Clifton Park Town Center Park. (maybe no park sign)(across from school entrance.)
4. **RIGHT** into Clifton Park Town Center Park.
5. **CONTINUE** straight thru parking lot to the sidewalk, then thru the park staying on the sidewalk until you come to Maxwell Dr.
6. **CONTINUE** straight (crossing Maxwell) to Southside Dr. passing Druther's to front of strip mall (Old Brick)
7. **RIGHT** on sidewalk in front of strip mall.
8. **CONTINUE** straight along store fronts, pass 2 stop signs.
9. **LEFT** into parking lot and continue to the traffic light at Clifton Country Rd. (no sign)
10. **CROSS** at the crosswalk towards Chipotle.
11. **CONTINUE** straight to the mall corner. (Buffalo Wings)
12. **RIGHT** along front of mall until the sidewalk ends. Cross to the Mall Main Entrance.
13. **LEFT** and walk to end of sidewalk (Alpin Haus).
14. **RIGHT** and continue to walk around the outside of the mall using sidewalks past Boscov's to the movie theater entrance.
15. **LEFT** at crosswalk to sidewalk next to parking lot.
16. **BEAR RIGHT** along sidewalk to Clifton Country Rd.
17. **LEFT** on sidewalk along left side of Clifton Country Rd. Continue to the crosswalk across from Wall St.
18. **RIGHT, CAREFULLY** cross Clifton Country Rd. and continue on sidewalk past entrance road to Hannaford Supermarket.
19. **CONTINUE** past the Bentley Apartment Complex on right, and the YMCA on left. Continue through the parking lot and to a gate entering the school property. (Par for the Course)
20. **LEFT** onto the sidewalk alongside Maxwell Dr (no sign). When the sidewalk ends bear left to Clifton Park Center Rd. (no sign)
21. **RIGHT** on Clifton Park Center Rd to Moe Rd.
22. **RIGHT** on Moe Rd and continue to the library driveway entrance. Cross the driveway.
23. **RIGHT** on the sidewalk and walk to the entrance of the library. Live concerts are held in this library throughout the year. (Step to the Beat)  
*To the right of the entrance there is an obelisk. This Obelisk is a sculpture **called "Beginnings" by Bruno LaVerdiere.** The pattern on the sculpture is a series of first lines from famous works. How many can you identify?*  
*Note: There is a brick in memory of ESCVer David Skinner (past president and longtime member) to the left of this obelisk.*
24. **Return** to the rear of the library parking lot and the Start Point.

## CLIFTON PARK, NY - Library to Mall 5K Walk

SPECIAL PROGRAMS		
Step to the Beat	Anniversary Hurrah!	Par for the Course

**AFTER YOUR EVENT:** Be sure to log back into the OSB system to 'finish/complete' your online registration after doing the event. The OSB system does not deduct any event fee from a participant's Event Bank until they have submitted event completion info including the date of the event, the distance, and the selection of applicable Special Programs that person is participating in. (Nevertheless, a fee of \$2 for a downloaded PDF is deducted from the user's Event Bank when the PDF is downloaded. Later, any PDF fees are credited back to a user's Event Bank when he/she submits the event completion info as a paying-for-credit participant. Note, however, the \$2 coupon for the downloaded PDF will expire in 60 days.) Also note that an event registration expires after 30 days, but if your registrations lapses, you may re-register without cost.



## CLIFTON PARK, NY - 10K Walk

1. **Starting** at the rear of the library parking lot, walk to the sidewalk next to the library.
2. **LEFT** on sidewalk past the library entrance to Moe Rd.
3. **RIGHT** on Moe Rd. to entrance of **(new)** Clifton Park Town Center Park. (maybe no park sign)(across from school entrance.)
4. **RIGHT** into Clifton Park Town Center Park.
5. **CONTINUE** straight thru parking lot to the paved sidewalk, then thru the park staying on the sidewalk until you come to Maxwell Dr.
6. **CONTINUE** straight (crossing Maxwell) to Southside Dr. passing Druther's to front of strip mall. (Old Brick on the right)
7. **RIGHT** on the sidewalk in front of strip mall.
8. **CONTINUE** straight along store fronts, pass 2 stop signs.
9. **LEFT** into parking lot and continue to the traffic light at Clifton Country Rd. (no sign)
10. **CROSS** at the crosswalk towards Chipotle.
11. **CONTINUE** straight to the mall corner. (Buffalo Wings)
12. **RIGHT** along front of mall until the sidewalk ends. Cross to the Mall Main Entrance.
13. **LEFT** and walk to end of sidewalk (Alpin Haus).
14. **RIGHT** and continue to walk around the outside of the mall using sidewalks past Boscov's to the movie theater entrance.
15. **LEFT** at crosswalk to sidewalk next to parking lot.
16. **BEAR RIGHT** along sidewalk to Clifton Country Rd.
17. **LEFT** on sidewalk along left side of Clifton Country Rd. Continue to the crosswalk across from Wall St.
18. **RIGHT, CAREFULLY** cross Clifton Country Rd. and continue on sidewalk past entrance road to Hannaford Supermarket.
19. **CONTINUE** past the Bentley Apartment Complex on the right and the YMCA on left. Continue through the parking lot and through a gate entering the school property.
20. **LEFT** onto the sidewalk alongside Maxwell Dr (no sign). When the sidewalk ends bear left to Clifton Park Center Rd. (no sign)
21. **RIGHT** on Clifton Park Center Rd to Moe Rd.
22. **LEFT** on Moe Rd. Look for the first right – Par Del Rio.
23. **RIGHT** to cross Moe Rd onto Par Del Rio. Walk to Madrid Ct.
24. **RIGHT** on Madrid Ct to Locust Lane.
25. **LEFT** on Locust Lane. Cross Hemlock Dr and continue to Beechwood.
26. **RIGHT** on Beechwood Drive to Clifton Park Center Rd.
27. **RIGHT** on Clifton Park Rd to the pedestrian crosswalk.
28. **LEFT** on the crosswalk to cross Clifton Park Center Rd. Continue onto the sidewalk of the Shenendehowa School Campus.  
***NOTE:** As you pass the first 2 joined Elementary Schools (on your left), to your right are some playing fields with a big sign listing all the Soccer Championships Won.*
29. **CONTINUE** around the campus - **refer to the campus map insert.** The schools on this campus make up most of the schools in the Shenendehowa School District.  
*There are a total of 4 Elementary schools, 3 Middle schools and 2 High Schools on this campus. On the left are the four elementary schools: Tesago/Skano/Orenda/Karigon. The three Middle Schools: Koda/Arcadia & Gowana (original K-12 Bldg) and High School West & High School East will be on the right when following the route through the campus.*

## CLIFTON PARK, NY - 10K Walk

30. **LEFT** facing Gowana Middle School walk through the parking lot towards the transportation center.
31. **RIGHT** at the end of the parking lot. The Aquatic Center sign will be on you right. Continue on the sidewalk until you are facing High School West. When the sidewalk curves right, continue straight, then left through the High School West Parking Lot to the sidewalk to the end of the building. Look for a red fire hydrant.
32. **RIGHT** at the fire hydrant and follow the sidewalk along the side of High School West to crosswalk for a short distance.
33. **LEFT** past the Football Field and the tennis courts. (*Par for the Course*)
34. **RIGHT** at the end of the Tennis Courts and walk to High School East parking lot.
35. **LEFT** across the parking lot & road to the Carillon Bell Tower.
36. **CONTINUE** from the Carillon Bell Tower across next parking lot to far end of High School East building.
37. **RIGHT** at end of building. Follow this sidewalk to the 1<sup>st</sup> left to a Pedestrian Crossing Sign.
38. **LEFT** crossing roadway.
39. **CONTINUE** on the sidewalk to exit the school grounds at Moe Rd.
40. **LEFT** for a very short distance to the Pedestrian Cross Walk.
41. **RIGHT** to cross Moe Rd.
42. **RIGHT** and continue to Clifton Park/Halfmoon Library.
43. **LEFT** on the sidewalk and walk to the entrance of the library. Live concerts are held in this library throughout the year. (*Step to the Beat*)



*The Carillon Bells (between driveways 1 & 2)*

*Before 1950, the district was made up of 22 one- and two-room schoolhouses, 11 of which still had school bells. Rodney Winans, the first superintendent, helped to centralize the district. He brought the 11 bells*

*together to the bell court on the main campus (now Gowana) and had them assembled into a structure they named "the Carillon". The bells are a symbol that pays tribute to the schools and the towns that combined to form Shenendehowa Central Schools. In August 2009, after being cleaned and refurbished, the bells were assembled into a bell tower in front of High School East. While the bells are no longer able to ring, they will serve as a symbol for generations to come. For more on the history of the Shenendehowa School District go to: <http://www.shenet.org/about-us/historical-information-2/>*

*To the right of the entrance there is an obelisk. This Obelisk is a sculpture called "Beginnings" by Bruno LaVerdiere. The pattern on the sculpture is a series of first lines from famous works. How many can you identify?*

*Note: There is a brick in memory of ESCVer David Skinner (past president and longtime member) to the left of this obelisk.*

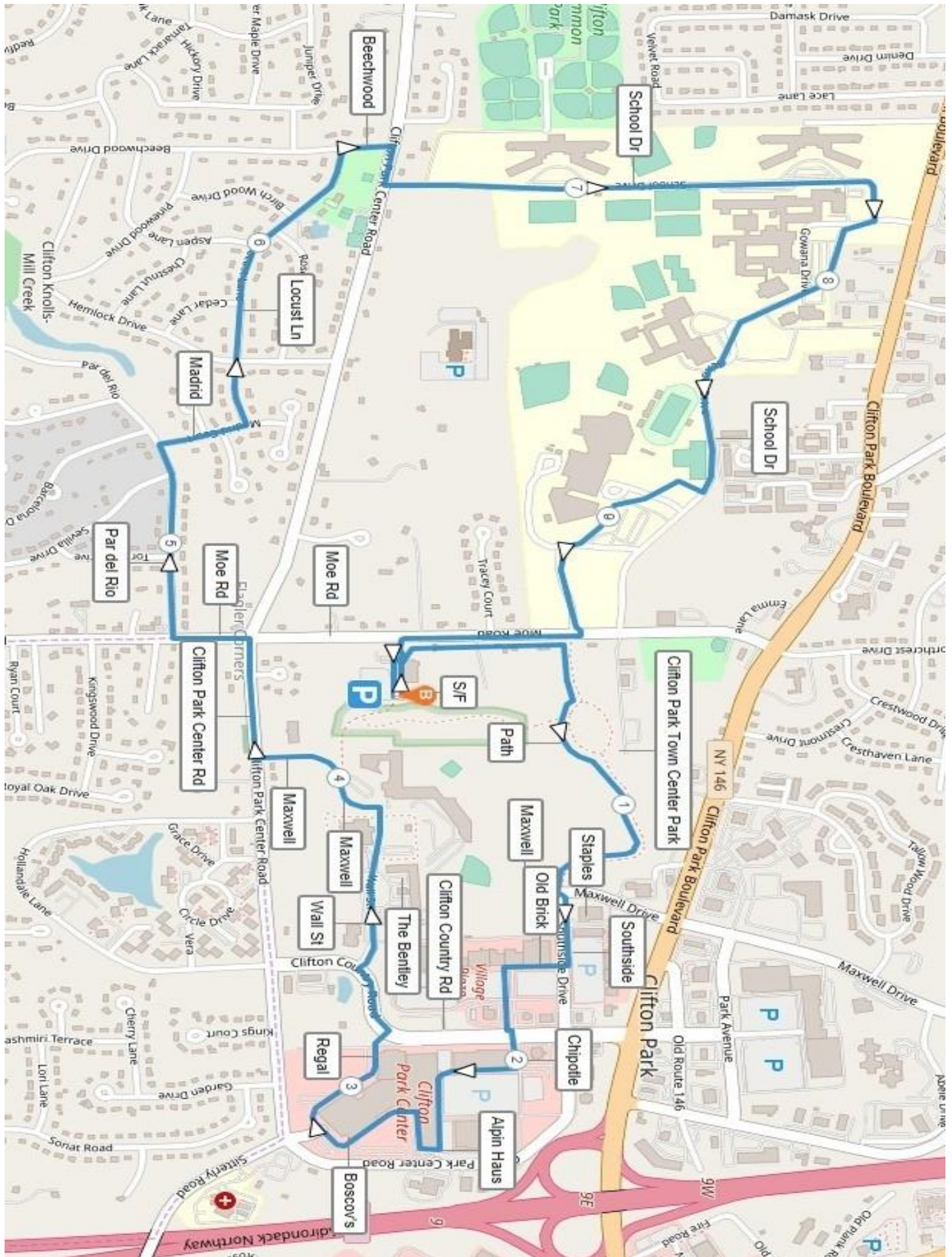
25. **Return** to the rear of the Library parking lot and the Start Point.

## CLIFTON PARK, NY - 10K Walk

SPECIAL PROGRAMS		
Step to the Beat	Anniversary Hurrah!	Par for the Course

**AFTER YOUR EVENT:** Be sure to log back into the OSB system to 'finish/complete' your online registration after doing the event. The OSB system does not deduct any event fee from a participant's Event Bank until they have submitted event completion info including the date of the event, the distance, and the selection of applicable Special Programs that person is participating in. (Nevertheless, a fee of \$2 for a downloaded PDF is deducted from the user's Event Bank when the PDF is downloaded. Later, any PDF fees are credited back to a user's Event Bank when he/she submits the event completion info as a paying-for-credit participant. Note, however, the \$2 coupon for the downloaded PDF will expire in 60 days.) Also note that an event registration expires after 30 days, but if your registrations lapses, you may re-register without cost.

# CLIFTON PARK, NY – 10K Walk Maps



CLIFTON PARK, NY – 10K Walk Maps



Map Data Copyright [OpenStreetMapContributors](https://www.openstreetmap.org/)