

**Instructions for
Happy Rock (Gladstone to Oregon City), Y0695
Gladstone, OR
Clackamas County Walk
5/10 Km, rated 1A**

Walk Start Location: Safeway Grocery Store Parking Lot, 95 82nd Dr, Gladstone OR 97027

GPS Coordinates: N 45.3811, W122.5823

Driving Directions: From Northbound 1-205: exit 11. Turn left at top of exit and look for the Safeway Grocery Store on the left-hand side about 5 blocks down. From Southbound 1-205: exit 11 Turn right at top of the exit and look for Safeway Grocery Store about four blocks down on the left-hand side. Park in the Rear of the Safeway Parking Lot (closest to 82nd Drive)

Park: Closest to the Safeway Grocery Store parking lot by 82nd Drive.

Restrooms: Safeway Grocery Store in the “very back of the store” and along the route.

Physical Start Box: Contact the POC by phone (503-659-6763) for information and to have the instructions/maps emailed to you, if you are not using the OSB.

Walk Completion and Credit: Be sure to log back into the OSB system to finish/complete your online registration after doing the event. The OSB system does not deduct any event fee from a participant's Event Bank until they have submitted event completion info including the event was walked, the distance walked, and the selection of applicable special programs that person is participating in. (Nevertheless, a fee of \$2 for a downloaded PDF is deducted from the user's Event Bank when the PDF is downloaded. Later, any PDF fees are credited back to a user's Event Bank when he/she submits the event completion info as a paying for credit participant. Note, however, the \$2 coupon for the downloaded PDF will expire in 60 days.)

"Please use either the Online Start Box (OSB) or Physical Start Box (PSB) to register and complete the event. Do NOT mix and match, for example, by registering using the OSB then completing your event using the PSB nor signing the PSB log sheet. The sponsoring club only receives credit for an OSB participation when an OSB registration has been completed online by entering your participation date, distances, and any special programs using the OSB. "

"These maps and directions may only be used in conjunction with a signed American Volkssport Association athletic waiver. All other uses are prohibited. "

Copyright 2024, Rose City Roamers Volkssport Club, Applies to all directions and maps.

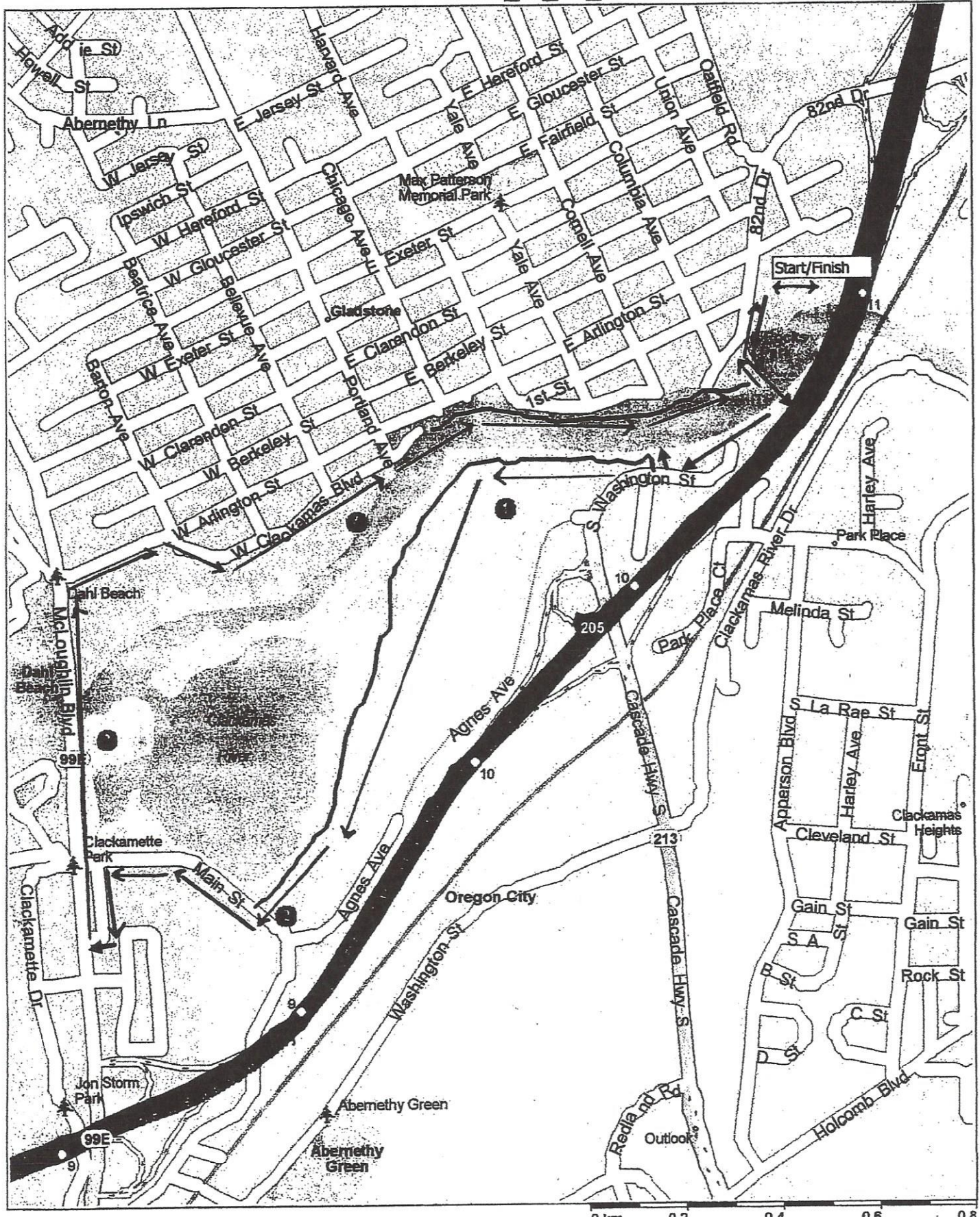
2024 HAPPY ROCK (GLADSTONE TO OREGON CITY) 5K
YRE # 695 RATED 1-A

1. **EXIT** parking lot to 82nd Drive.
 2. **LEFT** to 82nd Drive (Not Marked) to the end and **CROSS** the pedestrian bridge.
 3. Continue to mail box. (High Rocks Park on the Left at the bridge).
 4. Just past **MAIL BOX 15751 TURN RIGHT** on to the Bike Path Clackamas Trail at Main Street (past Storm Water Treatment Plant).
 5. **RIGHT** on Main Street (Not Marked) to first driveway into apartments. **CROSS** Main Street and then **RIGHT** on paved path along Main St,
 6. Just before the overpass. Take street (not marked) on your **LEFT** up the hill to McLoughlin Blvd /99E.
 7. **RIGHT** on McLoughlin Blvd /99E to W. Arlington Street.
 8. **RIGHT** on W. Arlington St to W. Clackamas Blvd.
 9. **RIGHT** on Clackamas Blvd to Portland Avenue.
 10. **CROSS** Portland Avenue and continue straight to paved trail into Chief Charles Ames Park.
 11. **FOLOW** the path to the end at 82nd Drive.
 12. **CROSS and LEFT** on 82nd Drive and return to the Finish at the Safeway Parking Lot.
- Safeway Grocery Store, 95 82nd Drive, Gladstone

Emergencies dial 911

Walk Contact: 503-659-6763

2018 Gladstone to O_C_5K_YRE 695



Copyright © and (P) 1998-2012 Microsoft Corporation and/or its suppliers. All rights reserved. <http://www.microsoft.com/streets/>
 Certain mapping and direction data © 2012 NAVTEQ. All rights reserved. The Data for areas of Canada includes information taken with permission from Canadian authorities, including: © Her Majesty the Queen in Right of Canada, © Queen's Printer for Ontario. NAVTEQ and NAVTEQ ON BOARD are trademarks of NAVTEQ. © 2012 Tele Atlas North America, Inc. All rights reserved. Tele Atlas and Tele Atlas North America are trademarks of Tele Atlas, Inc. © 2012 by Applied Geographic Solutions. All rights reserved. Portions © Copyright 2012 by Woodell Publications Corp. All rights reserved.

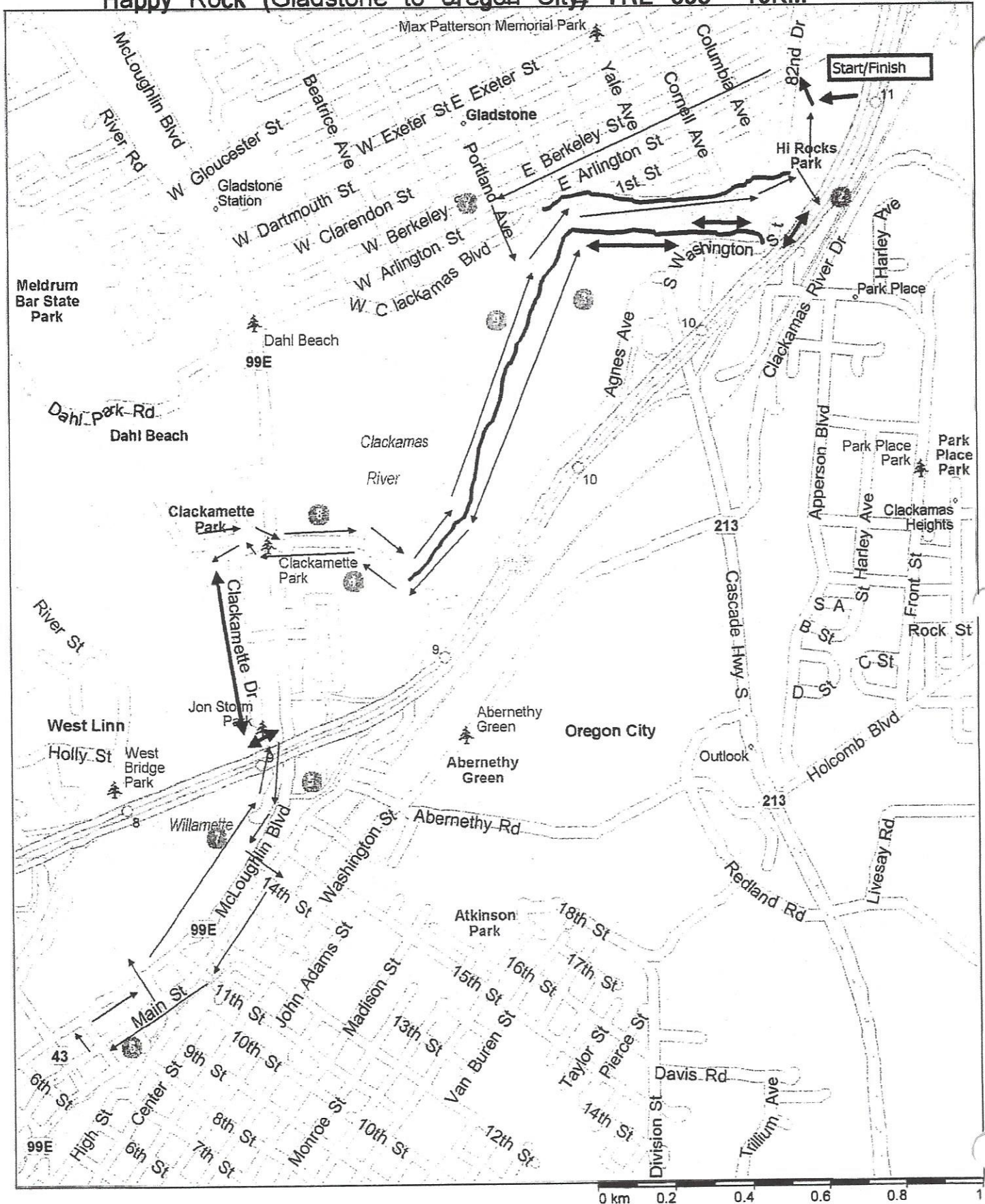
YRE Stamp# 695

Rated I-A

Challenges are: AVA: Rockin' Around the Clock (Courthouse OC) WOC: Historic Homes, Hotel, Justice, Murals, Nature, Overlook, Palm Trees, Parks, Playgrounds, Pedestrian Bridge, River, Statues, Salon/Spa, Skate Park, Trail & Trial ESVA: Rail to Trails

1. **EXIT** Parking lot to 82nd Drive.
2. **RIGHT** on 82nd Dr. (Not Marked) to Arlington St.
3. **LEFT** on Arlington St. to Portland Ave. (*1804 Arlington St. Historic Victorian Home*)
4. **LEFT** on Portland Ave. to END (1K)
5. At the END of Portland Ave. **LEFT** onto paved path (Trolley Trail). Charles Ames Park next to the Clackamas River.
6. Follow the Path past Restrooms stay on top of bluff Do Not take paths Down to River
7. At the END of the paved Path turn **RIGHT** to **CROSS** the Bridge & Continue to mail box. (*High Rocks Park on left at bridge*). (2K)
8. Just past MAIL BOX 15751 **RIGHT** on Bike Path Clackamas River Trail, keep left to the end of Trail/ Main St. (Past *Storm Water Treatment Plant*). (See Map for 3K)
9. **RIGHT** on Main St. (Not Marked) walk to Clackamette Park just past the underpass.
10. Just before the guard rail begins **RIGHT** between boulders on paved Path to the Left. Then Keep **LEFT** at brown posts to 2nd set of brown posts. (4K)
11. At second set of brown posts **RIGHT** on sidewalk next to Clackamette Dr. Passing Jon Storm Park on right to Crosswalk
12. **LEFT** at the Crosswalk to cross Clackamette Dr. then **RIGHT** on path (walking on left side of Clackamette Dr.) & stay Left to 14th St. (5K)
13. **LEFT** on 14th St. to Main St.
14. **RIGHT** on Main St. to 8th St.
15. **RIGHT** on 8th St. to McLoughlin Blvd. (6K)
16. **RIGHT** on McLoughlin Blvd. to 10th St.
17. **LEFT** on 10th St. too **CROSS** McLoughlin
18. **RIGHT** on McLoughlin Blvd with River on your left, to underpass and Crosswalk.
19. **LEFT** at the Crosswalk then **RIGHT** to Cross Clackamette Dr., (No Sign) (7K) Jon Storm Park & restrooms left continue on the sidewalk to the 2 brown posts. (River Shores Hotel on right).
20. At 2 brown posts (end of the sidewalk) take a slight **LEFT** between the 2 Brown Posts, and continue down the paved path to RV campground keeping the boat docks on your left.
21. At T (RV campground) **2 Brown Posts. RIGHT** on paved path to Park entrance.
22. At the T (road entrance to Clackamette Park) **RIGHT** then **LEFT** onto Clackamette Dr walk under the underpass and continue (St. name changes to Main St.) (8K)
23. Continue on Main St. to BIKE Path Clackamas River Trail sign on your left.
24. **LEFT** on Clackamas River Trail to Washington St. (See Map for 9K)
25. **LEFT** on Washington St to Bridge (Palm Tree)
26. **CROSS** the Pedestrian Bridge and continue on 82nd Drive to the Holiday Inn Express sign
27. **RIGHT** at the Holiday Inn Express sign to the Safeway parking lot and finish. Safeway Grocery Store, 95 82nd Drive, Gladstone

Happy Rock (Gladstone to Oregon City) YRE 695 10KM



Copyright © and (P) 1988–2012 Microsoft Corporation and/or its suppliers. All rights reserved. <http://www.microsoft.com/streets/>
 Certain mapping and direction data © 2012 NAVTEQ. All rights reserved. The Data for areas of Canada includes information taken with permission from Canadian authorities, including: © Her Majesty the Queen in Right of Canada. © Queen's Printer for Ontario. NAVTEQ and NAVTEQ ON BOARD are trademarks of NAVTEQ. © 2012 Tele Atlas North America, Inc. All rights reserved. Tele Atlas and Tele Atlas North America are trademarks of Tele Atlas, Inc. © 2012 by Applied Geographic Solutions. All rights reserved. Portions © Copyright 2012 by Woodall Publications Corp. All rights reserved.