



You must buy a Park Hopper Ticket to access this walk route. Purchase ticket(s) at the Park, www.Disneyland.disney.go.com/tickets/ or other authorized outlet

Top Things You Should Know (Subject to change)

Here are the top things you need to know as you prepare to visit.



Park Reservations

Park attendance is managed by a new theme park reservation system.

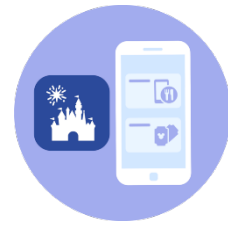
[Read More](#)



Face Coverings

It is strongly recommended that Guests wear face coverings when indoors. It is optional to wear face coverings in outdoor common areas.

[Read More](#)



Download the Official Disneyland App

Make the most of your visit with the official Disneyland App!

[Read More](#)

Special Programs – Rockin' Around the Clock

Start Point: Disneyland, 1313 Disneyland Drive, Anaheim, CA 92803-3232

Directions to Disneyland: I-5 North or South to Anaheim area. Coming from I-5 North, take Disneyland Way Off-ramp. Otherwise, follow freeway signs for off-ramp to Disneyland. Then follow signs to the Mickey and Friends parking area.

Plan Ahead! Go to [Disneyland Resort Web Site](#) for Park dates, attraction information and special event considerations. [Disneyland Map Link](#) and [Disney California Adventure Map Link](#) Pick up the latest park maps when you arrive and be prepared to improvise if unforeseen changes or closures affect your chosen visit day.



Welcome to the happiest walk on earth! Feel free to stop at any time to enjoy the shops, rides, and, restaurants or to take pictures. Simply continue on the route when you are ready. This walk is for fun. At times you may encounter groups of people who are also enjoying their special adventure so remember that this will take longer than most 10k walks you do. Have a wonderful time! Your adventure begins when you park in the Mickey and Friends Parking Structure.

1. After parking, mark down where you are parked on your receipt.
2. Proceed to the escalators and continue down to the shuttle staging area. Get on the Mickey and Friends Tram after passing through the Security Check.
3. You will be arriving at **Downtown Disney District**, a shopping, theater, and, restaurant area of the Disneyland Resort. This area is outside of the Theme Parks. The walk will finish by going to the end with a stroll through Downtown Disney Resort, so unless you want to take a side trip right now, go to your left. Then continue either to a booth to buy your Park Hopper ticket or directly to one of the entrances to Disneyland with pre-purchased Park Hopper ticket.
4. Get into the lines to your left. **You will be walking in Disneyland Park first.** As you enter the park, be sure to pick up a map of the park and a schedule of events for the day. *Put your Park Hopper ticket in a safe place, you will need it later.*
5. Enter Disneyland Park through the archway to your left. Notice City Hall on your left at Town Square. This is where lost and found is (that includes lost parents). Kids will be returned here, if you become separated. There are restrooms to the right of City Hall and throughout the park.
6. Walk down Main Street, U.S.A. toward the Sleeping Beauty Castle and turn right just past the Photo Supply Co. You are headed toward Tomorrowland.
7. When you get past the entrance of Hyperspace Mountain, follow the path to the left passing Star Wars Launch Bay and Finding Nemo Submarine Voyage, keeping the Matterhorn on your left, It's A Small World on your right, and go all the way to the end of Mickey's Toontown.
8. Turn around and return out of Toontown.
9. Pass the first walkway on your right that goes to the Disneyland Railroad station and Fantasyland Theatre, and veer to the right on the next path toward Fantasyland.
10. Right at the entrance to Storybook Land, and right again, behind Dumbo, The Flying Elephant. There is a photo op here.
11. Continue to the right, past Casey Jr. Circus Train toward Adventureland.
12. Continue straight ahead past the path(s) on right leading into Star Wars: Galaxy's Edge
13. The back of Big Thunder Mountain Railroad will be on your left.
14. Right at Mark Twain Riverboat. Next stop is the raft to Pirate's Lair, an unchartered island.
15. If Tom Sawyer Island is shut down, jump to #18. Otherwise take the raft to Pirate's Lair.
16. After finding the treasure, continue on the path keeping the fort on your right. Pass the front of the fort and walk on the path downhill, with the water on your right. Watch for an opening on your left with a restroom sign ahead. The path takes you to and across a suspension bridge.



AMERICA'S WALKING CLUB

— ESTABLISHED 1976 —

Anaheim - Disneyland

10k Rated: 1B Y0794

Page 3 of 4

17. At the end of the bridge, go through the exit gate and turn right. Follow the path back down and out to the outer island path. Turn left and follow the path that returns you back to the raft and New Orleans Square.
18. Exit the raft and turn right. Walk to The Many Adventures of Winnie The Pooh.
19. Circle the character photo shoot tree and begin back, keeping Splash Mountain on your right.
20. Just past the Haunted Mansion take the path to the right and continue as it passes the railroad station and the back of the French Market Restaurant.
21. Continue through the shops, taking Royal St. past the caricature artists of New Orleans Sq.
22. At the Royal St. Veranda, turn right and crossover the bridge in front of Pirates of The Caribbean entering Adventureland.
23. Take the steps up Tarzan's Treehouse. When exiting Tarzan's Treehouse, continue straight to the Tiki Juice Bar, hosted by Dole Pineapple.
24. Go left and exit Adventureland through the log gates into Frontierland. Continue straight-ahead and find a small path that leads to the right, out of Frontierland. The Royal Theatre will be on your left and water ponds on your right.
25. Enter Sleeping Beauty Castle at the west side. Once in Fantasyland, go left and walk around the King Arthur Carousel until you are between the Carousel and Dumbo The Flying Elephant.
26. Walk toward the Mad Hatter hat shop, keeping Alice In Wonderland to your left. Pass Alice on your right. When you reach the path by the Sleeping Beauty Moat, turn right, and enter the Sleeping Beauty Castle from the east side.
27. Inside Sleeping Beauty Castle, go left through the castle gate. Before you is a famous photo-op. Be sure to get a picture of you, Walt and Mickey with the castle in the background.
28. Walk straight down Main Street, U.S.A. Be sure to take a moment to stop and look around.
29. Exit Disneyland Park.
30. Walk across the square to **Disney's California Adventure Park**. You will need to show your Park Hopper ticket pass to enter. Be sure to pick up a map on the way in.
31. Walk straight ahead down Buena Vista Street. Take the path to the right as it passes Starbucks.
32. Pick up a fast pass for Soarin' Over California, and then continue toward the Grizzly River Rafting Co.
33. Just before the Rafting Co., turn to the left on the smaller path. Walk down to the observation deck for a great view of the waterfalls. Continue to the left circling back to the Redwood Creek Challenge Trail on your left.
34. Enter and take the path to the right. Completely circle the Redwood Creek Challenge Trail to the entrance, and then continue straight ahead for a second loop. This time try the rope bridges.
35. Exit the Redwood Creek Challenge Trail and turn right.
36. Pass restrooms and then right through the Golden State.
37. At the Little Mermaid Ride, follow the path as it turns to the left at Goofy's Sky School.



AMERICA'S WALKING CLUB

— ESTABLISHED 1976 —

Anaheim - Disneyland

10k Rated: 1B Y0794

Page 4 of 4

38. Continue toward California Screamin'. Follow the boardwalk across the bridge. Make a very sharp right turn and cross over a second bridge.
39. Walk to the left between the Pacific Wharf Café and the Cocina Cucamonga Mexican Grill. Take a moment to visit the Bakery Tour, and, then continue through the Bountiful Valley Farm.
40. Turn right and walk to the end of Cars Land. Then turn around and return through Cars Land.
41. Turn right at the T in front of Blue Sky Cellar, and, then right again into A Bug's Land. Circle counterclockwise and exit A Bug's Land.
42. Turn right, pass Carthay Circle, and turn right again at Hollywood Blvd.
43. Keep right and enter Hollywood Pictures Backlot. Walk to the Hyperion Theater featuring Aladdin and turn right to the Guardians of the Galaxy.
44. Turn around and retrace your steps past the Hyperion Theater.
45. Circle around the Hollywood Back Lot Stage, past Monsters, Inc., and then Thor Ragnarok on your right.
46. Walk to the right and exit Hollywood Pictures Back Lot, back onto Hollywood Blvd.
47. Check the time on that fast pass for Soarin' Over California. If you are within the time range, walk straight and down Buena Vista Street, and take a little glide over California.
48. After landing, return to Buena Vista Street, and exit Disney's California Adventure Park.
49. Turn left. Stroll through Downtown Disney District, all the way to the Earl of Sandwich Shop.
50. Turn around and return to the Mickey and Friends Shuttle to take you back to the Mickey and Friends Parking Structure.

Event related assistance or suggestions for improvement please contact:

Carl Cordes (702) 540-6632 or email: pa_rd@ava.org

Be sure to log back into the OSB system (my.ava.org) to finish/complete your online registration after doing the walk. The OSB system does not deduct any walking fee from a walker's Event Bank until they have submitted walk completion info including the date the event was walked, the distance walked, and the selection of applicable special programs that walker is participating in. (NOTE: The \$2 fee for event PDF Download is deducted from the user's Event Bank when the pdf is downloaded. This prepaid fee is applied against the credit fee(s) at the OSB "Finish Table" when you submit the walk completion info. However, the \$2 "coupon" for the downloaded PDF expires 60 days from download.)