

**Instructions for
Mt Angel, OR – Old German Town Y0685
Mt Angel, Oregon
5 Km Non Abbey, rated 1A Abbey 5 & 10Km rated 1C**

Walk Start Location: 1 Towers Lane Mt. Angel, OR 97251 45.06629, -122.78576

Driving Directions: 1 Towers Lane. From the north on I-5, take the Woodburn exit #271, follow the signs east to Mt. Angel along Hwy 214. Turn left on Church St./ From the south on I-5 take Market St. exit #256 (Salem). Follow the signs east along Hwy 213 to Silverton. At the traffic light, turn left on "C" St. to First St., turn left on First St./Hwy 214 to Mt. Angel. Turn right on Church St. Follow Church St. up the hill (Church becomes College St.) to Towers Lane on Left. Start Book is at the Reception Desk.

Park: Please do not park under the carport!

Restrooms: 10K at start and 1.5 K. 5K at start.

“This map and direction may only be used in conjunction with a signed American Volkssport athletic waiver. All other uses are prohibited.”

Copyright 2026, Willamette Wanders of Salem & Keizer, OR Applies to all directions and maps.

WALK COMPLETION AND CREDIT: Be sure to log back into the OSB system to finish/complete your online registration after doing the event. The OSB system does not deduct any event fee from a participant's Event Bank until they have submitted event completion info including the date the event was walked, the distance walked, and the selection of applicable special programs that person is participating in. Nevertheless, a fee of \$2 for a downloaded PDF is deducted from the user's Event Bank when the PDF is downloaded. Later, any PDF fees are credited back to a user's Event Bank when he/she submits the event completion info as a paying for credit participant. Note, however, the \$2 coupon for the downloaded PDF will expire in 60 days.

“Please use either the Online Start Box (OSB) or Physical Start Box (PSB) to register and complete the event. Do NOT mix and match, for example, by registering using the OSB then completing your event using the PSB nor signing the PSB log sheet. The sponsoring club only receives credit for an OSB participation when an OSB registration has been completed online by entering your participation date, distances, and any special programs using the OSB.”

Mt. Angel Abbey and Town Walk, 2026, Y0865, 5 & 10K, Rated 2A

Willamette Wanderers of Salem & Keizer, OR © 2026

See Table for Challenges

Emergence, 911; POC: James Westcott 503-871-4568 jwgroshong@aol.com

1. Exit Towers **Left** on sidewalk to College.
2. Carefully cross and **Left** on College.
3. **Right** on Abbey Drive, follow asphalt path past Stations of the Cross. (1K at Station XII.)
4. **Cross** Abbey Drive at crosswalk (Grotto).
5. Follow path as it crosses drive (Abbey bookstore "The Press" to the left) and goes through grove of trees into Abbey, Damian Center on your right. (Benedictine Monks from Engelberg, Switzerland founded Abbey in 1881.)
6. **Follow** sidewalk, **Left** at raised flower beds passing Abbey Library (restrooms and water in library).
7. **Continue** on sidewalk to walk **through arches** at front of Church. (Bell tower has largest free-swinging bells on West Coast.)
8. Follow brick around Abbey quad to the right.
9. Walk becomes concrete. **Left** on sidewalk to pass in front of building.
10. Follow path as it goes to the left and behind Damian Center.
11. Carefully **cross** Abbey Drive turning **Left** to return to Stations of the Cross path down to College. (2 K at crosswalk.)
12. **Left** on **College**. (3 K at Humpert Ln.)
13. **Left** on **Buchheit**.
14. **Right** on **Academy**. (note Hop fields to South).
15. **Right** on **Gilles**.
16. **Left** on **College**.
17. Carefully **cross College** and **Right** on **St. Marys** (St Mary's Church c1912) (4K)

10K WALKERS GO TO DIRECTION #20.

18. **5 K Walkers - Right** on **Taylor**.
 19. **Right** on **Alder**, just before College St turn left onto paved path. Follow path back to Start/Finish at the Towers. (5.1 K)

10K CONTINUED:

20. **Left** on **Taylor**
21. **Right** on **Garfield**. (Pioneer Cemetery originally Highland Cemetery est. 1860 Garfield & Marquam)

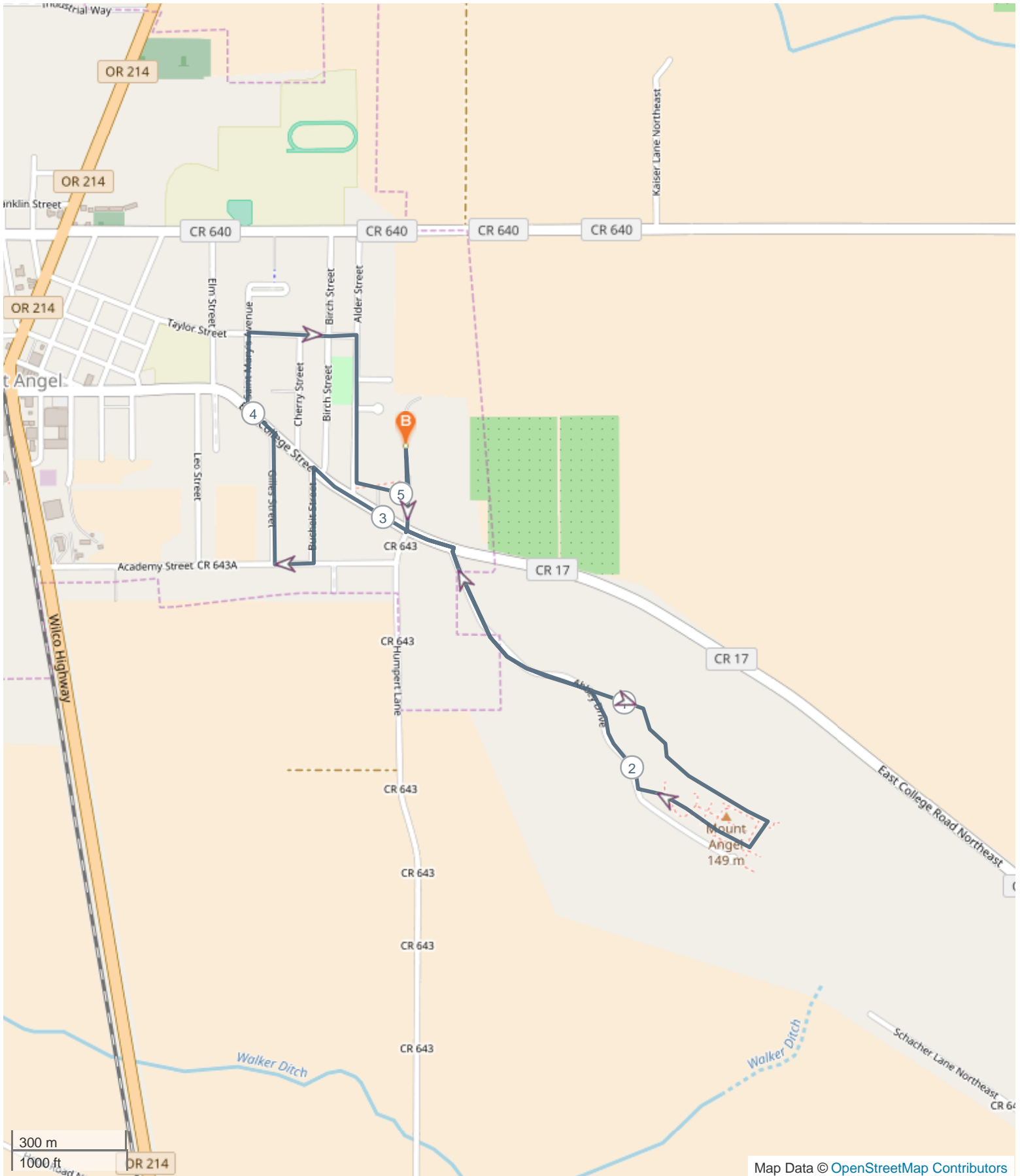
22. **Left** on **Marquam** to Monroe. (Carefully **crossing** Main.) (5K before John St.)
23. **Left** on **Monroe**.
24. Sharp **Right** on **College** (Clock in Railroad Station tower was originally in Marion County Courthouse until 1873 then in Salem City Hall until 1972)
25. **Right** on **Railroad**.
26. **Left** on **Marquam**
27. **Right** on **Spruce**. (6K)
28. **Left** on **Hayes**.
29. **Left** on **path** between 930 and 940 Hayes between two posts, into Ebner Park.
30. **Follow** path into park.
31. **Right** on **woodchip path**.
32. **Right** at "T" (playground on Right)
33. **Left** on **sidewalk** to picnic shelter.
34. **Right** through **parking lot** to Marquam.
35. **Left** on **Marquam** (no sign).
36. **Right** on **Lincoln**. (7K at 420 Lincoln.)
37. **Cross** and **Right** on **Church**.
38. **Left** on **Spruce** (gravel) into Fisher Park; continue through park to May St. (no sign)
39. **Left** on **May**
40. **Left** on **Main**. (8K at 285 Main.)
41. Carefully **cross** Main at Church using crosswalks.
42. **Left** on **Main** passing "Oktoberfest Joy" fountain.
43. **Right** at **crosswalk** and **Left** to Charles.
44. **Cross** and **Right** on **Charles**. (Glockenspiel at Charles/Garfield built 2006 largest in USA) (Tree of Trades across street recognizing businesses).
45. **Left** on **Church**. (Sheridan/Church Windishar's Blacksmith Shop c1902 on NRHP)
46. **Left** on **Elm**.
47. **Right** on **Taylor**. (9K at St. Mary St.)
48. **Right** on **Alder**, just before College St. turn **left** onto **paved path**. Follow path back to Start/Finish at the Towers. (9.9K)

These walk directions and maps may only be used in conjunction with a signed American Volkssport Association athletic waiver. All other uses are prohibited.

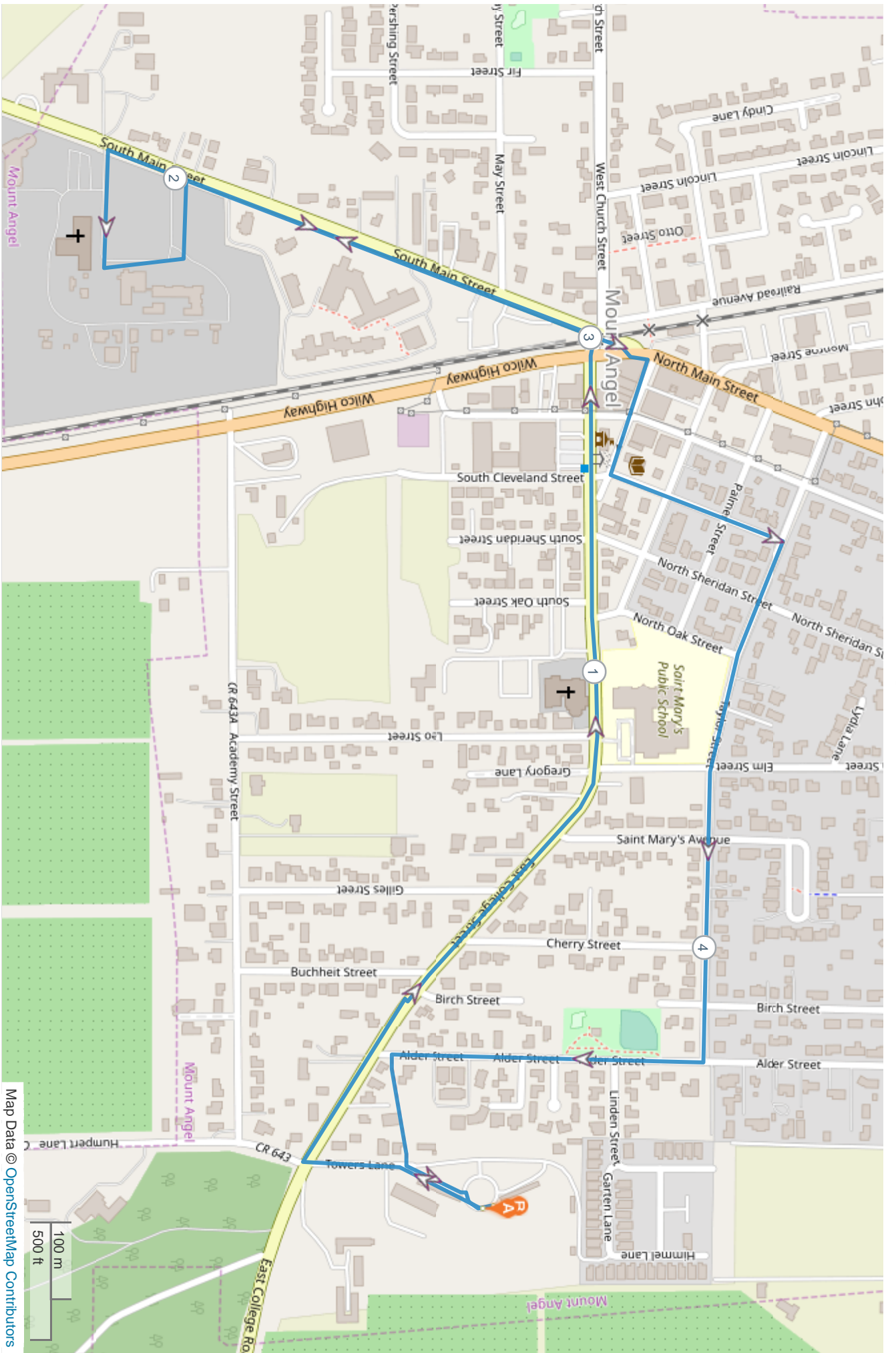
MtAngel Abbey 10k



MtAngel Abbey 5k



Mt Angel N n Abbey 5K



2026 AVA CHALLENGES	Abbey 5K	Abbey 10K	Non Abbey 5K
Step to the Beat			
LABYRINTHS			Shalon Prayer Center
VETERANE		American Legion Axillary	American Legion Axillary
WALK WIRTH THE WILD THINGS	485 Alder St.	485 Alder St.	485 Alder St.
2026 OTSVA CHALLENGES			
PALM TREES			
PARKS	Ebner Park	Ebner Park	Ebner Park
PLAYGROUND STRUCTURES	Ebner Park	Ebner Park	Ebner Park
QUAD			
QUEEN			
RECREATION CENTERS			
ROSES			
2026 ESVA CHALLENGES			
FRONT LINE HEROS			
Med Facilities			
Essential Services			
Sustenance Providers			
Delivery Services			
THAT'S ENTERTAINMENT			
Cultural			
Fair Grounds/Festivals/Arcade			
Crafts/Hobbies			
Sports Venues			
Tell Me A Story	City Library	City Library	City Library