

Buckley Town & Trail Walk YR0963

5K/10K, Rated 1A



Daffodil Valley Volkssport Association welcomes you to Buckley, WA

Starting Point: Buckley Foothill Trails Parking Lot: 314 Wheeler Ave (no sign), Buckley WA

GPS LOCATION: 47.160011, -122.033195

Restrooms: Restrooms opening soon at Parking lot, at nearby library when open, on trail behind Wally's Drive-In and at Skateboard Park. 10K Porta-Potty at Turn-around point in Enumclaw.

Driving Directions: Take SR410 east to Buckley. RIGHT on Wheeler Ave. Right to Parking Lot.

© 2025 Daffodil Valley Volkssport Association. This map and directions may only be used in conjunction with a signed American Volkssport Association athletic waiver. All other uses are prohibited.

Special Programs: AVA – A-Z (B), Par for the Course, Rails to Trails, Walking with America's Veterans

ESVA: Frontline Heroes, Pierce County, That's Entertainment, Tell me a Story



In case of Emergency Dial 911

Please use either the Online Start Box (OSB) or Physical Start Box (PSB) to register and complete the event. Do NOT mix and match, for example, by registering using the OSB then completing your event using the PSB nor signing the PSB log sheet. The sponsoring club only receives credit for an OSB participation when an OSB registration has been completed online by entering your participation date, distances, and any special programs using the OSB.

WALK COMPLETION AND CREDIT: Be sure to log back into the OSB system to finish/complete your online registration after doing the event. The OSB system does not deduct any event fee from a participants Event Bank until they have submitted event completion info including the date the event was walked, the distance walked, and the selection of applicable special programs that person is participating in. Nevertheless, a fee of \$2 for a downloaded PDF is deducted from the users Event Bank when the PDF is downloaded. Later, any PDF fees are credited back to a user Event Bank when he/she submits the event completion info as a paying for credit participant. Note, however, the \$2 coupon for the downloaded PDF will expire in 60 days.

POC:
Sharon Moats
s.moats@comcast.net
206-909-5176

Index	
Page 1	Introduction, Info and Details
Page 2	5K/10K Walk Directions
Page 3	5K/10K Map



Daffodil Valley Volkssport Association

Buckley Town/Trail 5K/10K Walk YRE 0963 Rated 1A

New Route 1/01/2025



Start Point: Buckley Foothill Trails Parking Lot: 314 Wheeler Ave (no sign)

Driving Directions: North on SR-410. RIGHT on Wheeler Ave. Right into Parking lot

Walk Directions:

Start on the paved trail on the east side of the parking lot.

1. **LEFT** on Foothills Trail.
2. **CROSS** and **RIGHT** at first street (not marked) to S. River Ave.
3. **LEFT** on S. River Ave to crosswalk at Post Office.
4. **RIGHT** and **CROSS** River Ave, continuing on sidewalk to next block (Pearl Ave).
5. **Carefully CROSS** (no crosswalk) and **LEFT** to corner.
6. **RIGHT** to continue up the right side of Mason Ave.
7. **LEFT** on "D" St. crossing Mason Ave.
8. **CROSS** and **LEFT** on Main Street.
9. **RIGHT** on "A" street N. River Ave.
10. **CROSS** and **RIGHT** on N River Ave at Park Ave.
11. **LEFT** through Buckley Log Show archway.
12. **RIGHT** behind log show festival area on gravel road.
13. **STRAIGHT** on Foothills Trail at the back of the Log Show festival area.
14. **CONTINUE** on the trail, passing the Armory, cemetery, crossing the flume, crossing the new bridge over the White River, to a Stop Sign at Mud Mountain Road. (unmarked)
5K TURN-AROUND POINT
5K turnaround and retrace your steps. Go to #17.
15. **10K CROSS** Mud Mountain Road carefully.
16. **CONTINUE** on the Foothills Trail on the King County side of the bridge.
10K TURN-AROUND POINT
10K turnaround at Warner Ave. (Note: porta-potty across the street and metal sculptures of elk). Retrace your steps.
17. **JOG RIGHT** at large Log slice at the back of the Log Show festival area.
18. **STAY ON** Foothills Trail passing the outdoor Logging Museum. Take time to go through it if you wish.
19. **CROSS** on Main Street. Continue on Foothills Trail back to the Foothills Trailhead and your car.

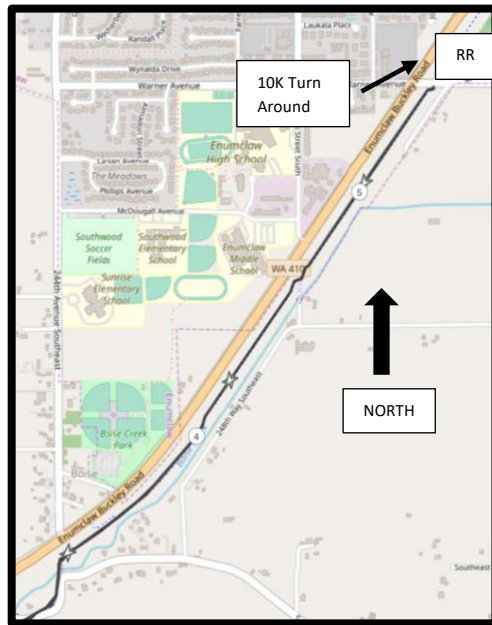
We hope you enjoyed this walk!

Copyright © 2025 by Daffodil Valley Volkssport Association. These walk directions and maps may only be used in conjunction with a signed American Volkssport Association athletic waiver. All other uses are prohibited.



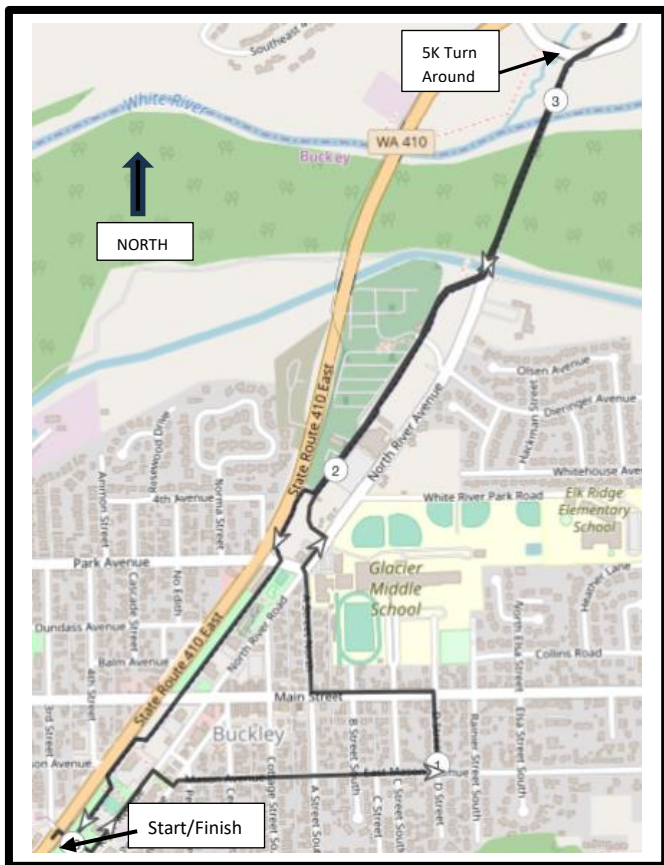
BUCKLEY YR963 10K/5K MAPS

These walk directions and maps may only be used in conjunction with a signed American Volkssport Association athletic waiver. All other uses are prohibited.



Buckley 10K Continuation

Buckley 5K



Map Credits: Plot-a-route Open Street Maps