

Issaquah Historic YR985 6K/7K/10K/20K Rated 1B



Interlaken Trailblazers welcomes you to Historic Issaquah and Tradition Lake

Starting Point: Issaquah Coffee Company 317 NW Gilman #47 Issaquah WA
GPS LOCATION: 47.5396, -122.04142

Restrooms: Gilman Village, Community Center, Fish Hatchery, Library, Confluence Park and more
Driving Directions to Issaquah Coffee Shop: 317 NW Gilman #47 Issaquah, WA From I-90 heading East. Exit 17 to Front St. Right on Gilman Blvd. Left on NW Juniper St. Turn Right into Gilman Village parking lot. Issaquah Coffee is at the west end of the parking lot. Please Park away from the store. Please use the public restrooms at the start of your walk route

Driving Directions Community Center for Loop 2 Tradition Lake: From I-90 heading East. Exit 17 to Front St. Left on Bush St. Right on Rainier Blvd S to Community Center.

© 2026 Interlaken Trailblazers Volkssport Club. This map and directions may only be used in conjunction with a signed American Volkssport Association athletic waiver. All other uses are prohibited.

Special Programs: AVA – A-Z (I) Rail to Trail, Veteran Memorial,
ESVA: That's Entertainment, Tell me a Story

Please use either the Online Start Box (OSB) or Physical Start Box (PSB) to register and complete the event. Do NOT mix and match, for example, by registering using the OSB then completing your event using the PSB nor signing the PSB log sheet. The sponsoring club only receives credit for an OSB participation when an OSB registration has been completed online by entering your participation date, distances, and any special programs using the OSB.



Emergency Dial 911

WALK COMPLETION AND CREDIT: Be sure to log back into the OSB system to finish/complete your online registration after doing the event. The OSB system does not deduct any event fee from a participants Event Bank until they have submitted event completion info including the date the event was walked, the distance walked, and the selection of applicable special programs that person is participating in. Nevertheless, a fee of \$2 for a downloaded PDF is deducted from the users Event Bank when the PDF is downloaded. Later, any PDF fees are credited back to a users Event Bank when he/she submits the event completion info as a paying for credit participant. Note, however, the \$2 coupon for the downloaded PDF will expire in 60 days

POC:
Irene Stanford
(206)228-3915
irenestanford@msn.com

Details: Several choices of lengths and routes. This walk includes 2 loops that can be combined for a total of 20K. Do one or both.

Page 1	Introduction
Page 2-3	Loop 1 6K/7K Walk Directions and Map
Page 4-5	Loop 1 6K/10K Walk Directions and Map
Page 6-7	Loop 2 10K Walk Directions and Map



Emerg:
Dial 911

Issaquah – Historic and More YR985 6K/7K 1A (Rev 1/30/2026)

Start: Issaquah Coffee Company 317 NW Gilman #47 Issaquah WA

Restrooms and water: Gilman Village, Community Center, Library, Confluence Park (seasonal)

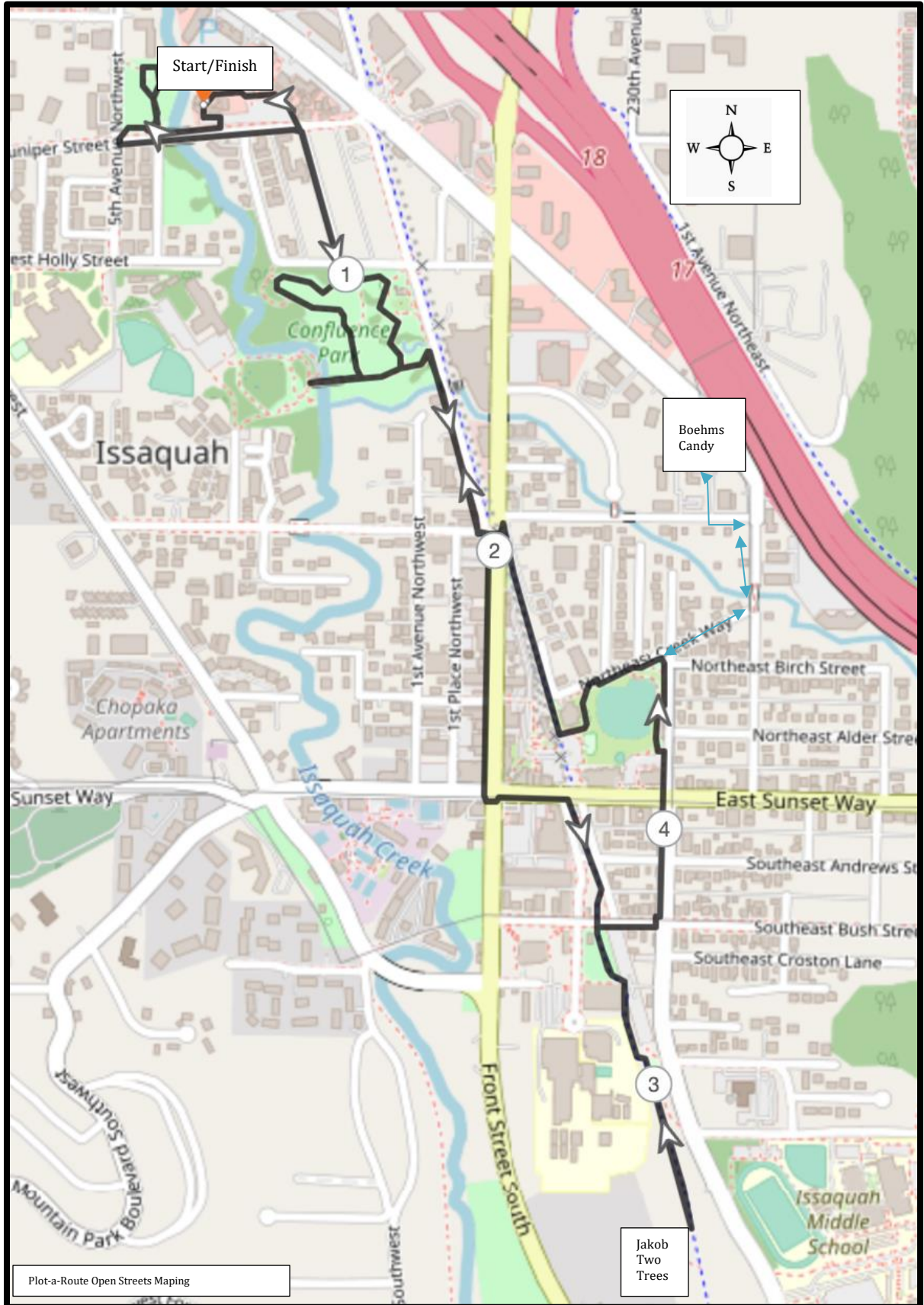
This map and directions may only be used in conjunction with a signed American Volkssport Association athletic waiver. All other uses are prohibited. POC: Irene Stanford (206)228-3915

© 2025 Interlaken Trailblazers Volkssport Club.

- 1) Exit Issaquah Coffee Company and **LEFT** down the stairs.
- 2) **LEFT** on the sidewalk beside the coffeeshop.
- 3) In about 30 feet, **RIGHT** to walk to the entrance of the parking lot.
- 4) **RIGHT** at the street (NW Juniper St)
- 5) **CROSS** the bridge, **RIGHT** into Salmon Run Nature Park.
- 6) Follow the trail keeping right. Follow the curve to a sharp **LEFT** at the **T** and join the start of your loop. Continue on the trail and stay right on the trail to exit the park onto NW Juniper St.
- 7) **CROSS** Juniper St in crosswalk.
- 8) **LEFT** on Juniper St to 2nd Ave NW.
- 9) **RIGHT** on 2nd Ave NW to NW Holly St.
- 10) **CROSS** NW Holly St into Confluence Park.
- 11) Follow the trail to the 4-way. **RIGHT** as it curves through the park.
- 12) At the “T” (near Picnic shelter), **RIGHT** to cross the bridge, enjoying the views of Issaquah Creek.
- 13) Turn around and follow the path ahead as it angles out of the park to Rainier Blvd N (unmarked).
- 14) **RIGHT** on Rainier Blvd to NW Dogwood St.
- 15) **CROSS** NW Dogwood St.
- 16) **LEFT** to Front St.
- 17) **RIGHT** on Front Street and walk along the street admiring the many shops and store fronts.
- 18) **CROSS** East Sunset Way, then **LEFT** to **CROSS** Front Street.
- 19) At the Rainier Trail (sign) **RIGHT** to follow the trail past the Issaquah Alps Clubhouse (yellow house on your right).
- 20) **CROSS** SE Bush St and follow the trail toward the Issaquah Community Center.
- 21) Keeping the Community Center on your right, continue on the trail to *Jakob Two Trees, the Issaquah Troll*. (Note the detail in his creation.)
- 22) Turn around and retrace your path back to Bush St.
- 23) **RIGHT** on Bush St. to 2nd Avenue SE.
- 24) **LEFT** to **CROSS** Bush St and continue to NE Birch St.
- 25) Follow the sidewalk/path as it veers left keeping the ballfield fence to your left and bldg. on your right. *(For an added 1.2K you can visit the Boehm’s Candy Shop. Continue past Birch to NE Creek Way and **RIGHT** on NE Creek Way to 3rd Ave NE. **LEFT** and go over the bridge. **LEFT** at Dogwood St then **RIGHT** into the parking lot for Boehm’s Candy. [NOTE: to the right of the store is a garden, chapel and statuary area you might find interesting if you have a few minutes. Stop in and say hi to the folks at Boehm’s...you may even get a free sample). Exit the area walking through the parking lot between the store on the right and the garage on the left. Gravel parking area turns into a paved road. Take this road out to NE Dogwood Street. (unmarked) **VEER LEFT** to return to 3rd Ave NE, **RIGHT** and back over the bridge and **TURN RIGHT** on NE Creek Way. **Go to Step 26.***
- 26) Follow path/NE Creek Way keeping ballfield on your left to the entrance on your left into Veteran’s Park (note red lamp post). Wind through the park toward the Memorial (Senior Center) and then stay right and exit the park near the Train Depot.
- 27) **RIGHT** on the Rainier Trail (not marked). Follow to just before NW Dogwood St.
- 28) Use the lighted crosswalk to **CROSS** Front Street.
- 29) **RIGHT** on Rainier Blvd staying on left side of the road.
- 30) **LEFT** at light brown paved path through 3 brown metal posts into Confluence Park.
- 31) **RIGHT** at the first path toward restrooms and onto the gravel path past the children’s play area.
- 32) Continue on the path keeping the play area on your left.
- 33) At the 4-way, **RIGHT** to exit park at 2nd and NW Holly.
- 34) **CROSS** NW Holly and continue on 2nd Ave NW to NW Juniper St.
- 35) **CROSS** (at crosswalk) and **RIGHT** on Juniper St a few steps to the entrance to Gillman Village on your left. Go up the steps and enter the village strolling past the shops returning to your start point at Issaquah Coffee Company. Enjoy your after-walk treats!
We hope you enjoyed the walk!

YR985 6K/7K

This map and directions may only be used in conjunction with a signed American Volkssport Association athletic waiver. All other uses are prohibited. © 2026 Interlaken Trailblazers Volkssport Club.





Issaquah – Historic and More

YR985 6K/10K Rated 1B (Rev 1/22/2024)



Emerg: Dial 911

Start: Issaquah Coffee Company 317 NW Gilman #47 Issaquah WA

Restrooms and water: Gilman Village, Community Center, Fish Hatchery, Library, Confluence Park and more

This map and directions may only be used in conjunction with a signed American Volkssport Association athletic waiver. All other uses are prohibited.

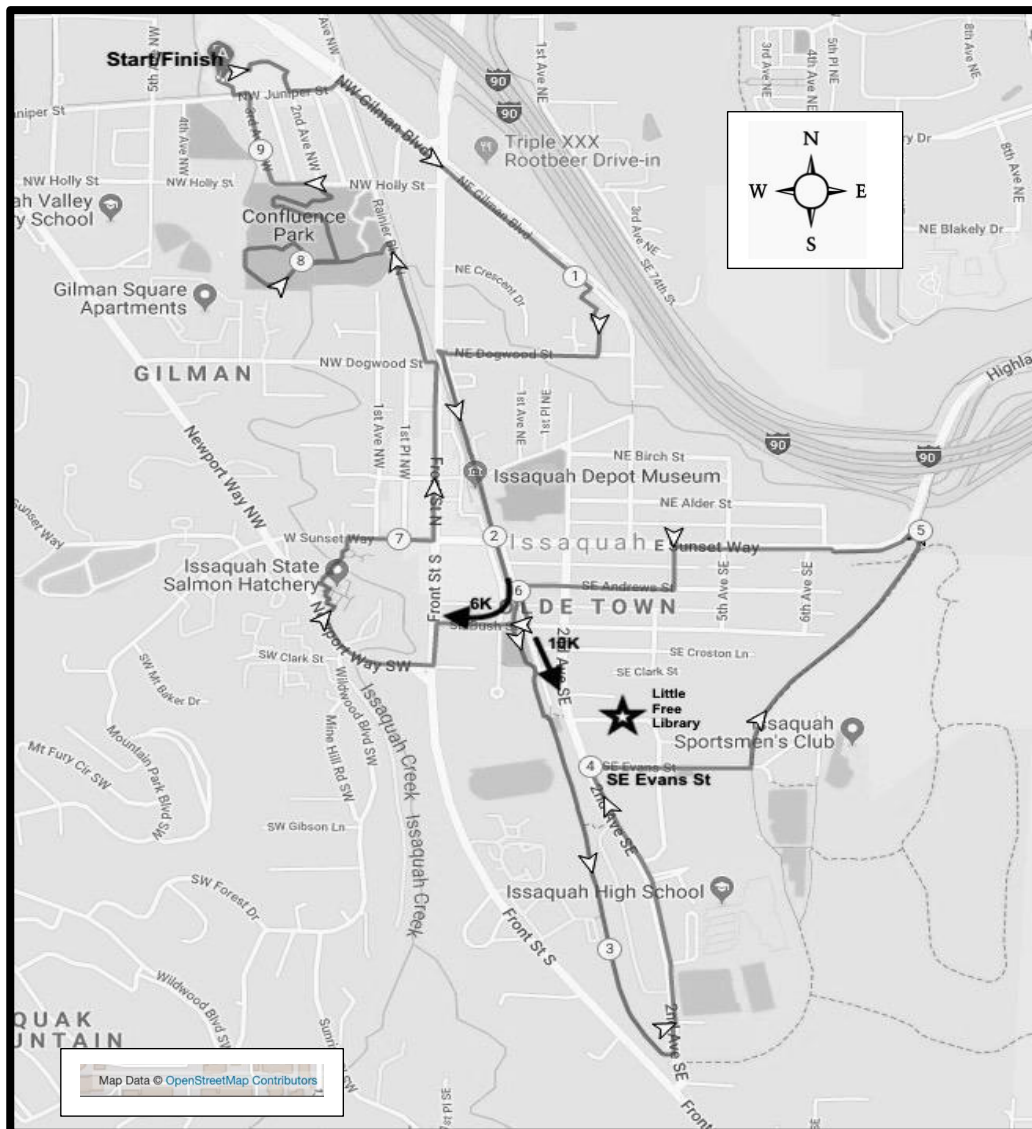
© 2024 Interlaken Trailblazers Volkssport Club.

1. Exit Issaquah Coffee Company and **TURN RIGHT**.
 2. In about 30 feet **TURN RIGHT** to walk through Gilman Village. On your left side, just past Mudhouse Pottery are the **public restrooms**. Continue through the village.
 3. When you reach Building 13, on your left, **RIGHT** to exit Gilman Village to NW Juniper St (not marked)
 4. **LEFT** on NW Juniper St to Gilman Blvd.
 5. **RIGHT** to **CROSS** NW Juniper St. Continue on NW Gilman Blvd crossing several streets.
 6. Carefully **CROSS** Front St with the light. Continue several blocks to the driveway of Boehms Candies.
 7. Boehms Candies is on your right as NW Gilman Blvd begins to curve right. **VEER RIGHT** into the Boehms parking lot. *[NOTE: to the right of the store is a garden, chapel and statuary area you might find interesting if you have a few minutes. Stop in and say hi to the folks at Boehms...you may even get a free sample.]*
 8. Walk through the parking lot between the store on the right and the garage on the left. Gravel parking area turns into a paved road. Take this road out to NE Dogwood Street. (unmarked)
 9. **CROSS** and **RIGHT** on NE Dogwood Street to Front St
 10. **LEFT**, on sidewalk at Front St and immediately **LEFT** onto The Rainier Trail. (*Veterans memorial: Before the Depot, go LEFT toward the Senior Center. Memorial on the left side of center front*) Return to the trail.
 11. The trail takes you past the **Historic Train Depot** on your right and **City Hall** on your left at Sunset Way.
 12. **CAREFULLY CROSS** Sunset Way with the crosswalk and continue on Rainier Trail.
- 6K Walkers – Walk to Bush St just past the Harvey Manning Statue on your left. Go to direction 23.**
- (If you want to view the Issaquah Troll, Jacob Two Trees, follow Step 13 to the troll then retrace your steps back to the 6K instructions)**
13. **VEER LEFT** as you approach the Issaquah Community Center staying on the wide Rainier Trail for another 1K.
 14. Trail ends at the stop sign at 2nd Ave SE. (unmarked) At the crosswalk **CROSS** then **LEFT** continuing on the right side of 2nd Ave SE.
 15. You'll pass Issaquah High School then Clark Elem on your right. ****At Evans St. CROSS and RIGHT** continuing up the left side of SE Evans St. *(To see the Labyrinth: Continue and turn RIGHT on Darst St. It is in the backyard of St Michael and All Angels Episcopal Church. Continue on Darst and RIGHT on 4th, LEFT on Evans and follow #16.)*
 16. When the pavement ends, take an immediate **LEFT** on the gravel path. (Sign "Do not block gate") You will walk about 1K on this trail.
 17. **LEFT**, downhill, at the 4-way gravel path intersection. There are several paths after turning, they all lead to the same place, the E. Sunset Way Trailhead. Pass the Information Board/Map and the Trailhead sign. (5K)
 18. **CONTINUE** and **ANGLE RIGHT** to E Sunset Way (not marked)
 19. **LEFT** on E Sunset Way to 4th PL SE.
 20. **LEFT** to St Andrews St.
 21. **CROSS** and **RIGHT** on St Andrews St to Rainier Blvd S. *[note the Issaquah Museum at "165" and take a peek at the historical jailhouse behind it!]*
 22. **LEFT** on Rainier Blvd S.
 23. **RIGHT** on Bush St and continue to Front St S.
 24. **LEFT** to **CROSS** Bush St to SE Clark St.
 25. **RIGHT** to **CROSS** Front Street at light continuing on the right side of SE Clark Street (becomes Newport Way).
 26. **CROSS** Wildwood Blvd SW. In 50 yards, **RIGHT** on asphalt driveway entering the Issaquah Fish Hatchery. Walk between the 2 fish holding areas. *(if the Hatchery is closed, continue straight to Sunset and turn right, go to Step 31).*
 27. Shortly after the holding tanks, **LEFT** on cement downhill pathway to the fish ladder. **RIGHT** after the fish ladder and up the steps or walkway to the bridge crossing over Issaquah Creek. (7K)
 28. **ANGLE RIGHT** after crossing the bridge. The restrooms will be on your right.
 29. Continue ahead toward the flag pole then **LEFT** to Sunset Way.

30. **RIGHT** on Sunset Way to Front Street.
31. **LEFT** on Front Street walking on the left side.
***Restrooms are available at the Issaquah Library during operating hours.
32. Walk on Front Street to NW Dogwood Street.
33. **CROSS** NW Dogwood Street and
34. **LEFT** to **CROSS** Rainier Blvd N.
35. **RIGHT** on Rainier Blvd N.
36. **LEFT** at light brown paved path through 3 brown metal posts into Confluence Park.
37. Stay on the path and walk toward the Mayfly Bridge in front of you.
38. **CROSS** the bridge then after 100 feet **TURN RIGHT** to the gravel trail.
39. You are now in Margaret's Meadow. Continue along the path keeping to your left as you continue on the loop.

40. When you reach the wide gravel trail again **TURN LEFT** back to the bridge.
41. Just after crossing the bridge, **LEFT** on the gravel path. You are now on the Cybil Madeline Loop Trail. At the "Y" **TURN LEFT**.
42. Stay on the main trail. At the "4-way" trail intersection **TURN LEFT** to exit the park.
43. **CROSS** and **LEFT** on NW Holly St. Continue for 2 blocks. Street turns right and becomes 3rd Ave NW. Continue to NW Juniper St.
44. **CAREFULLY CROSS** NW Juniper St.
45. **TURN LEFT** and continue down the driveway in front of Issaquah Coffee Company and finish. Enjoy your after-walk treats!

We hope you enjoyed the walk!





Issaquah Historical – Loop 2 Tradition Lake



Dial 911

YR0985 10K Rated 2B

Reg at Issaquah Coffee Company. You will drive to the Issaquah Community Center to start your walk. (1 mi)

© 2024 Interlaken Trailblazers Volkssport Club.

This map and directions may only be used in conjunction with a signed American Volkssport Association athletic waiver. All other uses are prohibited.

Restrooms: At Community Center and High Point Trail Head (4.5K)

Driving Directions: Leaving from the parking lot: Turn left on NW Juniper St to Rainier Blvd. Right on Rainier Blvd to Dogwood. Left on Dogwood. Right on Front St. Left on Bush St. Right on Rainier Blvd S to Community Center.

1. Keeping the Community Center to your right enter the paved trail (Rainier Trail) to 2nd Ave SE (Head south on east side of building) (1k)
2. **CROSS** 2nd Ave SE (unmarked) in crosswalk
3. **ANGLE RIGHT** through the parking lot and enter the trail on far side of lot. (may be obscured by cars) Sign #1 on left side of trail.
4. **TURN RIGHT** at sign # "2", to sign #4
5. **TURN RIGHT** at sign #4
6. **CONTINUE STRAIGHT** for 1.2k passing two trails on the left (#5 and Adventure Trail)
7. At the next intersection, **VEER LEFT** to walk on the large trail under the powerlines. In a few yards pass a sign for Tradition Plateau.
8. In .5k **TURN RIGHT** on the next trail signed "Bus Trail"
9. In .5k you will see the Connector Trail on your left. **CONTINUE** a few yards farther to view the remains of the bus on your left then return to the Connector Trail (4k)
10. **TURN RIGHT** on Connector Trail to a viewpoint and next trail (Around the Lake)
11. **TURN RIGHT** on Around the Lake Trail. Enjoy the peek-a-boo views of Tradition Lake and interpretive signs.
12. **TURN LEFT** at the next intersection.

13. **VEER LEFT** at the Y to continue route (signed for Swamp Trail) For Restrooms Veer Right & Right again then return to the trail.
 14. **CROSS** Puget Power Trail and enter Swamp Trail. (5k) **CONTINUE** .75k
 15. **VEER LEFT** at "y" to stay on Swamp Trail.
 16. **CONTINUE STRAIGHT** at an open area to stay on Swamp Trail
 17. **CONTINUE STRAIGHT** at the 2nd open area and enter Big Tree Trail. (6K) *The "Big Tree" is on your left in .5 k*
 18. **TURN LEFT** at the "T" (Brink Trail Unmarked)
 19. After posts **CROSS** a gravel trail and continue ahead through another set of posts. Signed for "Wetlands" and "Adventure" Trails
 20. **CONTINUE STRAIGHT** at intersection with Wetlands Trail. The trail climbs then descends to a "T" (7.5k)
 21. At "T" **TURN RIGHT** continue 1k to sign 4 (You are now heading back on High School Trail)
 22. **TURN LEFT** at sign 4
 23. **TURN LEFT** at sign 2 .
 24. **CONTINUE** to the parking lot and **VEER LEFT** to the crosswalk.
 25. Carefully **CROSS** 2nd AVE NE and enter Rainier Trail
 26. **CONTINUE** on Rainier Trail back to Issaquah Community Center
- Hope you enjoyed walking with us today.**

Issaquah Historical – Loop 2 Tradition Lake

