

**RITZVILLE - HISTORIC AGRICULTURAL TOWN WALK
5K and 10K SEASONAL EVENT Y1011**

In Adams County

5K is rated 1A, 10K is rated 1B

This on-line packet consists of the following 9 pages of information:

1. This information page. Parking and Restroom info is on the 5K and 10K walk directions pages.
2. 5K walk directions including Driving Directions to the walk start (one page).
3. 5K walk map (one page).
4. 10K walk directions including Driving Directions to the walk start (one page).
5. 10K walk map (one page).
- 6 - 9. A listing and map of interesting buildings and history of the town along the walk (four pages).

Thanks for participating and we hope you enjoy your walk in Ritzville.

POC: J. Blazek
509-899-6535 joeblazek1@gmail.com

© 2026 Central Washington Sun Striders

1/14/26

RITZVILLE - HISTORIC TOWN - 5K SEASONAL WALK Y1011
CENTRAL WASHINGTON SUN STRIDERS Rated 1A

Driving Directions to Start Point

Take I-90 Exit 221 (WA Hwy 261) and turn toward Ritzville. Pass Smitty's Blvd and immediately turn **RIGHT** on Bauman Street. Turn **RIGHT** into the gravel parking lot behind Zip's Drive-In (1503 Smitty's Blvd, Ritzville 99169). Restrooms available at various businesses at this freeway exit and downtown across from the train station. **47.07' 11.55" N 118.21' 55.03" W.**

In case of Emergency, call 911

1. Exit the gravel lot and turn **LEFT** on Bauman St.
2. At stop sign, turn **RIGHT** on Division Street.
(Golf course on your right).
3. Turn **LEFT** on 9th Avenue 2 blocks to Adams (no street sign at Adams but hospital is on your left).
4. Turn **RIGHT** on Adams Street.
5. Turn **LEFT** on 5th Avenue.
6. Turn **RIGHT** on Jefferson Street.
7. Turn **RIGHT** on 1st Avenue.
8. Turn **LEFT** on Adams and cross the RR tracks.
9. Immediately after crossing tracks, turn **RIGHT** on brick path next to railroad fence to *train depot* museum.
10. **Follow** brick path around to the front of depot on Railroad Ave. *(Restrooms across street from Depot)*
11. Turn **LEFT, CROSS** Railroad Ave., and proceed on Washington St (no sign) to Main Ave. *(Clock Tower).*
12. Turn **RIGHT** on Main Avenue.
13. At Division Street, turn **LEFT, CROSS** Main and turn **LEFT** on Main. **Proceed** on the opposite side of Main.
14. Turn **RIGHT** on Lincoln Street.
15. Turn **RIGHT** on Broadway. *(Pru Airfield is visible down in the valley) (VFW Hall at Broadway and Division St.)*
16. Turn **RIGHT** on Palouse Street.
17. Turn **RIGHT** on Main Avenue. *(City Hall at 216 E Main).*
18. Turn **LEFT** on Division, **CROSS** the railroad tracks and continue up a small hill on Division back to Bauman Rd.
19. Turn **LEFT** on Bauman Road
20. As Bauman curves left, go **STRAIGHT** ahead to the gravel lot and your vehicle.

POC: J. Blazek (509) 899-6535

Thank you for walking our walk event in Ritzville. These walk directions and maps may only be used in conjunction with a signed American Volkssport Association athletic waiver. All other uses are prohibited.

Copyright 2022 Central Washington Sun Striders.

Be sure to log back into the OSB system (my.ava.org) to finish/complete your online registration after doing the walk. The OSB system does not deduct any walking fee from a walker's Event Bank until they have submitted walk completion info including the date the event was walked, the distance walked, and the selection of applicable special programs that walker is participating in. (Nevertheless, a fee of \$2 for a downloaded pdf is deducted from the user's Event Bank when the pdf is downloaded. Later, any pdf fees are credited back to a walker's Event Bank when he/she submits the walk completion info as a paying for credit walker.) The \$2 "coupon" for the downloaded PDF expires in 60 days.

RITZVILLE - HISTORIC TOWN - 10K SEASONAL WALK Y1011
CENTRAL WASHINGTON SUN STRIDERS Rated 2B

Driving Directions to Start Point

Take I-90 Exit 221 (WA Hwy 261) and turn toward Ritzville. Pass Smitty's Blvd and immediately turn **RIGHT** on Bauman Street. Turn **RIGHT** into the gravel parking lot behind Zip's Drive-In (1503 Smitty's Blvd, Ritzville 99169). Restrooms available at various businesses at this freeway exit and downtown across from the train station. **47.07' 11.55" N 118.21' 55.03"W.**

In Case of Emergency, call 911

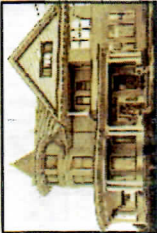
1. Exit the gravel lot and turn **LEFT** on Bauman St.
2. At stop sign, turn **RIGHT** on Division Street.
(*Golf Course on your right*).
3. Turn **LEFT** on 9th Avenue 2 blocks to Adams (no street sign at Adams but hospital is on your left).
4. Turn **RIGHT** on Adams Street.
5. Turn **LEFT** on 5th Avenue.
6. Turn **RIGHT** on Jefferson Street.
7. Turn **RIGHT** on 1st Avenue.
8. Turn **LEFT** on Adams and cross the RR tracks.
9. Immediately after crossing tracks, turn **RIGHT** on brick path next to railroad fence to *train depot museum*.
10. **Follow** brick path around to the front of depot on Railroad Ave. (*Restrooms across street from depot*).
11. Turn **LEFT**, **CROSS** Railroad Ave., and proceed on Washington St (no sign) to Main Ave. (*Clock Tower*).
12. Turn **RIGHT** on Main Avenue.
13. At Division Street, turn **LEFT**, **CROSS** Main and turn **LEFT** on Main. **Proceed** on the opposite side of Main.
14. Turn **RIGHT** on Grant Street.
15. Turn **RIGHT** on Broadway. (*Pru Airfield is visible down in the valley*) (*VFW Hall at Broadway and Division St.*)
16. Turn **LEFT** on Division Street.
17. Turn **RIGHT** at Fir Ave. and walk on the Ritzville Path.
18. **ANGLE RIGHT** at Olive, **CROSS** Fir and stay on path.
19. **Continue** on the path eventually **RECROSSING** Fir Ave.
20. **CROSS** Low Street (gravel road - no sign).
21. Follow trail as it turns **RIGHT**, down hill into fairgrounds.
22. Stay on trail through fairgrounds, exiting over a bridge.
23. Turn **LEFT** and proceed to county road (no sign).
24. Turn **RIGHT** following the gravel road to Main Avenue.
25. Turn **RIGHT** on Main Ave (no sign) and immediately turn **LEFT** and **CROSS** Main in the crosswalk to the concrete trail on the other side of Main Ave.
26. **Proceed** on the trail with Main Ave. on your right.
27. At end of sidewalk, **ANGLE RIGHT** and **CROSS** Main in the crosswalk.
28. Turn **RIGHT** on Cascade Street.
29. Turn **LEFT** on Broadway Avenue.
30. Turn **LEFT** on Palouse Street.
31. Turn **RIGHT** on Main Ave. (*City Hall at 216 E Main*).
32. Turn **LEFT** on Division, **CROSS** railroad tracks and continue up a small hill to 5th Ave.
33. Turn **LEFT** on 5th Ave.
34. Turn **RIGHT** on Chelan Street to a diagonal road. (no sign).
A school is across the diagonal road.
35. **Angle RIGHT** on the diagonal road to a stop sign at Wellsandt Road.
36. **CROSS** Wellsandt and turn **LEFT** on Wellsandt.
37. **Angle RIGHT** on Chelan Street (no sign).
38. Immediately turn **RIGHT** on 7th Avenue.
39. Turn **LEFT** on Columbia Street.
40. Turn **LEFT** on 10th Avenue.
41. Turn **LEFT** on Palouse Street.
42. Turn **RIGHT** on 8th Ave to Wellsandt Road (Stop sign but no street sign). (*School across the road*).
43. **CROSS** Wellsandt and turn **RIGHT** on sidewalk in front of school. Sidewalk will end. Continue on the road shoulder.
44. Turn **RIGHT** on Bauman Road and proceed facing traffic past a cemetery on your left to the gravel lot.

POC: J. Blazek (509) 899 6535

Thank you for walking our walk event in Ritzville.

These walk directions and maps may only be used in conjunction with a signed American Volkssport Association athletic waiver. All other uses are prohibited.

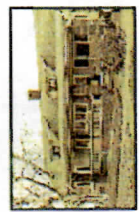
Be sure to log back into the OSB system (my.ava.org) to finish/complete your online registration after doing the walk. The OSB system does not deduct any walking fee from a walker's Event Bank until they have submitted walk completion info including the date the event was walked, the distance walked, and the selection of applicable special programs that walker is participating in. (Nevertheless, a fee of \$2 for a downloaded pdf is deducted from the user's Event Bank when the pdf is downloaded. Later, any pdf fees are credited back to a walker's Event Bank when he/she submits the walk completion info as a paying for credit walker.) The \$2 "coupon" for the downloaded PDF expires in 60 days.



37. N. H. Green House - 502 S. Adams
Built in 1902. Combines Queen Anne and Neo-Classical styles. It is on the National Register of Historical Places. Mr. Greene was an early business owner and mayor. He also built the town's first commercial brick building.



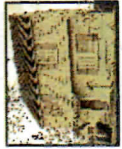
38. J. Schoessler House - 407 S. Adams
Circa 1903. Queen Anne vernacular. Early wheat farmer.



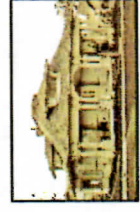
39. Armann House - 201 E. 7th
Circa 1917. An early physician and mayor of Ritzville. Craftsman bungalow with Swiss influence. House was built by Bernard Roth.



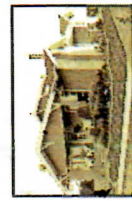
40. E. Steffen House - 601 S. Palouse
Circa 1897. Vernacular Farm style. A local businessman. Note the original out buildings.



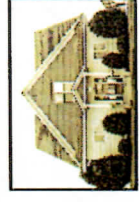
41. Edwards House - 205 E. 6th
Circa 1940. Cedar shake, saltbox style house. He was the local postmaster.



42. Snyder House - 508 S. Division
Circa 1902. Hip roofed bungalow with widow's walk. Early local businessman who built the Snyder building downtown.



43. Ratz House - 209 W. 6th
Circa 1911. Stucco craftsman style. Local pharmacist.



44. F.C. Henneberg House - 606 S. Adams
Circa 1903. Neo-Colonial style. The main feature is the Mansard roof. Featured in the 1908 Coast Magazine as the residence of F.C. Henneberg. Home (1909) of wheat farmers Jake and Barbara Bauer.



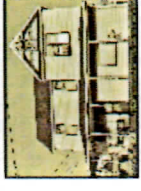
45. W.F. Eichner House - 906 S. Division
Built in 1946. Local manager of WWP office. Art Moderne house features rounded corners, flat roof, glass block and smooth wall finish.



46. Cottingham House - 103 W. 4th
Circa 1902. Example of the evolution of a home. Originally a Neo-Classical, remodeled in the late 1920s to an American-Four Square. Art Deco veranda added in 1949.



47. Fred E. Robbins House - 109 E. 4th
Circa 1901. Queen Anne style. Owner of the White River Lumber Company and early mayor of Ritzville. House featured in the 1908 Coast Magazine.



48. C.O. Greene House - 105 S. Division
Built in 1899. Queen Anne style. A contractor and lumberyard owner. Note the spindles in the gable ends and the colored glass panels in the top sashes of the second story windows.



49. B. Roth House - 316 E. Broadway
Circa 1904. Built and designed by the owner Bernard Roth. Only Tudor style house in the county. He was a carpenter who built many of the homes in the community and all the older homes on this block.



50. C. F. Clodius House - 103 E. Broadway
Circa 1888. Built for owner Christopher Clodius, this home is characterized by ornate lead and stained glass windows. It is significant for its usual blend of architectural features.



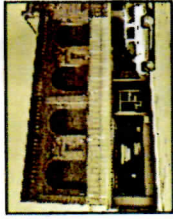
Self-Guided Tour

Ritzville Downtown Historic District

Residential Areas and Other Features of Interest

Metal Sculptures

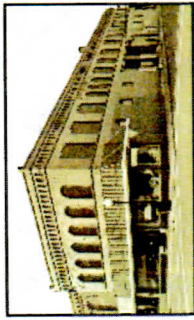
Metal sculptures produced by local artists depict area history and are located throughout town. For more detailed information, see the Metal Sculptures Tour brochure.



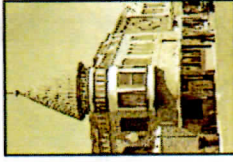
5. F.G. Spanjer Building - 204 W. Main
Built in 1898. Renaissance Revival style, characterized by the arcade of arches. In 1905 the Trading Co. purchased the building and connected it internally with theirs.

6. Ritzille Trading Company

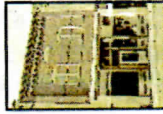
- 202 W. Main and 201 & 203 W. Broadway



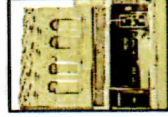
A three-part complex constructed between 1901 and 1910. Romanesque and Renaissance architecture. Original tin ceilings and leaded glass windows remain in the office. Largest commercial structure in county. Sold furniture, hardware, agricultural implements and general merchandise.



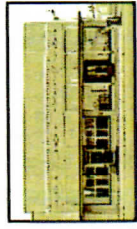
7. H.E. Gritman Building - 118 & 119 W. Main
Built in 1902 for Mr. Gritman's Pioneer Drug Co. Distinctive corner tower room and conical roof. Housed variety of offices, a saloon, billiards parlor and bowling alley.



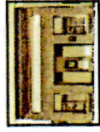
8. Wm. Snyder Building - 116 W. Main
Built in 1889. Originally a clothing store. Upper story recessed panel is framed by brick piers capped with a cornice, corbelled and dog tooth brick decoration.



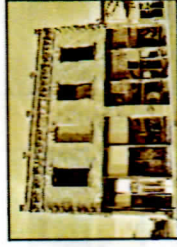
9. O.R. Haight Building - 114 W. Main
Circa 1901. Originally a mortuary, the building is crowned with a simple decorative brick cornice. The original Haight horse-drawn hearse is on display in the Depot.



10. Blackmer Building - 102 & 104 W. Main
Circa 1910. Two store fronts framed by brick piers, originally a grocery and clothing store. Capped by a cornice with simple corbel brick ornament.



18. Kalkwarf Hardware Store - 201 W. Railroad
Circa 1915. Faced in concrete, it has a simple bracketed cornice.



19. E.D. Gilson Building - 218 W. Railroad
Built in 1904. Originally housed a real estate office, post office and Odd Fellows hall. Features cream colored brick and granite. The granite corner column came from Italy.



20. Richter Building
- 101, 103 & 105 N. Adams
Circa 1903. Addition added 1910. Originally housed a carriage shop, shoe and grocery store.



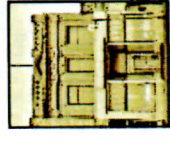
21. Adams County Bank Building - 301 W. Main
Built in 1891. Second oldest brick building in Ritzville. Established by pioneer settler J.D. Bassett in 1891. It was the first financial institution in the county.



22. Fred B. Shepley Building - 213 W. Main
Circa 1901-1904. Note the unaltered recessed entry and transom windows. This was the site of drug, jewelry, millinery and optical businesses.



23. W.C. Reeder Building - 209 W. Main
Circa 1901-1904. Originally a harness and furniture business. Features recessed brick panels, row lock brick ornament, and dentil course at the cornice.



24. A.F. Rosenoff Building - 207 W. Main
Built in 1901. Drug store was most ornately detailed building in the district. Classical Revival facade of cast stone. Has bracketed cornices with pediment and parapet, a decorative frieze with swags and Corinthian pilaster between the upper story windows. Has original storefront with display windows and recessed entry.

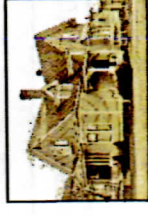
Residential Tour



30. W.R. Cunningham House
- 502 W. Broadway
Built in 1898. Example of Federal and Colonial architectural style. Most features are still intact.



31. Martha Dorman House - 608 W. Main
Circa 1917. Bungalow. Essentially unaltered.



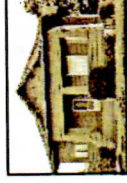
32. Orris Dorman House - 304 S. Division
Built in 1900. Queen Anne style. Mr. Dorman was in real estate and also built the Dorman brick building in the commercial district.



33. Kanzler House - 402 E. 2nd
Circa 1916. Swiss bungalow built for their retirement. Early wheat farmers who arrived in Ritzville by wagon train in 1883.



34. Bauer House - 403 S. Palouse
Circa 1912. Built for their retirement from wheat farming. Arrived in Ritzville in 1883 by wagon train.



35. Bastron House - 109 W. 4th
Circa 1905. Bungalow built for their retirement from wheat farming. Site of church services for the Philadelphia Congregational Church while the church was being built.



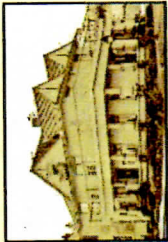
36. Danekas House - 401 W. 4th
Circa 1905 for Danekas, a wheat farmer and carpenter. Neo-Classical style, features a two-story bay window, widow's walk, Tuscan columns and swag design on concrete foundation.

Downtown Historic District

1. Burroughs Home - 408 W. Main

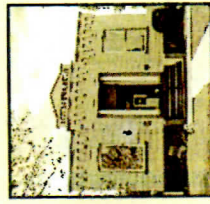
Home of the town's most prominent physician, the Dr. Frank R. Burroughs Home was built in 1890. Dr. Burroughs was

for many years Ritzville's only physician, where it is estimated that through his 37 years of practice he helped bring several thousand babies into this world.



Remodeled in 1902, the house was enlarged on both sides and the front porch with the basalt rock columns added. The house survives with few alterations and with some of the original wallpaper, floor coverings and furnishings.

Listed on the National Register for Historical Places in 1975, the Burroughs Home is one of Ritzville's most elegant. It now houses the Burroughs Museum where the doctor's instruments and library remain along with clothing and miscellaneous personal property, providing a charming example of turn-of-the-century life in Ritzville, Washington. Open to public during the summer and by appointment.

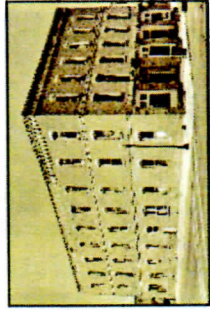


2. Andrew Carnegie Ritzville Public Library - 302 W. Main

Built in 1907 by the Andrew Carnegie Trust. Restrained Neo-Classical style. Has a pediment entry pavilion and corbelled brick cornice.

3. Ritzville Hotel - 220 W. Main

Built for Sebastian Ott circa 1896 as a wood frame hotel. In early 1900s a brick three-story structure was added to the back, connected to the front and faced with brick veneer.

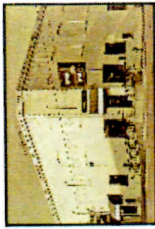


4. G.H. Lemman Building - 216 W. Main

Circa 1906. The site of an early grocery store. Has recessed entry with exterior alterations.

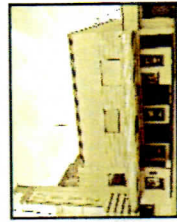
11. Pioneer State Bank - 101 E. Main

Built in 1901 by N.H. Greene. Second bank in the community, also housed the post office and a dry good store.



12. Ritz Theater - 107 E. Main

Built in 1937. Art Moderne style, stucco finish, horizontal banding and restrained cornice. Marquee with curved elements, a stepped profile and neon lighting. 400 seat capacity.



13. Weiland Building - 105 W. Main

Originally a jewelry business for Wm. Weiland and A.L. Wiffin. Has a bracket cornice and parapet with corner battlements. Decorative panels beneath the cornice.

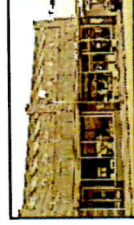


14. August Krause Building - 107 W. Main

Circa 1905. Features corner brick piers and a corbelled brick cornice.

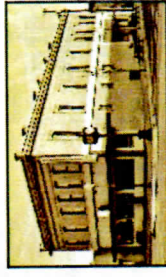
15. Thom Building - 109 & 111 W. Main

Circa 1919. Originally housed the J.C. Penney store and Thom Meat Market. It features an ornamental brick cornice and decorative diamond shaped panels.



16. N.H. Greene Building - 119 W. Main

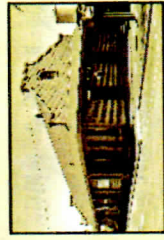
Built in 1889. First commercial brick building. Originally a general store. Classical Revival brick structure with concrete veneer. Features cast iron columns and lintels.



17. Northern Pacific Depot Museum

- Railroad & Washington

Built in 1910. Mission style with sloping eaves. The interior contains the original men's and women's waiting rooms, ticket office and freight room.

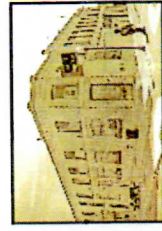


(Serves as the Visitor Information Center.)

25. Orris Dorman Building - 205 W. Main

Built in 1902. Used for real estate office and saloon. The upstairs interior includes original skylights and ballroom.

26. German American Bank - 201 W. Main



Built in 1904. Beveled corner entry features brick decorative overlapping pattern and single leaf entry door. First floor interior has antique vault, teller's cage, and tin ceilings.

Features of Interest

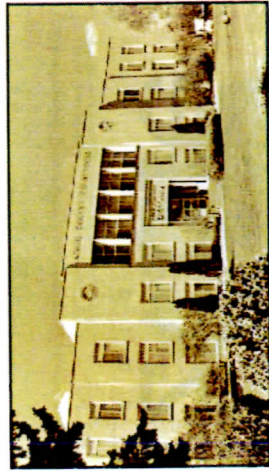
27. German Evangelical Zion Church

- 301 E. Broadway
Built in 1901. Organized by Germans from Russia who arrived in Ritzville in the mid-1880s. Listed on State Register for Historic Places (1972). Designed and built by Bernard Roth. Known as Zion Philadelphia.



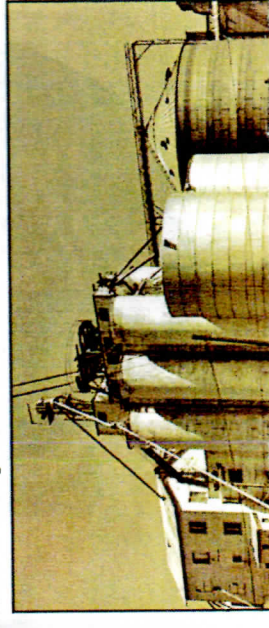
28. Adams County Courthouse - 210 W. Broadway

Built in 1941. Sculpture in stone above the doorway depicts the harvesting of grain and other activities common to a pioneer community, entitled "Men at Work".

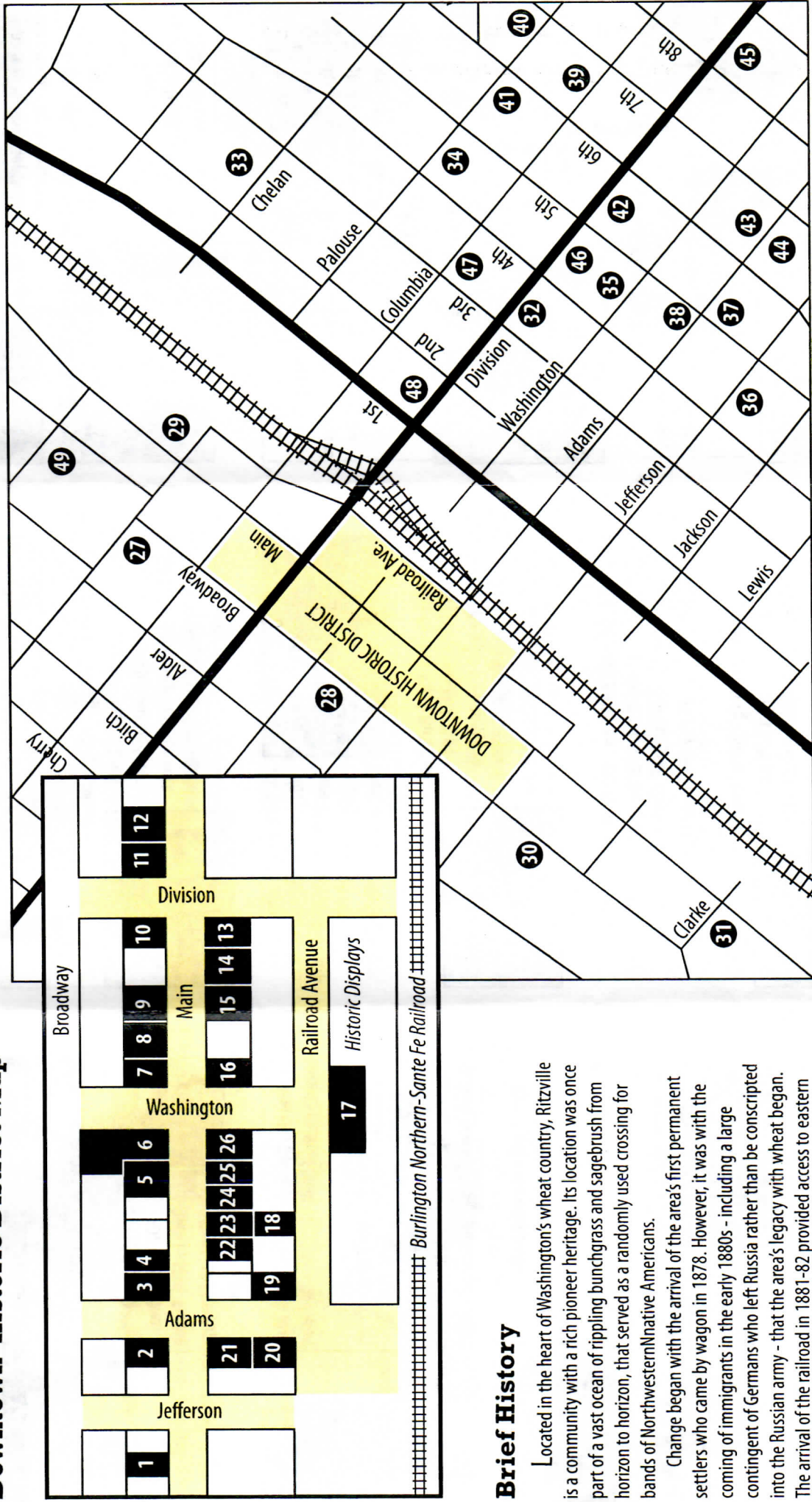


29. Ritzville Flour Mill - 304 E. Main

Built in 1906 by Sebastian and Andrew Ott. Several of the buildings are still present. Served as a flourmill until 1947 and subsequently for wheat storage.



Downtown Historic District Map



Brief History

Located in the heart of Washington's wheat country, Ritzville is a community with a rich pioneer heritage. Its location was once part of a vast ocean of rippling bunchgrass and sagebrush from horizon to horizon, that served as a randomly used crossing for bands of Northwestern Native Americans.

Change began with the arrival of the area's first permanent settlers who came by wagon in 1878. However, it was with the coming of immigrants in the early 1880s - including a large contingent of Germans who left Russia rather than be conscripted into the Russian army - that the area's legacy with wheat began. The arrival of the railroad in 1881-82 provided access to eastern markets and subsequently, Ritzville's growth accelerated.

Soon, Ritzville became a growing livestock and wheat shipping center. In those early days Ritzville bustled with settlers, cattlemen, tradesmen, merchants, wagons, steam locomotives and livestock wandered about its main street. It was a true, spirited western pioneer town. Even after a fire destroyed most of its business district in 1888, the town bounced back. It incorporated as Ritzville (named after Philip Ritz, an early pioneer) in December of the same year.

Through the 1880s and 1890s there were both boom and bust times, but by the early 1900s, Ritzville shipped more wheat than

any other inland wheat shipping port in the world. This was a time of prosperity when many fine homes and much of the business district were constructed. With the passing of time, the flavor of the community as a pioneer town survived and much of its original character remains intact.

The overall architecture of its historic district is essentially turn-of-the-century. With its National Register designation in 1990, several business owners began the process of restoration. Restoration is in the early stages and ongoing.

This brochure contains a self-guided tour of some of Ritzville's most notable residential and downtown sites. The Downtown Historic District sites are identified on their own map and are contained within an easily walkable boundary. The residential sites are more scattered but are organized on a single map for easy navigation.

**Enjoy your tour and
welcome to Historic Ritzville!**