

## WILLIAMSVILLE, NY Seasonal Walk 5 KM/10KM

Please use either the Online Start Box (OSB) or Physical Start Box (PSB) to register and complete the event. DO NOT mix and match, for example, by registering using the OSB then completing your event using the PSB nor signing the PSB log sheet. The sponsoring club only receives credit for an OSB participation when an OSB registration has been completed online by entering your participation date, distances, and any special programs using the OSB.

EVENT ID: Y1014

WALK DATES: April 1<sup>st</sup> through November 30<sup>th</sup>

START POINT: Williamsville Depot parking lot adjacent to 86 South Long St., Williamsville, NY 14221. GPS coordinates: (42.573290, -78.451132)

TRAIL DESCRIPTION: Some hills; paved walkways; quiet neighborhood.

TRAIL RATING: 2A

AWARDS AND FEES: This event is available for on line registration only. ([my.ava.org](http://my.ava.org)). A minimal charge is incurred for the directions. IVV Award –

### AVA SPECIAL PROGRAMS

Little Free Libraries

Rockin' Around the Clock

Underground Railroad

Walking the USA A – Z

Walking with American's Veterans

DRIVING INSTRUCTIONS: From Thruway (I-90) take Exit 50 to the I-290 and Exit on 7A (first exit) to Main St. East. Continue on Main St. about a mile, turn right on S. Long St. The Williamsville Depot parking lot is adjacent to 86 South Long St., Williamsville, NY 14221.

PETS: Leashed pets are allowed on all walks, and you must clean up after them.

RESTROOMS: Public Restrooms are available at Island Park, and restaurants.

AMENITIES: Important crossroads, charming village in the Town of Amherst, NY for over 200+ years. Spectacular waterfall, historic mill, new State Park. One hill near waterfall, alternate instructions available to see waterfall. Walk daylight hours.

After your walk, visit a War of 1812 Cemetery, which is commemorated on the Seaway Trail pin. For safety reasons, we could not include it on the walk. Driving Directions – from start point, turn right on Main St., turn right on Garrison Rd., which become Wehrle Drive Turn left on Aero Dr. Cemetery is on right marked by poles bearing US and British flags.

REMEMBER: You must log back into OLSB to finish online registration procedures after completing the Event.

CONTACTS: Terry McFarland, 716-531-1396, [terry.mcfarland@gmail.com](mailto:terry.mcfarland@gmail.com) or Barb Stafford, [barbstaff59@gmail.com](mailto:barbstaff59@gmail.com), phone 716-444-5768. Niagara Frontier Volkssport Web site: <https://www.niagaravolkssportclubs.org>.

These walk directions and maps may only be used in conjunction with a signed American Volkssport Association athletic waiver. All other uses are prohibited.

Copyright 2021 AVA – Niagara Frontier Volkssport Club

In case of Emergency: Dial 911  
Event related assistance, Barb 716-444-5768

## WILLIAMSVILLE 5K

**Start Point:** Williamsville Depot parking lot adjacent to 86 South Long St., Williamsville, NY 14221

1. **FOLLOW** trail to end.
2. **LEFT** onto South Cayuga Rd.
3. **RIGHT** on Main St. **FOLLOW** Main St. to **Williamsville Village Hall**, 5565 Main St.
4. **RIGHT** into parking lot **to Island Park**. **CROSS** bridge and walk around Island Park. *Restrooms available here. Park is the site of festivals as well as a favorite family picnicking spot.*
5. **LEAVE Island Park and RETURN to Main St.**
6. **RIGHT** on Main St.
7. **CROSS AND LEFT** Garrison Rd. Road changes to Evan St. (on North of Main St.) pausing at green space to read blue historic marker. **CHECKPOINT:** What was the purpose of the building that used to be where the empty lot on Garrison is now?  

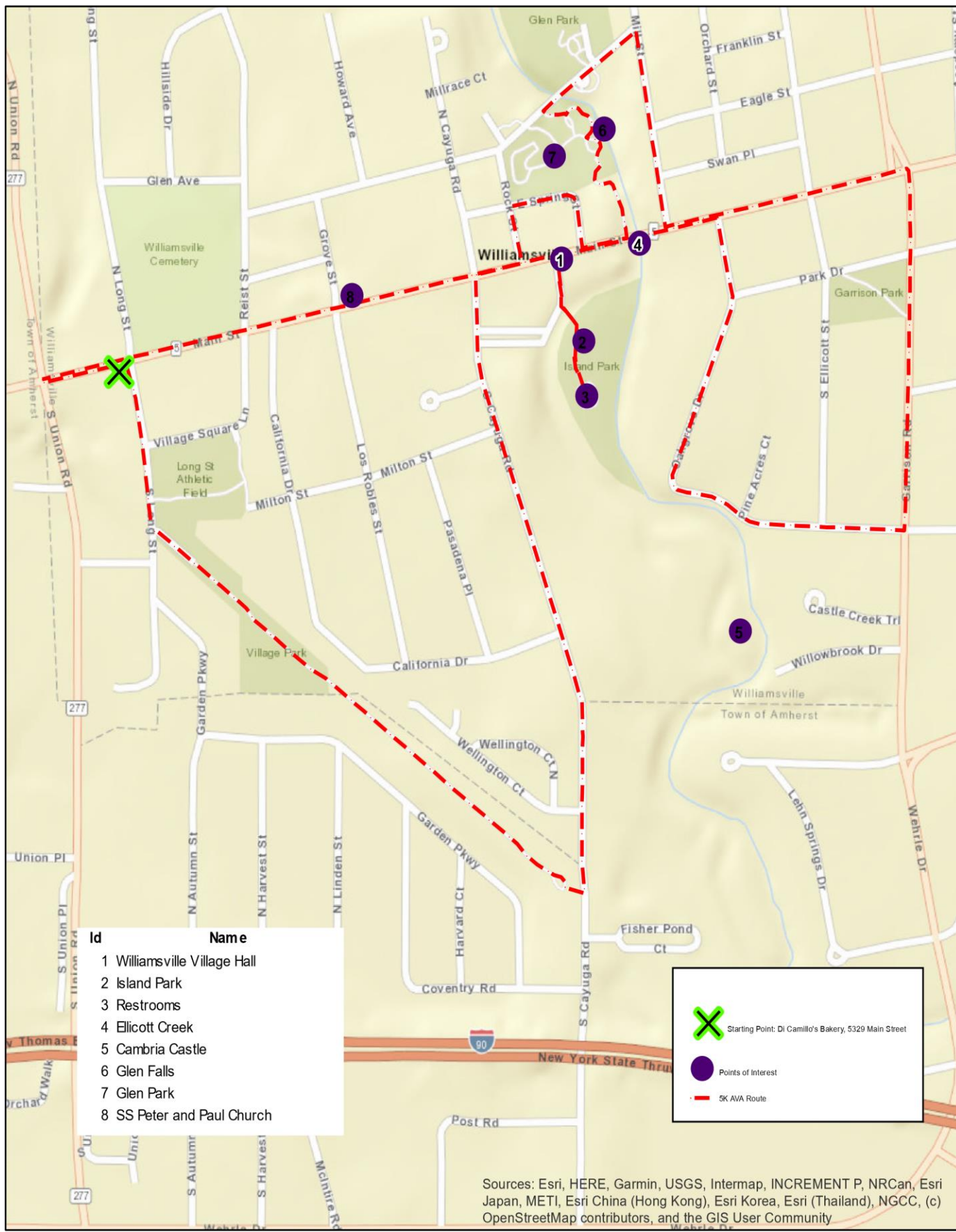
---
8. **RIGHT** on Mill St., just after historic early church.
9. **LEFT** on Glen Ave
10. **LEFT** into Glen Park to view Glen Falls. **VOLKSSPORTERS using wheelchairs can avoid uphill path through park by returning to Mill St., right on Mill St. and right on Main St.**
11. **FOLLOW** uphill path through park to Main St.

12. **RIGHT** on Main St.
13. **RIGHT** on East Spring St. past the Old Mill. *The Mill dates from 1811 and is being restored by the Town and Village.*
14. **FOLLOW** East Spring St. to Rock St. **No sign, bank is on corner.**
15. **LEFT** on Rock St.
16. **RIGHT** on Main St. *At. SS Peter and Paul Church note statue of Fr. Neumann, first pastor and a canonized saint of the Catholic Church. You will also pass a former Mennonite Meeting House.*
17. **CROSS MAIN ST. at S. Union St.** – left on Main St. to S. Long St.
18. **RIGHT** on S. Long St. *Stop at DiCamillo's for tea/coffee, pastry, sandwiches. Pass International Chimney Co. at 55 S. Long St. This company managed the relocation of the Cape Hatteras Lighthouse to safety in 1999 and received an award for this feat of engineering.* **RETURN TO CAR.**


These walk directions and maps may only be used in conjunction with a signed American Volkssport Association athletic waiver. All other uses are prohibited.


Copyright 2021 AVA – Niagara Frontier Volkssport Club


In case of Emergency: Dial 911  
Event related assistance, Terry McFarland, 716-531-1396 or Barb 716-444-5768



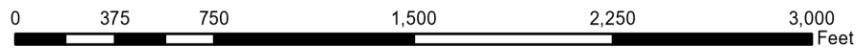
Id	Name
1	Williamsville Village Hall
2	Island Park
3	Restrooms
4	Ellicott Creek
5	Cambria Castle
6	Glen Falls
7	Glen Park
8	SS Peter and Paul Church

 Starting Point: Di Camillo's Bakery, 5329 Main Street

 Points of Interest

 5K AWA Route

Sources: Esri, HERE, Garmin, USGS, Intermap, INCREMENT P, NRCan, Esri Japan, METI, Esri China (Hong Kong), Esri Korea, Esri (Thailand), NGCC, (c) OpenStreetMap contributors, and the GIS User Community



## WILLIAMSVILLE 10K

**Start Point:** Williamsville Depot parking lot adjacent to 86 South Long St., Williamsville, NY 14221

1. **FOLLOW** trail to end.
2. **LEFT** onto South Cayuga Rd.
3. **RIGHT** on Main St. **FOLLOW** Main St. to **Williamsville Village Hall**, 5565 Main St.
4. **RIGHT** into parking lot **to Island Park**. **CROSS** bridge and walk around Island Park. *Restrooms available here. Park is the site of festivals as well as a favorite family picnicking spot.*
5. **LEAVE Island Park and RETURN to Main St.**
6. **RIGHT** on Main St.
7. **RIGHT** on Oakgrove Dr. **No sidewalks at curve in road – please use care.** *Across from Pine Acres Court, at bend in road, look right across Ellicott Creek and catch a glimpse of Cambria Castle on Dream Island.*
8. **CONTINUE** to Garrison Rd.
9. **LEFT** on Garrison Rd.
10. **CROSS AND LEFT** on Main St., (Road changes to Evan St. on North of Main St.) pausing at green space to read blue historic marker. **CHECKPOINT:** What was the purpose of the building that used to be where the empty lot on Garrison is now?

---
11. **RIGHT** on Mill St., just after historic early church.
12. **CONTINUE** about 1.2 K to **Amherst State Park**.
13. **ENTER PARK LEFT and follow paved path to front of former St. Mary of the Angels Convent which is now senior apartments.**
14. **CIRCLE AND RETURN** to Mill St.
15. **RIGHT** on Mill St.
16. **RIGHT** on Glen Ave
17. **LEFT** into Glen Park to view Glen Falls. **VOLKSSPORTERS using wheelchairs can avoid uphill path through park by returning to Mill St., right on Mill St. and right on Main St.**
18. **FOLLOW** uphill path through park to Main St.
19. **RIGHT** on Main St.
20. **RIGHT** on East Spring St. past the Old Mill. *The Mill dates from 1811 and is being restored by the Town and Village.*
21. **FOLLOW** East Spring St. to Rock St. **No sign, bank is on corner.**
22. **LEFT** on Rock St.
23. **RIGHT** on Main St. *At. SS Peter and Paul Church note statue of Fr. Neumann, first pastor and a canonized saint of the Catholic Church. You will also pass a former Mennonite Meeting House.*
24. **LEFT** on S. Forest Rd.
25. **CONTINUE** to Mischler's Greenhouses – 118 S. Forest Rd.
26. **RETURN** to Main St.

27. **RIGHT** on Main St.
28. **RIGHT** on S. Long St. *Stop at DiCamillo's for tea/coffee, pastry, sandwiches. Pass International Chimney Co. at 55 S. Long St. This company managed the relocation of the Cape Hatteras Lighthouse to safety in 1999 and received an award for this feat of engineering.* **RETURN TO CAR.**

These walk directions and maps may only be used in conjunction with a signed American Volkssport Association athletic waiver. All other uses are prohibited.



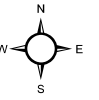
Copyright 2021 AVA – Niagara Frontier Volkssport Club\

In case of Emergency: Dial 911


Event related assistance, Terry McFarland, 716-531-1396 or Barb 716-444-5768


# American Volkssporting Association Niagara Frontier Volkssport Club Williamsville, New York


10 Km



Id	Name
1	Williamsville Village Hall
2	Island Park
3	Restrooms
4	Ellicott Creek
5	Cambria Castle
6	Glen Falls
7	Amherst State Park
8	St. Mary Apartments
9	Mischler's Greenhouse
10	Glen Park
11	SS Peter and Paul Church

 Starting Point: Di Camilo's Bakery, 5329 Main Street

 Points of Interest

 10K AVA Route

Sources: Esri, HERE, Garmin, USGS, Intermap, INCREMENT P, NRCan, Esri Japan, METI, Esri China (Hong Kong), Esri Korea, Esri (Thailand), NGCC, (c) OpenStreetMap contributors, and the GIS User Community

