

RIVERWALK YRE 5K AND 10K WALKS

This map and directions may only be used in conjunction with a signed American Volkssport Association athletic waiver. All other uses are prohibited.

Both walks begin at Riverside Parks – Riverside & 96th. The park is located at the Southwest corner of the intersection of Riverside Parkway and 96th /Delaware Street (Delaware is to the East and 96th is to the West); from this intersection, proceed South and turn Right into the first driveway and continue right to the parking lot in front of the large towers. Restrooms available at the startpoint.

Walk Registration:

Registration is available online. Use the Online Start Box (OSB) to register and complete the event.

Walk Completion:

Once you have completed the walk, please login to your Online Start Box account and click on the “My Start Box” tab, then the “Finish Table” tab, then click on “Go to Finish Table” button for the event you have completed. Use the displayed entry form to submit the date and distance of your walk as well as any applicable AVA Special Programs to generate stamped “virtual” insert cards that you may choose to print out.

MAIN STREET/RIVERWALK

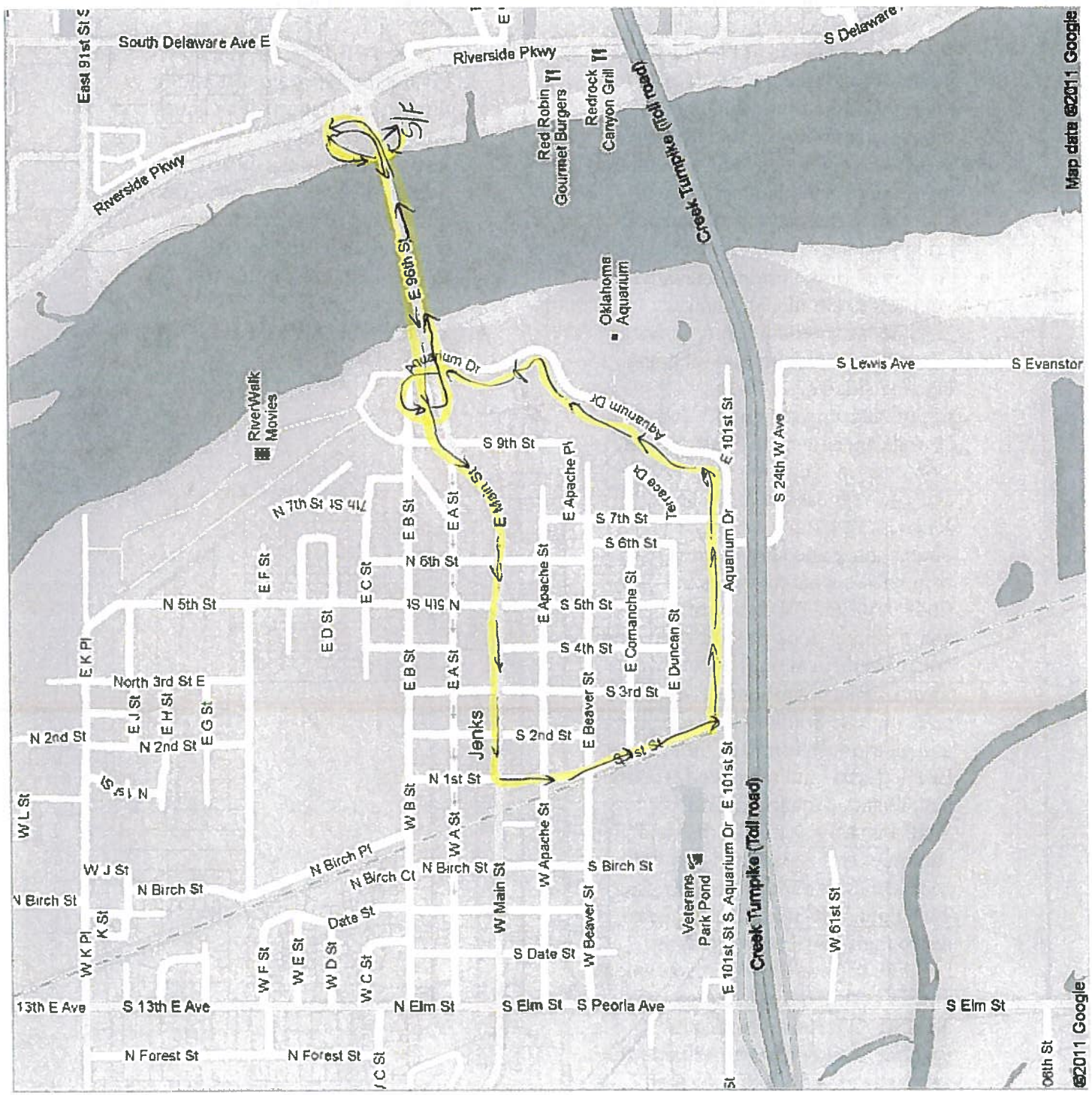
DIRECTIONS - 5K

- From the parking lot of the park walk toward the large power tower, take the paved path to the right of the tower and proceed on, passing under the two bridges.
- When you come to a split, take the right-hand path which will take you to the white pedestrian bridge. Go across the bridge.
- At the end of the bridge, meander to your left to a trail. The Jenks Lighthouse should be straight ahead. Cross the street with the light and take the sidewalk keeping the Lighthouse on your right. You will be walking alongside Main Street. Continue on (you are going West) and you will pass several shops. Jenks is known for its Antique Shops, and is known as the Antique Capital; stop and shop if you desire – who knows what treasures you may find?!
- Turn Left (South) onto 1st Street,
- Continue to the stop sign at Aquarium Drive/101st Street.
- Turn LEFT (East) onto the paved walking path (Jenk's Aquarium Trail- **Rails to Trails**) and continue on this path and you will soon see the Aquarium buildings on your right.
- Stay on this path, and you will cross under the bridge on which you began this walk.
- Just after crossing under the bridge, you will see some steps on your left, leading up to the white pedestrian bridge. Turn left at the top of the stairs and re-trace your steps back across the bridge.
- (If you do not want to take the stairs, go just a little further, and there will be a ramp on your left, taking you onto the bridge)
- As you come to the end of the bridge, the path will split. Take the left-hand path, then left again crossing under the bridges, walking toward the large power tower and returning to the parking lot.
- THANKS FOR WALKING WITH US TODAY!

EMERGENCY! CALL 911

Walk questions- call POC Teresa Arnold @ 918-630-3206

© 2025 Main Street/RiverWalk – 5K Tulsa Walking Club



MAIN STREET/RIVERWALK
DIRECTIONS - 10K

- From the parking lot of the park, walk toward the large power tower, take the paved path to the right of the tower and continue on, passing under the two bridges.
- When you come to a split, continue on the right-hand path which will take you to the white pedestrian bridge. Go across the bridge.
- At the end of the bridge, meander to your left to a trail. The Jenks Lighthouse should be straight ahead. Cross the street with the light, and turn Left to take the sidewalk keeping the Lighthouse on your right. You will be walking alongside Main Street. Continue on (you are going West) and you will pass several shops. Jenks is known for its Antique Shops, and is known as the Antique Capital! Stop and shop if you desire – who knows what treasures you may find?!
- Once past the shops, you will cross over railroad tracks. Be careful crossing. Continue on West to Date Street. Turn RIGHT onto Date Street for 2 blocks and turn LEFT onto West “B” Street and go 1 block.
- Turn LEFT (South) onto Elm Avenue. You will pass in front of Jenks **City Hall**.
- Continue along Elm Avenue to Veteran’s Blvd, (Dutch Bros Coffee on the corner) and turn LEFT (the street sign is small and in Blue) and turn LEFT. Follow Veteran’s Blvd. as it curves to the right. Enjoy the water features. (restrooms) **Par-for-the Course**
- Veteran’s Blvd curves and becomes Veteran’s Court. (Restrooms and **Par-for-the Course**) Turn LEFT onto Veteran’s Drive and then LEFT onto S. Birch Street, and a **Veteran’s Memorial** will be on your left. **CHECKPOINT:** Who does the Veteran’s Memorial honor? _____
- Turn RIGHT onto W. Beaver Street (now you are going East) and continue over the railroad tracks to S. 1st Street and turn LEFT (North).
- Continue North on 1st Street to “B” Street and turn RIGHT (East) onto “B” Street.
- Turn RIGHT (South) onto North 5th Street.

- Turn LEFT (East) onto Beaver Street.
- Turn RIGHT (South) onto S. 7th Street; just before the round-about, turn to your Left and walk on grass a short distance onto the paved walking path (Jenk’s Aquarium Trail- **Rails to Trails**) and continue on this path and you will soon see the Aquarium buildings on your right.
- Stay on this path, and you will cross under the bridge on which you began this walk.
- Stay on this path as it curves to the left until it ends. Go straight ahead to Riverfront Drive and turn Right, walking toward RiverWalk Crossing shopping center. Note the Clock (**Rockin’ Around the Clock**) With the shopping center straight ahead of you, take the first street on your LEFT, which is RiverWalk Terrace.
- Follow this street until you reach Barn Boot Camp on your right. Turn RIGHT and go to the walking trail and turn RIGHT. (South) onto the walking trail.
- Continue on this trail and you will soon see several animal sculptures and pass in front of the shops of the RiverWalk Crossing. There are several places to shop and eat here. Note the RiverWalk amphitheater where many performances are held (**Step to the Beat**)
- Follow this path and continue South past “Los Cabos” (the South end of RiverWalk Crossing) until the end of the paved path. Then angle to your right, through the parking lot toward the sign that says “To 364” To the Right of this sign, are the steps leading up to the white pedestrian bridge. Turn left at the top of the stairs and re-trace your steps back across the bridge.
- (If you do not want to take the stairs, go just a little further, and there will be a ramp on your left, taking you onto the bridge)
- As you come to the end of the bridge, the path will split. Take the left-hand path, then left again crossing under the bridges, and returning to the parking lot.

THANKS FOR WALKING! OUR YRE TODAY!

EMERGENCY! CALL 911

Walk questions – contact POC Teresa Arnold @ 918-630-3206

©2025 Main Street/RiverWalk -10K Tulsa Walking Club

