

Instructions for
Fort Clatsop & Sunset Beach, Y-1136
5/10/13km, rated 1B-5km & Sunset Beach 10km, 3C-10/13km

Walk Start Location: 92343 Fort Clatsop Rd, Astoria, OR 97103. Netul Landing parking area is 1 mile past the entry to Fort Clatsop Visitor Center and on the left. Sunset Beach Trailhead is 5 miles south of Warrenton on Sunset Beach Ln.

GPS Coords: 46.12232, -123.87707 (Netul Landing), 46.10000, -123.93723 (Sunset Beach)

Driving Directions: From Astoria continue west on hwy 30 crossing the causeway and continuing on hwy 101 south in Warrenton. Left at stop light onto Business 101 (you will pass several businesses, including Les Schwab). Left at stop sign to Ft. Clatsop Road. Right onto Ft. Clatsop Road, which you will follow about 2 miles to Fort Clatsop Visitor Parking at Netul Landing. For Sunset Beach option continue through Warrenton south on hwy 101 about 5 miles to Sunset Beach Ln and turn right. Continue straight at 4-way stop to trailhead parking on the right.

Park: Enter Netul Landing and turn left to upper lot to park near pavilion. For Sunset Beach option park in any open spaces in the trailhead parking area.

Restrooms: Pit toilets available at all trailheads, visitor center and several along the trail.

Walk Completion and Credit: Be sure to log back into the OSB system to finish/complete your online registration after doing the event. The OSB system does not deduct any event fee from a participant's Event Bank until they have submitted event completion info including the event was walked, the distance walked, and the selection of applicable special programs that person is participating in. (Nevertheless, a fee of \$2 for a downloaded PDF is deducted from the user's Event Bank when the PDF is downloaded. Later, any PDF fees are credited back to a user's Event Bank when he/she submits the event completion info as a paying for credit participant. Note, however, the \$2 coupon for the downloaded PDF will expire in 60 days.)

"Please use either the Online Start Box (OSB) or Physical Start Box (PSB) to register and complete the event. Do NOT mix and match, for example, by registering using the OSB then completing your event using the PSB nor signing the PSB log sheet. The sponsoring club only receives credit for an OSB participation when an OSB registration has been completed online by entering your participation date, distances, and any special programs using the OSB."

"These maps and directions may only be used in conjunction with a signed American Volkssport Association athletic waiver. All other uses are prohibited."

Copyright 2021, Columbia River Volkssport Club. Applies to all directions and maps.

For emergencies contact 911. Walk owner is Arline LaMear at 503-338-6883.

These directions may be used only upon registration at a currently sanctioned IVV/AVA event. For emergencies contact 911. Walk owner is Arline LaMear and she can be reached at 503-338-6883.



Fort Clatsop (Option #1)

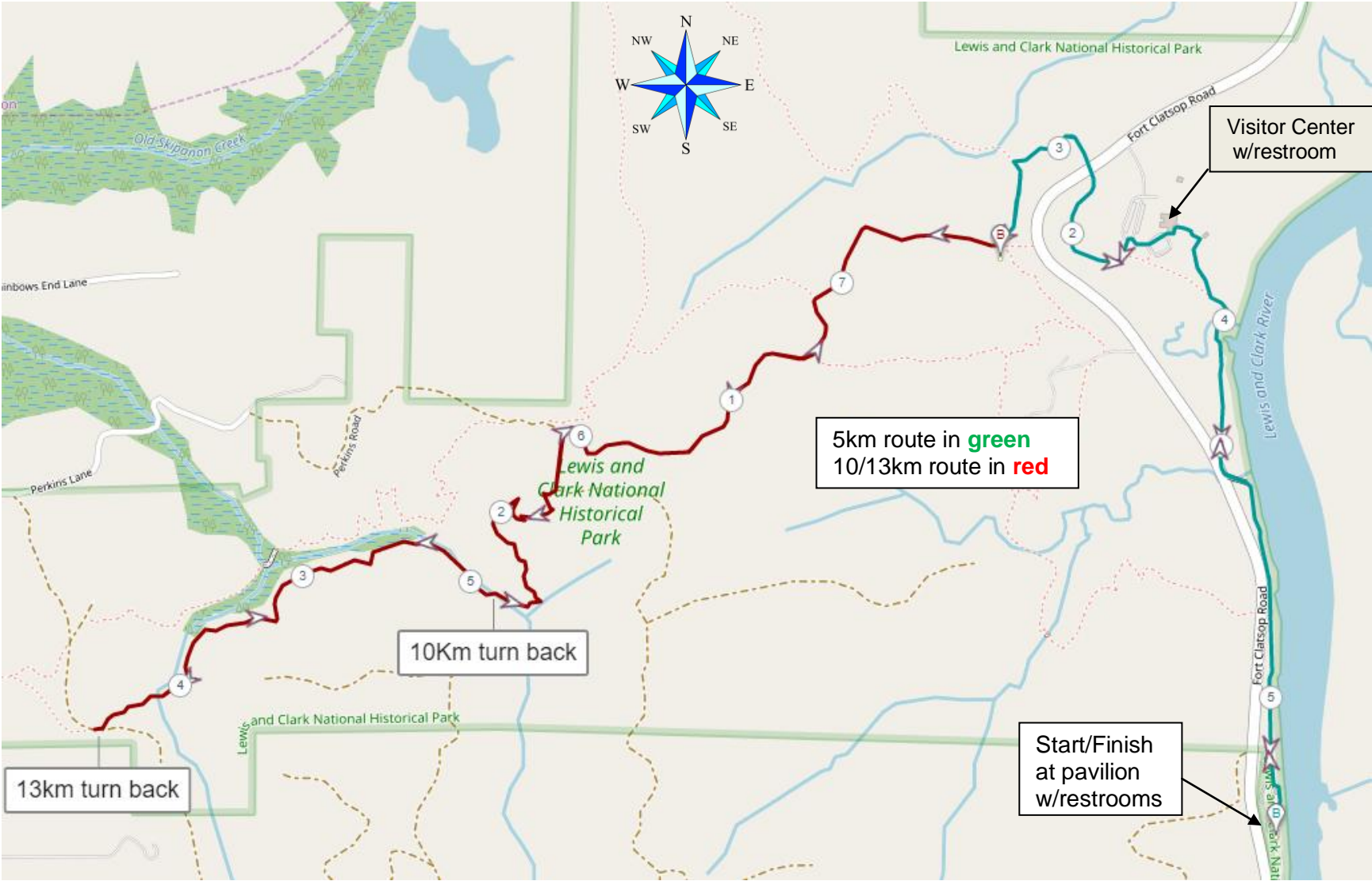
Sponsored by Columbia River Volkssport Club's
Turnaround Trekkers

5km Rated 1B, 10km and 13km Rated 3C, Stamp #1136

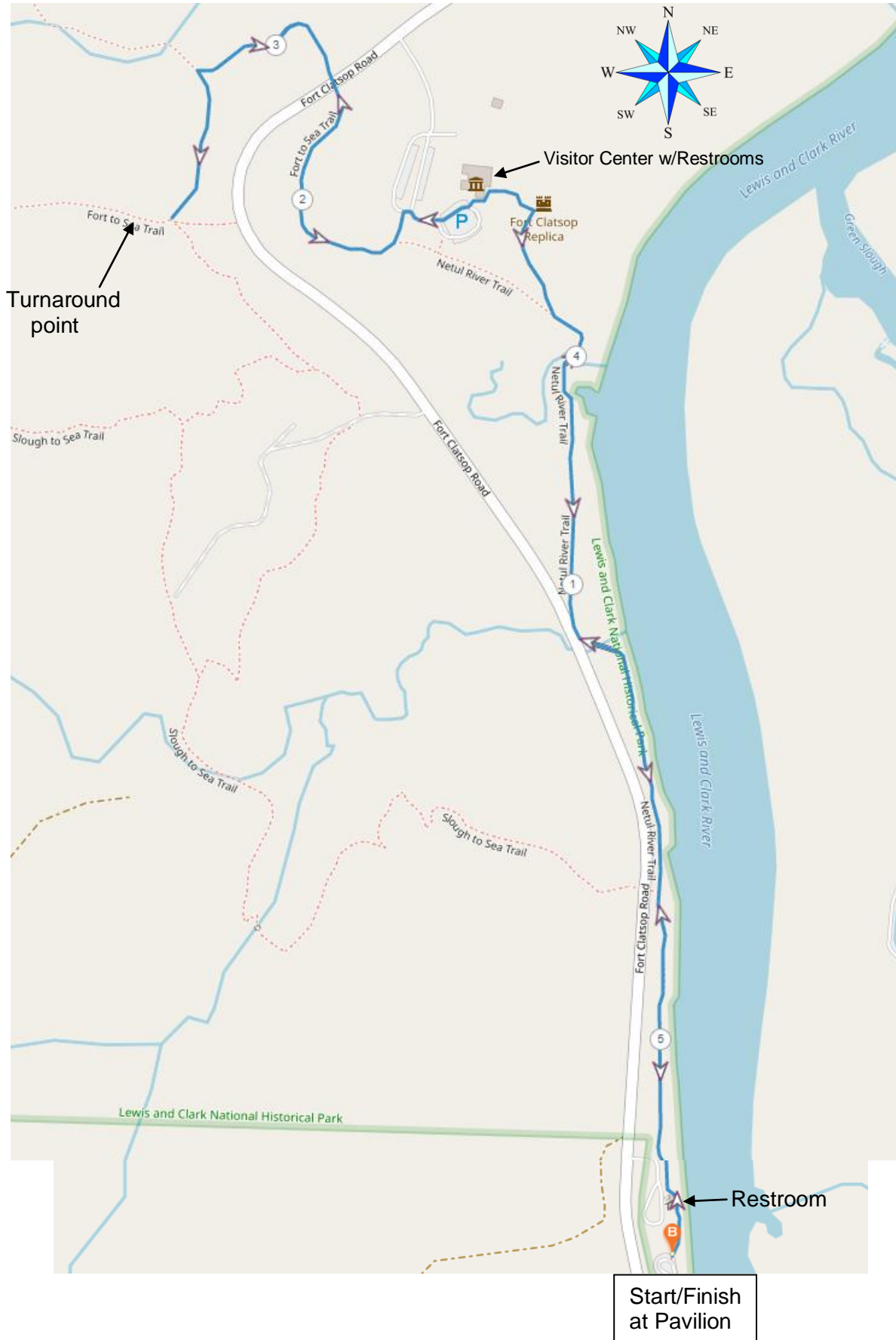


1. From the Pavilion, **proceed past restrooms onto Netul River Trail** which parallels the Lewis & Clark River.
 2. **LEFT** at "Y" toward Visitor Center.
 3. **LEFT** at "T" (drinking fountain on right – 1km) through the picnic area to pick up Fort-to-Sea Trail.
 4. **LEFT** at "T".
 5. **LEFT** at "T" toward paved two-lane road (Ft Clatsop Road – no sign) and crosswalk. **CROSS** carefully to pick up trail on other side (2km).
 6. 2.5km at wide gravel path (handicapped parking on left.)
- 5km WALKERS: TURNAROUND here and SKIP to #19 to RETRACE STEPS to your car.**
10 and 13km WALKERS: proceed with #7.
7. **RIGHT** onto gravel path which is a gradual uphill grade.
 8. 3km at Sunset Beach sign where you will **BEAR LEFT** to stay on gravel.
 9. 4km at junction with dirt lane. **BEAR LEFT** to stay on gravel continuing gradual ascent. Path bends **RIGHT** in about 200 meters to observation point.
 10. **CONTINUE** on trail to your **LEFT** going downhill. (Sign says Sunset Beach 4mi Hiker only.)
 11. 5km at bottom of switchback descent where boardwalk crosses a creek.
- 10km WALKERS: TURNAROUND here and SKIP to #15 to return.**
13km WALKERS: proceed with #12.
12. **CONTINUE** on trail as it meanders through wetland.
 13. 6.5km where trail crosses an old logging road. (Sign says Sunset Beach 3 miles.)
TURNAROUND HERE.
 14. Facing the sign that says Fort Clatsop 3mi hiker only walk back the way you came. 8km after crossing creek for the last time.
 15. Begin ascent following switch backs.
 16. 9km at observation point (on your **LEFT** as you come off the trail.) Go **RIGHT** for a short distance and then **LEFT** to get on gravel road downhill.
 17. At junction with dirt lane, **BEAR RIGHT** to stay on gravel following sign to Ft Clatsop, still going downhill.
 18. 10km just before handicapped parking access where you turn **LEFT** into woods off wide gravel path onto narrow gravel trail toward Ft Clatsop.
 19. **CONTINUE** on trail in woods. 11km at paved two-lane road (Ft Clatsop Road – no sign.)
 20. **CROSS** carefully to pick up trail on other side and **BEAR RIGHT** at "Y".
 21. 11.5km when you see the picnic shelter on **RIGHT**. **BEAR RIGHT** up a path which **BENDS RIGHT** into picnic area.
 22. **CROSS** picnic area and turn **RIGHT** onto trail (just before drinking fountain.)
 23. 12km at canoe display.
 24. **CONTINUE** along path to Pavilion. (13km)
- We hope you've enjoyed this walk and will join us on our other routes from Astoria to Portland. Visit us at www.walking4fun.club.

Fort Clatsop 5/10/13km



Fort Clatsop 5km Route



These directions may be used only upon registration at a currently sanctioned IVV/AVA event. For emergencies contact 911. Walk owner is Arline LaMear and she can be reached at 503-338-6883.



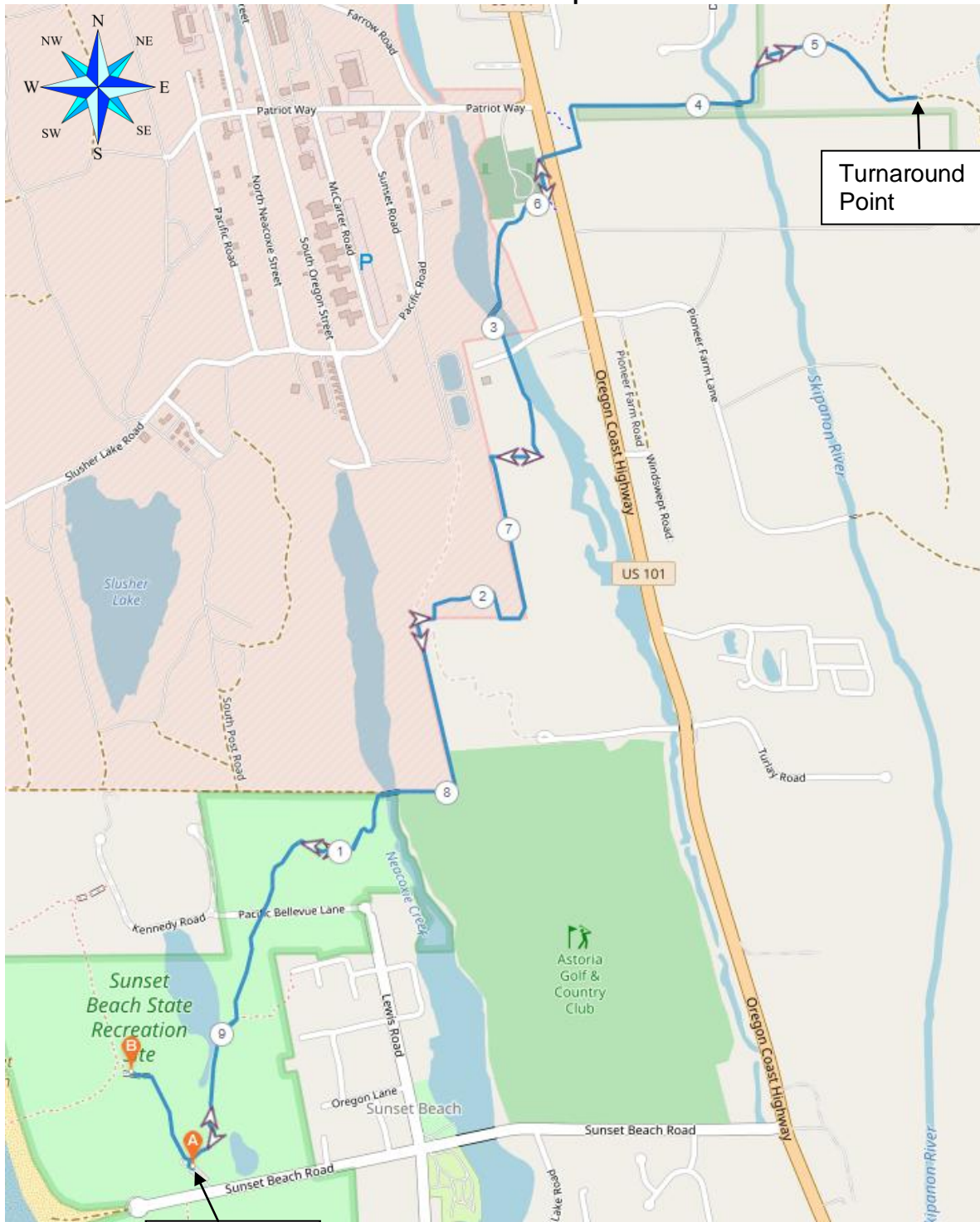
Fort Clatsop Sunset Beach (Option #2)
Sponsored by Columbia River Volkssport Club's
Turnaround Trekkers
10km Rated 2B, Stamp #1136



1. From Parking area, **ENTER TRAIL** between restrooms and sign.
2. **CROSS** gravel road (not shown on map) to pick up trail on other side. 1km just before lone old tree in hollow. Golf course to right in the distance.
3. 2km at first cattle gate. Stay on dirt trail through field.
4. Proceed through second cattle gate.
5. 2.5km at third cattle gate. (Building to left after you go through the gate is Pleasant View School (no sign.)
6. **CROSS** paved lane (not shown on map) to **CONTINUE** on trail.
7. 3km at floating metal bridge over Neacoxie Creek. You might see beaver and/or ducks here.
8. **CONTINUE** on trail to pass cemetery at Pioneer Presbyterian Church. (Church was organized on Sep 19, 1846. William Henry Gray erected original building on this site in 1850. He was a member of the Whitman Expedition.)
9. Trail **BENDS LEFT** up short hill to asphalt path. **LEFT** on asphalt to keep church on your left.
10. Follow asphalt as it **BENDS RIGHT** under HWY 101 (no sign. Church is behind you now.)
11. **CONTINUE** through tunnel and stay on asphalt as it **BENDS LEFT**.
12. **RIGHT** at "Y".
13. **RIGHT** onto gravel path into woods at end of asphalt. (3.5km)
14. **CROSS** Skipanon River.
15. **KEEP LEFT** to stay on gravel at big tree where dirt path branches right – NOTE No Trespassing sign.
16. 4km where trail crosses old logging road. Sign says Ft Clatsop 3mi hiker only. **TURNAROUND** here and return to parking area.
17. Stay on gravel path and off private property. **RE-CROSS** the Skipanon River.
18. Pass metal gate on your **LEFT** to asphalt path and go **LEFT** onto asphalt.
19. Go **STRAIGHT** to follow asphalt path as it **BENDS RIGHT** to tunnel under road (HWY 101 – no sign.)
20. **LEFT** on asphalt (by bike rack) for a short distance. Part way up grade, take dirt path to **RIGHT** down hill and **RIGHT** passing "Day Use Only" sign.
21. Wooden log fence on your **LEFT** and Pioneer church & cemetery will be on your **RIGHT** as the trail **BENDS LEFT** going uphill. (6km)
22. **CROSS** floating bridge (look for beaver & ducks)
23. **CROSS** paved lane (not shown on map) to pick up trail on other side. Go through 3 cattle gates.
24. 8km at wooden truss bridge at Sunset/Neacoxie Lake (no sign.)
25. **CROSS** gravel road (not shown on map).
26. **EXIT** trail at parking lot (9km), turn **RIGHT** onto packed gravel and follow it to viewing deck trail. Turn **RIGHT** onto trail.
27. At end of 2nd wooden bridge, **BEAR RIGHT** to stay on gravel trail to observation platform.
28. Facing the ocean, **LOOK LEFT** (south). You can see Tillamook Head jutting into ocean.
29. **TURNAROUND** and **RETRACE STEPS** back to start/finish at parking lot. (10km)

We hope you've enjoyed this walk and will join us on our other routes from Astoria to Portland. Visit us at www.walking4fun.club.

Sunset Beach Option #2 of Fort Clatsop Walk



Start/Finish
w/restrooms

Turnaround
Point

The Sea Coast is about 7 miles distant Nearly West about 5 miles of the distance through a thick wood with reevens hills and Swamps the land, rich black moald [soil] 2 miles in an open waving Sandy prarie, ridge running parrelal to the river, Covered with Green Grass.

William Clark, December 10, 1805

Know before you go

Pets

For the comfort of all hikers please leash your pets and clean up after them. Free waste bags are available at the Fort Clatsop Visitor Center, Netul Landing, and Fort to Sea Trailhead.

Hours

Visitor Center
9am-6pm summer
9am-5pm winter

Sunset Beach
7am-9pm

All trails including Fort to Sea and Netul Landing trailheads are open dawn until dusk.

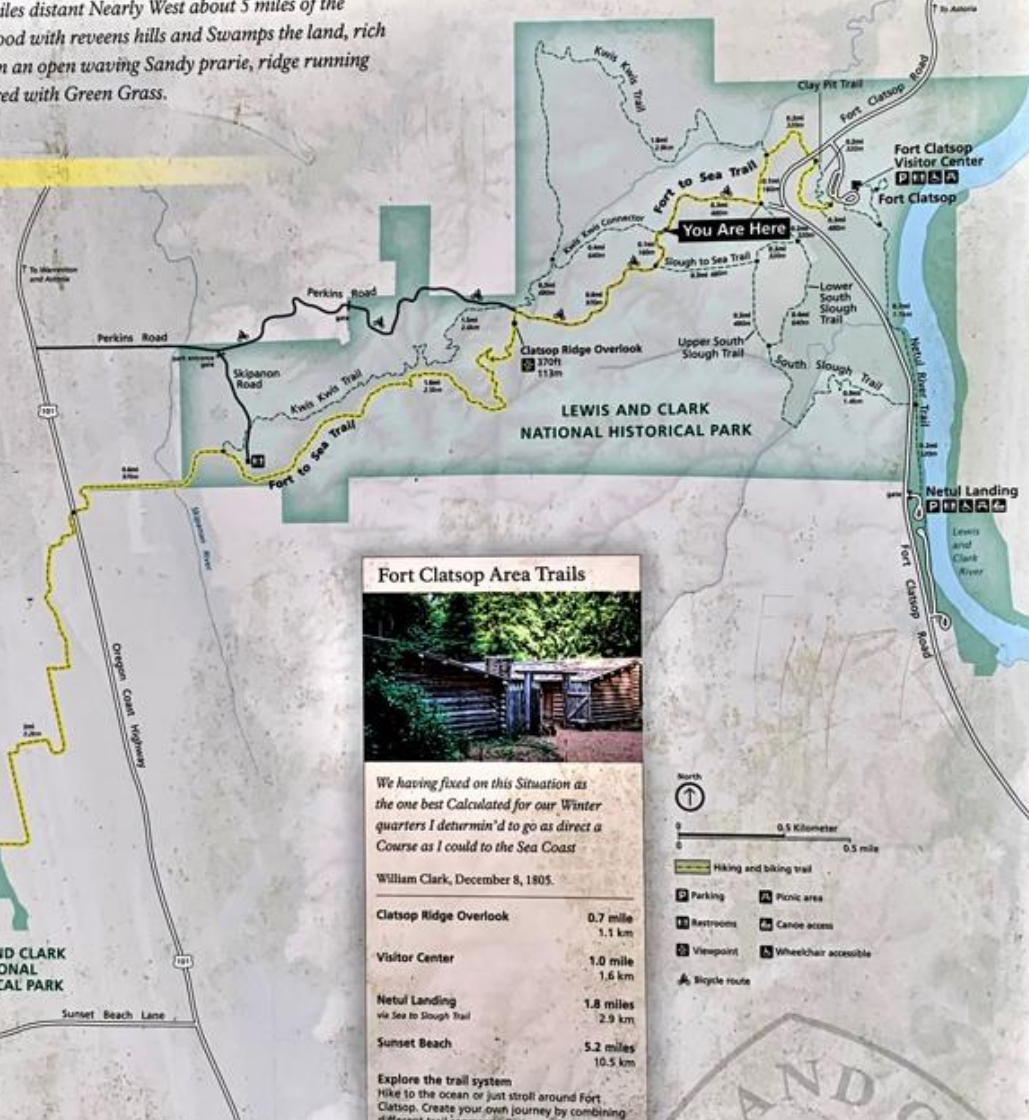
CALL 911
for emergencies

- No feeding or approaching wildlife
- No camping
- No biking on most trails see map for details

CAMP AREA
ARMED FORCES
TRAINING FACILITY

LEWIS AND CLARK
NATIONAL
HISTORICAL PARK

Sunset Beach
State Recreation
Area



Fort Clatsop Area Trails



We having fixed on this Situation as the one best Calculated for our Winter quarters I deturmin'd to go as direct a Course as I could to the Sea Coast

William Clark, December 8, 1805.

Clatsop Ridge Overlook	0.7 mile 1.1 km
Visitor Center	1.0 mile 1.6 km
Netul Landing via Sea to Slough trail	1.8 miles 2.9 km
Sunset Beach	5.2 miles 10.5 km

Explore the trail system
Hike to the ocean or just stroll around Fort Clatsop. Create your own journey by combining different trail segments. Distances for each segment are shown on the map.

Your leas fees are used to maintain the park trails



- Hiking and biking trail
- Parking
- Restrooms
- Viewpoint
- Picnic area
- Canoe access
- Wheelchair accessible
- Bicycle route

