

**Instruction for Los Poblanos
6/10/14km Walk, Rated 1A, Y1430
Double Eagle Hike and Bike Club**

Walk Start Location: Los Poblanos Fields Open Space parking lot on Tierra Viva PI NW in Albuquerque

GPS coordinates: 35.14251, -106.65975

Restrooms available at walk start point and Hartnett Park

Driving Directions: From I-25 take the Montgomery Blvd/Montano Rd (exit 228) and proceed west on Montano Rd for 2.9 miles, then turn right on Tierra Viva PI NW and the parking area is on the left.

Parking: Open Space lot in any free space.

More Information on the Los Poblanos Open Space can be found at this city Parks and Rec site:

<https://www.cabq.gov/parksandrecreation/parks/prescription-trails/87107/los-poblanos-open-space>

Other Albuquerque Open Space Maps can be found here:

<https://www.cabq.gov/parksandrecreation/open-space/facilities-map>

Walk Completion and Credit: Be sure to log back into the OSB system to finish/complete your online registration after doing the event. The OSB system does not deduct any event fee from a participant's Event Bank until they have submitted event completion info including the event was walked, the distance walked, and the selection of applicable special programs that person is participating in. (Nevertheless, a fee of \$2 for a downloaded PDF is deducted from the user's Event Bank when the PDF is downloaded. Later, any PDF fees are credited back to a user's Event Bank when he/she submits the event completion info as a paying for credit participant. Note, however, the \$2 coupon for the downloaded PDF will expire in 60 days.)

"Please use either the Online Start Box (OSB) or Physical Start Box (PSB) to register and complete the event. Do NOT mix and match, for example, by registering using the OSB then completing your event using the PSB nor signing the PSB log sheet. The sponsoring club only receives credit for an OSB participation when an OSB registration has been completed online by entering your participation date, distances, and any special programs using the OSB."

"These maps and directions may only be used in conjunction with a signed American Volkssport Association athletic waiver. All other uses are prohibited."

Walk owner is Stafford Maheu and he can be reached at 505-363-8318. For emergencies dial 911.

These walking directions and maps may only be used in conjunction with a signed American Volkssport Association athletic waiver. All other uses are prohibited. For emergencies contact 911. Walk owner is Stafford Maheu and he can be reached at 505-363-8318.



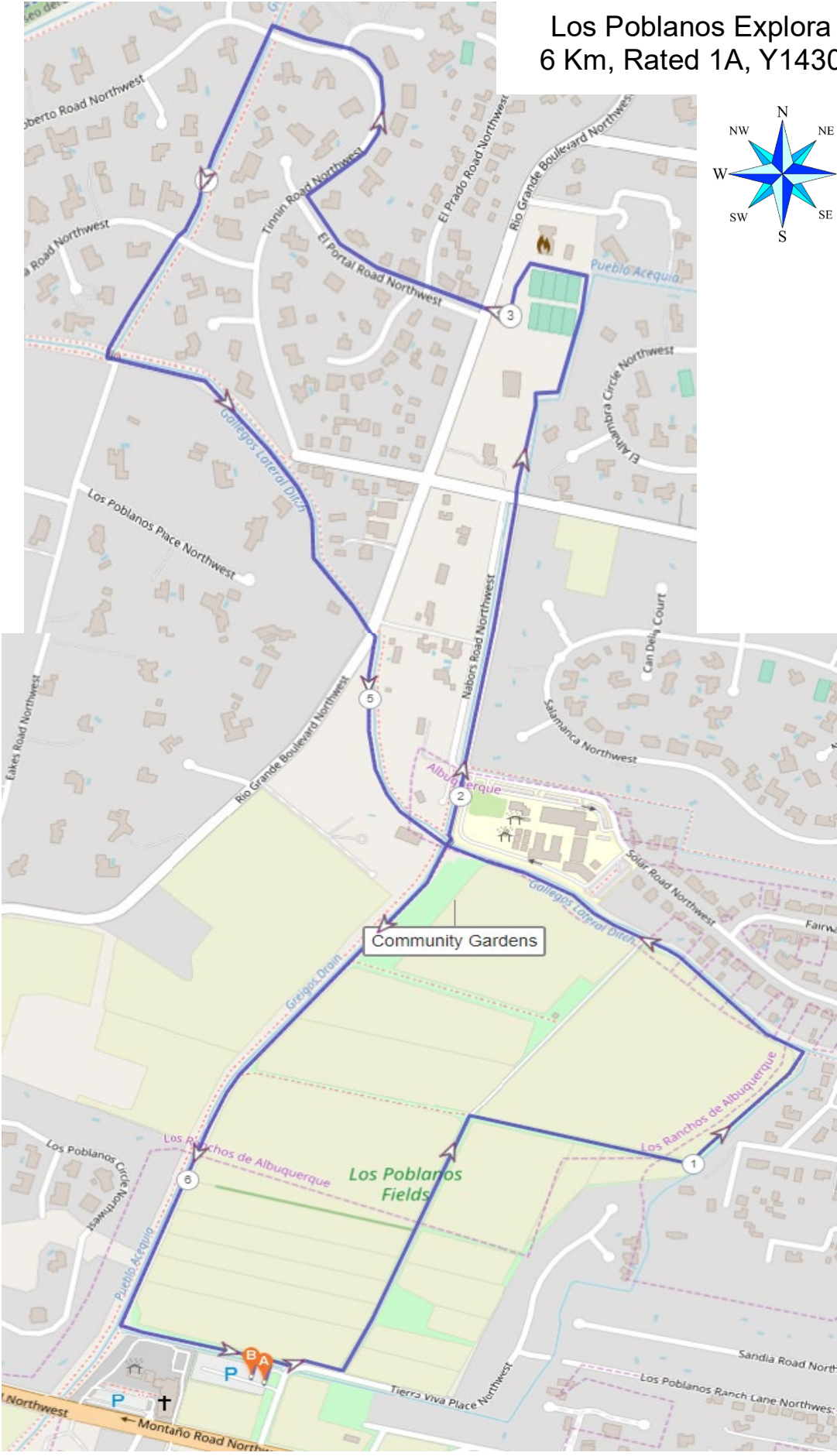
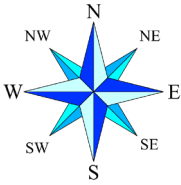
LOS POBLANOS EXPLORA WALK
Sponsored by Double Eagle Hike & Bike Club
6Km Rated 1A, Stamp #1430.



1. Depart the parking area by **CROSSING OVER** the irrigation canal to the Farm Access Trail.
2. **RIGHT** walking parallel to Tierra Viva until you reach a gravel/dirt road.
3. **LEFT** on the dirt road, entering Los Poblanos Fields Open Space. You will pass a gazebo and huge cottonwood tree on your **right**.
4. **RIGHT** on the next dirt road in the middle of the fields at the weathered wood bench and the sign about dogs.
5. **LEFT** at the irrigation canal (Hackman Lateral) at the edge of the field.
6. **LEFT** at the intersection of the next canal (Gallegos Lateral), walking on the **left** side of the canal.
7. **RIGHT** at Alvarado Elementary School, **CROSSING RIGHT** over the bridge. Walk through the parking area and ahead along the Griegos Drain. You will **CROSS** Solar Road and **PARALLEL** Nabor Rd to Chavez Rd.
8. **CROSS** Chavez Rd and **ENTER** Hartnett Park, following the paved path around the park past the tennis courts on your **left**.
9. **LEFT** at the end of the tennis courts.
10. **LEFT** into the parking lot. (There are **restrooms** in the building. On most Saturday mornings there is a quaint Farmer's Market in the parking lot.)
11. **CROSS** Rio Grande Blvd at the entrance to the parking lot; **CONTINUE STRAIGHT** ahead on El Portal.
12. **RIGHT** at the "T" intersection with Tinnin Rd.
13. After passing Bonito Suenos Ct, **LEFT** onto the **right** bank of the Griegos Drain (sign says entering private property; ignore.)
14. After crossing Francisca Rd (unmarked), you will come to a metal bridge crossing the lateral.
15. **CROSS** the lateral over the metal bridge and turn **LEFT**.
16. Walk to the next street (Rio Grande Blvd) **CROSS** carefully and continue along the **right** side of the canal.
17. At Alvarado Elementary School, turn **RIGHT** along Griegos Drain, passing the Community Garden on your **left**. Walk to the end of the fields.
18. **LEFT** at the end of the fields and walk back to the parking area, keeping the Shepherd of the Valley preschool to your **right**.

We hope you've enjoyed this walk and will join us on our other routes in the Albuquerque, Santa Fe, and Los Alamos areas.

Los Poblanos Explora 6 Km, Rated 1A, Y1430



These walking directions and maps may only be used in conjunction with a signed American Volkssport Association athletic waiver. All other uses are prohibited. For emergencies contact 911. Walk owner is Stafford Maheu and he can be reached at 505-363-8318.



LOS POBLANOS EXPLORA WALK
Sponsored by Double Eagle Hike & Bike Club
10K and 14K Rated 1A, Stamp #1430.



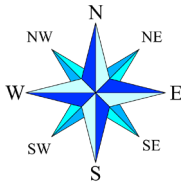
1. Depart the parking area by **CROSSING OVER** the irrigation canal to the Farm Access Trail.
 2. **RIGHT** walking parallel to Tierra Viva until you reach a gravel/dirt road.
 3. **LEFT** on the dirt road, entering Los Poblanos Fields Open Space. You will pass a gazebo and huge cottonwood tree on your **right**.
 4. **RIGHT** on the next dirt road in the middle of the fields at the weathered wood bench and the sign about dogs.
 5. **LEFT** at the irrigation canal (Hackman Lateral) at the edge of the field.
 6. **LEFT** at the intersection of the next canal (Gallegos Lateral), walking on the **left** side of the canal.
 7. **RIGHT** at Alvarado Elementary School, **CROSSING RIGHT** over the bridge. Walk through the parking area and ahead along the Griegos Drain. You will **CROSS** Solar Road and **PARALLEL** Nabor Rd to Chavez Rd.
 8. **CROSS** Chavez Rd and **ENTER** Hartnett Park, following the paved path around the park past the tennis courts on your **left**.
 9. **LEFT** at the end of the tennis courts.
 10. **LEFT** into the parking lot. (There are **restrooms** in the building. On most Saturday mornings there is a quaint Farmer's Market in the parking lot.)
 11. **CROSS** Rio Grande Blvd at the entrance to the parking lot; **CONTINUE STRAIGHT** ahead on El Portal.
 12. **RIGHT** at the "T" intersection with Tinnin Rd
 13. After passing Bonito Suenos Ct, **LEFT** onto the **right** bank of the Griegos Drain (sign says entering private property; ignore.)
 14. **RIGHT** following the lateral as it bends around to the **left** and **CROSS** Eakes Rd (unmarked but there is a plaque on the north side of the bridge.)
 15. You will **CROSS** another unmarked road. The next road is Rio Grande Pl.
 16. **RIGHT** on Rio Grande Pl. (no street sign.)
 17. At the corner where Rio Grande Pl meets Rio Grande Ct (no street sign), there is a walkway between lots to the trail along the Albuquerque Riverside Drain (walk **STRAIGHT** ahead as if Rio Grande Pl continued on the **right** side of the estate in front of you.)
 18. **LEFT** on the trail for about .75 mile to Montano Rd.
 19. **CROSS** underneath the road, then **RIGHT** over the drain carefully **CROSSING** the paved Paseo del Bosque Recreation Trail going uphill and **RIGHT** to the sidewalk alongside Montano Rd.
 20. **LEFT** on the sidewalk, **CROSSING** the Montano Bridge over the Rio Grande. (**You will share the trail with fast moving bikes, so be alert and stay to the right. NOTE: three informational kiosks along the bridge.**)
 21. After crossing the bridge, **LEFT** entering the tree sculpture garden and make a lap around the park, returning to Montano Rd.
- 10K OPTION (continue with steps 22-29)**
22. **RIGHT** on the sidewalk **CROSSING** over the river.
 23. On the far side of the river, **RETURN** to and **CROSS** the Paseo del Bosque Recreational Trail, watching carefully for bike traffic on your **left**.
 24. **CROSS** the Drain. Walk **STRAIGHT AHEAD** along either side of the canal.
 25. At the end of the canal is Rio Grande Blvd. Follow the path to the **RIGHT**, **CROSSING** Rio Grande Blvd at the crosswalk.
 26. **LEFT** to the bridge over Montano Blvd.
 27. **RIGHT** immediately after crossing the bridge, following the path down to Montano Rd.
 28. **LEFT** along Montano Rd until you reach the Shepherd of the Valley church and preschool.
 29. **LEFT** through the parking area and **RIGHT** along the preschool fence and back to the start point. You're done!

These walking directions and maps may only be used in conjunction with a signed American Volkssport Association athletic waiver. All other uses are prohibited. For emergencies contact 911. Walk owner is Stafford Maheu and he can be reached at 505-363-8318.

14K OPTION (Skip steps 22-29; Continue with steps 30-45)

30. The Open Space Visitor Center is the objective for this extra distance. It is open Tues-Sun, 9am to 5pm. They have **restrooms**, interesting displays of art, and historic data. **CAREFULLY CROSS** Montano Rd at the crosswalk. **Do not expect traffic to stop for you!**
31. **PROCEED** along the **right** canal bank for a little over a mile.
32. **EXIT LEFT** just past the 5 ¾ mile marker down to a vehicle bridge with yellow metal railings across the drain.
33. Bear **LEFT** on the trail, and then **RIGHT** walking along the Corrales Main Canal.
34. **CROSS** Robertson Lane (unmarked), continuing along the canal.
35. After a short distance, follow the arrow pointing along a rustic fence on your **right** to the Open Space Visitor Center. Pass **RIGHT** through the blue door to the Center. (NOTE: the door is locked when the Center is not open! Visiting hours are Tues-Sun, 9am to 5pm.)
36. After touring the Visitor Center, **RETRACE** your route along the Corrales Main Canal back to the Albuquerque Riverside Canal, returning to Montano Rd.
37. **CROSS** Montano Rd very carefully.
38. **LEFT** onto the sidewalk, walking **ACROSS** the bridge over the Rio Grande.
39. On the far side of the river, return to and **CROSS** the Paseo del Bosque Recreation Trail, watching carefully for bike traffic on your **left**.
40. **CROSS** the drain. Walk **STRAIGHT AHEAD** along either side of the canal.
41. At the end of the canal is Rio Grande Blvd. Follow the path to the **right CROSSING** Rio Grande Blvd at the crosswalk.
42. **LEFT** to the bridge over Montano Blvd.
43. **RIGHT** immediately after crossing the bridge, following the path down to Montano Rd.
44. **LEFT** along Montano Rd until you reach the Shepherd of the Valley church/preschool.
45. **LEFT** through the parking area and **RIGHT** along the preschool fence back to the start point. You're done!

We hope you've enjoyed this walk and will join us on our other routes in the Albuquerque, Santa Fe, and Los Alamos areas.



Los Poblanos Explora 10/14 Km, Rated 1A, Y1430

Open Space Visitor Center w/Restroom

Tree Sculpture Garden and 10km Turn Back



Los Poblanos Open Space

Enter the Open Space area from west bound Montano Boulevard. Suggested routes start at the parking area and go in a clockwise direction. Walk west to the Griegos Drain, turn right and follow the drain road. The Open Space can also be entered from Alvarado Elementary School in the Village of Los Ranchos.

LOOP 1

Trail Distance: 1 mile
Difficulty: Grade 3
Steps: 2110
Trail Surface: very wide natural farm roads, ditch banks

LOOP 2

Trail Distance: 1.5 mile
Difficulty: Grade 3
Steps: 3170
Trail Surface: very wide natural farm roads, ditch banks

LOOP 3

Trail Distance: 1.9 mile
Difficulty: Grade 3
Steps: 4010
Trail Surface: very wide natural farm roads, ditch banks

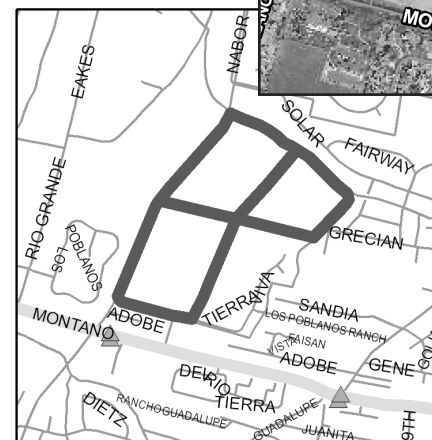
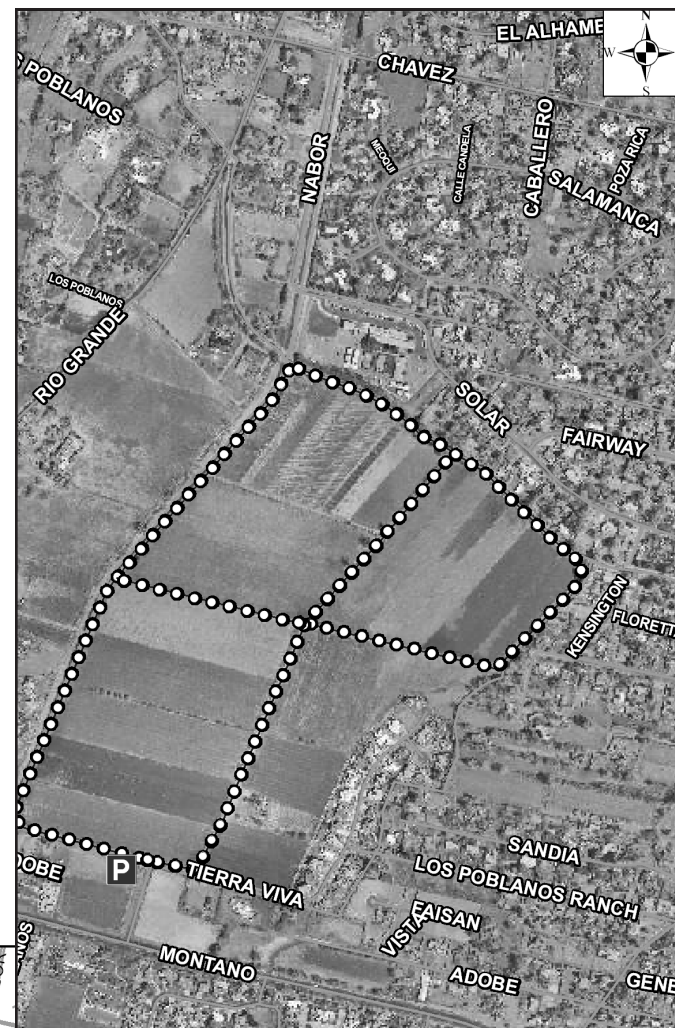
Attractions: wildlife habitat, active farming, lots of walkers, runners and bicyclists in the area

NEARBY MAJOR CROSS STREETS:
Montano & Rio Grande NW

ABQ RIDE:
none

PUBLIC FACILITIES:
none

PARKING:
on site



Los Poblanos Open Space

ZIP CODE
87107