



MISSION SAN JOSE TO MISSION SAN JUAN Y1614

San Antonio Pathfinders



Please use either the Online Start Box (OSB) or Physical Start Box (PSB) to register and complete the event. Do NOT mix and match, for example, by registering using the OSB then completing using the PSB, nor signing the PSB log sheet. The sponsoring club receives credit for an OSB participant when an OSB registration has been completed by entering the participation date, distance and any special programs using the OSB. This walk is composed of 11k and 5k routes. The route is rated 1A. The route is along the UNESCO World Heritage San Antonio Missions Trail. The 11k visits both missions. The 5k starts at Mission San Jose, walks along the river and returns to Mission San Jose. The visitor center is open 9am – 5pm except Thanksgiving, Christmas, and New Year's Day. Call 210-932-1001 for more information.

Walk Registration:

Please use the Online Start Box (OSB) to register and complete the event.

Walk Completion and Walk Credit:

Be sure to log back into the OSB system to finish and complete your online registration after doing the event. The OSB system does not deduct any event fee from a participant's Event Bank until they have submitted event completion information indicating the date of the event, the distance, and the selection of applicable special programs that person is participating in. (Nevertheless, a fee of \$2 for a downloaded PDF is deducted from the user's Event Bank when the PDF is downloaded. Later, any PDF fees are credited back to a user's Event Bank when he/she submits the event completion information as a paying for credit participant. Note, however, the \$2 coupon for the downloaded PDF will expire in 60 days.) Also note that an event registration expires after 30 days, but if your registrations lapses, you may re-register without cost.

Driving Directions to Start Point:

The start point for the event is 6701 San Jose Dr, San Antonio, TX 78214. (Mission Rd at Roosevelt Ave)

From downtown San Antonio drive south on Roosevelt Ave (536 Spur). After Pizza Hut on right, TURN LEFT at Napier and LEFT on San Jose Dr to the San Jose Mission Visitor Center parking lot.

There are restrooms located at both missions.

IN EMERGENCY: DIAL 911

**Event related assistance: Mike Schwencke 210-382-0367 or
mike.schwencke@outlook.com**

© Copyright San Antonio Pathfinders 2026



These walk directions and maps may only be used in conjunction with a signed American Volkssport Association athletic waiver. All other uses are prohibited.



MISSION SAN JOSE TO MISSION SAN JUAN 5K WALK – Y1614 San Antonio Pathfinders



1. Begin your walk by touring the Mission grounds. There is a chapel, an old grist mill, and monastery ruins. Bathrooms are available.
2. **Return** to the front of the Visitor's Center (there is also a film in the Visitors Center about the missions).
3. **Straight** from the lobby of the visitor's Center to the sidewalk in front.
4. **Right** slightly along the sidewalk past the rental bikes.
5. **Cross** San Jose Dr. to the Mission sign (on left) and continue straight ahead.
6. **Left** slightly onto Napier Ave.
7. **Cross** Padre Drive to the Hike and Bike Trail.
8. **Right** on the Hike and Bike Trail, going over two suspension footbridges, crossing under the S.E. Military Drive Bridge. The San Antonio River will remain on the left.
9. **TURN AROUND** at the Espada Dam Parking area/bicycle stand (at #7). **Return to start point at Mission San Jose. This means a 5.2k out and back route.**
10. Stay on the Hike and Bike Trail (with the river on the right) all the way back until it leaves the rivers and curls up and **left**.
11. **Cross** the two suspension footbridges.
12. Follow the path until you reach the stop sign and the pedestrian crossing.
13. Turn **Left** and cross Padre Drive at the Pedestrian crossing.
14. **Continue** on the right side of the road straight to the Start Point at Mission San Jose Visitor' Center. Restrooms available at the visitor's center.

Thank you for walking this trail. We hope you will walk our other three Mission walks.

© Copyright San Antonio Pathfinders 2026



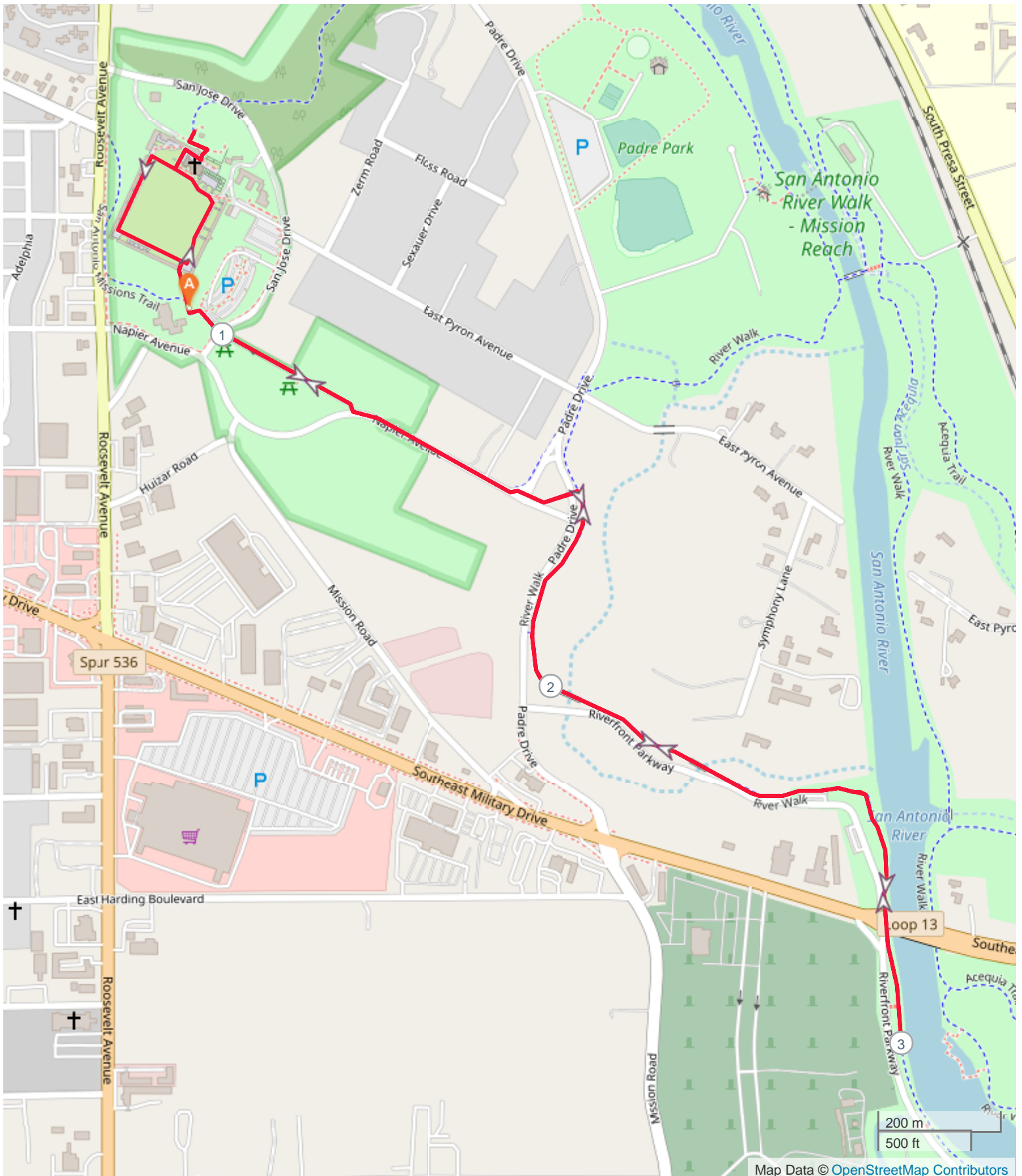
**AMERICA'S
WALKING CLUB**
— ESTABLISHED 1976 —

SANCTIONED EVENT
Eligible for credit towards IVV Achievement Awards



These walk directions and maps may only be used in conjunction with a signed American Volkssport Association athletic waiver. All other uses are prohibited.

Y1614 Mission San Jose To Mission San Juan 5k





MISSION SAN JOSE TO MISSION SAN JUAN 11K WALK – Y1614 San Antonio Pathfinders



1. Begin your walk by touring the Mission grounds. There is a chapel, an old grist mill, and monastery ruins. Bathrooms are available.
2. **Return** to the front of the Visitor's Center (there is also a film in the Visitors Center about the missions).
3. **Straight** from the lobby of the visitor's Center to the sidewalk in front.
4. **Right** slightly along the sidewalk past the rental bikes.
5. **Cross** San Jose Dr. to the Mission sign (on your left) and continue straight ahead.
6. **Left** slightly onto Napier Ave.
7. **Cross** Padre Drive to the Hike and Bike Trail.
8. **Right** on the Hike and Bike Trail, going over two suspension footbridges, crossing under the S.E. Military Drive Bridge. The San Antonio River will remain on your left.
9. At Mission Road there will be a sign for Mission San Juan. Leave the Hike and Bike Trail and turn **Left**, crossing the bridge over the San Antonio River.
10. Take the path and footbridge on your **Right** approaching the Mission grounds.
11. Turn **Right** to enter the Mission Grounds. Circle to your **Left**, noting the historic buildings on your left. Bathrooms are available.
12. After passing the bathroom, walk **Straight** through the two stone arches and enter the short Nature Trail.
13. After completing the Nature Trail, walk back through the stone arches and turn **Left**.
14. The Ranger station is on your **Left**.
CHECKPOINT: (Optional) If the ranger station is open, use their mission stamp on your start card. If it is closed, write down the number of bells that hang above the door of the chapel inside the mission walls.
15. Retrace your steps to Mission San Jose.
16. Turn **Left** on Mission Road, cross the two bridges and turn **Right** on the Hike and Bike Trail.
17. Stay on the Hike and Bike Trail (with the river on your right) all the way back till it leaves the rivers and curls up and **left**.
18. **Cross** the two suspension footbridges.
19. Follow the path until you reach the stop sign and the pedestrian crossing.
20. Turn **Left** and cross Padre Drive at the Pedestrian crossing.
21. **Continue** on the right side of the road straight to the Start Point at Mission San Jose Visitor' Center. Restrooms available.

Thank you for walking with us. We hope you will walk our other three Mission walks.

© Copyright San Antonio Pathfinders 2026



**AMERICA'S
WALKING CLUB**
— ESTABLISHED 1976 —

SANCTIONED EVENT
Eligible for credit towards IVV Achievement Awards



These walk directions and maps may only be used in conjunction with a signed American Volkssport Association athletic waiver. All other uses are prohibited.

Y1614 Mission San Jose To Mission San Juan 11k

