

# The Olympic Peninsula Explorers Volkssport Club Welcomes You to the Silverdale – Clear Creek Trail Walk

The walk is 5k and 10k. The 5k route (rated 1B) is exclusively on trails. The 10k route (Rated 2B) consists of sidewalks, road shoulders, boardwalks and trails. Additional information can be found at <https://www.clearcreektrail.org>.

Strollers: Yes, Wheelchairs: Yes (5k only), Pets: Yes, Restroom: Yes, Pass Required: No.

Located on the beautiful Kitsap Peninsula, the Clear Creek Trail follows Clear Creek as it meanders through riparian areas, wetlands, and remnant forests.

Both routes begin and end at the Silverdale Rotary Gateway Park located at 11601 Silverdale Way NW, Silverdale, WA 98383.

**Northbound WA 3:** Take exit 45A and head right on ramp for Kitsap Mall Blvd toward Silverdale. Turn right on Kitsap Mall Blvd, left on Randall Way, and left on Silverdale Way. The Park will be on your left.

**Southbound WA3:** Take Exit 45 toward WA-303S/NE Waaga Way S. Turn left on Ridgetop Blvd and take the ramp on the left side toward WA-303N. Take the ramp

for Silverdale Way and head toward Poulsbo. The Park will be on your left.

## **Walk Registration:**

Registration takes place online using the AVA Online Start Box, on <http://my.ava.org>. Follow the instructions provided to create a user account and sign the AVA waiver (one time). Instructions for payment are also included. Download the directions and print as needed. The POC does not provide event directions or accept alternate payment methods.

## **Walk Completion and Walk Credit:**

Once you have physically completed the walk, please login to your Online Start Box account click on the “My Start Box” tab, then the “Finish Table” tab, then click on “Go to Finish Table” button for the event you have completed. Use the displayed entry form to submit the date and distance of your walk as well as select applicable AVA Special Programs to generate stamped “virtual” insert cards that you may choose to print out.

## **Table of Contents:**

Use the following table to guide what portion of this document you may wish to print out.

<b>Section Contents</b>	<b>Pages</b>
Introduction, Walk Registration/Completion, and Table of Contents	1
Driving and Walk Directions	2-6
Maps	7-8

WELCOME TO OUR YEAR-ROUND VOLKSSPORT EVENT

**CLEAR CREEK TRAIL AT GATEWAY PARK**

**OLYMPIC PENINSULA EXPLORERS VOLKSSPORT CLUB**

**5km Rated 1B**

**YRE 1739**

**ESVA Challenges:** 39 Counties – Kitsap

**AVA Challenges:** 50 States/51 Capitals, Walk the USA A – Z, Anniversaries Hurrah

This walk begins and ends at the Silverdale Rotary Gateway Park located at 11601 Silverdale Way NW, Silverdale, WA 98383 (Skate Park, Walking Trails, Dog Park, Parking Lot and Restrooms)

1. Begin your walk by leaving Silverdale Rotary Gateway Park parking lot at the far-right side of the parking area, facing away from Silverdale Way. Pass between the three yellow metal posts and immediately turn **RIGHT** on the paved path.
2. Paved path will veer **RIGHT** onto a paved road. Walk on left side of road until you see a Kiosk (Wooden Trailhead Information Bulletin Board) on your left.
3. Turn **LEFT** onto dirt trail and walk to the first trail you come to on your left.
4. Turn **LEFT** and cross over a small bridge. Continue on trail to a paved path.
5. Turn **RIGHT** onto paved path. **(1K)**
6. Continue for awhile until you come to three yellow metal posts, which are located on the path. **(2K)** At these posts **TURNAROUND** and walk back on the same paved path.
7. Continue awhile until you see on the right side of the path two directional signs, "Silverdale Way" and "Trigger Ave".
8. This should be the first non-paved path on the left after the turnaround. Turn **LEFT** and immediately turn **LEFT** again onto gravel trail that runs parallel to paved path that you were just on. Continue to where the main trail veers to the right. **(3K)**
9. Veer **RIGHT** onto dirt path and walk towards 4 yellow metal posts located on the right side of the trail. Continue on trail to where the main trail veers left.
10. Veer **LEFT** and follow dirt trail and boardwalk for awhile to a "T" where several signs are on a wood post, located on your right. **(4K)**
11. Turn **RIGHT** and walk to the first trail you come to on your left.
12. Turn **LEFT** onto this trail that you were on once before.
13. Continue to a paved path and then turn **LEFT** onto paved path.
14. Continue on paved path for awhile. After passing by a covered picnic table on your left you will come to a "T". Turn **LEFT**.
15. Continue on paved path until you see the same three yellow metal posts you passed between when you started this walk located on right side of path.
16. Turn **RIGHT** and pass between the three yellow metal posts, which brings you back to Silverdale Rotary Gateway Park parking lot.

In case of emergency: Dial 9-1-1 - Event related assistance: Kim Paulson 206-780-1344

©2026 Olympic Peninsula Explorers – All Rights Reserved

These directions and maps may only be used in conjunction with a signed American Volkssport Association athletic waiver. All other uses prohibited.

Last Updated: 1/2026

WELCOME TO OUR YEAR-ROUND VOLKSSPORT EVENT

**CLEAR CREEK TRAIL AT GATEWAY PARK**

**OLYMPIC PENINSULA EXPLORERS VOLKSSPORT CLUB**

**5km Rated 1B**

**YRE 1739**

**ESVA Challenges:** 39 Counties – Kitsap

**AVA Challenges:** 50 States/51 Capitals, Walk the USA A – Z, Anniversaries Hurrah

Be sure to log back into the OSB system ([my.ava.org](http://my.ava.org)) to “finish/complete” your online registration after doing the walk if that is how you registered. The OSB system does not deduct any walking fee from a walker’s Event Bank until they have submitted walk completion info including the date the event was walked, the distance walked, and the selection of applicable special programs that walker is participating in. (Nevertheless, a fee of \$2 for a downloaded pdf is deducted from the user’s Event Bank when the pdf is downloaded. Later, any pdf fees are credited back to a walker’s Event Bank when he/she submits the walk completion info as a paying for credit walker.) Note however that the \$2 “coupon” for the downloaded PDF expires in 60 days.

In case of emergency: Dial 9-1-1 - Event related assistance: Kim Paulson 206-780-1344

©2026 Olympic Peninsula Explorers – All Rights Reserved

These directions and maps may only be used in conjunction with a signed American Volkssport Association athletic waiver. All other uses prohibited.

Last Updated: 1/2026

WELCOME TO OUR YEAR-ROUND VOLKSSPORT EVENT

**CLEAR CREEK TRAIL**

OLYMPIC PENINSULA EXPLORERS VOLKSSPORT CLUB  
10km Rated 2B YRE 1739

ESVA Challenges: 39 Counties - Kitsap, Strolling Along the River (Clear Creek)  
AVA Challenges: 50 States/51 Capitals, Walk the US A – Z, Anniversaries Hurrah

This walk begins and ends at the Silverdale Rotary Gateway Park located at 11601 Silverdale Way NW, Silverdale, WA 98383 (Skate Park, Walking Trails, Dog Park, Parking Lot, and Restrooms)

1. Begin your walk by leaving Silverdale Rotary Gateway Park parking lot at the far-right side of the parking area, facing away from Silverdale Way. Pass between the three yellow metal posts and immediately turn **RIGHT** on paved path.
2. Paved path will veer **RIGHT** onto a paved road. Walk on left side of road until you see a Kiosk (Wooden Trailhead Information Bulletin Board) on your left.
3. Turn **LEFT** onto dirt trail and walk to the first trail you come to on your left.
4. Turn **LEFT** and cross over small bridge. Continue on trail to a paved path.
5. Turn **RIGHT** onto paved path. **(1K)**
6. Continue for awhile until you come to three yellow metal posts, which are located on the path. **(2K)**. At these posts **TURNAROUND** and walk back on the same paved path.
7. Continue awhile until you see on the right side of the path two directional signs, "Silverdale Way" and "Trigger Ave".
8. This should be the first non-paved path on the left after the turnaround. Turn **LEFT** and immediately turn **LEFT** again onto gravel trail that runs parallel to paved path that you were just on. Continue to where the main trail veers to the right. **(3K)**
9. Veer **RIGHT** onto dirt path and walk towards 4 yellow metal posts located on the right side of the trail. Continue on trail to where the main trail veers left.
10. Veer **LEFT** and follow dirt trail and boardwalk for awhile to a "T" where several signs are on a wood post, located on your right. **(4K)**
11. Turn **RIGHT** and walk to the first trail you come to on your left.
12. Turn **LEFT** onto this trail that you were on once before.
13. Continue to a paved path and then turn **LEFT** onto paved path.
14. Continue on paved path for awhile. After passing by a covered picnic table on your left you will come to a "T". Turn **RIGHT** and continue over bridge and follow paved path to Silverdale Way. **(5K)**
15. **Cross** Silverdale Way at traffic light at crosswalk.
16. Continue straight on paved path. **Cross** over bridge and then veer **RIGHT** and continue until you come to gravel/dirt path at a yellow metal gate. Go around gate, if closed, and continue on main path for awhile. **(6K)**

In case of emergency: Dial 9-1-1 - Event related assistance: Kim Paulson: 206-780-1344

©2026 Olympic Peninsula Explorers – All Rights Reserved

These directions and maps may only be used in conjunction with a signed American Volkssport Association athletic waiver. All other uses prohibited.

Last Updated: 01/2026

WELCOME TO OUR YEAR-ROUND VOLKSSPORT EVENT

**CLEAR CREEK TRAIL**

OLYMPIC PENINSULA EXPLORERS VOLKSSPORT CLUB  
10km Rated 2B YRE 1739

ESVA Challenges: 39 Counties - Kitsap, Strolling Along the River (Clear Creek)

AVA Challenges: 50 States/51 Capitals, Walk the US A – Z, Anniversaries Hurrah

17. When you come to another yellow metal gate, go around gate on your right, if closed, and continue on paved road and then sidewalk on your right to traffic light at Ridgetop Blvd.
18. Turn **RIGHT** at Ridgetop Blvd on sidewalk.
19. Continue through two traffic lights using crosswalks. Immediately, after second traffic light walk onto dirt path which will be straight ahead and then turn **RIGHT** at next trail at a Kiosk (Wooden Trailhead Information Board).
20. At next trail intersection turn **RIGHT** onto wood chip path. **(7K)**
21. Continue on main trail keeping to your right at all times. St. Michaels Medical Center will be on left side of trail. After passing a picnic table veer **RIGHT** on trail.
22. Continue on main trail staying to your left keeping parking lot on your left.
23. Immediately after stepping onto a boardwalk turn **LEFT** and continue on boardwalk/trail to Myhre Rd. **(8K)**
24. Turn **RIGHT** on Myhre Rd (unmarked) on sidewalk.
25. Continue on sidewalk to first parking lot entrance on your right. Turn **RIGHT** at parking lot entrance and then immediately turn **RIGHT** onto Clear Creek Trail.
26. Continue on trail until you come to a bridge. Before the bridge there are two trails to your left. Do not take the far left trail. Turn **LEFT** before this bridge.
27. Continue on trail to Silverdale Way. Turn **RIGHT** on sidewalk and continue on sidewalk to first trail on your right "Clear Creek Trail". Turn **RIGHT** onto boardwalk.
28. Continue on boardwalk to first trail intersection you come to and then turn **LEFT** on trail.
29. Continue on trail for a short distance and then turn **LEFT** onto boardwalk at the sign "North Valley".
30. Continue on boardwalk to Silverdale Way. **(9K)** Turn **RIGHT** on sidewalk and continue to first traffic light.
31. Turn **LEFT** at traffic light and **cross** Silverdale Way at crosswalk and then immediately turn **RIGHT** and **cross** driveway entrance to Home Depot at crosswalk.
32. Carefully, continue on road shoulder of Silverdale Way to first traffic light. Turn **LEFT** at traffic light onto paved path "Clear Creek Trail".
33. Continue **straight** on paved path until you see the same three yellow metal posts you passed between when you started this walk located on right side of path.

In case of emergency: Dial 9-1-1 - Event related assistance: Kim Paulson: 206-780-1344

©2026 Olympic Peninsula Explorers – All Rights Reserved

These directions and maps may only be used in conjunction with a signed American Volkssport Association athletic waiver. All other uses prohibited.

Last Updated: 01/2026

WELCOME TO OUR YEAR-ROUND VOLKSSPORT EVENT

**CLEAR CREEK TRAIL**

OLYMPIC PENINSULA EXPLORERS VOLKSSPORT CLUB  
10km Rated 2B YRE 1739

ESVA Challenges: 39 Counties - Kitsap, Strolling Along the River (Clear Creek)  
AVA Challenges: 50 States/51 Capitals, Walk the US A – Z, Anniversaries Hurrah

34. Turn **RIGHT** and pass between the three yellow metal posts, which brings you back to Silverdale Rotary Gateway Park parking lot.

Be sure to log back into the OSB system ([my.ava.org](http://my.ava.org)) to “finish/complete” your online registration after doing the walk if that is how you registered. The OSB system does not deduct any walking fee from a walker’s Event Bank until they have submitted walk completion info including the date the event was walked, the distance walked, and the selection of applicable special programs that walker is participating in. (Nevertheless, a fee of \$2 for a downloaded pdf is deducted from the user’s Event Bank when the pdf is downloaded. Later, any pdf fees are credited back to a walker’s Event Bank when he/she submits the walk completion info as a paying for credit walker.) Note however that the \$2 “coupon” for the downloaded PDF expires in 60 days.

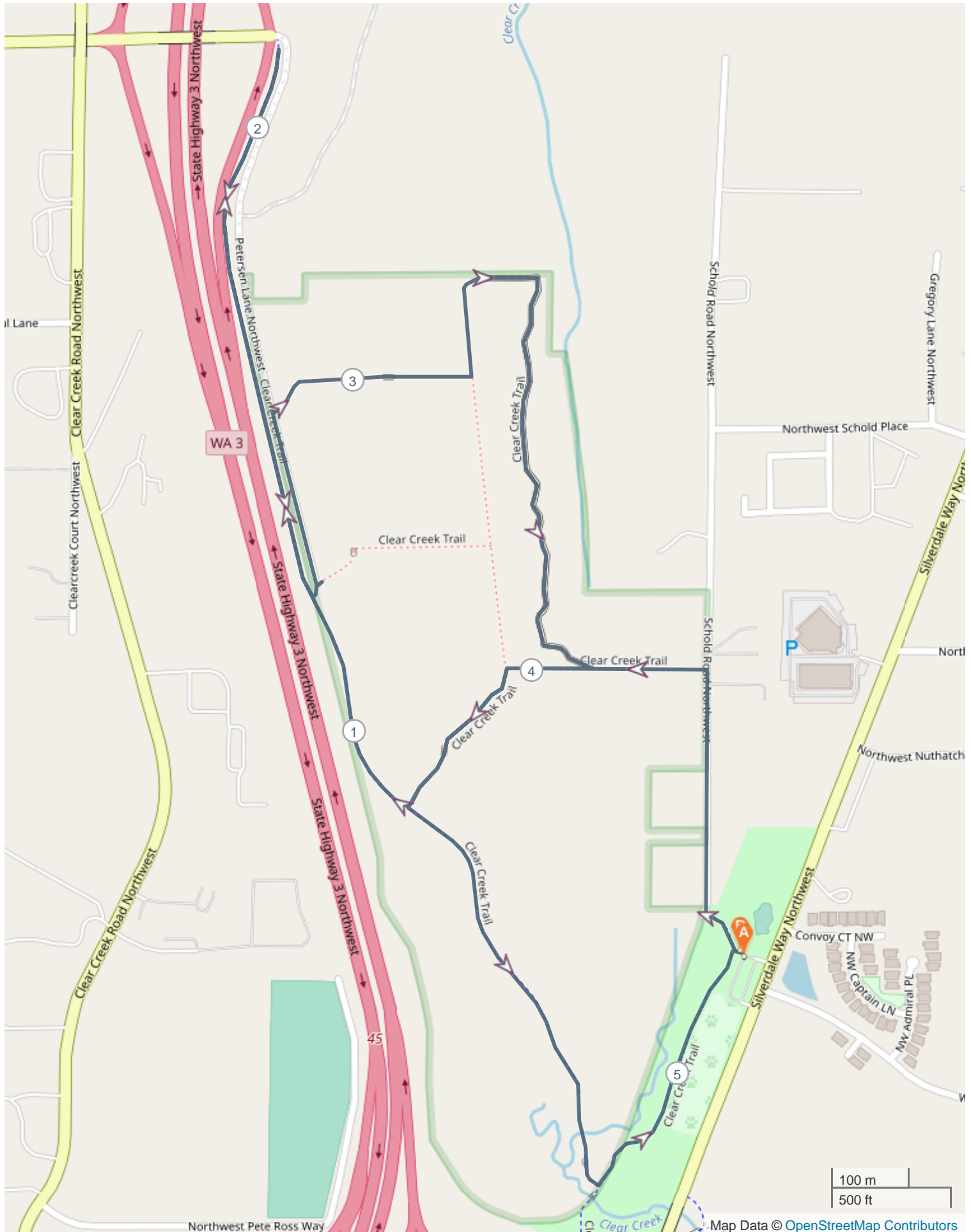
In case of emergency: Dial 9-1-1 - Event related assistance: Kim Paulson: 206-780-1344

©2026 Olympic Peninsula Explorers – All Rights Reserved

These directions and maps may only be used in conjunction with a signed American Volkssport Association athletic waiver. All other uses prohibited.

Last Updated: 01/2026

# Clear Creek Trail At Silverdale Gateway Park 5K



# Clear Creek 10K

