

KLAMATH FALLS – City of Sunshine – YR 1834

These walking directions and maps may only be used in conjunction with a signed American Volkssport Association athletic waiver. All other uses are prohibited. For emergencies contact 911. Walk owner is Dan Webster and he can be reached at 971-221-4994.

INTRODUCTION

Thank you for participating in this Oregon Trail State Volkssport Association event. Our goal is to make this a memorable walk for you. If there are any improvements or suggestions you have, please send them to the POC email. We do ask that if any unforeseen construction or obstacles are encountered during the walk that you also contact us so we can update the materials. If there are any new challenge sightings or if a listed challenge is no longer present, please contact us so we can update the listing information for all future walkers.

DRIVING DIRECTIONS

Address Veterans Memorial Park, 10 George Nurse Way, Klamath Falls, OR 97601

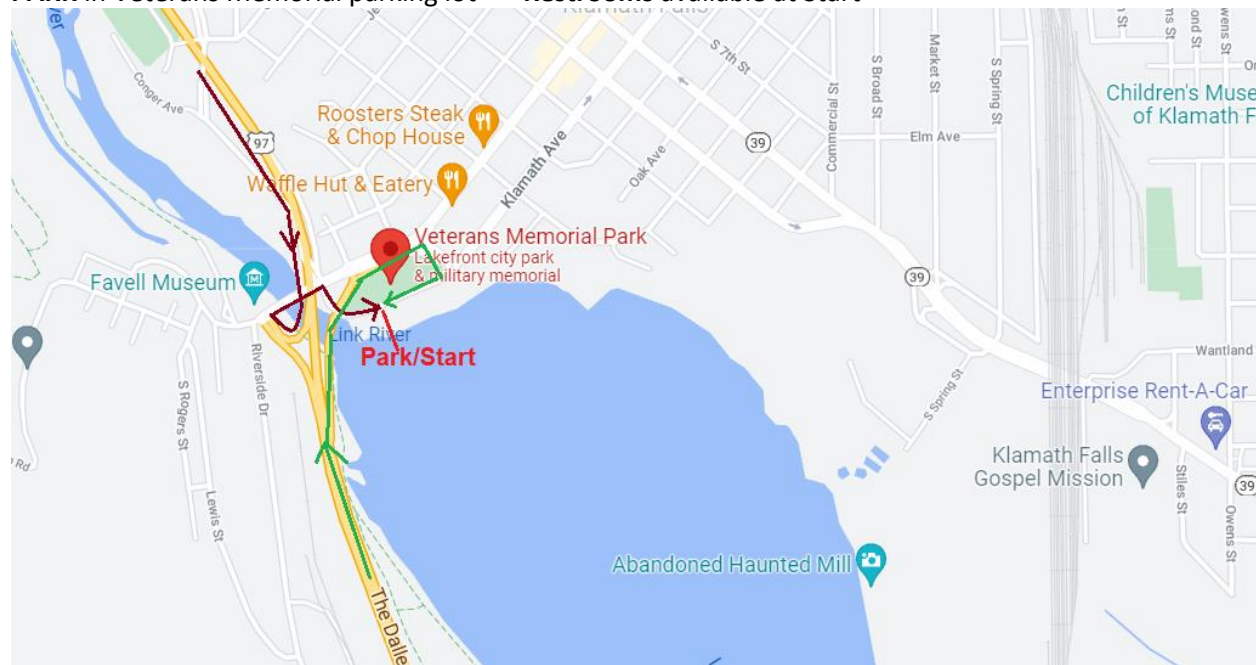
GPS 42.22486, -121.78168 **PLUS CODE:** 6696+WV Klamath Falls, Oregon

DESCRIPTION

Southbound US-97 to Klamath Falls. Take Business North US-97 to West Main St. Exit. RIGHT on W Main St. to an immediate RIGHT (no street sign) down to Veterans Memorial Park.

Northbound US-97 (The Dalles-California Hwy). Take the Klamath Falls City Center exit to US-97. Stay RIGHT to W. Main. Immediate RIGHT on first street you come to (no street sign) to Veterans Memorial Park.

PARK in Veterans Memorial parking lot **Restrooms** available at Start



Walk Completion and Credit: Be sure to log back into the OSB system to finish/complete your online registration after doing the event. The OSB system does not deduct any event fee from a participant's Event Bank until they have submitted event completion info including when the event was walked, the distance walked, and the selection of applicable special programs that person is participating in. (Nevertheless, a fee of \$2 for a downloaded PDF is deducted from the user's Event Bank when the PDF is downloaded. Later, any PDF fees are credited back to a user's Event Bank when he/she submits the event completion info as a paying for credit participant. Note, however, the \$2 coupon for the downloaded PDF will expire in 60 days.)

KLAMATH FALLS – City of Sunshine and Sun Stones

YR 1834 – 10k – 1A

These walking directions and maps may only be used in conjunction with a signed American Volkssport Association athletic waiver. All other uses are prohibited. For emergencies contact 911. Walk owner is Dan Webster and he can be reached at 971-221-4994.

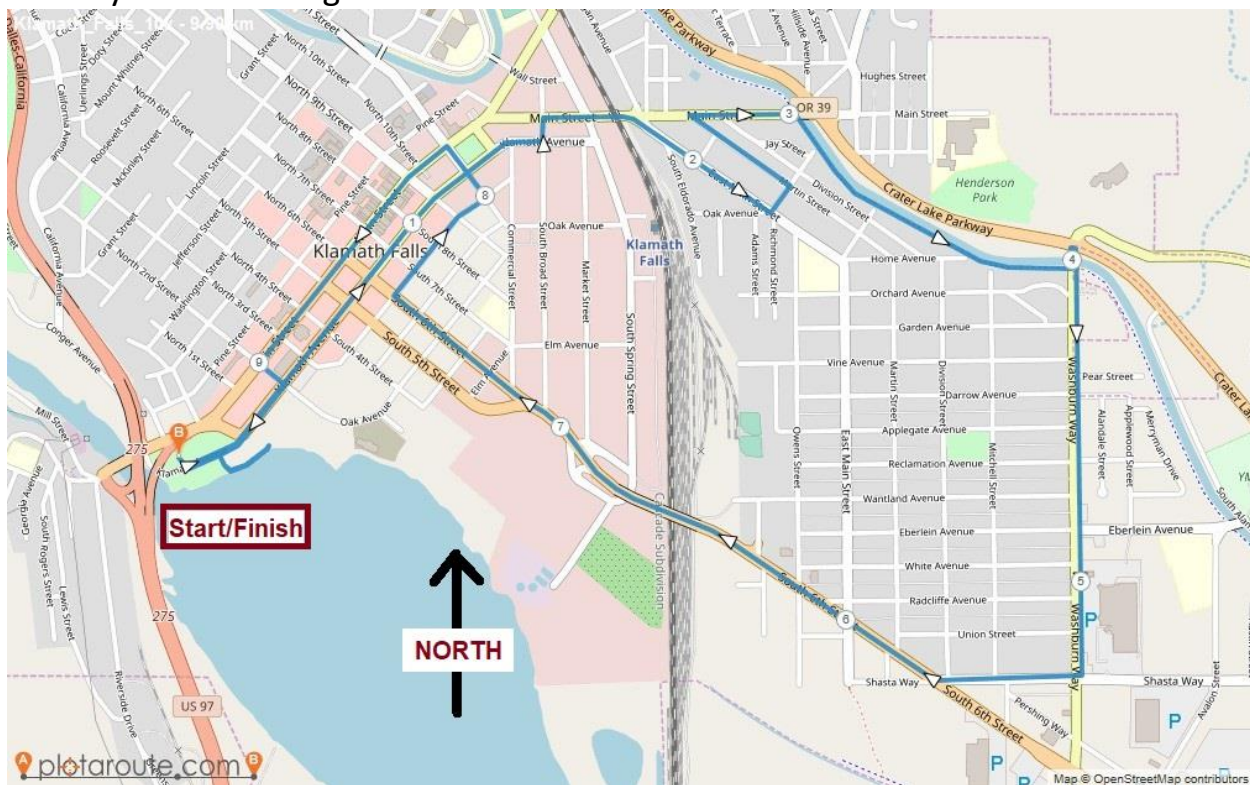
1. **From** Parking Lot as you face Veterans Park Restrooms with Lake Ewauna at your back, you are on George Nurse Way.
2. Turn **RIGHT** to the end of the parking lot and keep the Southern Pacific steam engine on your left, walk on the right sidewalk. The street name will change to Klamath Ave. (1k at 8th St)
3. **LEFT** on S. Broad St. to Main St.
4. **RIGHT** on Main St. just after walking under the RR tracks, the street curves to the right. You're still on Main St. to Oak Ave. (Museum is Klamath Falls Armory Auditorium at 1451 Main St., on National Registry).
5. **RIGHT** on Oak Ave. to Martin St. (2k)
6. **LEFT** on Martin to Main St.
7. **RIGHT** on Main St. to paved path
8. **RIGHT** on paved path just before the water canal #2 to Washburn Way
9. **RIGHT** at the stop sign on Washburn Way to Orchard Ave.
10. **LEFT** on Orchard Ave. to Cross Washburn Way then **RIGHT** so you're walking on the left side of Washburn Way to Shasta Way (4k)
11. **RIGHT** on Shasta Way to S. 6th St.
12. **RIGHT** on S. 6th St. to Walnut Ave. (up and over tracks) (6k)
13. **RIGHT** on Walnut Ave. to S. 11th St.
14. **LEFT** on S. 11th St. to S. Main St. (3k)
15. **LEFT** on S. Main St. to S. 2nd St.
16. **LEFT** on S. 2nd St. to Klamath Ave. (4k)
17. **CROSS** then **RIGHT** on Klamath Ave., passing the Southern Pacific steam engine on your right, to a paved path.
18. **LEFT** on the first paved path to Lake Ewauna (watch for pelicans and other water fowl)
19. **LEFT** at the Lake to the Wooden Bridge and **then return** to Veterans Memorial parking lot.
20. **LEFT** in the Veterans Memorial parking lot to restrooms and **FINISH**



KLAMATH FALLS – City of Sunshine and Sun Stones

YR 1834 – 10k – 1A

Thank you for walking this OTSVA Year-Round



Text © 2021 Oregon Trail State Volkssport Association

www.walkoregon.org



EMERGENCY: 911
NON-EMERGENCY:
POINT OF CONTACT: Dan Webster 971-221-4994

KLAMATH FALLS – City of Sunshine and Sun Stones

YR 1834 – 5k – 1A

These walking directions and maps may only be used in conjunction with a signed American Volkssport Association athletic waiver. All other uses are prohibited. For emergencies contact 911. Walk owner is Dan Webster and he can be reached at 971-221-4994.

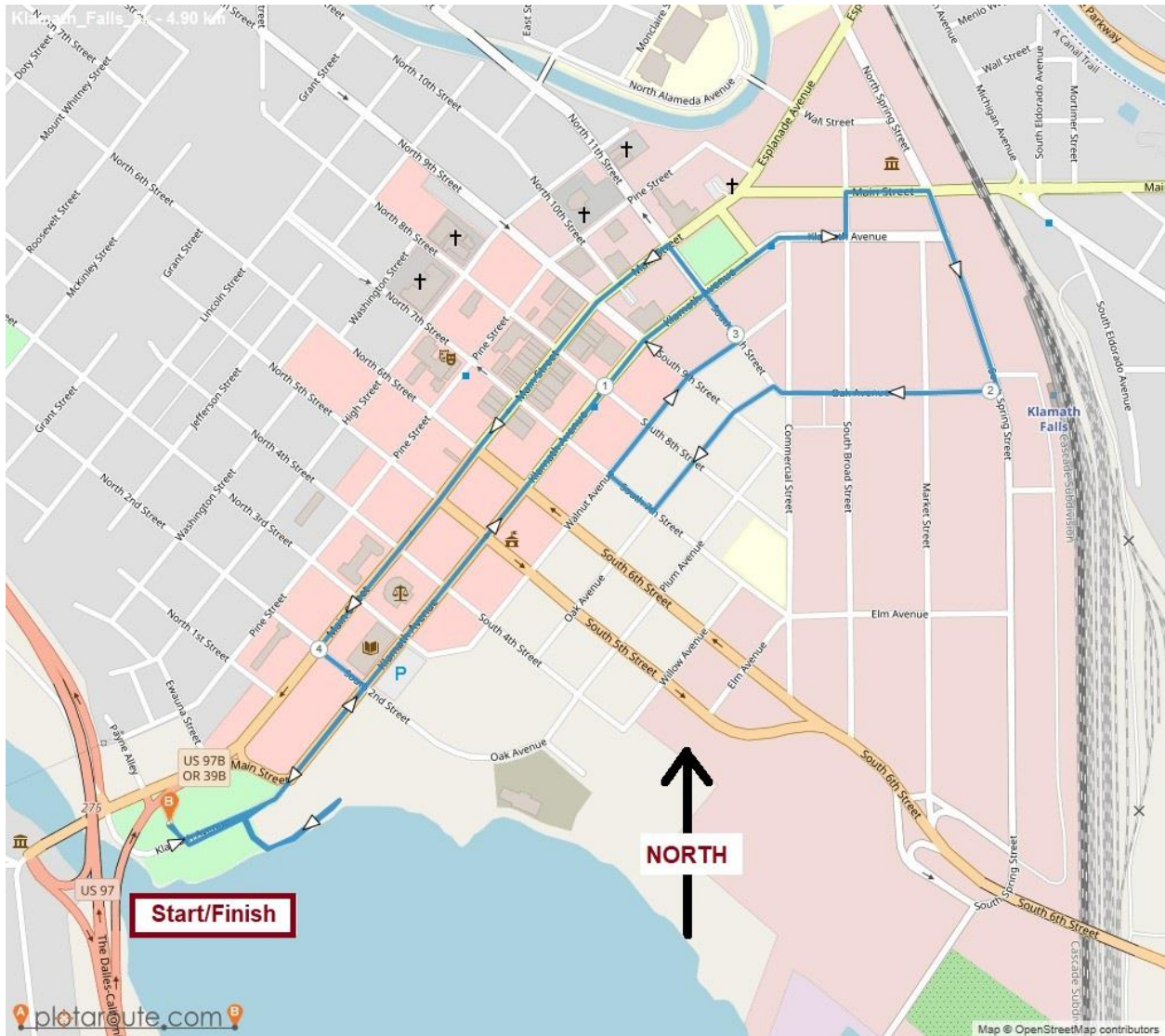
1. **From** Parking Lot as you face Veterans Park Restrooms with Lake Ewauna at your back, you are on George Nurse Way.
2. Turn **RIGHT** to the end of the parking lot and keep the Southern Pacific steam engine on your left, walk on the right sidewalk. The street name will change to Klamath Ave. (1k at 8th St)
3. **LEFT** on S. Broad St. to Main St.
4. **RIGHT** on Main St. to S. Spring St. (Klamath County Museum is old Klamath Falls Armory Auditorium at 1451 Main St., on National Registry).
5. **RIGHT** on S. Spring St. to Oak Ave.
6. **RIGHT** on Oak Ave. to intersection with Commercial St. and S. 11th St.
7. **CONTINUE** on Oak Ave. (veering **LEFT**) to SE 7th St. (2k)
8. **RIGHT** on SE 7th St. to Walnut Ave.
OPTION: for Eagle Ridge High School, go **Left** on 7th St to Willow Ave. **Right** on 6th. **Right** on Plum Ave. **LEFT** on 7th Ave.
9. **RIGHT** on Walnut Ave. to S. 11th St.
10. **LEFT** on S. 11th St. to S. Main St. (3k)
11. **LEFT** on S. Main St. to S. 2nd St.
12. **LEFT** on S. 2nd St. to Klamath Ave. (4k)
13. **CROSS** then **RIGHT** on Klamath Ave., passing the Southern Pacific steam engine on your right, to a paved path.
14. **LEFT** on the first paved path to Lake Ewauna (watch for pelicans and other water fowl)
15. **LEFT** at the Lake to the Wooden Bridge and **then return** to Veterans Memorial parking lot.
16. **LEFT** in the Veterans Memorial parking lot to restrooms and **FINISH**

Thank you for walking this OTSVA Year-Round.



KLAMATH FALLS – City of Sunshine and Sun Stones

YR 1834 – 5k – 1A



Text © 2021 Oregon Trail State Volkssport Association

www.walkoregon.org



EMERGENCY: 911
NON-EMERGENCY:
POINT OF CONTACT: Dan Webster 971-221-4994