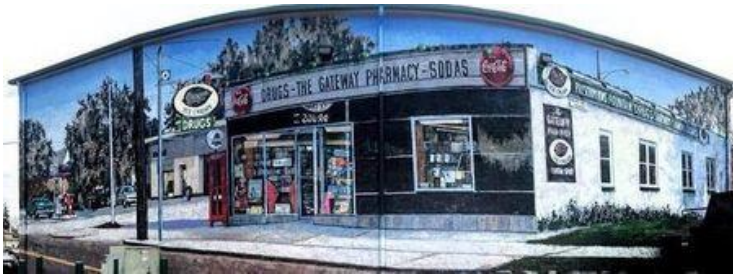


**Chester County Red Rovers  
Year-Round Walk – Online Start Box  
Phoenixville ~ Rising from the Ashes  
Y1839 – 6K & 10K – Rated 2B**



**Table of Contents**

<b>1. Driving Directions to Start</b>	<b>page 2</b>
<b>2. Walk Completion &amp; Credit Information</b>	<b>page 2</b>
<b>3. 5k Walk Directions</b>	<b>page 3 ~ 4</b>
<b>4. 5k Map</b>	<b>page 5</b>
<b>5. 10k Walk Directions</b>	<b>page 6 ~ 8</b>
<b>6. 10k Map</b>	<b>page 9</b>
<b>7. Supplemental Information</b>	<b>page 10</b>
<b>8. Special Programs</b>	<b>page 11 ~ 12</b>

## **Driving Directions**

- The Start Point is located at the Steel City Coffeehouse.
- The street address is 203 Bridge Street, Phoenixville, PA 19460 – 484-924-8425.
- GPS Coordinates ~ 40.1343576000278, -75.51651479976569
- Parking can be an issue. There are parking lots behind Steel City Coffeehouse, at the corner of Bridge and Main, and at the Borough Building (351 Bridge Street)

## **Walk Completion & Credit Information**

- Be sure to log back into the OSB system to finish/complete your online registration after walking the event.
- The OSB system does not deduct any event fee from a participant's Event Bank until he/she has submitted event completion information including the date the event was walked, the distance walked, and the selection of applicable Special Programs in which the walker is participating.
- Nevertheless, a fee of \$2 for a downloaded PDF is deducted from the walker's Event Bank when the PDF is downloaded.
- Later, any PDF fees are credited back to the walker's Event Bank when he/she submits the even completion information as a paying-for-credit participant.
- However, the \$2 coupon for the downloaded PDF will expire in 60 days.

# Chester County Red Rovers

## Phoenixville – Rising from the Ashes

### 6K ~ Y1839 ~ Rated: 2B

These walk directions and maps may only be used in conjunction with a signed American Volkssport Association athletic waiver. All other uses are prohibited.

Originally called Manavon, Phoenixville was settled in 1732 and incorporated in 1849. In its industrial heyday, early in the twentieth century, it was an important manufacturing center and the site of great manufacturing mills such as the Phoenix Iron Works, a boiler works, a silk mill, underwear and hosiery factories, a match factory, and the producer of the famous (and now highly collectible) Etruscan majolica pottery. These mills have long since closed, and the town has changed over the decades but has retained its heart of steel. The Borough is now home to numerous events like the Dogwood Festival, Blobfest, food festivals, and a Farmer's Market. Phoenixville has certainly risen from the ashes of its humble and hardworking roots to become the Borough it is today.

**Start Point:** Steel City Coffeehouse - 203 Bridge St, Phoenixville, PA 19460

**Special Programs:** Par for the Course, Step to the Beat, Walk with America's Veterans

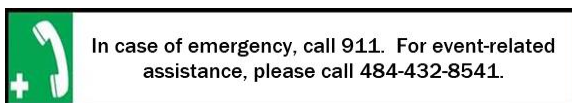
#### Directions:

1. Exit the Steel City Coffeehouse and turn RIGHT on Bridge Street and walk to the traffic light. *You will pass The Colonial Theatre on the right. The Colonial, which opened in 1903 as a vaudeville theatre and opera house, is the centerpiece of Phoenixville's recent renaissance. You can catch a free tour at 12:30 pm on the first and third Sundays if you make a reservation by 5:00 on the Thursday prior.*
2. Walk to the traffic light and turn LEFT on Gay Street.
3. Walk up Gay Street, passing the Phoenixville Post Office on your right and the old Gay Street School on your left. *(As you walk up Gay Street, glance down Morgan Street to the right to see the brick mills that were the home of the Byrne Knitting Mills – makers of underwear and shoelaces.)*
4. CROSS and LEFT on Second Avenue to Main Street. As you approach Main Street:
  - a. *The Phoenixville Library (the only Carnegie Library in Chester County) will be on the far-left corner. If you have time, stop in to see the beautiful reading room. (Public restrooms)*
  - b. *The entrance to Reeves Park will be on the far-right corner – the park features a bandshell, a chess garden, a veterans' monument, a memorial to David Reeves (president of the Phoenix Iron Company from 1855 to 1871), a Griffen Gun, several veterans memorials, and an All-Ability Playground.*
  - c. *The beautiful stone building on the near-right corner was originally the Byrne Mansion.*
5. RIGHT on Main Street. *At the corner of Main and Third, the Saint Ann Church (on the far-right corner) was a gift to the community from the Byrne Family, and the gorgeous Victorian on the near right corner was "Doc's House" in The Blob.*

6. LEFT on Third Avenue to Starr Street. *Shortly before Bridge, you'll pass a yellow mansion, on the right, that was one of the homes in Phoenix Park, the estate of David Reeves. Built from 1850-1874, it is one of the many buildings on the estate, which extended to the Schuylkill. A larger mansion stood on the sight of Holy Ghost Orthodox Church.*
7. LEFT on Starr Street to Bridge Street.
  - a. *Shortly before Bridge, you'll pass a yellow mansion, on the right, that was one of the homes in Phoenix Park, the estate of David Reeves. Built from 1850-1874, it is one of the many buildings on the estate, which extended to the Schuylkill. A larger mansion stood on the sight of Holy Ghost Orthodox Church.*
8. CROSS and RIGHT on Bridge Street. You'll walk under the tracks for the old Philadelphia and Reading Railroad and pass the former *Phoenixville Station* (now Columbia Station) on the right.
9. Cross the Schuylkill River on the *Phoenixville-Mont Clare (or Intercounty) Bridge*.
10. LEFT onto the *Schuylkill Canal Tow Path (Schuylkill River Trail)* toward Lock 60.
11. Explore Lock 60 (*The Lock Tenders House is visible across the canal.*).
12. TURN AROUND and return to Bridge Street.
13. RIGHT on Bridge Street and walk to Main Street – *you'll pass the*

*Administration Building of the Phoenix Iron Company (101 Bridge) on the right and the beautiful and historic Columbia Hotel (148 Bridge - now the Great American Pub) on the left.*

14. CROSS and RIGHT on Main Street. *(The small building behind Renaissance Park is the one of the oldest houses in Phoenixville. Its current façade hides the 1732 log cabin home of James Starr, founder of a nail company that evolved into Phoenix Steel. Ahead on the left explore the grounds of the beautifully restored Phoenix Iron Company Foundry and see the Symbols of Steel Sculpture Garden and the 1871 Phoenix Column Bridge. Just behind the foundry, you'll also see a row of small homes on Mill Street. These were company housing for laborers at the Phoenix Iron Company and known as Nailers' Row.)*
15. TURN AROUND to return to Bridge.
16. CROSS Bridge Street and continue to Church Street – passing Brown's Cow Ice Cream Parlor (in season).
17. RIGHT on Church Street -- the Phoenixville Historical Society will be on the far corner.
18. RIGHT into the Municipal Parking Lot on the right and go straight through the lot to the alley (Prospect Street).
19. RIGHT on Prospect.
20. LEFT on Banks Street (brick alley) to Bridge.
21. CROSS and RIGHT on Bridge at the crosswalk to return the Steel City Coffeehouse.



The Chester County Red Rovers thank you for completing our Year-Round Walk – **Phoenixville – Rising from the Ashes!**  
Jeanne Clancy (Point of Contact) – 484-432-8541



**Chester County Red Rovers**  
**Phoenixville – Rising from the Ashes**  
**10K ~ Y1839 – Rated 2B**

**These walk directions and maps may only be used in conjunction  
with a signed American Volkssport Association athletic waiver.  
All other uses are prohibited.**

Originally called Manavon, Phoenixville was settled in 1732 and incorporated in 1849. In its industrial heyday, early in the twentieth century, it was an important manufacturing center and the site of great iron and steel mills such as the Phoenix Iron Works, boiler works, a silk mill, underwear and hosiery factories, a match factory, and Griffen, Smith & Hill, the producer of the famous (and now highly collectible) Etruscan Majolica Pottery. These mills have long since closed, and the town has changed over the decades but has retained its heart of steel. The Borough is now home to numerous events like the Dogwood Festival, Blobfest, food festivals, and a Farmer's Market. Phoenixville has certainly risen from the ashes of its humble and hardworking roots to become the Borough it is today.

**Start Point:** Steel City Coffeehouse - 203 Bridge St, Phoenixville, PA 19460

**Special Programs:** Par for the Course, Step to the Beat, Town/City Halls, Walk with America's Veterans

**Directions:**

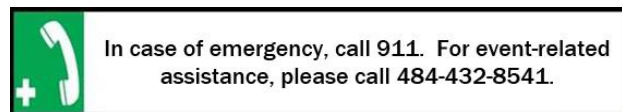
1. Begin and end at B on map.
2. Exit the Steel City Coffeehouse and turn RIGHT on Bridge Street and walk to the traffic light. *You will pass The Colonial Theatre on the right. The Colonial, which opened in 1903 as a vaudeville theatre and opera house, is the centerpiece of Phoenixville's recent renaissance. You can catch a free tour at 12:30 pm on the first and third Sundays if you make a reservation by 5:00 on the Thursday prior.*
3. RIGHT on Gay Street. Walk across the Gay Street Bridge, then cross the street at Vanderslice Street and walk back down the bridge to Bridge Street. Note the informational signs on both sides. (On Saturdays, there is a farmers' market under the bridge.)
4. CROSS and RIGHT on Bridge Street, passing Borough Hall on the right, and walk to Church Street – the Hotel Chester (now Sips Bistro) will be straight ahead.
5. LEFT on Church Street to Gay Street.
6. RIGHT on Gay Street, passing the Phoenixville Post Office on the right and the old Gay Street School on the left. *(If you glance down Morgan Street to the right, you will see the former Byrne Knitting Mills, manufacturer of*

- underwear and shoelaces on the left.)*
7. CROSS and LEFT on Second Avenue to Main Street. As you approach Main Street:
    - a. *The Phoenixville Library (the only Carnegie Library in Chester County) will be on the far-left corner. If you have time, stop in to see the beautiful reading room. (Public restrooms)*
    - b. *The entrance to Reeves Park will be on the far-right corner – the park features a bandshell, a chess garden, a veterans’ monument, a memorial to David Reeves (president of the Phoenix Iron Company from 1855 to 1871), a Griffen Gun, several Veteran’s Memorials, and an All-Ability Playground.*
    - c. *The beautiful stone building on the near-right corner was originally the Byrne Mansion.*
  8. RIGHT on Main Street. *At the corner of Main and Third, the Saint Ann Church (on the far-right corner) was a gift to the community from the Byrne Family, and the gorgeous Victorian on the near right corner was “Doc’s House” in The Blob.*
  9. Continue on Main Street and turn RIGHT on Fourth Avenue.
  10. LEFT on Gay Street (note the mural on the rear wall of the Gateway Pharmacy – painted by Teresa Haag who has a gallery on Gay Street) and CROSS Nutt Road (Route 23) at Phoenixville Hospital.
  11. Continue on Gay to Virginia Avenue (some of the most beautiful homes in Phoenixville are in this neighborhood).
  12. LEFT on Virginia Avenue to Main Street.
  13. LEFT on Main Street to Nutt Road.
  14. CROSS and RIGHT on Nutt Road, also crossing Manavon Street – continue on Nutt to Starr Street.
  15. LEFT on Starr Street to Bridge Street. (The Acme has public restrooms.).
    - a. *Shortly before Bridge, you’ll pass a yellow mansion, on the right, that was one of the homes in Phoenix Park, the estate of David Reeves. Built from 1850-1874, it is one of the many buildings on the estate, which extended to the Schuylkill. A larger mansion stood on the sight of Holy Ghost Orthodox Church.*
  16. CROSS and RIGHT on Bridge Street. You’ll walk under the tracks for the old Philadelphia and Reading Railroad and pass the former Phoenixville Station (now Columbia Station, a catering venue).
  17. Cross the Schuylkill River on the Phoenixville-Mont Clare (or Intercounty) Bridge.
  18. LEFT onto the Schuylkill Canal Tow Path (Schuylkill River Trail) toward Lock 60.
  19. Explore Lock 60 (*The Lock Tenders House is visible on the right across the canal.*).

20. TURN AROUND and return to Bridge Street.
21. RIGHT on Bridge Street and walk to Main Street – *you'll pass the Administration Building of the Phoenix Iron Company (101 Bridge) on the right and the beautiful and historic Columbia Hotel (148 Bridge - now the Great American Pub) on the left.*
22. CROSS and RIGHT on Main Street. *(The small building behind Renaissance Park is the one of the oldest houses in Phoenixville. Its current façade hides the 1732 log cabin home of James Starr, founder of a nail company that evolved into Phoenix Steel. Ahead on the left explore the grounds of the beautifully restored Phoenix Iron Company Foundry and see the Symbols of Steel Sculpture Garden and the 1871 Phoenix Column Bridge. Just behind the*

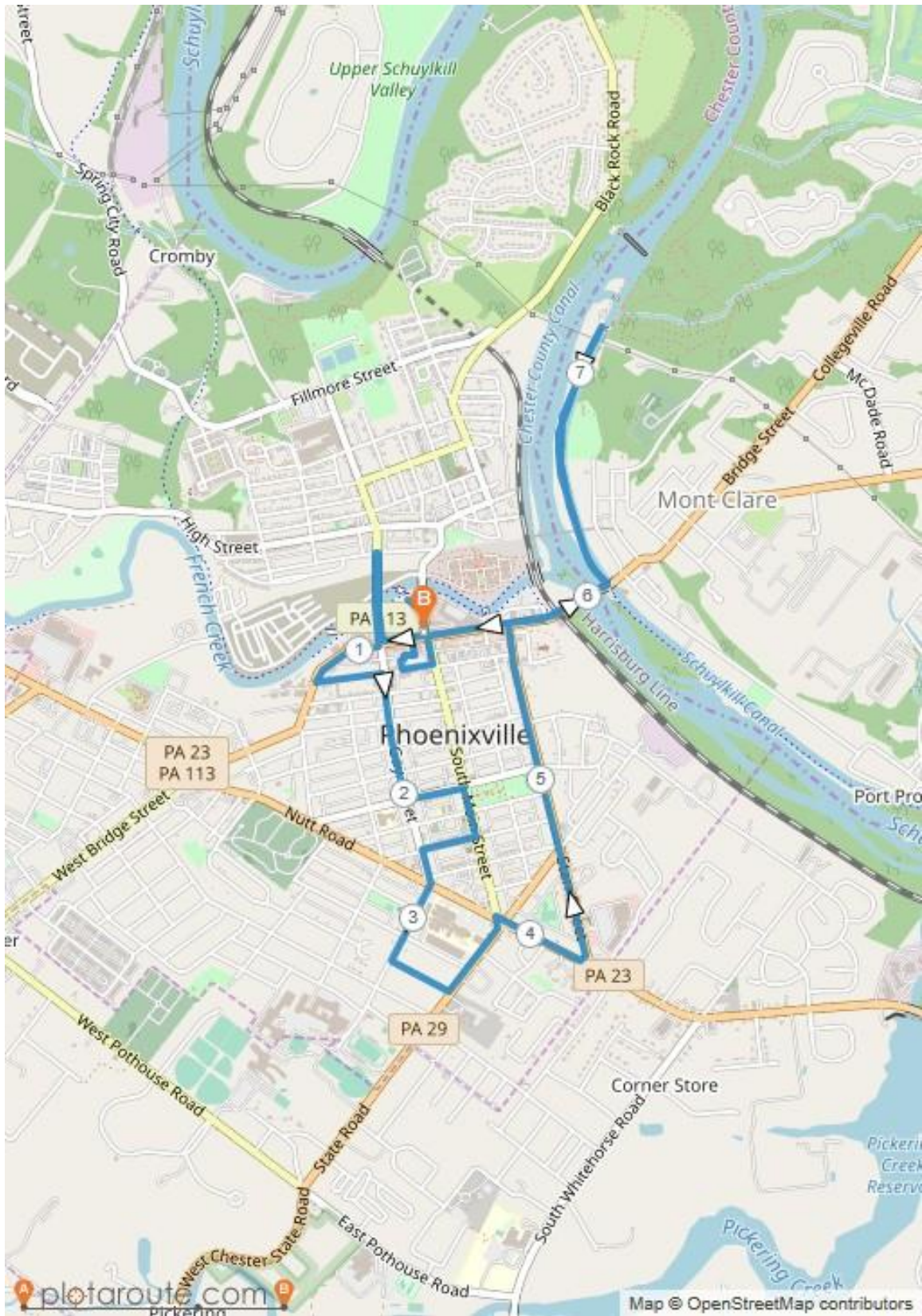
*foundry, you'll see a row of small homes on Mill Street. These were formerly company housing for laborers at the Phoenix Iron Company and known as Nailers' Row.)*

23. TURN AROUND and walk back up Main Street to Bridge.
24. CROSS Bridge Street and continue to Church Street – passing Brown's Cow Ice Cream Parlor (in season).
25. RIGHT on Church Street -- the Phoenixville Historical Society will be on the far corner.
26. RIGHT into the Municipal Parking Lot on the right and go straight through the lot to the alley (Prospect Street).
27. RIGHT on Prospect.
28. LEFT on Banks Street (brick alley) to Bridge.
29. CROSS and RIGHT on Bridge at the crosswalk to return the Steel City Coffeehouse.



The Chester County Red Rovers thank you for completing our Year-Round Walk – **Phoenixville – Rising from the Ashes!**  
Jeanne Clancy (Point of Contact) – 484-432-8541

# Phoenixville 10K Map



## While You're Visiting West Chester ...

### Take Time for Lunch

- Bistro on Bridge – 212 Bridge Street
- Great American Pub – 148 Bridge Street
- Iron Hill Brewery – 130 Bridge Street
- La Patrona – 400 Bridge Street
- Molly Maguires – 197 Bridge Street
- Nudy's – 450 Bridge Street
- Ryan's Pub – 233 Bridge Street
- Sedona – 131 Bridge Street
- Uncommon Ramen – 239 Bridge Street (when it's open)
- Vecchia Pizza – 249 Bridge Street

### More to See and Do

- The Colonial Theatre – Home of the Blob – 227 Bridge Street
- Medal of Honor Grove at the Freedoms Foundation – 1601 Valley Forge Road, Phoenixville
- Phoenixville Farmers Market – Saturdays – under the Gay Street Bridge
- Valley Forge National Historic Park
- Wharton Esherick Museum (by appointment – 610-644-5822) – 1520 Horse Shoe Trail, Malvern

## CCRR Year-Round Walks - Phoenixville

### AVA / KVA Special Programs -- 2024

#### AVA WALKS

Title	Expires	10K	5K
A-MAZE-ing Labyrinths	December, 2026		
Appalachian Trail	December, 2029		
IVV - Americas	No end date		
Lighthouses II	December, 2025		
Par for the Course	December, 2025	yes	yes
Rails-to-Trails	December, 2025	yes	yes
Step to the Beat	December, 2026	yes	yes
Town Halls/City Halls	December, 2024	yes	
Walking with America's Veterans	December, 2027	yes	yes
Walking the United States	No end date		
Walking the USA A-Z	No end date	yes	yes
Washington-Rochambeau National Historic Trail	December, 2031		

#### KVA WALKS

Title	Expires	10K	5K
67 Counties	No end date		
Appalachian Trail Thru Hike (PA only)	December, 2023		

#### Expired Special Programs

Title	Expired	10K	5K
Airports: Celebrating American Flight	December, 2022		
Border Crossings	December, 2023		
Great Lakes, Great Fun, Great Fitness	December, 2023		
Mayflower: 400th Anniversary	December, 2022		
Rockin' Around the Clock	December, 2022		
Bridges – Spanning the USA			
Carousels Across America			
Ice Cream Parlors			
Lady Liberty			
Little Free Libraries			
Make a Wish at a Water Fountain			
National Park Centennial			
Points of Reference			
State Street Sashay			
Take a Walk in a City Park			
Treasure Hunt			
United States Post Office			
Vice Presidential Walks			

Underground Railroad			
Walking the Path of Inventions			
Walk the USA – Street by Street			