



ASHLAND DOWNTOWN ART WALK
TRAIL RATED 1A – 6K; 1B - 10K
©Nebraska Wander Freunde Trailblazers 1/1/22
**SPECIAL PROGRAMS: Little Free Library, Rockin’
Round the Clock (2), Walking with America’s
Veterans, Town Halls/City Halls**



Ashland, Nebraska is known for its art and small-town flavor. The business district will invite you to linger at the many small shops, eateries, and galleries. Ashland is located along the flood plain of Salt Creek, so the 6k route is rated 1A for a nice flat stroll on neighborhood and business sidewalks. The 10k route includes a crushed rock trail along Salt Creek, making it a 1B rating. Insect spray is recommended during the summer months for this portion of the route.

This walk is also available through a physical walk box—please do not register at that location or use any materials from that walk box.

Walk Registration:

Registration takes place online using the AVA Online Start Box, on my.ava.org . Follow the instructions provided to create a user account and sign the AVA waiver (one time). Instructions for payment are also included. Download the directions and print as needed. The POC does not provide event directions or accept alternate payment methods.

Walk Completion and Walk Credit:

Once you have physically completed the walk, please login to your Online Start Box account click on the “My Start Box” tab, then the “Finish Table” tab, then click on “Go to Finish Table” button for the event you have completed. Use the displayed entry form to submit the date and distance of your walk as well as select applicable AVA Special Programs to generate stamped “virtual” insert cards that you may choose to print out.

Table of Contents:

Use the following table to guide what portion of this document you may wish to print out.

Section Contents	Pages
Introduction, Walk Registration/Completion, and Table of Contents	1
Driving Directions, Notes, Special Programs	2
6k Directions and Map	3-4
10K Directions and Map	5-6

ASHLAND DOWNTOWN ART WALK

Starting Point Location:

41.038943, -96.366927

OxBow Trail System Parking Lot
1241 Silver St, Ashland, NE 68003

You will start your walk at the OxBow Trail System Parking Lot on Silver Street, near the Ashland Public Library.

From the west: From I-80 eastbound take exit 420 (NE-63) left (north) on NE-63 to Ashland 3.1 miles to US 6. Turn right (northeast) on US 6 about 1.8 miles to NE-66. Turn left on NE-66 to Ashland. Take NE-66 (turns into 14th St in town) for about 0.5 miles to Silver St. Turn right on Silver St. for one block to parking on your right.

From the east: From I-80 westbound take exit 432 (NE-31). Exit right (north) to NE-31 to US-6/Gretna/Ashland 0.2 miles. Left (southwest) on US-6 about 7.4 miles to NE-66. Right on NE-66 about 0.5 miles to Silver St. Turn right on Silver St. for one block to parking on your right.

Restrooms:

Restrooms available at the library when open, Casey's Gas Station on 14th St. 1.5 blocks south of Silver St. (2.5 blocks from start point), Wiggernhorn Memorial Park (seasonal only), the No Frills Supermarket at 2301 Silver St. after leaving the cemetery on the 10K walk, or Cherio's Café near the end of walk for both 6k and 10K.

Emergency Numbers:



In case of Emergency: Dial 911
Event related assistance:
Karen Dix-Johnson 402.452.8422

Notes on the Directions

- Walking directions are followed by compass directions in parentheses.
- Ashland's numbered streets run North/South. East/West streets are named streets.
- Carefully walk against traffic on streets without sidewalks.

About Ashland:

This authentic small town main street is lined with gift shops, galleries, unique shops, and an old-fashioned ice cream parlor. Located on historic U.S. Route 6, considered the longest highway in the U.S., it is home to the Gene Roncka Willow Point Gallery and Museum and Cooper Studio and Gallery. It is within four miles of three of the most popular attractions in the state of Nebraska including the Strategic Air and Space Museum, Mahoney State Park and the Lee G. Simmons Conservation Park and Wildlife Safari.

Be sure to browse the shops in downtown Ashland! Whether you're an art lover, a window shopper or just looking for a gift for a friend, you're sure to find something you'll treasure in Ashland!

SPECIAL PROGRAM QUALIFIERS

Little Free Library

- Near 1540 Furnas St.

Rockin' Round the Clock

- 1324 Silver Street (Library)
- 1501 Silver Street (Farmers and Merchants Bank)

Walking with America's Veterans

- You will find several qualifiers on Memorial Circle in the cemetery on the 10K route

Town Halls/City Halls

- 2304 Silver St., Ashland, NE 68003

6k Directions

These walk directions and maps may only be used in conjunction with a signed American Volkssport Association athletic waiver. All other uses are prohibited.

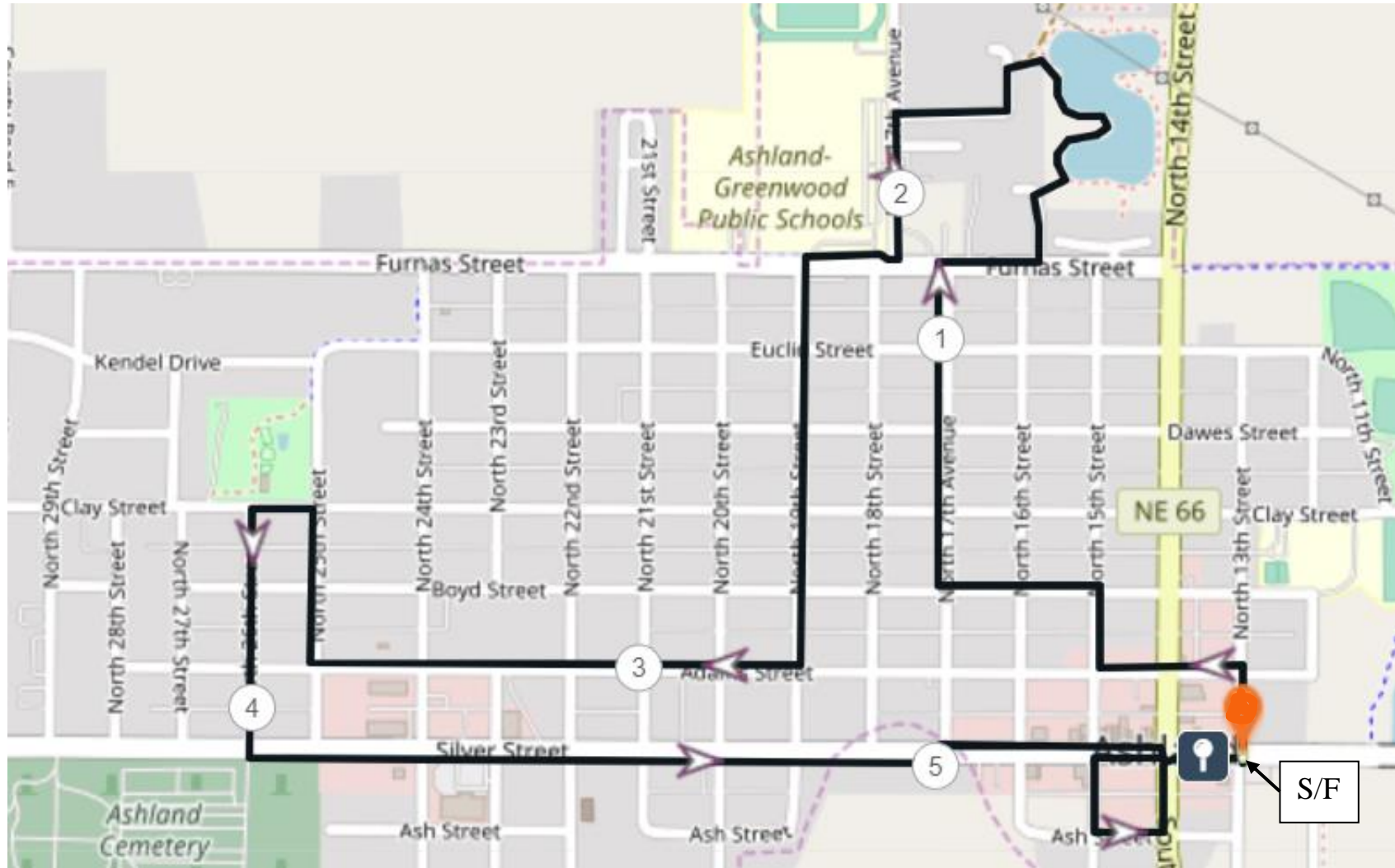
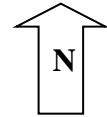
1. Exit the parking lot at 13th and Silver Streets.
2. **Carefully CROSS** Silver St. following N. 13th St. (n) to and **CROSS** Adams Street.
3. **LEFT to and CAREFULLY CROSS** N 14th St.
4. **Continue** (w) on Adams St. to N. 15th St.
5. **RIGHT** (n) on N. 15th to and **CROSS** Boyd.
Notice: Carnegie Public Library at 207 N. 15th St. It was built in 1911, one of 2,500 built world-wide. It is now a museum.
6. **LEFT** (w) on Boyd St. to and **CROSS** N 17th St.
Notice at 16th & Boyd: First Congregational Church built 1906 in Romanesque style.
Notice at 17th & Boyd: First Christian Church built 1883-1925 for \$2,908.80 built in Romanesque style.
7. **RIGHT**(n) on 17th to Furnas St. and **CAREFULLY CROSS.**
8. **RIGHT**(e) passing Retaining Wall to rock road.
9. **LEFT** (n) to path to the lake.
10. **RIGHT** (n.e.) to path around the lake.
11. **LEFT** on the path along Oxbow Lake, walking along the near side of the lake, to an intersection that goes West up a hill.
12. **LEFT** (w), **uphill**, toward an old gas pump.
Notice: the cost of a gallon of gas on the pump!
13. **LEFT** at the old gas pump, following Noble Dr. around to N. 17th St.
14. **LEFT** (s) on N. 17th to Furnas St.
15. **RIGHT** (w) on Furnas to N. 19th St.
16. **LEFT** (s) **CAREFULLY CROSS** Furnas.
17. **CONTINUE** (s) on N. 19th St. to Adams St.
18. **RIGHT** (w) on Adams St. to N. 25th
19. **RIGHT** (n) on N. 25th St. to Clay St.
20. **LEFT** (w) on Clay St. to N 26th St. (**Little Free Library #66544**).
21. **LEFT** (s) on N. 26th Street to and **CROSS** Silver St.
Notice: The Entrance Gate to the Cemetery has a special plaque for Veterans-AVA Program.
22. **LEFT** (e) on Silver to N 17th St. (**City Hall Special Program, 23rd and Silver**).
23. **LEFT** and **CAREFULLY CROSS** Silver St.
24. **RIGHT**(e) on Silver St. to N 14th St.
Notice: Historic downtown Ashland is located between N. 16th & N. 14th on Silver Street. Public Clock at 15th. Cheri O's is a vintage Ice Cream Parlor and eatery.
25. **RIGHT** (s) on N. 14th **CROSSING** Silver St.
26. **RIGHT** (w) on south side of Silver St. to S. 15th St.
Notice: Willow Point is a do-not-miss art gallery on the south side of Silver. It houses a wildlife collection and is the home of Roncka's Art Studio.
27. **LEFT** (s) on S. 15th one block to Ash St.
28. **LEFT** (e) to 14th St.
29. **LEFT** (n) on 14th St. to Silver St.
30. **RIGHT** (e) Silver St. back to parking lot.
Notice: Sculpture & Public Clock at Library at 13th & Silver.

ASHLAND DOWNTOWN ART WALK

Ashland Downtown Art Walk – 6k

Starting Point: Oxbow Trail System Parking Lot, 1241 Silver Street, Ashland, NE 68003

41.038943, -96.366927



	Emergency: Call 911
	NWFT Club: Steve Burkland 402.659.1954
	Regional Director: Susan Pinneke 515-423-8427

These walk directions and maps may only be used in conjunction with a signed American Volkssport Association Athletic Waiver. All other uses are prohibited.



10K Directions

These walk directions and maps may only be used in conjunction with a signed American Volkssport Association athletic waiver. All other uses are prohibited.

1. **From the parking lot, RIGHT** (e) along Silver St. to crushed rock path, just before the bridge.
2. **Carefully CROSS Silver St. and Follow** the Oxbow Trail/Saline Ford Trail along Salt Creek(n) about 1 km to where intersections on the left occur. Take the 2nd left (closest to the orange signpost), pass the sewage treatment buildings on your left, to a small stop sign at N. 14th St. and **CAREFULLY CROSS** N. 14th St.
3. **RIGHT** (n) to cross Furnas St., then **LEFT** (w) to mailbox showing "1540 Furnas".
4. **RIGHT** (n) on gravel road to a path to the lake.
5. **RIGHT** (n.e.) on path to the lake.
6. **RIGHT** (e) on the path around the Oxbow Lake, walking counterclockwise, to an intersection that goes West up a hill.
7. **RIGHT** (w) toward an old gas pump.
✓**CHECKPOINT:** What is the cost of a gallon of gas on the pump?
8. **LEFT** at the old gas pump, following Noble Dr. around to N. 17th St.
9. **LEFT** (s) on N. 17th to Furnas St.
10. **RIGHT** (w) on Furnas to N. 24th St.
11. **LEFT** (s) and **CAREFULLY CROSS** Furnas, staying on N. 24th to Euclid.
12. **RIGHT** (w) on Euclid. It will curve south and become N. 25th St.
13. **STAY** (s) on N. 25th St. & **TAKE** sidewalk as it curves right (southwest) through Wiggerhorn Memorial Park to Clay St. **Note:** Seasonal toilets are available near the end of the sidewalk on the left before sidewalk turns sharply right.
14. **LEFT** (w) on Clay to N. 26th St. (**Little Free Library #66544.**)
15. **RIGHT** (s) on N. 26th to Boyd St.
16. **RIGHT** (w) on Boyd to N. 27th Street.
17. **LEFT** (s) on N. 27th to Adams St.
18. **RIGHT** (w) on Adams to N. 28th St. and **CROSS**.
19. **LEFT** (s) on N. 28th to Silver St.
20. **RIGHT** (w) on Silver to N. 29th St.
21. **LEFT** (s), crossing Silver into the cemetery.
22. **RIGHT** (w, s, e, n) to follow the perimeter roads of the cemetery. (See map.) Follow American Lane to Liberty Lane to Cardinal Drive to a sharp left at Rose Avenue to Memorial Drive and to Memorial Circle (the top of the hill).
✓**CHECKPOINT:** What is the American Legion number (**Veterans Program**) visible on the tablet to the right (n) of the flagpole?
23. **EXIT** (n) Memorial Circle between the flagpoles on Memorial Drive to cemetery gate at Silver.
24. **RIGHT** (e) on Silver to N. 21st St. (**City Hall Special Program, 23rd and Silver**).
25. **LEFT** (n) **CROSSING** Silver along 21st to Adams St.
26. **RIGHT** (e) on Adams to N. 19th St.
27. **LEFT** (n) on N. 19th to and **CROSS** Boyd St.
28. **RIGHT** (e) on Boyd to N. 14th St.
Notice at 17th & Boyd: First Christian Church built 1883-1925 for \$2,908.80 built in Romanesque style.
Notice at 16th & Boyd: First Congregational Church built 1906 also built in Romanesque style.
Notice just south of 15th & Boyd: Carnegie Public Library at 207 N. 15th St. built in 1911.
29. **RIGHT** (s) on N. 14th to Adams St.
30. **RIGHT** (w) on Adams to and **CROSS** N. 18th St.
Notice: St. Stephen's Episcopal Church, 201 N. 16th St., built in 1872, Gothic revival architecture. Oldest church in Nebraska.
31. **LEFT** (s) on N. 18th, crossing Adams St., to Silver.
32. **LEFT** (e) on Silver, crossing N. 18th St. to N. 14th.
Notice: Historic downtown Ashland is located between N. 16th & N. 14th on Silver Street. Public Clock at 15th. Cheri O's is a vintage Ice Cream Parlor and eatery.
33. **RIGHT** (s) on N. 14th and **CROSS** Silver.
34. **RIGHT** (w) on south side of Silver to S. 15th St.
Notice: Willow Point is a do-not-miss art gallery on the south side of Silver. It houses a wildlife collection and is the home of Roncka's Art Studio.
35. **LEFT** (s) on S. 15th one block to Ash St.
36. **LEFT** (n) on S. 14th to Silver St.
37. **RIGHT** (e) on Silver St. back to parking lot.
Notice: Sculpture & **Public Clock** at Library at 13th & Silver.

