

WATERTOWN NY Seasonal Walk 5/10K

EVENT ID: Y2076

WALK Dates: April 1st through December 31st

START POINT: The public parking lot off Black River Parkway (no charge) behind JB Wise Plaza. GPS coordinates of the start point (43.583332 -75.543414). **NOTE the start point on the map is the old one, Directions match new start point.**

TRAIL DESCRIPTION: The 5K course is on sidewalks with 1 set of stairs which can be by passed. The 10K has one large (400 foot) hill and is on city streets with sidewalks for most of the way. There is one section where you must walk on the street in the park (no sidewalk)

TRAIL RATING: 3B

AWARDS AND FEES: This event is available for on line registration only. (www.my.ava.org). A minimal charge is incurred for the directions. IVV walk credit only.

AVA SPECIAL PROGRAMS

- Walking the USA, A-Z
- Walking with America's veterans
- IVV Americas
- Walking the United States

DRIVING INSTRUCTIONS:

From Canada and North or South: Interstate 81 to exit 45 (Arsenal Street NY Route 3 Watertown). From the North left toward town, from the South right toward town. Follow Arsenal Street until you reach the junction with Route 11/12F. Left on Route 11/12F. At the 3rd right hand street, turn right. This is Black River Parkway. The parking lots are on your right about 300 yards ahead. The lots are labeled JB Wise Plaza and are across from the whitewater rafting business.

PETS: Leashed pets are allowed on all walks, and you must clean up after them.

RESTROOMS: There are public restrooms in the parking lot area. After you leave the SP there are a number of restaurants and other businesses you pass where there are restrooms

These walk directions and maps may only be used in conjunction with a signed American Volkssport Association athletic waiver. All other uses are prohibited.

and food. On the 10K once you leave down town restrooms are not available. The 5K stays in down town for the most part.

AMENITIES: The route takes you through the county seat of Jefferson County NY. Note on the 10K there is a long stretch (5K) to the park and back where there are no restrooms or food. The town park has a zoo and was designed by Frederick Law Olmstead. The zoo is not on the route, but close to the 10K. Watertown was a mid 1800's boom town and has a number of historic buildings in the town center. Of particular interest is the 1850's park called center square at the heart of the town. If open, there is the first indoor mall in the US circa 1890's. Also, in the center of town, is the store where Frank W. Woolworth (of the Woolworth chain) got his start in the early 1900's. Currently Watertown is the home of the 10th Mountain Division stationed outside town at Fort Drum.

REMEMBER: You must log back into OLSB to finish online registration procedures after completing the Event.

Contacts:

In case of Emergency Dial 911

POC: Bill Peeck, wpeeck@rochester.rr.com, phone 585-227-6025

NFVC website: <https://avaclubs.org/NFVC/>

These walk directions and maps may only be used in conjunction with a signed American Volkssport Association athletic waiver. All other uses are prohibited.

WATERTOWN NY 10K WALK INSTRUCTIONS

1. From the JB Wise parking lot turn and face away from the whitewater rafting building. Straight ahead you will see Empasall's Plaza.
2. Walk toward Empasall's, go right to enter the sidewalk to take you up to Public Square.
3. At the top of the hill, go right. This is the Public Square. Go to the cross walk and cross to the left you are on the corner of Washington and Arsenal. In this area if you walk about 100 meters up Washington Street. You will find the historic Paddock Arcade on your right. (The Arcade is the oldest continuously run pedestrian mall in the country. It has a 174-foot faulted gallery with 2nd floor offices that overlook the 1st floor. If open walk through and exit. You will come out on Arsenal Street (to the right after you exit)). This area is also the site where Frank W. Woolworth started his career. He planned to build a Woolworth Department Store on the site, but he died in 1919 before it was built. The Woolworth Company completed the store in 1921. It has been restored. See the sign over the entrance.)
4. If the Paddock Arcade is closed. Just turn right and follow Arsenal Street.
5. If you are coming out of the Paddock Arcade turn left and follow the sidewalk along Arsenal St. You will see on your left the Old Post Office, which is now the Jefferson County Court Complex.
6. At Sherman Street you will have passed the original Jefferson County Courthouse.
7. LEFT on Sherman.
8. Follow Sherman on the left sidewalk until you pass Trinity Episcopal Church. Keep going to the corner of Ten Eyck Street
9. Turn right to follow Ten Eyck St. to Holcomb St.
10. LEFT on Holcomb St to Paddock St.
11. LEFT on Paddock ST to Sherman St.
12. RIGHT on Sherman. Cross Flower, Woodruff, Pratt, and the Sherman School (right).
13. Once you get to the stop sign at Chestnut St, turn LEFT on to Chestnut St.
14. Stay on the left sidewalk on Chestnut. Pass the stone Presbyterian Church on your left.
15. At the street light, four corners STOP. Before you cross if you need a rest or drink, turn right and you will see Dunkin Donuts and Kinney Drug Store on your right. If you use them return to this corner. (NOTE the corner is Washington Street US Route 11).
16. CROSS Washington Street to Thompson Blvd.
17. Stay on the left side walk of Thompson BLVD. Keep going straight. Cross Myrtle Ave, Green St. and continue up hill to the stop sign.

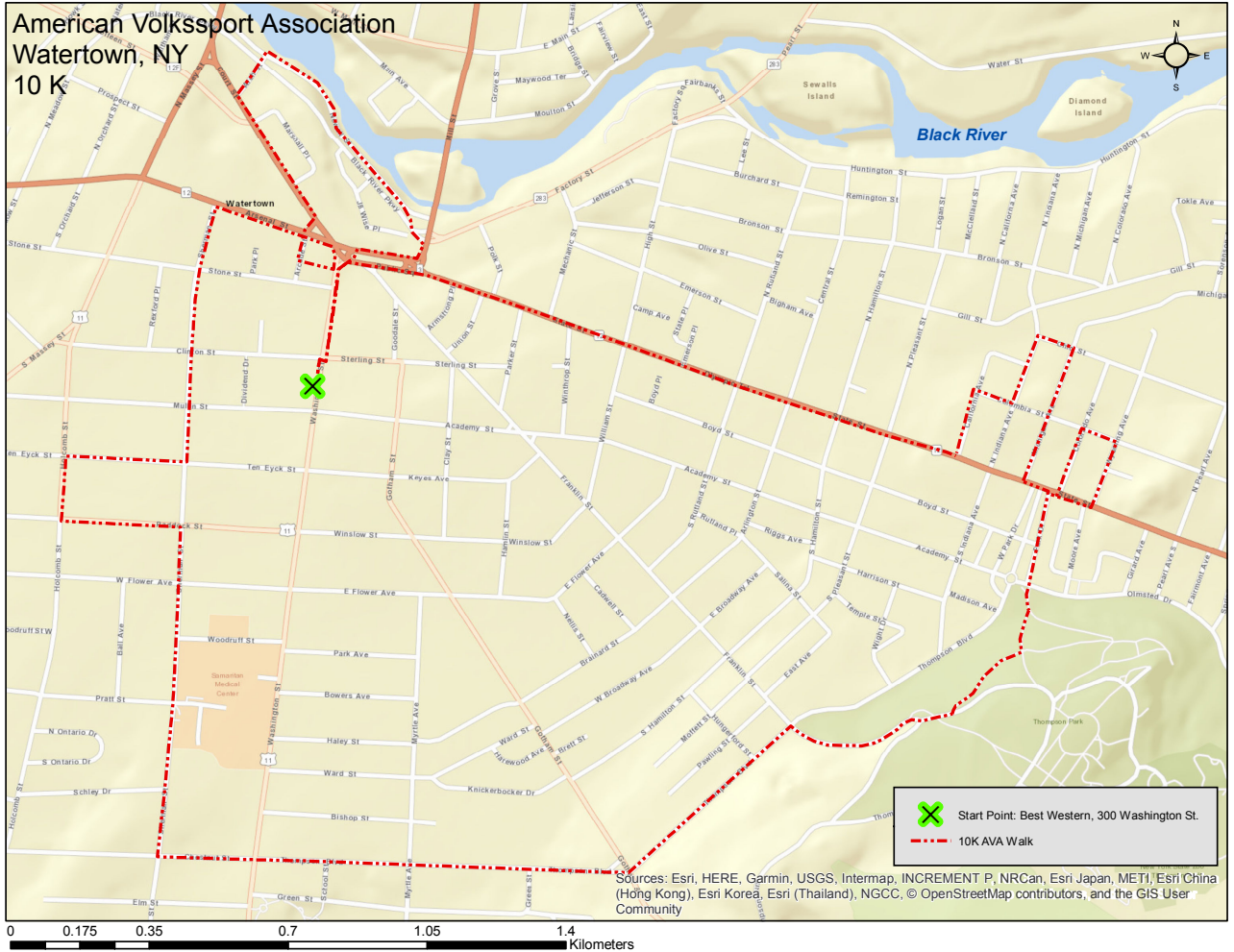
These walk directions and maps may only be used in conjunction with a signed American Volkssport Association athletic waiver. All other uses are prohibited.

18. Carefully CROSS Gotham street going straight ahead. Stay on the left side of Thompson Blvd on the sidewalk.
19. At Franklin St., see the entrance to Thompson park on the right. Turn RIGHT and cross Thompson Blvd to enter the park at Tower Entrance Dr.
20. FOLLOW the walking path on the left side of Tower Entrance Dr. You will go up hill for a bit. Pass West Tower St, stay on the sidewalk for the view.
21. Find the Pinnacle. It will be on your LEFT and you can see over the lookout for views of the eastern side of Watertown and beyond.
22. Continue on Tower Entrance DR until you get to East Tower Dr.
23. LEFT on East Tower Dr. (Right goes to the zoo (not on the route).
24. CROSS the road to the sidewalk which will be on the right side going down hill
25. At the bottom of the hill STAY RIGHT at the Circle
26. Follow the side walk to Park Drive. Go through the stone gates on Park Drive until you get to the "T" intersection and traffic light on Park Drive and State Street.
27. Left on State Street. Go 8 blocks to Public Square. Stay on the left sidewalk at Public Square
28. FOLLOW the buildings until you reach Washington Street at the YMCA.
29. LEFT on Washington and go 2 blocks until you pass City Hall (on the left) and reach the Roswell P Flower Library on your left (white building).
If it is open go in the right entrance. Inside is a three-story domed rotunda that is not to be missed. (On your right across the street notice the Masonic Temple, built in 1914 during Watertown's Industrial age, and the Paddock Mansion which is now the Jefferson County Historical Society.)
30. Continue on Washington to Stirling.
31. Right to cross Washington at Stirling.
32. Continue straight ahead on Clinton St (Stirling is on one side of Washington Clinton is on the other side of Washington) until you reach Sherman St.
33. Right on Sherman
34. Right on Arsenal Street.
35. At the next left (T intersection) CROSS the crosswalk to Court ST.
36. CROSS Court Street to the sidewalk on the right side of the street.
37. Turn LEFT and follow the sidewalk down Court Street.
38. At Arch Street turn RIGHT and go downhill under the bridge tunnel.
39. Just after the tunnel turn RIGHT into Veteran's Memorial Riverwalk path. You will be walking with the Black River on your left.
40. Continue until you get to the green building (Adirondack River White Water Rafting.)
41. In FRONT of the building, find the stairs. Take the stairs up to the Black River Parkway.
42. Cross the parkway into the start point parking lot. If you wish to avoid the stairs, just keep going on Newell until you reach the end at

These walk directions and maps may only be used in conjunction with a signed American Volkssport Association athletic waiver. All other uses are prohibited.

Mill Street. You should see the start point parking lot on your right.
Cross safely and return to your car.

MAP FOR THE WATER TOWN NY 10K



These walk directions and maps may only be used in conjunction with a signed American Volkssport Association athletic waiver. All other uses are prohibited.

WATERTOWN NY 5K WALK INSTRUCTIONS

- 1.** From the JB Wise parking lot turn and face away from the whitewater rafting building. Straight ahead you will see Empasall's Plaza.
- 2.** Walk toward Empasall's, go right to enter the sidewalk to take you up to Public Square.
- 3.** At the top of the hill, go right. This is the Public Square. Go to the cross walk and cross to the left you are on the corner of Washington and Arsenal. In this area if you walk about 100 meters up Washington Street. You will find the historic Paddock Arcade on your right. (The Arcade is the oldest continuously run pedestrian mall in the country. It has a 174-foot faulted gallery with 2nd floor offices that overlook the 1st floor. If open walk through and exit. You will come out on Arsenal Street (to the right after you exit)). This area is also the site where Frank W. Woolworth started his career. He planned to build a Woolworth Department Store on the site, but he died in 1919 before it was built. The Woolworth Company completed the store in 1921. It has been restored. See the sign over the entrance.)
- 4.** If the Paddock Arcade is closed. Just continue straight up Washington Street
- 5.** If you are coming out of the back of the Paddock Arcade turn right and go back to Washington Street and turn left up Washington Street. As you walk up Washington Street on the left on Washington and go 2 blocks until you pass City Hall (on the left) and reach the Roswell P Flower Library on the left (white building). If it is open go in the right entrance. Inside is a three-story domed rotunda that is not to be missed. (On your right you will also see Masonic Temple, built in 1914 during Watertown's Industrial age, and the Paddock Mansion which is now the Jefferson County Historical Society.)
- 6.** Continue on Washington until you reach Ten Eyck St
- 7.** Right on Ten Eyck to Holcomb St
- 8.** Left on Holcomb St 1 block to Paddock St
- 9.** Left on Paddock to Washington (2 blocks).
- 10.** Right on Washington to West Flower Street. (1 Block)
- 11.** Right on West Flower to Sherman (1 Block)
- 12.** Right on Sherman to Arsenal Street (6 Blocks). At Sherman St. you will have passed on your right the original Jefferson County Courthouse.

These walk directions and maps may only be used in conjunction with a signed American Volkssport Association athletic waiver. All other uses are prohibited.

- 13.** Right on Arsenal St. to the first T intersection (left). You will pass on your right the old Post Office, which is now the Jefferson County Court Complex.
- 14.** At the next left (T intersection) CROSS the crosswalk to get to Court Street.
- 15.** CROSS Court Street to the sidewalk on the right side of the street.
- 16.** Turn LEFT and follow the sidewalk down Court Street.
- 17.** At Arch Street turn RIGHT and go downhill under the bridge tunnel.
- 18.** Just after the tunnel turn RIGHT into Veteran's Memorial Riverwalk path. You will be walking with the Black River on your left. You are on Newell Street.
- 19.** Continue until you get to the green building (Adirondack River White Water Rafting.)
- 20.** In front of the building, find the stairs on your right. Take the stairs up to the Black River Parkway
- 21.** Cross the parkway into the start point parking lot. If you wish to avoid the stairs, just keep going on Newell until you reach the end at Mill Street. You should see the start point parking lot on your right. Cross safely and return to your car. Remember to log back on to the OLSB to get your walk credit.

These walk directions and maps may only be used in conjunction with a signed American Volkssport Association athletic waiver. All other uses are prohibited.

