

Kansas City, MO – Line Creek 5K YRE 2079 WALK DIRECTIONS

COPYRIGHT © 2026 – South Central Region, AVA: America’s Walking Club

This map and directions may only be used in conjunction with a signed American Volkssport Association (AVA) athletic waiver. All other uses are prohibited.

Please use either the Online Start Box (OSB) or Physical Start Box (PSB) to register and complete the event. Do NOT mix and match, for example, by registering using the OSB then completing your event using the PSB nor signing the PSB log sheet. The sponsoring club only receives credit for an OSB participation when an OSB registration has been completed online by entering your participation date, distances, and any special programs using the OSB.

In case of emergency: Dial 911

Start/Finish point: The walk begins at the Line Creek Community Center. The address for the community center is: 5940 NW Waukomis Dr, Kansas City, MO 64151. There are restrooms located within the community center at the start of the walk. There are no other restrooms available during the walk.

Directions from Downtown Kansas City, MO (Northbound): From downtown Kansas City, MO take I29/35N (To Iowa). Keep left at the fork to continue on I-29 N/US-71 N, follow signs for Interstate 29 N/St Joseph. Keep left to continue on I-29 N. Take exit 3A for Waukomis Dr. Turn Right on NW Waukomis Dr. At the traffic circle, continue straight to stay on NW Waukomis Dr. Community Center will be on your left on NW 60th St. Park in any parking lot area.

Directions towards Downtown Kansas City, MO (Southbound): On southbound I-29 (coming from Omaha, NE), Head south on I-29 S. Take exit 5 for MO-45 N/NW 64th St. Turn Left on NW 64th St. Continue on NW 64th St as it turns into N Gower and then NW 68th St. Turn right on NW Waukomis Dr. The Community Center will be on your right on NW 60th St. Park in any parking lot area.

Special Programs (SP): Walking the USA A – Z (“K”); Walking Missouri Counties (Platte County), Walking With Wild Things

WALK COMPLETION AND CREDIT

Be sure to log back into the OSB system to “finish/complete” your online registration after doing the event. The OSB system does not deduct any event fee from a participant’s Event Bank until they have submitted event completion info including the date the event was walked, the distance walked, and the selection of applicable special programs that person is participating in. Nevertheless, a fee of \$2 for a downloaded PDF is deducted from the user’s Event Bank when the

PDF is downloaded. Later, any PDF fees are credited back to a user's Event Bank when he/she submits the event completion info as a paying for credit participant. Note, however, the \$2 coupon for the downloaded PDF will expire in 60 days.

Please refer any questions or comments on this walk to the walk POC:

Phyllis Gall

phyllis8739@att.net

Phone: 816-506-3134

Location of Special Programs for 5K and 10K walks

Walking With the Wild Things –

5K walk - #3 A fairy garden is at mile marker 4.0 on the OPTION 2 5K walk

10K walk – not available

Kansas City, MO – Line Creek 5K YRE 2079 WALK DIRECTIONS

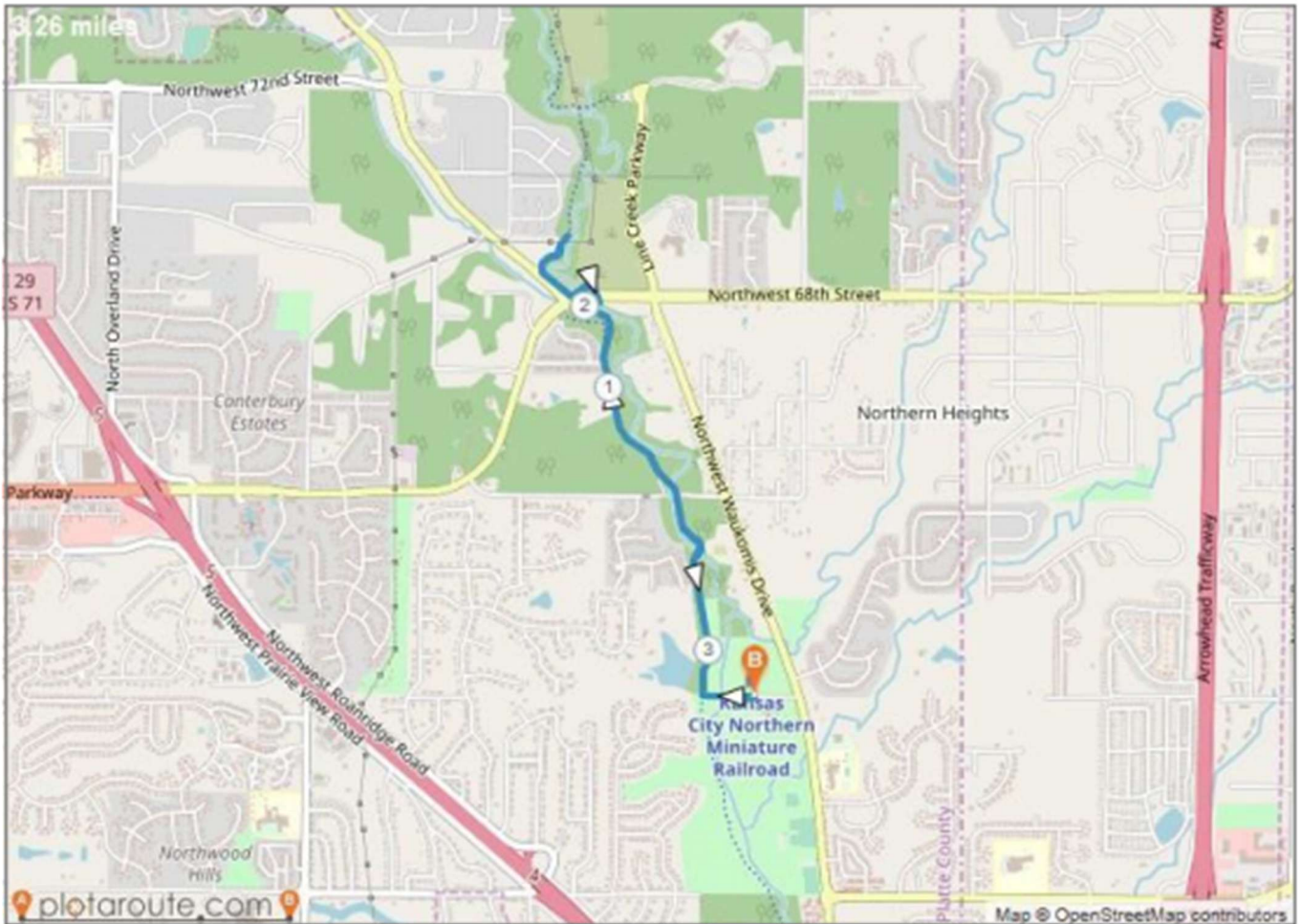
OPTION 1 – includes hills, no special programs

1. Exit community center, turn RIGHT, and walk through the parking lot.
2. Turn LEFT on the drive walking towards Line Creek.
3. At the T, turn RIGHT on the trail. Stay on the trail about 1.2 miles until you reach an accessible path that veers to the right. (Blue accessible sign and yellow bicycle sign indicating a 16% grade.)
4. Follow the trail as it veers downhill to the right.
5. The winding trail will lead you through a tunnel under 68th Street.
6. After going through the tunnel follow the trail uphill to 68th. Turn around at the fence.
7. Retrace the trail by going back through the tunnel.
8. LEFT on the main trail.
9. Continue walking until you reach a “T” in the trail and turn LEFT to return back to the community center and the start point.

Alternate directions if tunnel is muddy and impassable.

1. Return back on the trail until you reach the intersection with the main trail.
2. Veer RIGHT until you reach the 68th St parking lot.
3. RIGHT on the sidewalk at 68th St.
4. Continue to the stop light and pedestrian crossing. Turn LEFT and cross 68th St.
5. Continue on the sidewalk and veer RIGHT back on to the trail. Continue to the first fence and return back to Step 6 in the directions.

Kansas City, MO – Line Creek 5K YRE 2079 WALK DIRECTIONS

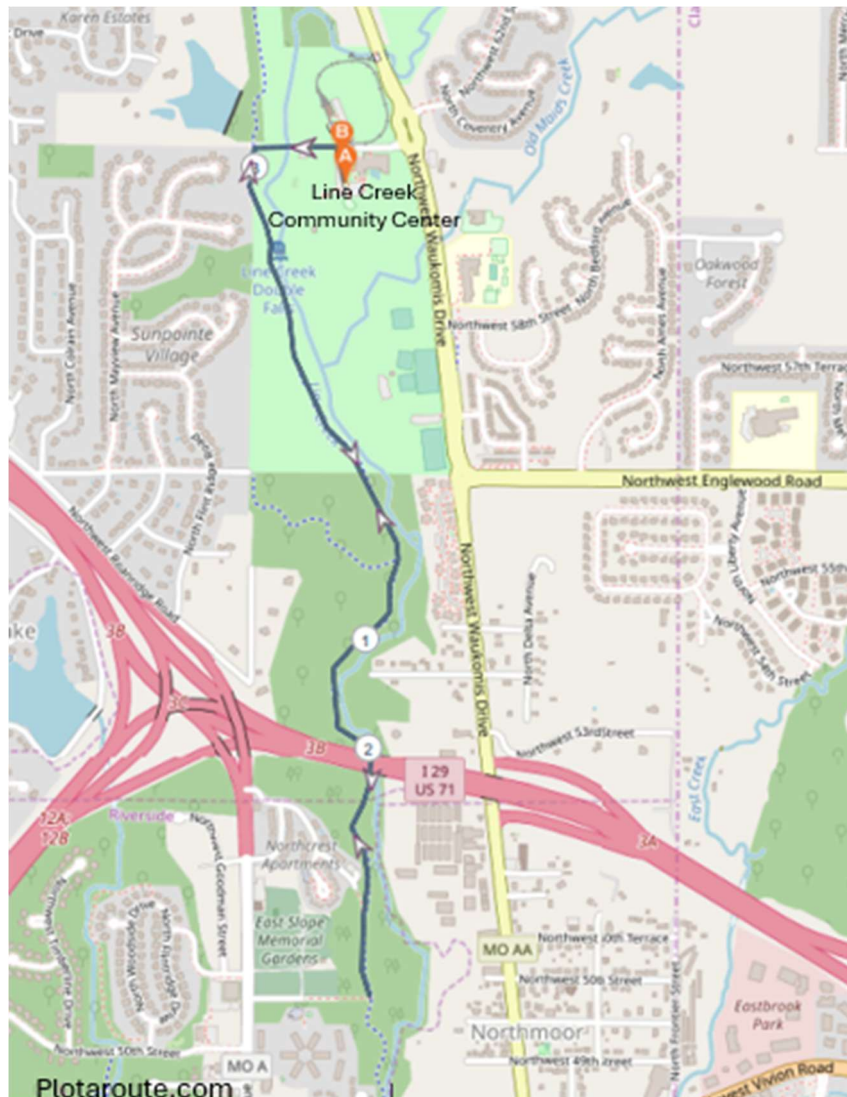


The Clay-Platte Trackers of Kansas City hope you enjoyed our walk! Please visit the AVA website (my.ava.org) for information on other walks in the Kansas City area.

Kansas City, MO – Line Creek 5K YRE 2019 WALK DIRECTIONS

OPTION 2 – includes flat trail and Walking With Wild Things special program

1. Exit community center, turn RIGHT, and walk through the parking lot.
2. Turn LEFT on the drive walking towards Line Creek.
3. At the T, turn LEFT on the trail. Stay on the trail until you reach the 2.87 mile marker.
4. Turn around and retrace the trail going back towards the community center.
5. Continue walking until you reach a “T” in the trail after the 4.2 mile marker and turn RIGHT to return back to the community center and the start point.



Kansas City, MO – Line Creek 10K YRE 2079 WALK DIRECTIONS

COPYRIGHT © 2026 – South Central Region, AVA: America’s Walking Club

This map and directions may only be used in conjunction with a signed American Volkssport Association (AVA) athletic waiver. All other uses are prohibited.

Please use either the Online Start Box (OSB) or Physical Start Box (PSB) to register and complete the event. Do NOT mix and match, for example, by registering using the OSB then completing your event using the PSB nor signing the PSB log sheet. The sponsoring club only receives credit for an OSB participation when an OSB registration has been completed online by entering your participation date, distances, and any special programs using the OSB.

In case of emergency: Dial 911

Start/Finish point: The walk begins at the Line Creek Community Center. The address for the community center is: 5940 NW Waukomis Dr, Kansas City, MO 64151. There are restrooms located within the community center at the start of the walk. There are no other restrooms available during the walk.

Directions from Downtown Kansas City, MO (Northbound): From downtown Kansas City, MO take I29/35N (To Iowa). Keep left at the fork to continue on I-29 N/US-71 N, follow signs for Interstate 29 N/St Joseph. Keep left to continue on I-29 N. Take exit 3A for Waukomis Dr. Turn Right on NW Waukomis Dr. At the traffic circle, continue straight to stay on NW Waukomis Dr. Community Center will be on your left on NW 60th St. Park in any parking lot area.

Directions towards Downtown Kansas City, MO (Southbound): On southbound I-29 (coming from Omaha, NE), Head south on I-29 S. Take exit 5 for MO-45 N/NW 64th St. Turn Left on NW 64th St. Continue on NW 64th St as it turns into N Gower and then NW 68th St. Turn right on NW Waukomis Dr. The Community Center will be on your right on NW 60th St. Park in any parking lot area.

Special Programs (SP): Walking the USA A – Z (“K”); Walking Missouri Counties (Platte County), Walking With Wild Things

WALK COMPLETION AND CREDIT

Be sure to log back into the OSB system to “finish/complete” your online registration after doing the event. The OSB system does not deduct any event fee from a participant’s Event Bank until they have submitted event completion info including the date the event was walked, the distance walked, and the selection of applicable special programs that person is participating in. Nevertheless, a fee of \$2 for a downloaded PDF is deducted from the user’s Event Bank when the

PDF is downloaded. Later, any PDF fees are credited back to a user's Event Bank when he/she submits the event completion info as a paying for credit participant. Note, however, the \$2 coupon for the downloaded PDF will expire in 60 days.

Please refer any questions or comments on this walk to the walk POC:

Phyllis Gall

phyllis8739@att.net

Phone: 816-506-3134

Location of Special Programs for 5K and 10K walks

Walking With the Wild Things –

5K walk - #3 A fairy garden is at mile marker 4.0 on the OPTION 2 5K walk

10K walk – not available

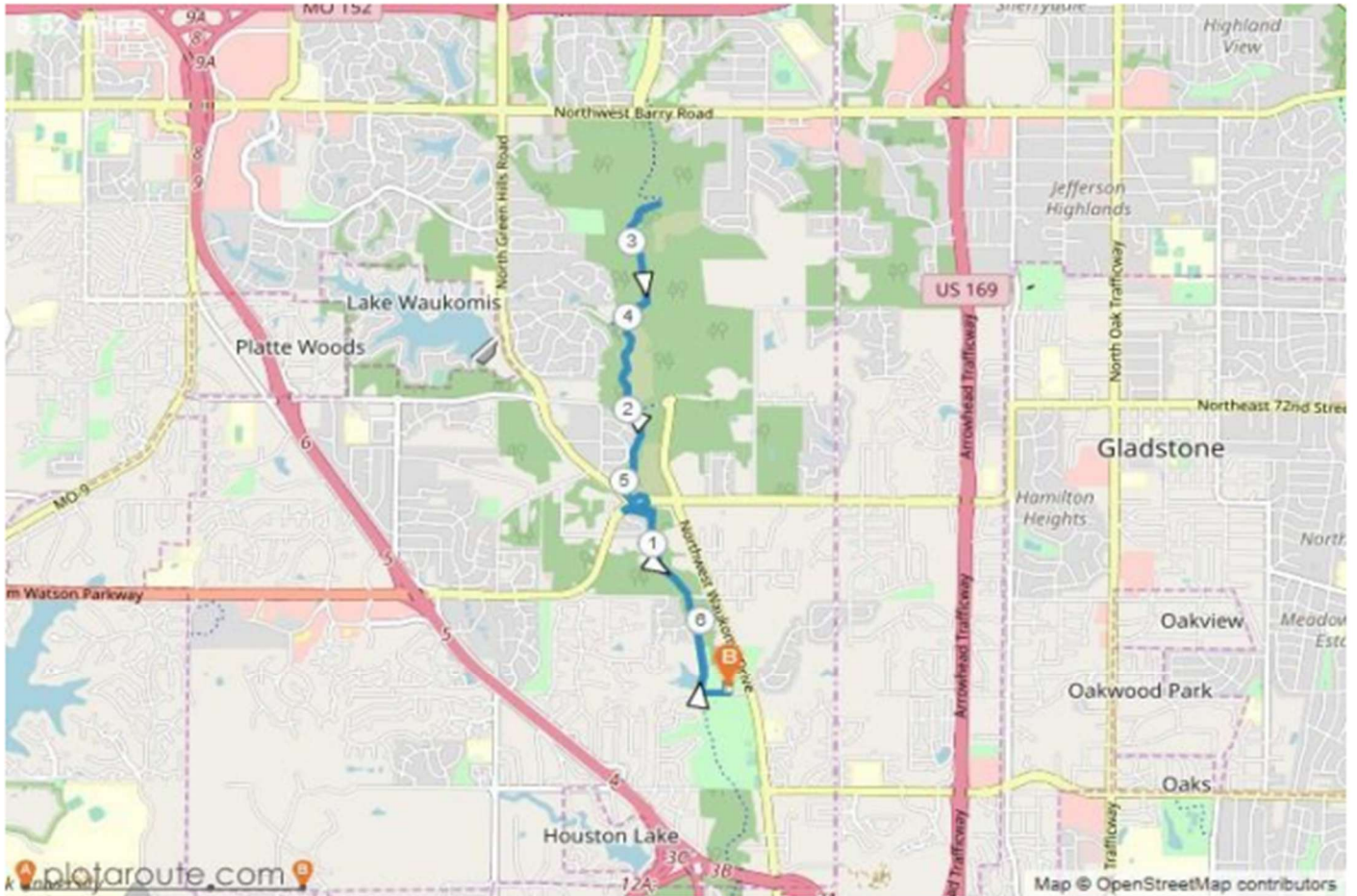
Kansas City, MO – Line Creek 10K YRE 2079 WALK DIRECTIONS

1. Exit community center, turn RIGHT, and walk through the parking lot.
2. Turn LEFT on the drive walking towards Line Creek.
3. At the T, turn RIGHT on the trail. Stay on the trail about 1.2 miles until you reach an accessible path that veers to the right. (Blue accessible sign and yellow bicycle sign indicating a 16% grade.)
4. Follow the trail as it veers downhill to the right.
5. The winding trail will lead you through a tunnel under 68th Street.
6. After going through the tunnel follow the trail uphill to 68th.
7. RIGHT at the fence.
8. You will pass a Speed Limit 40 sign. About 50 yards from the sign veer right on the trail.
9. Continue on the trail until you reach the 7.2 Mile trail post. Walk to the end of the fence and turn around.
10. Retrace the trail by going back through the tunnel.
11. LEFT on the main trail.
12. Continue walking until you reach a “T” in the trail and turn LEFT to return back to the community center and the start point.

Alternate directions if tunnel is muddy and impassable:

1. Return back on the trail until you reach the intersection with the main trail.
2. Veer RIGHT until you reach the 68th St parking lot.
3. RIGHT on the sidewalk at 68th St.
4. Continue to the stop light and pedestrian crossing. Turn LEFT and cross 68th St.
5. Continue on the sidewalk and veer RIGHT back on to the trail. Continue to the first fence and return back to Step 6 in the directions.

Kansas City, MO – Line Creek 10K YRE 2079 WALK DIRECTIONS



The Clay-Platte Trackers of Kansas City hope you enjoyed our walk! Please visit the AVA website (my.ava.org) for information on other walks in the Kansas City area.

Thanks for walking with the Clay-Platte Trackers of Kansas City. Please enjoy our other YREs:

Gladstone, MO – Shoal Creek Trail (Special programs: Par for the Course)

Kansas City, MO – Downtown KCMO (Special programs: Grain Elevator: Monarchs of the Plains, Step to the Beat, Walking With the Wild Things)

Kansas City, MO – Line Creek Trail (Walking With the Wild Things)

Kansas City, MO – Monuments (Special programs: Grain Elevators: Monarchs of the Plains, Par for the Course, Walking With the Wild Things, Walking With America's Veterans)

Kansas City, MO – Westport (Special programs: A-MAZE-ing Labyrinths, Step to the Beat, Walking With America's Veterans)

Liberty, MO – Town (Special programs: Step to the Beat, Walking With America's Veterans)

North Kansas City, MO – NKC Town (Special programs: Grain Elevators, Par for the Course, Step to the Beat, Walking With America's Veterans)

Parkville, MO – English Landing Trail (Special programs: Grain Elevators: Monarchs to the Plains, Par for the Course, Step to the Beat, Walking With America's Veterans)