

**Kawaskum, WI – Milwaukee River, Kewaskum and Parnell IAT Segments (SE-3)**

**Wisconsin Ice Age Trail (WI IAT) Regional AVA Program Y2264**

**Copyright © 2018 – NC Region, AVA 7km,10km,14km,19km,27km,54km,57km,67km**

**This map and directions may only be used in conjunction with a signed American Volkssport Association (AVA) athletic waiver. All other uses are prohibited.**

**IAT Alliance Snapshot:** This route:

Kewaskum Segment: Features the Otten Preserve and its scenic overlooks.

Milwaukee River Segment: Highlights forested woodlands and sunny meadows.

Parnell Segment: This long segment highlights remarkable glacial formations including the Parnell Esker.

**Start/Finish Point:** To parking area on Cty Hwy H., leave Kewaskum South on St. Hwy 45, Left on Cty Hwy H, one parking area is on the South side of the road, on your Right, this is your fallback parking area if the next parking area is full. Start Point: Continue a very short distance and a parking area will be on the Northside of the road, your Left.

**GPS:** 43°29'56.0"N 88°11'26.6"W 43.498897, -88.190707

**Hike Options:** Parking, but no restrooms or water are available at the Start Point, however just North on the trail is a shelter with seasonal restrooms and water. Follow IAT yellow blaze markings.

**7km** Start Point on Northside of Cty Hwy H, Right along the road to the trail on the Westside of the Milwaukee River, turn Left, South on the trail until you reached Prospect Dr. and turn Left. When you reach a parking area where the trail turns Right, away from the road, turn around and return to Start Point..

**10km** Start Point on Northside of Cty Hwy H, Right along the road to the trail on the Westside of the Milwaukee River, turn Left, South on the trail, walk short distance on Prospect Dr., turn Left with trail through Otten Preserve to parking area on Ridge Rd. Turn around and return to Start Point.

**14km** Start Point on Northside of Cty Hwy H, walk to trail on this side (Eastside) of the Milwaukee River, turn Right, North on the trail, passing St Hwy 28 to the split of the Milwaukee River Segment Washington County versus the Fond du Lac County portion, See red and adjacent green dots on map, turn around and return to the Start Point.

**19km** Start Point on Northside of Cty Hwy H, walk to trail on this side (Eastside) of the Milwaukee River, turn Right, North on the trail crossing St Hwy 28 and passing smaller New Fane trails to the right, and continuing into the Kettle Moraine State Forest-Northern Unit until you reach a shelter (shelter no. 2) on your left, approximately 9.5 km from the start point, seasonal restrooms are near shelter. Turn around and return to Start Point..

**27km** Start Point on Northside of Cty Hwy H, walk to trail on this side (Eastside) of the Milwaukee River, turn Right, North on the trail crossing St Hwy 28 and passing smaller New Fane trails to the right, and continuing into the Kettle Moraine State Forest-Northern Unit, passing shelter no. 2 on your left, through Mauthe Lake Recreation Area (seasonal restrooms and water) and continue onto the IAT Parnell Segment, passing some small lakes to reach Cty Hwy SS. At Cty Hwy SS turn around and return to the Start Point.

This route would work well for a Linear Route if two cars were employed at parking areas at both ends, or a driver meets the hiker at the end for a **14km** route (approximately) by utilizing a parking area on Cty Hwy SS just west of the trail.

**54km** Start Point on Northside of Cty Hwy H, walk to trail on this side (Eastside) of the Milwaukee River, turn Right, North on the trail crossing St Hwy 28 and passing smaller New Fane trails to the right, and continuing into the Kettle Moraine State Forest-Northern Unit, passing shelter no. 2 on your left, through Mauthe Lake Recreation Area (seasonal restrooms and water) and continue onto the IAT Parnell Segment, passing Cty Hwy SS, W F V and Scenic Dr. and Cty Hwy U. Option No. 1 continue to Shelter No. 4 turn around and return to Start Point. Option No. 2 just after Cty Hwy U a smaller trail goes to the Right to an observation tower with parking, seasonal restrooms and water. Turn around and return to the Start Point.

This route would also work well for a Linear Route if two cars were employed at parking areas at both ends, or a driver meets the hiker at the end (Option No. 2) for a **27km** route (approximately).

**57km** Start Point on Northside of Cty Hwy H, walk to trail on this side (Eastside) of the Milwaukee River, turn Right, North on the trail crossing St Hwy 28 and passing smaller New Fane trails to the right, and continuing into the Kettle Moraine State Forest-Northern Unit, passing shelter no. 2 on your left, through Mauthe Lake Recreation Area (seasonal restrooms and water) and continue onto the IAT Parnell Segment, passing Cty Hwy SS, W F V and Scenic Dr. and Cty Hwy U, and Shelter No. 4 (seasonal restrooms), to St Hwy 67, the end of the Parnell Segment, and the beginning of the Greenbush Segment. Turn around and return to the Start Point.

This route would also work well for a Linear Route if two cars were employed at parking areas at both ends, or a driver meets the hiker at the end at parking area near St Hwy 67 for a **29km** route (approximately).

**67km** Combined 57km route to the North to St. Hwy 67 to turn around, and the 10km route to the South and West to Ridge Rd. to turn around. This route has the hiker complete the Kewaskum, Milwaukee River and Parnell Segments, in their entirety.

**Alert:** None

**AVA Special Program:** Wisconsin Ice Age Trail (WI IAT) Regional Program.



In Case of emergency, dial 911. For an AVA administrative issue, contact the NC Regional Director Jerry Wilson at (cell) 608-695-6449, leave a message, expect a return call as close to immediately as possible.

**Congratulations!** You have finished this WI IAT route, this is 1 of 16 routes. Don't forget to return to the Online Start Box to check-in within the required timeframe to secure credit for your event and distance books. WI IAT Regional Program credit will be achieved and stored online until all 16 routes have been completed.

This walk is sponsored by the North Central Region of the American Volkssport Association. Please send constructive comments to [NC\\_RD@AVA.org](mailto:NC_RD@AVA.org).



**America's Walking Club!**

# Map 86f

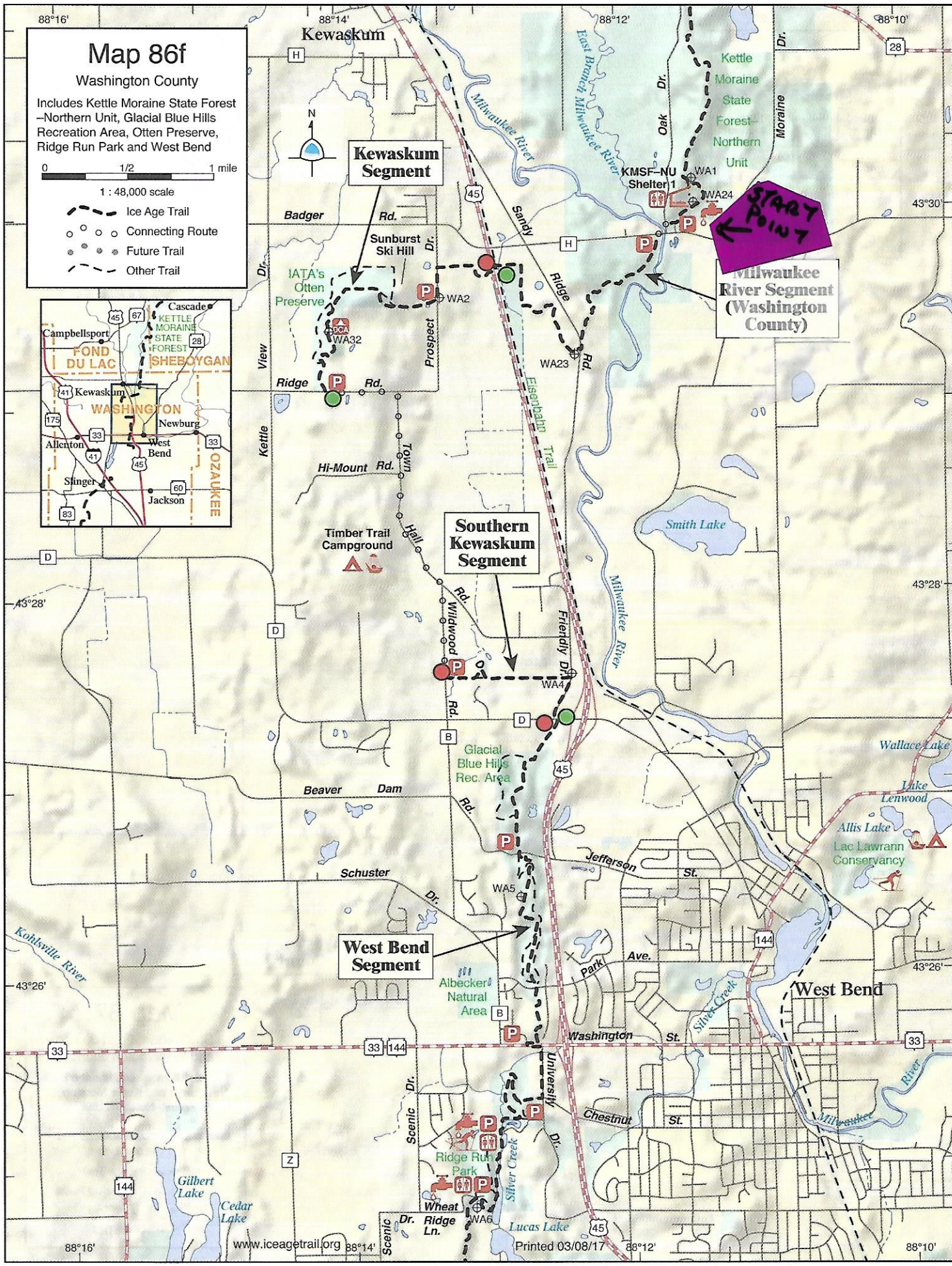
Washington County

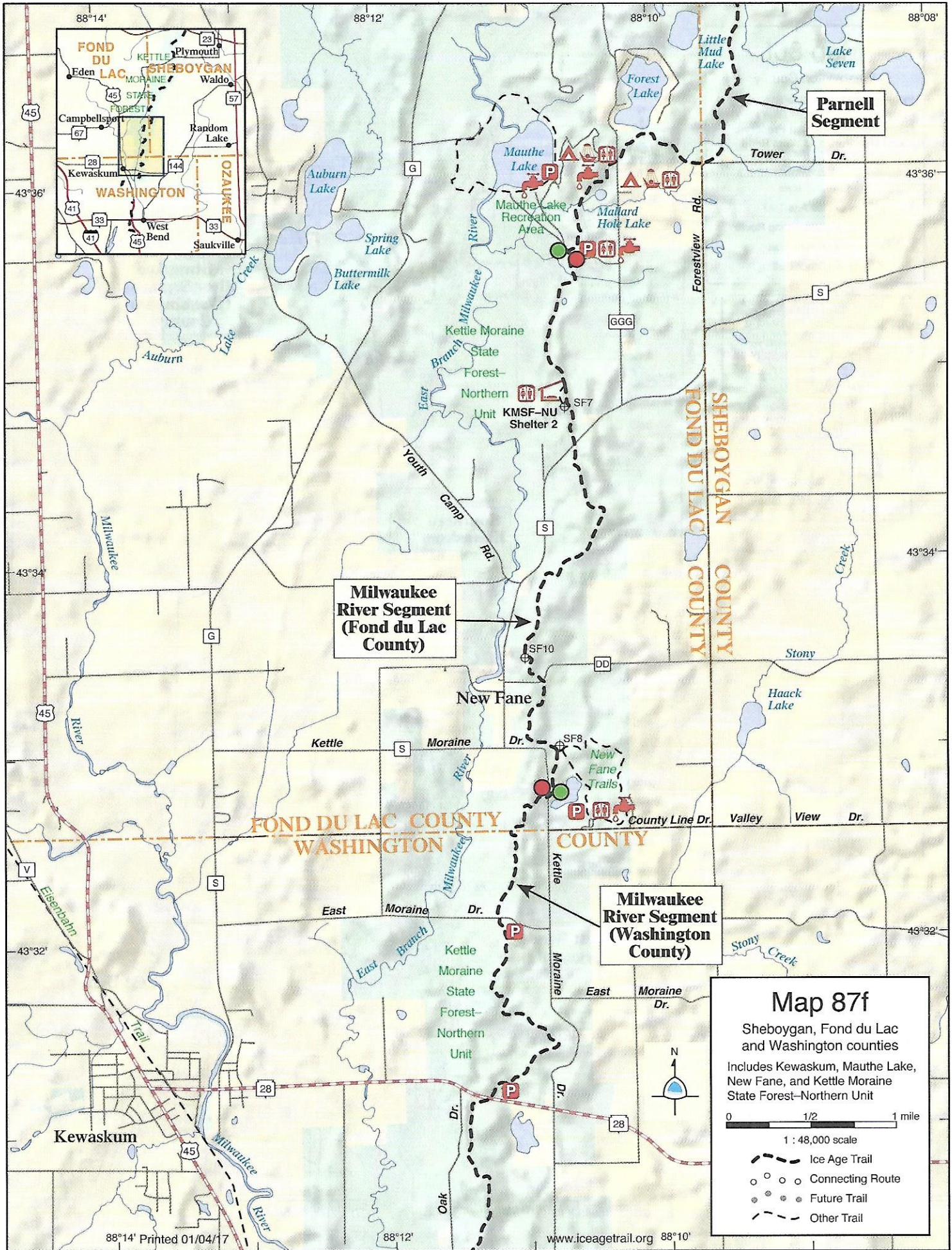
Includes Kettle Moraine State Forest—Northern Unit, Glacial Blue Hills Recreation Area, Otten Preserve, Ridge Run Park and West Bend

0 1/2 1 mile

1 : 48,000 scale

- Ice Age Trail
- Connecting Route
- Future Trail
- Other Trail





**Parnell Segment**

**Milwaukee River Segment (Fond du Lac County)**

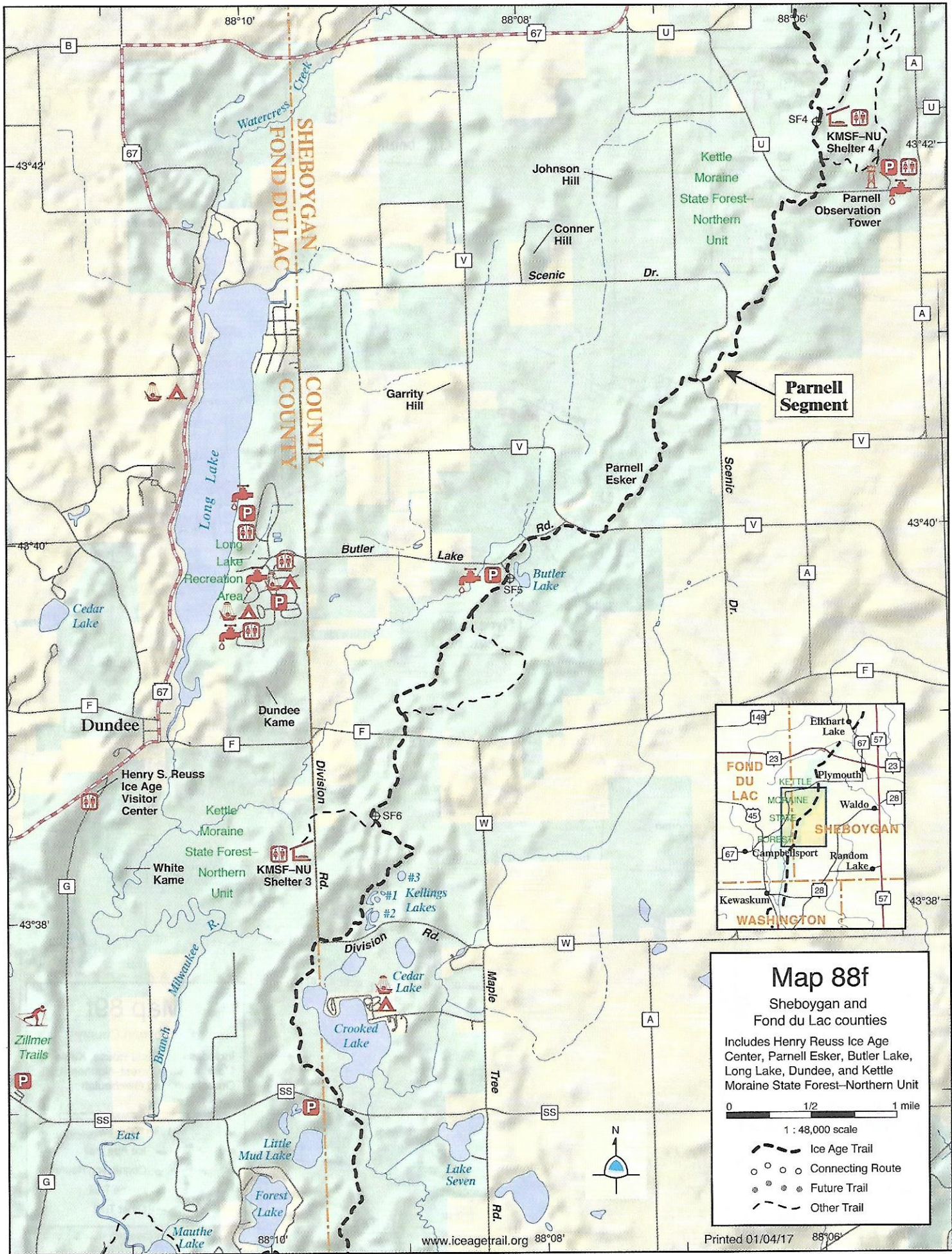
**Milwaukee River Segment (Washington County)**

**Map 87f**  
 Sheboygan, Fond du Lac and Washington counties  
 Includes Kewaskum, Mauthe Lake, New Fane, and Kettle Moraine State Forest-Northern Unit

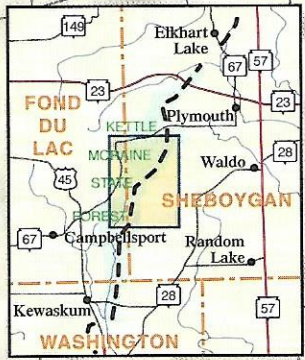
0 1/2 1 mile

1 : 48,000 scale

- Ice Age Trail
- Connecting Route
- Future Trail
- Other Trail



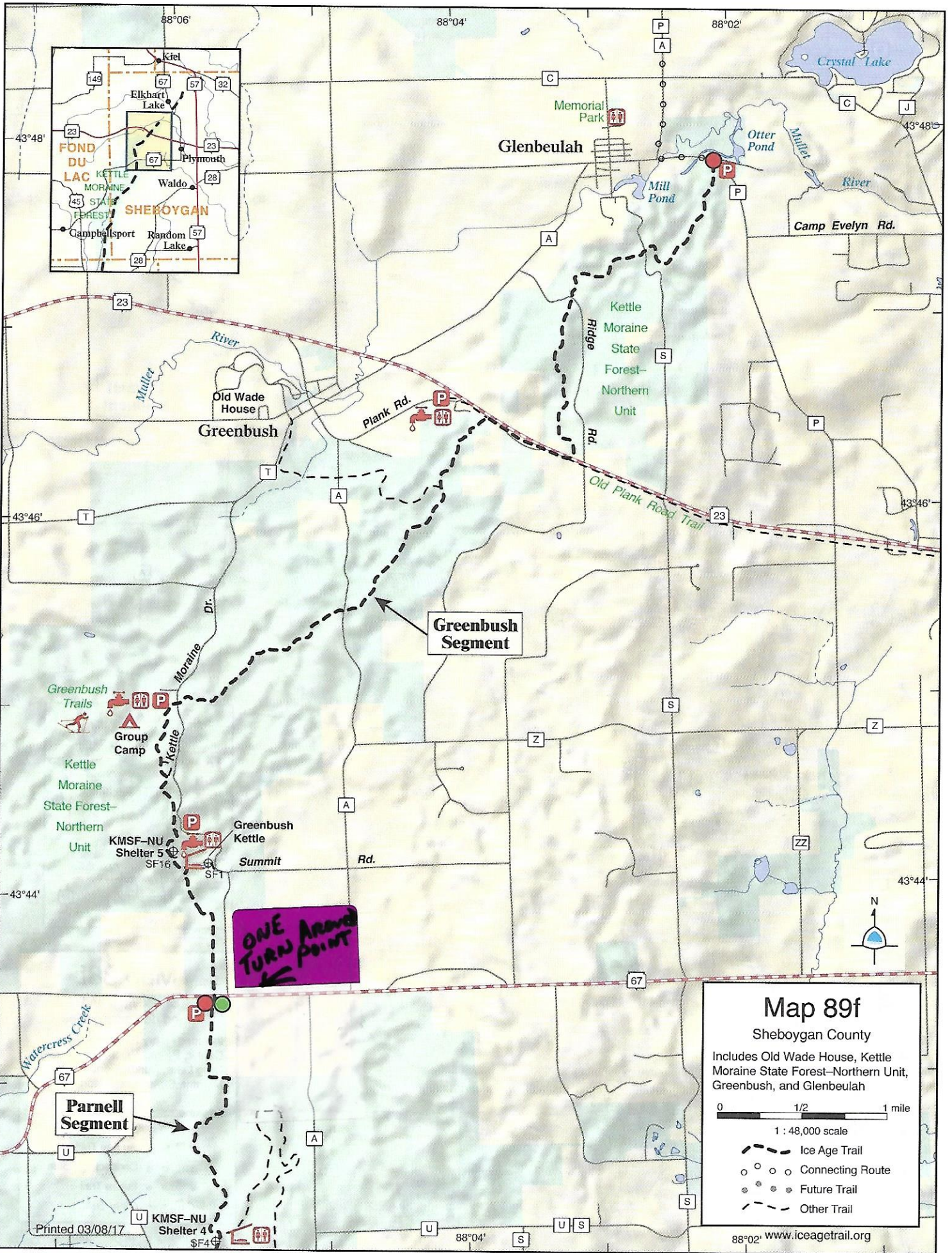
**Parnell Segment**



**Map 88f**  
 Sheboygan and Fond du Lac counties  
 Includes Henry Reuss Ice Age Center, Parnell Esker, Butler Lake, Long Lake, Dundee, and Kettle Moraine State Forest-Northern Unit

0 1/2 1 mile  
 1 : 48,000 scale

- Ice Age Trail
- Connecting Route
- Future Trail
- Other Trail



**Map 89f**  
 Sheboygan County  
 Includes Old Wade House, Kettle Moraine State Forest-Northern Unit, Greenbush, and Glenbeulah

0 1/2 1 mile  
 1 : 48,000 scale

- Ice Age Trail
- Connecting Route
- Future Trail
- Other Trail

Printed 03/08/17

88°02' www.iceagetrail.org

## Things to Know - Wisconsin Ice Age Trail (WI IAT) AVA Regional Program

WI IAT AVA Segments: Many Start Point locations have seasonal restrooms and water, some do not. Please read directions in advance and prepare yourself.

Hiking with another person is recommended. These routes were established under the AVA Regional Program "Wisconsin Ice Age Trail" in conjunction with the Wisconsin Ice Age Trail Alliance. These 16 routes are "hikes" rather than walks; although portions of a few routes can be rated below 3C when on bike paths and roads or in urban areas, portions of some could be considered rated 4D.

Drinking water, insect repellent, hiking boots, sunscreen and a hat/cap may be necessary, depending when the trail is hiked. Many will want a walking stick. Checking for ticks after completing a hike is suggested.

**Property Types:** The Ice Age National Scenic Trail is uniformly marked with yellow blazes, but as a "partnership" project the land ownership and management for the Trail are anything but consistent. The Trail crosses a wide variety of property types, including private lands owned and managed by municipal, county, state and federal agencies. Generally speaking, lands open to public access are shown on maps with green shading. The patchwork of land management also yields different regulations for camping, hiking with pets, parking and so on.

The IAT segments chosen for the Wisconsin Ice Age Trail Distance AVA Regional Program for the most part avoid "connecting routes"; however, some are included but walkers have the option to skip these portions by driving from one trail segment to another. *Disclaimer:* Roads on connecting routes, while legally open to pedestrians, may not have been designed for safe use by pedestrians (in contrast to Ice Age Trail segments). By identifying these routes, neither the Ice Age Trail Alliance, National Park Service, Wisconsin Department of Natural Resources nor the local governmental body, or the American Volkssporting Association, are implying any guarantee about their safety or suitability for Ice Age Trail hikers/walkers.

While AVA participants will be given a route map and limited instructions, to make the participants IAT experience most fulfilling we suggest AVA Regional Event participants consider purchasing the IATA Trail Guidebook for more detail about each segment. The IATA also has a three-ring binder Atlas that has larger segment maps (8.5" x 11") for all segments statewide (over 100 maps). These maps were made available by the IATA for AVA planning use.

IATA provided maps include a green dot and red dot where the local IATA chapters designate the start and end of each segment. These markings rarely coincide with the designated AVA route because we chose to start hikers at locations with parking and allowed hikers to go one direction, the other or both. Hiking both allows longer distance hiking passing your vehicle midway.

When walking, generally follow the yellow blaze IAT signs. Participants will also encounter other IATA signage marking the trail. Refer to the provided map frequently, especially related to leaving parking areas, trail turns and when crossing roads or following roads.

**Safety:** Personal Safety is a concern when one ventures to unfamiliar places. Always use common sense and take precautions. It is best not to hike alone. Following are some IATA inspired suggestions:

- Leave a trip itinerary with family or friends and stay in contact while away.
- Consider medications that may be needed when leaving home.
- Secure your vehicle and leave nothing in plain sight.
- Carry a cell phone, but realize there may be "no service" portions of trails.
- Avoid camping within a half-mile of road crossings.
- Do not tell strangers where you are headed or plan to camp.
- If you encounter a suspicious person, consider moving to another location.
- Always trust your instincts.
- Take precautions to avoid mosquito & tick-borne illnesses, including insect repellent. Light colors make ticks easier to find. Promptly remove ticks!
- Consider the various Wisconsin hunting seasons when dressing to walk, be visible, "Blaze Orange" and other bright colors are encouraged especially walking September – December.

Examples of IAT Signage:

