

This map and directions may only be used in conjunction with a signed American Volkssport Association (AVA) athletic waiver. All other uses are prohibited.

Start/Finish Point: To Buttercup Dr.: From I-39 exit #124 (Coloma) and follow St Hwy 21 east 1.4 miles. At 6th Ave. turn left and go 2.6 miles to Buttercup Dr. Turn right and go east 0.8 miles to the parking area, south side of road. For a 6km option, when following 6th Ave., turn right on Cottonville Ave. and left on 6th Lane to a small parking area on your right, before you reach Chicago Rd.

GPS: 44.075245, -89.485163 N2694 Evergreen Path, Hancock

Hike Options: This route is a rare WI IAT route that follows an established IAT route as designed, starting at the map's green dot on Buttercup Drive to Cumberland Ave. for a 12 plus km hike. Adding a return to your vehicle will total 25 km. If being met by a driver along this linear route, a parking lot exists approximately 11km from the start point on St. Hwy 21. For an alternative 6 km option, parking on 6th Lane, and hiking turning south on the trail, track your distance walking 1.8 miles along the trail, turn and return to your vehicle, you will enjoy Mekan Springs to your left, but this shorter distance will not include the Mekan River State Fishery Area.

This WI IAT route being a small portion of the 1,000 mile plus IAT system, ends at Cumberland Ave. at the South end, and Buttercup Dr. at the North end. Follow the map you downloaded. Hikers will travel following yellow blaze trail markers. Starting at Buttercup Dr. hikers will begin in a southerly direction. If hiking to the Cumberland Ave. turn around, or the parking area on St. Hwy 21, a short distance, approximately 2/3 km, will be along a roadway, on 9th Ave.

Alert: No water or restrooms exist on this IAT segment. Coloma is the closest town with local vendors.

AVA Special Program: Wisconsin Ice Age Trail (WI IAT) Regional Program.



In Case of emergency, dial 911. For an AVA administrative issue, contact the NC Regional Director Jerry Wilson at (cell) 608-695-6449, leave a message, expect a return call as close to immediately as possible.

Congratulations! You have finished this WI IAT route, this is 1 of 16 routes. Don't forget to return to the Online Start Box to check-in within the required timeframe to secure credit for your event and distance books. WI IAT Regional Program credit will be achieved and stored online until all 16 routes have been completed.

This walk is sponsored by the North Central Region of the American Volkssport Association



America's Walking Club!


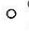


Map 52f

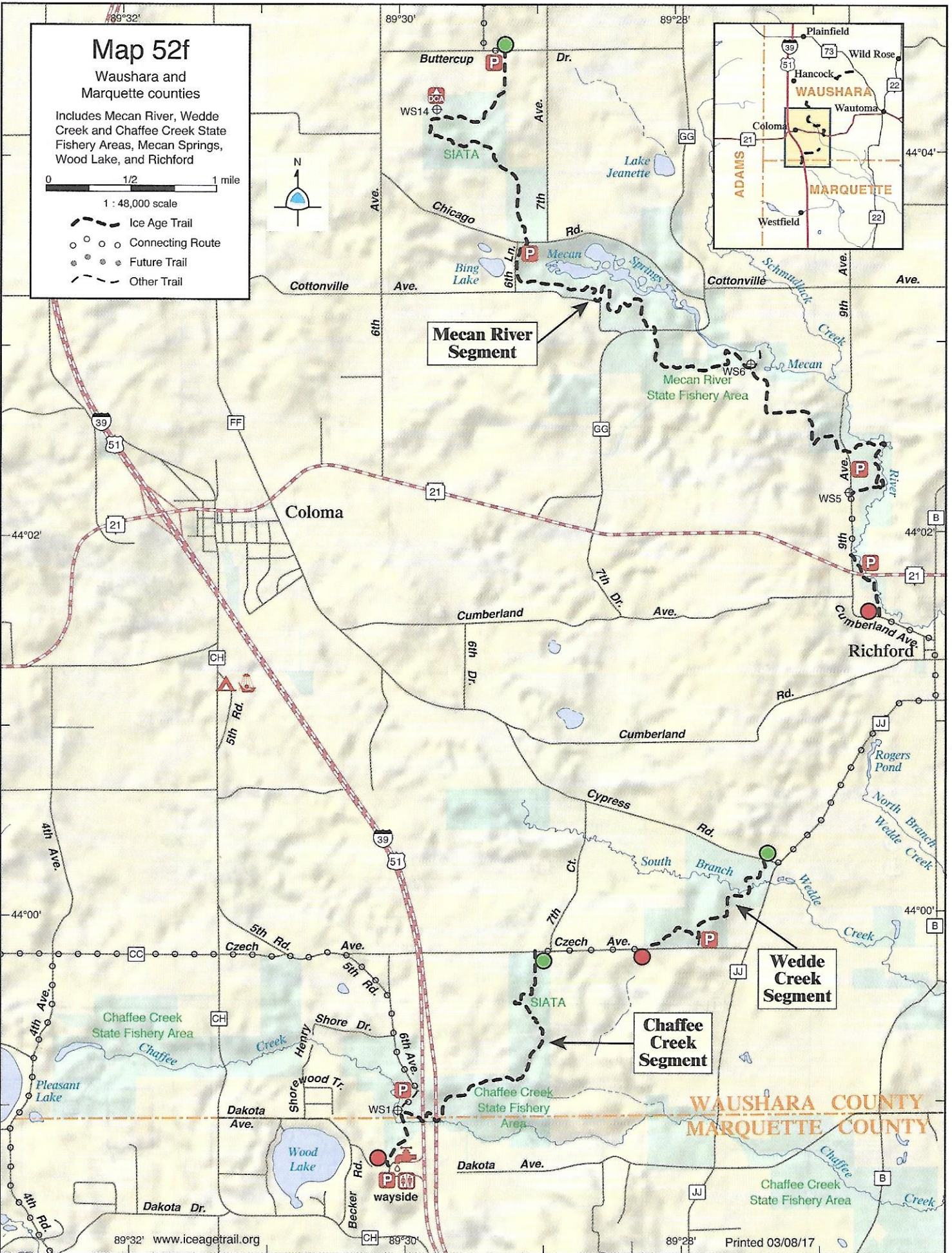
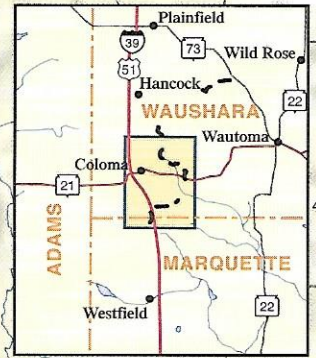
Waushara and Marquette counties

Includes Mecan River, Wedde Creek and Chaffee Creek State Fishery Areas, Mecan Springs, Wood Lake, and Richford

0 1/2 1 mile

1 : 48,000 scale

-  Ice Age Trail
-  Connecting Route
-  Future Trail
-  Other Trail



Mecan River Segment

Wedde Creek Segment

Chaffee Creek Segment

**WAUSHARA COUNTY
MARQUETTE COUNTY**

Things to Know - Wisconsin Ice Age Trail (WI IAT) AVA Regional Program

WI IAT AVA Segments: Many Start Point locations have seasonal restrooms and water, some do not. Please read directions in advance and prepare yourself.

Hiking with another person is recommended. These routes were established under the AVA Regional Program "Wisconsin Ice Age Trail" in conjunction with the Wisconsin Ice Age Trail Alliance. These 16 routes are "hikes" rather than walks; although portions of a few routes can be rated below 3C when on bike paths and roads or in urban areas, portions of some could be considered rated 4D.

Drinking water, insect repellent, hiking boots, sunscreen and a hat/cap may be necessary, depending when the trail is hiked. Many will want a walking stick. Checking for ticks after completing a hike is suggested.

Property Types: The Ice Age National Scenic Trail is uniformly marked with yellow blazes, but as a "partnership" project the land ownership and management for the Trail are anything but consistent. The Trail crosses a wide variety of property types, including private lands owned and managed by municipal, county, state and federal agencies. Generally speaking, lands open to public access are shown on maps with green shading. The patchwork of land management also yields different regulations for camping, hiking with pets, parking and so on.

The IAT segments chosen for the Wisconsin Ice Age Trail Distance AVA Regional Program for the most part avoid "connecting routes"; however, some are included but walkers have the option to skip these portions by driving from one trail segment to another. *Disclaimer:* Roads on connecting routes, while legally open to pedestrians, may not have been designed for safe use by pedestrians (in contrast to Ice Age Trail segments). By identifying these routes, neither the Ice Age Trail Alliance, National Park Service, Wisconsin Department of Natural Resources nor the local governmental body, or the American Volkssporting Association, are implying any guarantee about their safety or suitability for Ice Age Trail hikers/walkers.

While AVA participants will be given a route map and limited instructions, to make the participants IAT experience most fulfilling we suggest AVA Regional Event participants consider purchasing the IATA Trail Guidebook for more detail about each segment. The IATA also has a three-ring binder Atlas that has larger segment maps (8.5" x 11") for all segments statewide (over 100 maps). These maps were made available by the IATA for AVA planning use.

IATA provided maps include a green dot and red dot where the local IATA chapters designate the start and end of each segment. These markings rarely coincide with the designated AVA route because we chose to start hikers at locations with parking and allowed hikers to go one direction, the other or both. Hiking both allows longer distance hiking passing your vehicle midway.

When walking, generally follow the yellow blaze IAT signs. Participants will also encounter other IATA signage marking the trail. Refer to the provided map frequently, especially related to leaving parking areas, trail turns and when crossing roads or following roads.

Safety: Personal Safety is a concern when one ventures to unfamiliar places. Always use common sense and take precautions. It is best not to hike alone. Following are some IATA inspired suggestions:

- Leave a trip itinerary with family or friends and stay in contact while away.
- Consider medications that may be needed when leaving home.
- Secure your vehicle and leave nothing in plain sight.
- Carry a cell phone, but realize there may be "no service" portions of trails.
- Avoid camping within a half-mile of road crossings.
- Do not tell strangers where you are headed or plan to camp.
- If you encounter a suspicious person, consider moving to another location.
- Always trust your instincts.
- Take precautions to avoid mosquito & tick-borne illnesses, including insect repellent. Light colors make ticks easier to find. Promptly remove ticks!
- Consider the various Wisconsin hunting seasons when dressing to walk, be visible, "Blaze Orange" and other bright colors are encouraged especially walking September – December.

Examples of IAT Signage:

