

Eau Claire River Preserve, WI – Dells of Eau Claire, Thornapple Creek and Ringle IAT Segments (NE-1)

Wisconsin Ice Age Trail (WI IAT) Regional AVA Program Y2269

Copyright © 2018 – NC Region, AVA

**8 km, 11km, 43km, 51km
Linear Routes: 6km, 17km**

This map and directions may only be used in conjunction with a signed American Volkssport Association (AVA) athletic waiver. All other uses are prohibited.

IAT Alliance Snapshot: This route:

Dells of Eau Claire Segment shows off one of the most dramatic sites on the entire IAT.

Thornapple Creek Segment crosses a small creek in a quiet, primitive area.

Ringle Segment traverses the terminal moraine of Green Bay Lobe and Prominently features kames, kettles and erratics.

Start/Finish Point: To Parking area on Cty Hwy Z, the end of the Dells of Eau Claire Segment (Red Dot) and the start of the Thornapple Creek segment (Green Dot). From Wausau drive 11 miles on Cty Hwy Y until Cty Hwy Z joins Cty Hwy Y. Stay on Cty Hwy Z to parking area along Cty Hwy Z BEFORE reaching Eau Claire River.

GPS: 44°59'11.8"N 89°21'25.8"W 44.986603, -89.357160

Hike Options: Parking is available at the Start Point. Seasonal restrooms and water are available 3.5km to the North in the Dells of the Eau Claire County Park. Follow IAT yellow blaze markings.

8km: Follow the IAT North. Not far along the Eau Claire River will be on your left-side. Follow the IAT to the start of this segment passing through the County Park (seasonal restrooms and water) to Sportsman Dr. Turn around and return to Start Point.

11km: South to end of Thornapple Creek Segment (Green Dot to Red Dot and return). Follow Cty Hwy Z west to Thornapple Creek Rd., turn Left and follow South to where trail leaves the road. The last 3-plus km follows Fire Line Rd. See if you can spot the Fire Tower to your left side as you approach Cty Hwy N. At Cty Hwy N turn around, return to Start Point.

A Linear Route of 6km is possible with two vehicles or a Hiker met by a driver at the end of the route on Cty Hwy N.


43km: South to end of Thornapple Creek Segment (Green Dot to Red Dot). Follow Cty Hwy Z west to Thornapple Creek Rd., Turn Left and follow South to where trail leaves the road and follow IAT to the point it intersects the Mountain-Bay State Trail. Turn Left, East and follow to end of Ringle Segment in Hatley, WI. Restrooms and water available at the Hatley Library during open hours. Turn around and return to Start Point.

A Linear Route of 22km is possible by following this route (Thornapple Creek and Ringle IAT Segments) to the IAT segment end in Hatley, WI if two vehicles are used or a driver meets the hiker at the parking area in Hatley. Parking area is at the village library adjacent to the IAT.

51km: Combine the 8km route to the North and return, passing the Start Point, then follow the 43km route to the South, and later East, and return to Start Point.

Alert: None.

AVA Special Program: Wisconsin Ice Age Trail (WI IAT) Regional Program.



In Case of emergency, dial 911. For an AVA administrative issue, contact the NC Regional Director Jerry Wilson at (cell) 608-695-6449, leave a message, expect a return call as close to immediately as possible.

Congratulations! You have finished this WI IAT route, this is 1 of 16 routes. Don't forget to return to the Online Start Box to check-in within the required timeframe to secure credit for your event and distance books. WI IAT Regional Program credit will be achieved and stored online until all 16 routes have been completed.

This walk is sponsored by the North Central Region of the American Volkssport Association. Please send constructive comments to NC_RD@AVA.org.



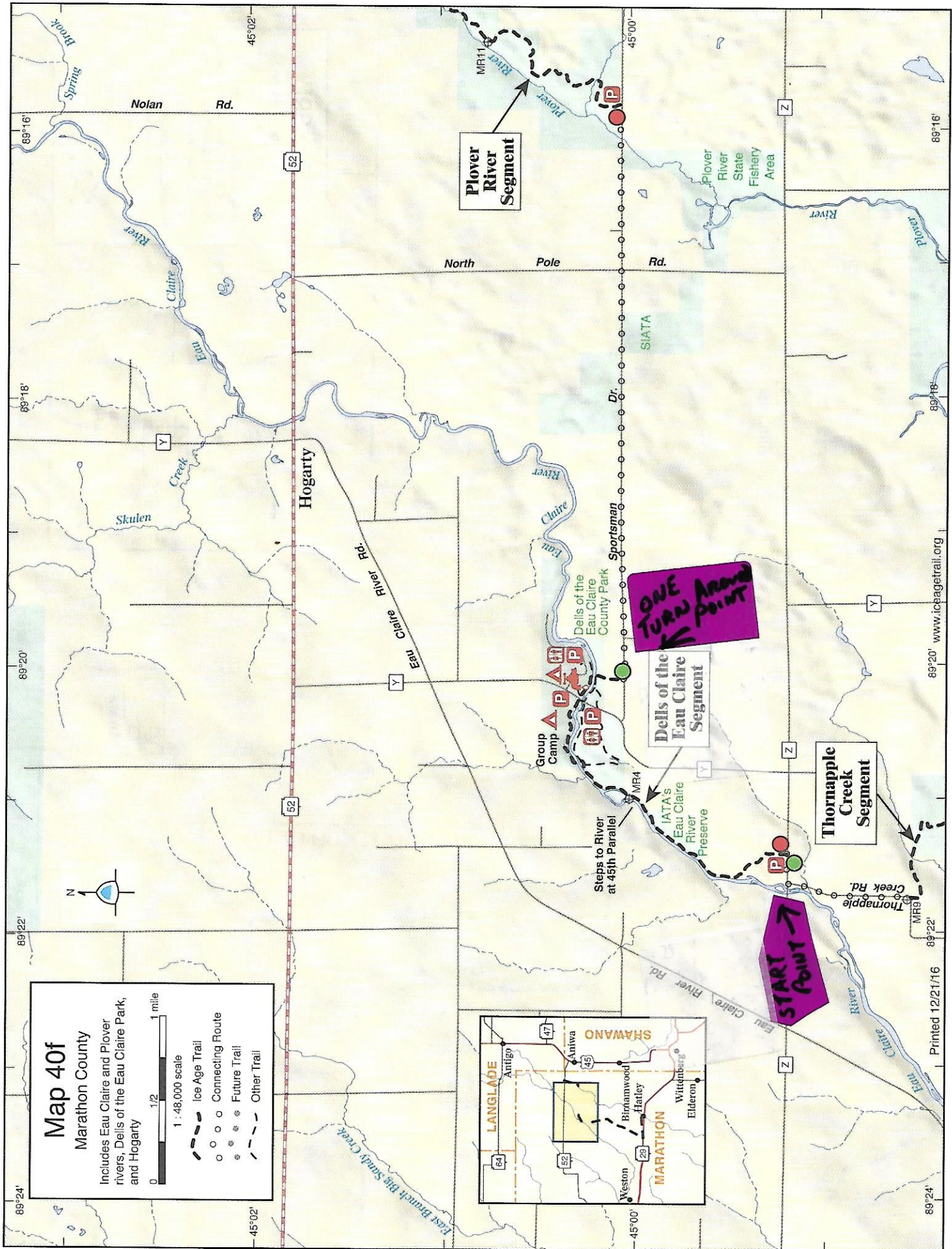
Fun, Fitness, Friendship



SANCTIONED EVENT

Eligible for credit toward IVV Achievement Awards

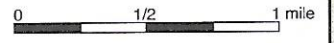
America's Walking Club!



Map 41f

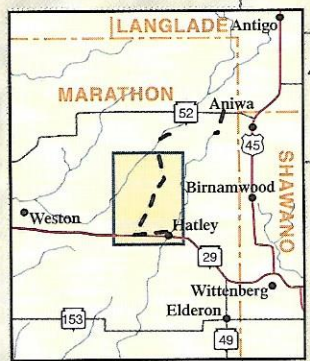
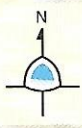
Marathon County

Includes Eau Claire River, Mountain Bay State Trail, Ringle, and Hatley

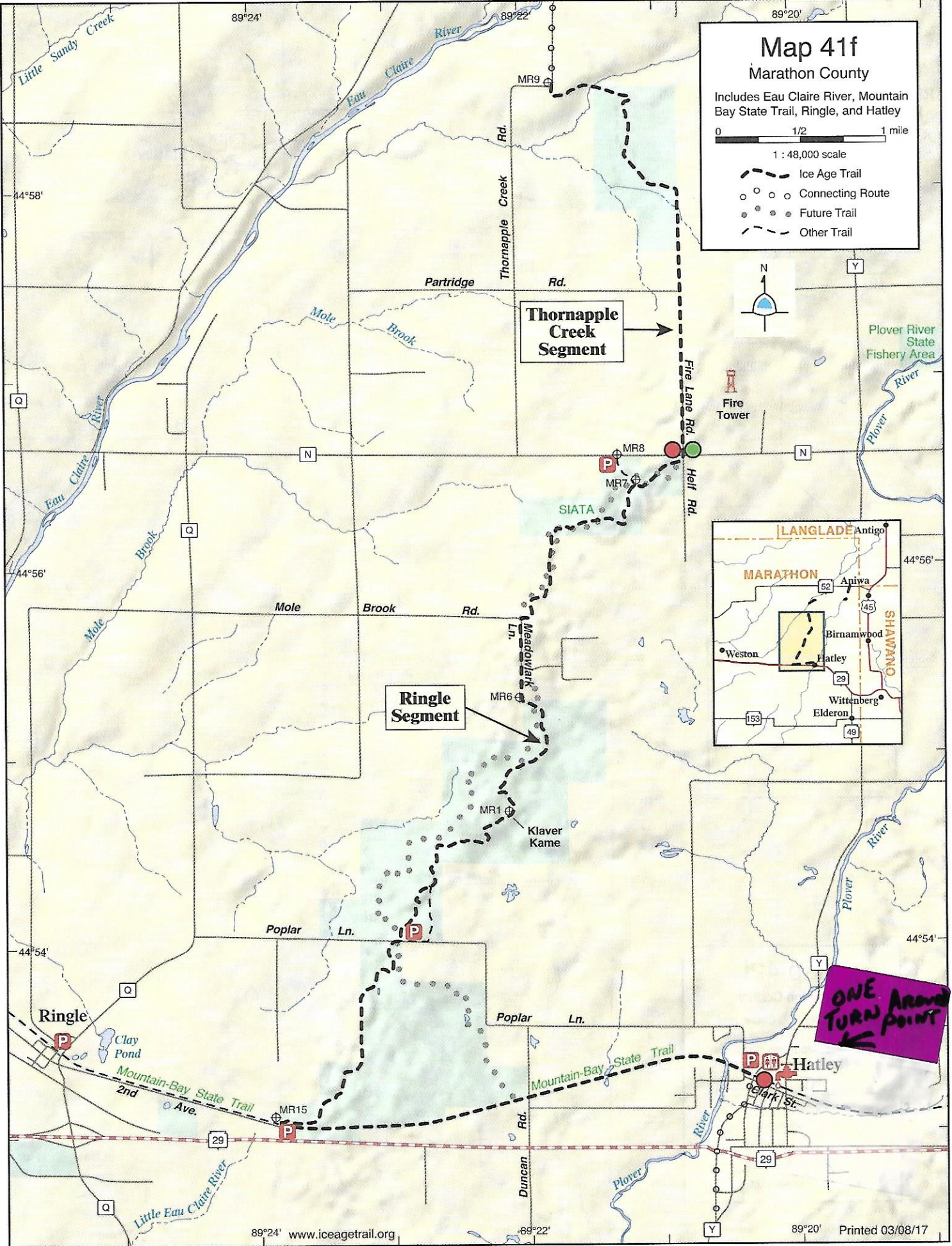


1 : 48,000 scale

- Ice Age Trail
- Connecting Route
- Future Trail
- Other Trail



ONE TURN AROUND POINT



Things to Know - Wisconsin Ice Age Trail (WI IAT) AVA Regional Program

WI IAT AVA Segments: Many Start Point locations have seasonal restrooms and water, some do not. Please read directions in advance and prepare yourself.

Hiking with another person is recommended. These routes were established under the AVA Regional Program "Wisconsin Ice Age Trail" in conjunction with the Wisconsin Ice Age Trail Alliance. These 16 routes are "hikes" rather than walks; although portions of a few routes can be rated below 3C when on bike paths and roads or in urban areas, portions of some could be considered rated 4D.

Drinking water, insect repellent, hiking boots, sunscreen and a hat/cap may be necessary, depending when the trail is hiked. Many will want a walking stick. Checking for ticks after completing a hike is suggested.

Property Types: The Ice Age National Scenic Trail is uniformly marked with yellow blazes, but as a "partnership" project the land ownership and management for the Trail are anything but consistent. The Trail crosses a wide variety of property types, including private lands owned and managed by municipal, county, state and federal agencies. Generally speaking, lands open to public access are shown on maps with green shading. The patchwork of land management also yields different regulations for camping, hiking with pets, parking and so on.

The IAT segments chosen for the Wisconsin Ice Age Trail Distance AVA Regional Program for the most part avoid "connecting routes"; however, some are included but walkers have the option to skip these portions by driving from one trail segment to another. *Disclaimer:* Roads on connecting routes, while legally open to pedestrians, may not have been designed for safe use by pedestrians (in contrast to Ice Age Trail segments). By identifying these routes, neither the Ice Age Trail Alliance, National Park Service, Wisconsin Department of Natural Resources nor the local governmental body, or the American Volkssporting Association, are implying any guarantee about their safety or suitability for Ice Age Trail hikers/walkers.

While AVA participants will be given a route map and limited instructions, to make the participants IAT experience most fulfilling we suggest AVA Regional Event participants consider purchasing the IATA Trail Guidebook for more detail about each segment. The IATA also has a three-ring binder Atlas that has larger segment maps (8.5" x 11") for all segments statewide (over 100 maps). These maps were made available by the IATA for AVA planning use.

IATA provided maps include a green dot and red dot where the local IATA chapters designate the start and end of each segment. These markings rarely coincide with the designated AVA route because we chose to start hikers at locations with parking and allowed hikers to go one direction, the other or both. Hiking both allows longer distance hiking passing your vehicle midway.

When walking, generally follow the yellow blaze IAT signs. Participants will also encounter other IATA signage marking the trail. Refer to the provided map frequently, especially related to leaving parking areas, trail turns and when crossing roads or following roads.

Safety: Personal Safety is a concern when one ventures to unfamiliar places. Always use common sense and take precautions. It is best not to hike alone. Following are some IATA inspired suggestions:

- Leave a trip itinerary with family or friends and stay in contact while away.
- Consider medications that may be needed when leaving home.
- Secure your vehicle and leave nothing in plain sight.
- Carry a cell phone, but realize there may be "no service" portions of trails.
- Avoid camping within a half-mile of road crossings.
- Do not tell strangers where you are headed or plan to camp.
- If you encounter a suspicious person, consider moving to another location.
- Always trust your instincts.
- Take precautions to avoid mosquito & tick-borne illnesses, including insect repellent. Light colors make ticks easier to find. Promptly remove ticks!
- Consider the various Wisconsin hunting seasons when dressing to walk, be visible, "Blaze Orange" and other bright colors are encouraged especially walking September – December.

Examples of IAT Signage:

