

**Greenbush , WI – Greenbush and Parnell IAT Segments (SE-1)**

**Wisconsin Ice Age Trail (WI IAT) Regional AVA Program Y2285**

**Copyright © 2018 – NC Region, AVA**

**6 km, 10km, 18km, 28km  
Linear Route: 15 km**

**This map and directions may only be used in conjunction with a signed American Volkssport Association (AVA) athletic waiver. All other uses are prohibited.**

**IAT Alliance Snapshot:** This route:

Greenbush Segment dips into deep valleys and traverses ridges through forests of basswood, oak, maple and pine. Parnell Segment highlights remarkable glacial formations including the world-famous Parnell Esker

**Start/Finish Point:** To Greenbush, WI, from Madison, drive north on US Hwy 151 to Fond du Lac, WI. Right, east on ST Hwy 23 to Plank Rd. Right to parking area. Parking area is located 3/10 of a mile west of IAT.

**GPS:** 43°46'33.0"N 88°03'56.1"W 43.775833, -88.065569

**Hike Options:** Parking, seasonal restrooms and water available at Start Point. Follow IAT yellow blaze markings.

**6km:** Right along St Hwy 23 on Old Plank Rd. Trail to join IAT heading East, cross St. Hwy 23 following trail North. For short route, 6 km, reaching the Ridge Rd. intersection, turn around and return to Start Point.

**10km:** Right along St Hwy 23 on Old Plank Rd. Trail to join IAT heading East, cross St. Hwy 23 following IAT North. Continue to end of Greenbush IAT Segment at parking area just off Cty Hwy P. (Red Dot on map.)

**18km:** Right along St Hwy 23 on Old Plank Rd. Trail to join IAT. Turn Right, South, on IAT. (Seasonal restrooms and water mid-route near shelter No. 5). Follow the IAT and map crossing St. Hwy 67, passing the start of the Greenbush IAT Segment (the Green Dot) and the beginning of the Parnell IAT Segment (Red Dot). Continue about 2 km to the Kettle Moraine St. Forest- Northern Unit Shelter No. 4 (seasonal restrooms.) Turn around and return to Start Point. (Seasonal water is also located off minor trails nearby, see map.)

**28km:** Combined, complete the 10km route North, out and back, and the 18km route South, out and back.

**A Linear route of 15km** is possible if two vehicles are used or a driver meets the hiker at the parking area near St. Hwy 67 (see Green Dot on map).

**Alert:** None.

**AVA Special Program:** Wisconsin Ice Age Trail (WI IAT) Regional Program.



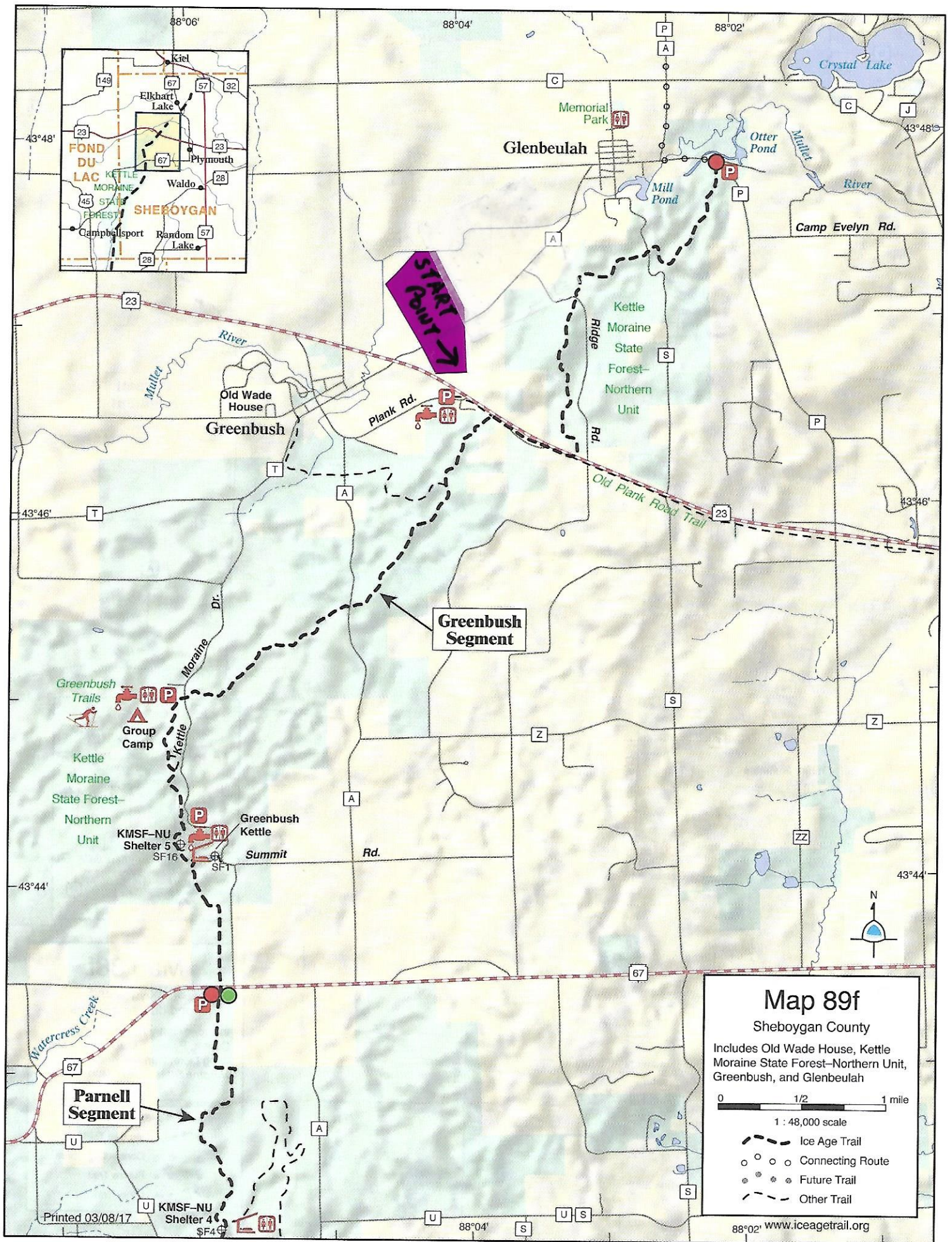
In Case of emergency, dial 911. For an AVA administrative issue, contact the NC Regional Director Jerry Wilson at (cell) 608-695-6449, leave a message, expect a return call as close to immediately as possible.

***Congratulations!*** You have finished this WI IAT route, this is 1 of 16 routes. Don't forget to return to the Online Start Box to check-in within the required timeframe to secure credit for your event and distance books. WI IAT Regional Program credit will be achieved and stored online until all 16 routes have been completed.

This walk is sponsored by the North Central Region of the American Volkssport Association. Please send constructive comments to [NC\\_RD@AVA.org](mailto:NC_RD@AVA.org).



**America's Walking Club!**



## Things to Know - Wisconsin Ice Age Trail (WI IAT) AVA Regional Program

WI IAT AVA Segments: Many Start Point locations have seasonal restrooms and water, some do not. Please read directions in advance and prepare yourself.

Hiking with another person is recommended. These routes were established under the AVA Regional Program "Wisconsin Ice Age Trail" in conjunction with the Wisconsin Ice Age Trail Alliance. These 16 routes are "hikes" rather than walks; although portions of a few routes can be rated below 3C when on bike paths and roads or in urban areas, portions of some could be considered rated 4D.

Drinking water, insect repellent, hiking boots, sunscreen and a hat/cap may be necessary, depending when the trail is hiked. Many will want a walking stick. Checking for ticks after completing a hike is suggested.

**Property Types:** The Ice Age National Scenic Trail is uniformly marked with yellow blazes, but as a "partnership" project the land ownership and management for the Trail are anything but consistent. The Trail crosses a wide variety of property types, including private lands owned and managed by municipal, county, state and federal agencies. Generally speaking, lands open to public access are shown on maps with green shading. The patchwork of land management also yields different regulations for camping, hiking with pets, parking and so on.

The IAT segments chosen for the Wisconsin Ice Age Trail Distance AVA Regional Program for the most part avoid "connecting routes"; however, some are included but walkers have the option to skip these portions by driving from one trail segment to another. *Disclaimer:* Roads on connecting routes, while legally open to pedestrians, may not have been designed for safe use by pedestrians (in contrast to Ice Age Trail segments). By identifying these routes, neither the Ice Age Trail Alliance, National Park Service, Wisconsin Department of Natural Resources nor the local governmental body, or the American Volkssporting Association, are implying any guarantee about their safety or suitability for Ice Age Trail hikers/walkers.

While AVA participants will be given a route map and limited instructions, to make the participants IAT experience most fulfilling we suggest AVA Regional Event participants consider purchasing the IATA Trail Guidebook for more detail about each segment. The IATA also has a three-ring binder Atlas that has larger segment maps (8.5" x 11") for all segments statewide (over 100 maps). These maps were made available by the IATA for AVA planning use.

IATA provided maps include a green dot and red dot where the local IATA chapters designate the start and end of each segment. These markings rarely coincide with the designated AVA route because we chose to start hikers at locations with parking and allowed hikers to go one direction, the other or both. Hiking both allows longer distance hiking passing your vehicle midway.

When walking, generally follow the yellow blaze IAT signs. Participants will also encounter other IATA signage marking the trail. Refer to the provided map frequently, especially related to leaving parking areas, trail turns and when crossing roads or following roads.

**Safety:** Personal Safety is a concern when one ventures to unfamiliar places. Always use common sense and take precautions. It is best not to hike alone. Following are some IATA inspired suggestions:

- Leave a trip itinerary with family or friends and stay in contact while away.
- Consider medications that may be needed when leaving home.
- Secure your vehicle and leave nothing in plain sight.
- Carry a cell phone, but realize there may be "no service" portions of trails.
- Avoid camping within a half-mile of road crossings.
- Do not tell strangers where you are headed or plan to camp.
- If you encounter a suspicious person, consider moving to another location.
- Always trust your instincts.
- Take precautions to avoid mosquito & tick-borne illnesses, including insect repellent. Light colors make ticks easier to find. Promptly remove ticks!
- Consider the various Wisconsin hunting seasons when dressing to walk, be visible, "Blaze Orange" and other bright colors are encouraged especially walking September – December.

Examples of IAT Signage:

