

# Frankenmuth Walks – Y2382

**Table of Contents**

**Driving Directions**

**Additional Information**

**6k Walk Directions**

**6k Map**

**10k Walk Directions**

**10k Map**

**Frankenmuth Follow Up Information**

## Driving Directions to Frankenmuth Michigan

Traveling from the south or from the north in Michigan on I-75

1. Take exit 136 in Birch Run Township.
2. Follow M-83 North for 6.5 miles.
3. Start point is **Bronner's Christmas Wonderland** in front of the **Silent Night Chapel, 25 Christmas Lane, Frankenmuth MI 48734**. Free Parking. Behind Bronner's near Weiss St since walk starts out along Weiss St. Restrooms inside Bronner's. The GPS coordinates of the start point = (43.31242, -83.73562).

## Additional Information for Frankenmuth 6k and 10k Walks

- This is a seasonal event and may be walked from April 1st through December 31th.
- Trail Description: Rated: 1A. Walk through historical Frankenmuth, Michigan's "little Bavaria". You will walk through a park along a river, cross a covered bridge, pass through downtown Frankenmuth and the surrounding neighborhood. Shopping and snacking opportunities abound in and around this colorful German style village.
- Water and restrooms are available at Bronner's and in the River Place shopping mall.
- Everyone is welcome. This event is sanctioned by the American Volkssport Association – America's Walking Club (AVA), a member of the International Federation of Popular Sports (IVV). It counts towards the acquisition of IVV Achievement Credit. No awards.
- Pets allowed, leash required and not inside buildings. Strollers and wheelchairs allowed but some sections may be hard to negotiate.
- Special Programs: "Walking the USA A-Z", "Walking with America's Veterans", "Grain Elevators" & "Walking with Wild Things".
- For additional information about this event contact: Roxie Weaver, 616-745-9624, or [geiserweaver@gmail.com](mailto:geiserweaver@gmail.com).



**AMERICA'S  
WALKING CLUB**  
— ESTABLISHED 1974 —

SANCTIONED EVENT  
Eligible for credit towards IVV Achievement Awards



**Washtenaw Wanderers Volkssporting Club©2025**

## FRANKENMUTH MICHIGAN

### AVA 6k Directions

*These instructions may be used only by individuals who have received and signed the AVA Athletic Waiver covering this event. If you have a question about the instructions, call Roxie Weaver at 616-745-9624.*

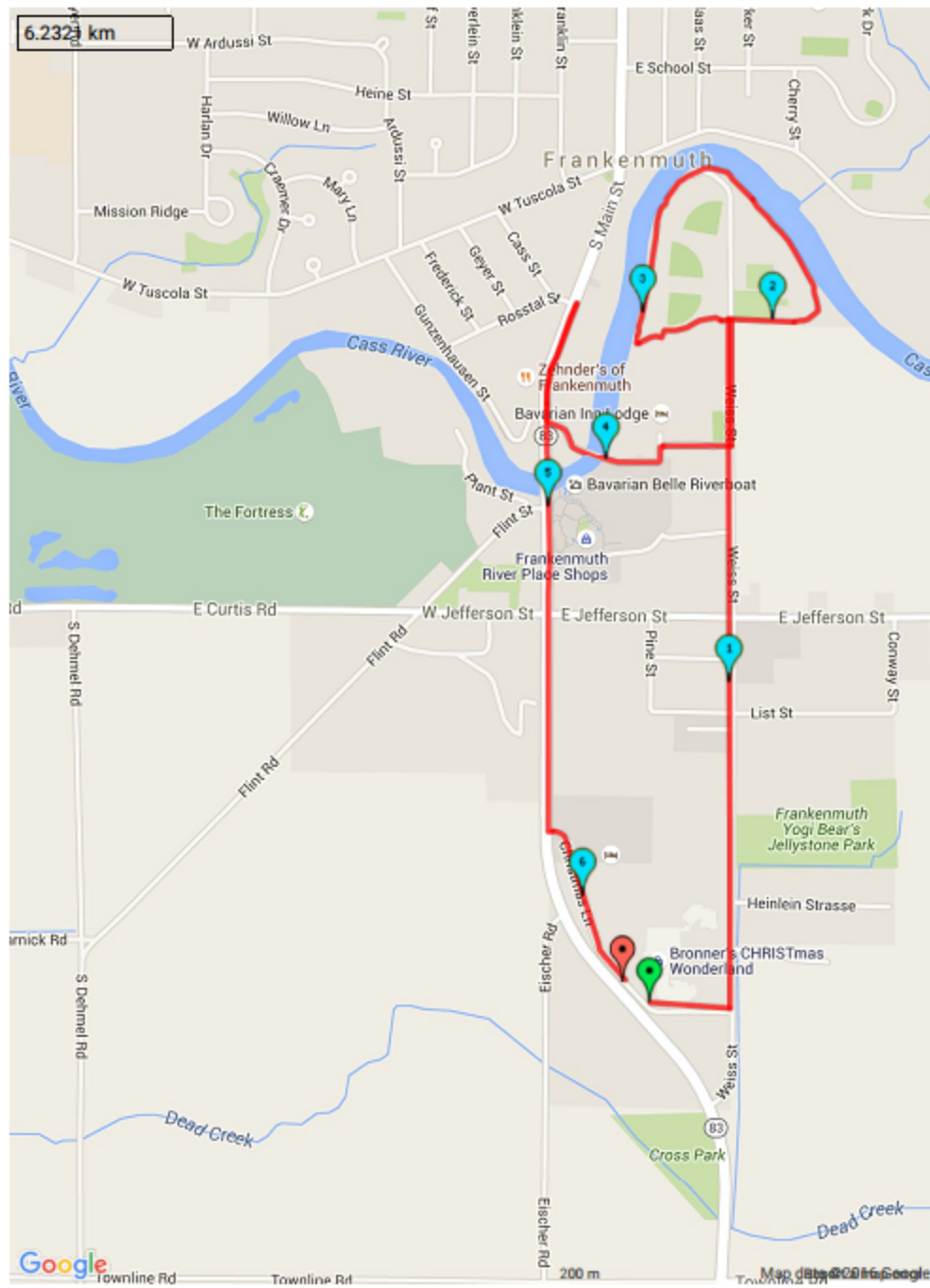


In case of emergency, please call 911.

1. Begin in parking lot of **Bronner's Christmas Wonderland next to the Silent Night Chapel, 25 Christmas Lane, Frankenmuth, MI 48734**. GPS Coordinates = (43.31242, -83.73562).
2. Go to Christmas Lane, the road which circles Bronner's and its parking lots. Follow Christmas Lane around Bronner's to the sidewalk along Weiss St. **LEFT** onto Weiss St sidewalk.
3. Walk almost 2km along Weiss St until you see the sign for HERITAGE PARK on the right side of the Street.
4. **RIGHT** and follow bike trail along dirt road to Woodcarver's Guild cottage.
5. Follow path on the left side of the cottage and go to the river bank. **LEFT** and follow the paved trail along the curved river bank until behind the lodge building and remain on paved trail which turns to the left and goes to the rear of the lodge building and then between the lodge and the baseball fields and arrives back at Weiss St opposite the Woodcarver Guild driveway then **RIGHT** onto Weiss St *Caution, sometimes the trail becomes flooded; if flooded then backtrack to the cottage and walk back to Weiss Rd and LEFT.*
6. **RIGHT** (over the grass) into the parking lot of the Bavarian Inn. Pass through the parking lots and walk to the covered bridge. *Use caution: distracted, ill-mannered, tourists will attempt to maneuver large SUV's at high speeds throughout the parking lot.*
7. Walk through the covered bridge, **RIGHT** at Main St.
8. Follow Main St. to Cass St. (street light and Historical Museum).
9. Turn around on Main St. and follow Main Street all the way back to Christmas Lane at the edge of Bronner's.
10. While walking along Main St, just over the bridge, you will pass River Place shopping mall and you may wish to stop and visit (shops and food and restrooms).
11. **LEFT** from Main St. into Christmas Lane and return to where you started the walk. This completes the 6km walk.
12. Make your visit complete by going into Bronner's. and taking a look around.



Washtenaw Wanderers Volkssporting Club©2025



## FRANKENMUTH MICHIGAN

### AVA 10k Directions

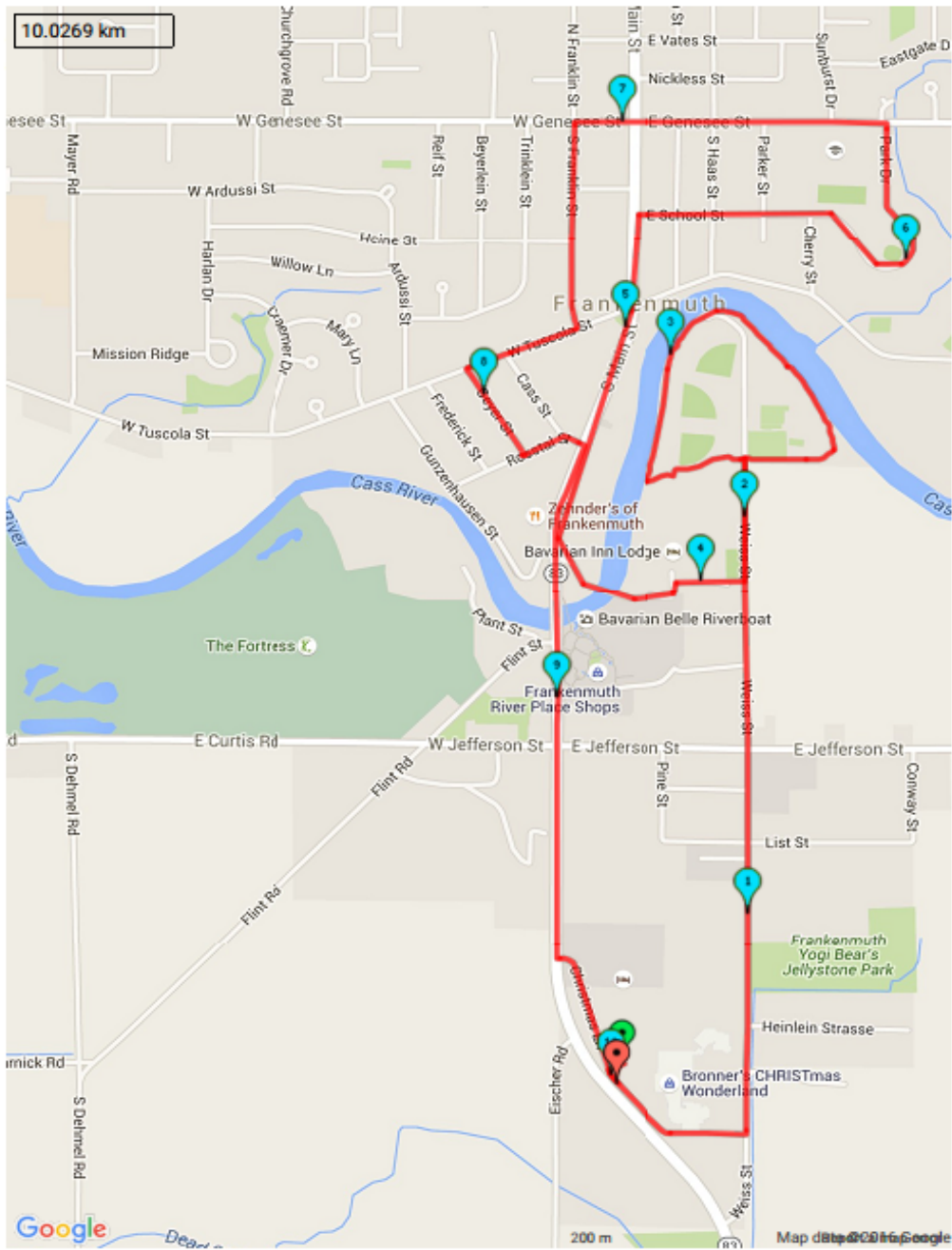
*These instructions may be used only by individuals who have received and signed the AVA Athletic Waiver covering this event. If you have a question about the instructions, call Roxie Weaver at 616-745-9624.*



In case of emergency, please call 911.

1. Begin in parking lot of **Bronner's Christmas Wonderland next to the Silent Night Chapel, 25 Christmas Lane, Frankenmuth, MI 48734**. GPS Coordinates = (43.31242, -83.73562).
2. Go to Christmas Lane, the road which circles Bronner's and its parking lots. Follow Christmas Lane around Bronner's to the sidewalk along Weiss St. **LEFT** onto Weiss St sidewalk.
3. Walk almost 2km along Weiss St until you see the sign for HERITAGE PARK on the right side of the Street.
4. **RIGHT** and follow bike trail along dirt road to Woodcarver's Guild cottage.
5. Follow path on the left side of the cottage and go to the river bank. **LEFT** and follow the paved trail along the curved river bank until behind the lodge building and remain on paved trail which turns to the left and goes to the rear of the lodge building and then between the lodge and the baseball fields and arrives back at Weiss St opposite the Woodcarver Guild driveway then **RIGHT** onto Weiss St. *Caution, sometimes the trail becomes flooded; if flooded then backtrack to the cottage and walk back to Weiss Rd and LEFT.*
7. **RIGHT** (over the grass) into the parking lot for the Bavarian Inn. Pass through the parking lots and walk to the covered bridge. *Use caution: distracted, ill-mannered, tourists will attempt to maneuver large SUV's at high speeds throughout the parking lot.*
8. Walk through the covered bridge, **RIGHT** at Main St.
9. Follow Main St. to E. School St. **RIGHT** on E. School St and go past Cherry St.
10. Bear right and circle around behind High School following Park Drive with School on left and park on the right.
11. **LEFT** at Genesse St and follow Genesse, crossing Main, to S. Franklin St.
12. **LEFT** onto S Franklin.
13. At end of S Franklin **RIGHT** onto W Tuscola St.
14. **LEFT** at Geyer St.
15. **LEFT** onto Rosstal St. **RIGHT** onto Cass St. and return to Main St.
16. Cross Main, then **RIGHT** onto Main.
17. Follow Main back to Christmas Lane and Bronner's and the start point. Shopping and Restaurants are along the way.





## After Walking Frankenmuth Michigan – Y2382

Be sure to log back into <http://my.ava.org> > my account > finish table to log your walk as completed

### Information about Frankenmuth

- Bronner's Christmas Wonderland [www.bronners.com](http://www.bronners.com)
- Food and Lodging <https://www.frankenmuth.org/>



