



Trout Brook/Oakland Cemetery Walk




Event Details and Table of Contents	1-2
About Trout Brook Nature Sanctuary	3
Oakland Cemetery Notable Historical Figures and Monuments	4-7
5 km Directions	8
10 km Directions	9-10
Minnesota Club Information	11

Dates:	1/1/2023 - 12/31/2023
City / State:	St Paul, MN
Event Name:	Trout Brook/Oakland Cemetery
Event Type:	Seasonal Walk
Event ID:	SN: 121974 - 2023 / Y2610
Distance - Trail Ratings:	5 & 10 km - 1A
Description:	<p>Walk a former railroad site transformed into a 42-acre sanctuary of native grasses, flowers, and trees. The 10 km route goes through Oakland Cemetery, the Midwest's oldest. It was founded in 1853 to serve as the primary non-denominational cemetery in St. Paul. It has a park-like atmosphere with groves of trees, rolling landscape, convenient paths and accessible roads within its beautiful 100-acre grounds and is the final resting place of many area pioneers. A guide included with the OSB download provides locations for a sampling of some of the notable historical figures and monuments. Feel free to wander off the trail and explore.</p>
Amenities:	Strollers: Medium Wheelchairs: Medium Pets: Yes Restrooms: Yes
Special Programs:	This event doesn't have any special Programs assigned.
Start Times:	Start/Finish during daylight hours
Location:	WEB REGISTRATION ONLY using the AVA Online Start Box (https://my.ava.org)



Trout Brook/Oakland Cemetery Walk



Start Point / Driving Directions:	Trout Brook Trailhead, 1200 Jackson St, St Paul, MN 55117. Trailhead parking is at the NE corner of Jackson St and Maryland Ave in St Paul. The entrance is on Jackson St. From the south take I-35E north of I-94 to the Maryland Ave exit and turn left to Jackson, then right and immediate right to parking lot. From the north take the Maryland Ave exit south of Hwy 36 and turn right. Right at Jackson and immediate right into parking lot.
Awards & Fees:	IVV Credit Only
Comments:	Pets are allowed everywhere on the route except Oakland Cemetery which can be bypassed along Jackson St. Restrooms available at start point and Eastside Heritage Park.
Host Club:	Twin Cities Volkssport
Contact:	Ken Johnson 651-774-9607 email: johnsonck@centurylink.net
Website:	 www.facebook.com/groups/2039870106313616

WALK COMPLETION AND CREDIT: Be sure to log back into the OSB system to finish/complete your online registration after doing the event. The OSB system does not deduct any event fee from a participant's Event Bank until they have submitted event completion info including the date the event was walked, the distance walked, and the selection of applicable special programs that person is participating in. Nevertheless, a fee of \$2 for a downloaded PDF is deducted from the Event Bank when the PDF is downloaded. Later, any PDF fees are credited back to a user's Event Bank when they submit the event completion info as a paying for credit participant. Note however that the \$2 coupon for the downloaded PDF expires in 60 days. Also note that an event registration expires after 30 days, but if your registrations lapses, you may re-register without cost.

Trout Brook Nature Sanctuary: From Brownfield to Greenway

The 40-acre restored wilderness area near I-35E and Cayuga Avenue was once a lush valley carrying Trout Brook from Lake McCarrons in Roseville to the Mississippi River in Downtown Saint Paul. By the 1880s, railroad construction had filled the channel, diverting Trout Brook into an underground sewer pipe and permanently altering the natural environment. Years of industrial pollution had also contaminated the groundwater, leading to EPA Brownfield designation in the early 2000s. A new solution for collecting and filtering stormwater from adjacent communities was desperately needed to improve the site and restore balance to the natural ecosystem.

By the 1880s, railroad construction had filled the channel, diverting Trout Brook into an underground sewer pipe and permanently altering the natural environment. Years of industrial pollution had also contaminated the groundwater, leading to EPA Brownfield designation in the early 2000s. A new solution for collecting and filtering stormwater from adjacent communities was desperately needed to improve the site and restore balance to the natural ecosystem.

The Capitol Region Watershed District and its partners including the City of Saint Paul Department of Parks and Recreation, City of Saint Paul Public Works Sewers Division, District 6 Planning Council, Tri-Area Block Club, Ramsey County, Minnesota Department of Transportation, and many dedicated community members, joined forces to convert the site back into a natural area in this highly developed part of the city.

For the first time in more than a century, the project restored an open stream channel that flows through a series of ponds and wetlands, cleaning stormwater as it meanders through the system. It features a number of ponds for capturing runoff from surrounding neighborhoods. These ponds allow solids to settle out prior to entering the open channel, filtering the water through iron-enhanced sand filtration systems that capture nutrient pollution. During dry periods a small pumping/lift station pulls baseflow from the Trout Brook Storm Sewer Interceptor to augment water flow in the stream. This provides consistent flow at all times, which improves the aquatic and riparian habitat of the stream. Additionally, it ensures the stream amenity can be enjoyed by park visitors regardless of season or climate conditions. All water flowing through the system now enters the Sims-Agate stormwater pond, which is cleaner and has increased wildlife habitat because of improvements to the system upstream. The project is now treating approximately 200 acres of previously untreated, developed watershed.

In addition to the re-creating the historic stream channel, Trout Brook is now a restored natural system with little resemblance to the abandoned railroad corridor that once stood in its place. Today, the site is also more accessible and enjoyable for the community. Art installations and walking paths were added throughout the sanctuary, including a new section of the Trout Brook Regional Trail that extends from Jackson Street at the north end of the sanctuary to connect to the Gateway Trail at Cayuga Avenue at the south end of the park. Trout Brook Nature Sanctuary is an approximately 42-acre site located west of I-35E between Norpac Rd. and Cayuga Ave. and is part of the larger Trout Brook Greenway. A proposed Trout Brook Regional Trail is to run through the site from Jackson St. to Cayuga to the Gateway Trail. The vision for the site is to create a nature preserve in the heart of a heavily urbanized area. The residential area to the west was at one time perched on a bluff that overlooked the Trout Brook valley. The Trout Brook ran from McCarron's lake in Roseville to the Mississippi River. With the development of the railroad and industry, the creek was filled and put underground in the Trout Brook storm sewer. The natural valley was lost and, in turn, the neighborhood connection to the natural environment.

Visitors in the summer months can check out the newly planted perennial gardens divided into two small spaces with four beds around the trail head featuring pollinator-friendly honeysuckles, grasses and hydrangeas.

Oakland Cemetery Notable Historical Figures and Monuments



Many distinguished Minnesotans in Oakland Cemetery are memorialized by monuments. This listing and map provides a sampling. Feel free to leave the trail and visit the monuments and graves of governors (six of them), other political figures, war heroes, business leaders, and prominent St. Paul citizens that are identified on the accompanying map.

James M Goodhue (1810-1852) Map Post A 1

Came to St Paul in 1849 and established in the first newspaper in the territory, known then as the Minnesota Pioneer and today as the Pioneer Press.

Christ Church Cemetery Map Post A 2

Added to Oakland in 1864.

Lindeke Family Mausoleum Map Post A 3

Husband of Rose Brabek, father of Frank, William, Rosa and Emma. William arrived in Saint Paul about 1857, and made a fortune in wholesale dry goods.

Lord is our Shepherd Monument Map Post B 4

Bigelow Family Mausoleum Map Post B 5

Herbert Huse Bigelow cofounded the Brown and Bigelow publishing company. On June 24, 1924 he was convicted for tax evasion, fined ten thousand dollars, and sentenced to three years in Leavenworth Penitentiary and released after eight months. While incarcerated, he befriended infamous safe-cracker Morris Rudensky and the Brown and Bigelow company became notable for developing prototype convict rehabilitation programs through the hiring of hundreds of ex-convicts.

Angel of Death a.k.a. The Dark Angel Map Post B 6

Pedestal inscribed "That Annunciation Men Call Death" remains, but the statue has been relocated inside the chapel. No doubt to spare her the unwanted attention brought on by the many myths and legends she's inspired.



Shepard Mausoleum Map Post B 7

David Shepard, construction engineer of the St. Paul & Pacific Railroad, was given permission to build a mausoleum for his family, the first in Oakland cemetery.

Archibald F Bush (1887-1966) Map Post B 8

One of the pioneers of Minnesota Mining and Manufacturing Company, he rose rapidly to become Chairman of its Executive Committee. He and his wife established the Bush Foundation to which he left some of his very substantial estate.

Weyerhaeuser Family Monument Map Post B 9 (1834-1914)

Friedrich (Frederick) Weyerhaeuser, was a timber mogul and founder of the company bearing his name. He is the eighth-richest American of all time.

Edward Duffield Neill (1823-1893) Map Post B 10

A Presbyterian minister, he was a Chancellor of the University of Minnesota from 1854 to 1861. He became the President of Manchester College in 1873 and from 1884 until his death was its Professor of History, Literature and Political Economy.

William Crooks (1832-1907) Map Post B 11

The chief civil engineer of the St. Paul and Pacific Railroad. The first railroad locomotive used in Minnesota in 1862 was named "William Crooks" in his honor.



Oakland Cemetery Notable Historical Figures and Monuments



Norman W Kittson (1814-1888) Map Post B 12

Manager of the American Fur Company in northern Minnesota, a member of the territorial legislature from 1851 to 1855, and Mayor of St. Paul in 1858. He established a line of steamers known as the Red River Transportation Company. Kittson County is named for him.

Arthur J. Gillette (1865-1921) Map Post C 13

A pioneer student of medicine in Minnesota, he established the Hospital for Crippled and Deformed Children in St. Paul (now known as the Gillette Children's Hospital), the first institution of its kind in America.

Lucius P. Ordway (1862-1948) Map Post C 14

One of the pioneer investors in Minnesota Mining and Manufacturing Company and instrumental in moving its headquarters to St. Paul. A business and civic leader. He built the St. Paul Hotel.

Edward A. Webb (1854-1915) Map Post C 15

Founder and President of Webb Publishing Co., publisher of The Farmer magazine.

IOOF Monument Map Post D 16

International Order of Odd Fellows Monument

William R. Marshall (1825-1896) Map Post D 17

Founded the St. Paul Press in 1861 which became the leading Republican newspaper of the state, he served as a Colonel in the Seventh Minnesota Regiment in the Civil War and was Governor of Minnesota from 1866 to 1871.

Mary R. Randall (1883-1969) Map Post D 18

Wife of St. Paul attorney Clarence R. Randall and mother of Ramsey County Attorney William B. Randall. She was an active supporter of the YWCA and the Girl Scouts.

Alexander Ramsey (1815-1893) Map Post D 19

The first territorial Governor of Minnesota from 1849 to 1853. Mayor of St. Paul in 1855, Governor of Minnesota from 1860 to 1863, United States Senator from 1863 to 1875, and Secretary of War in the Cabinet of President Hayes from 1879 to 1881.

Henry H Sibley (1811-1891) Map Post D 20

As a representative in Congress, he was instrumental in the creation of the territory of Minnesota. and was the first Governor of Minnesota serving from 1858 to 1860.

John L. Merriam (1825-1895) Map Post D 21

An incorporator and stockholder of both the First National Bank and the Merchants National Bank and president of Merchants. Speaker of the House in the Minnesota Legislature in 1871.

Amherst H. Wilder (1828-1894) Map Post D 22

One of St. Paul's pioneer businessmen, Wilder, his wife and daughter left a substantial part of their family fortune to the establishment of what is now known as the Amherst H. Wilder Foundation.

Parker Paine (1808-1875) Map Post D 23

He came to St. Paul in 1853 and established a banking business which ultimately became the First National Bank of St. Paul.

Henry M. Rice (1816-1894) Map Post E 24

Was instrumental in enabling Minnesota statehood. He was a United States Senator from 1858 to 1863. He donated Rice Park to the City of St. Paul. Rice County is named for him.



Oakland Cemetery Notable Historical Figures and Monuments



Willis A. Gorman (1816-1876) Map Post E 25

He was appointed the second territorial Governor of Minnesota in 1853, succeeding Alexander Ramsey.

Harriet E Bishop (1817-1883) Map Post E 26

A Vermont schoolteacher, she established in St. Paul in 1847 the first secular school in the territory. Harriet island is named in her honor.

William Hamm (1859-1931) Map Post E 27

A son of Theodore Hamm, founder of the Theodore Hamm Brewing Company. President of Hamm Realty Company, he financed the construction of many business blocks in the Twin Cities including the Hamm Building. He was the first King of the Saint Paul Winter Carnival.

Robert C Harper (1790-1903) Map Post E 28

He lived in three centuries, born in the eighteenth and died in the twentieth.

Soldiers Rest Map Post E 29 Area donated for veterans' burial.

Fire Fighters Monument Map Post E 30

John B. Sanborn (1826-1904) Map Post E 31

A St. Paul lawyer, he was Adjutant General of Minnesota in 1861 and organized the state troops at the beginning of the Civil War. He served in both the House and the Senate of the State Legislature.

Charles E. Flandrau (1828-1903) Map Post E 32

One of the three Justices of the first Minnesota Supreme Court established when statehood was achieved in 1858. He recruited and led a corps of 125 men in the defense of New Ulm during the Sioux uprising in August of 1862.

Joseph Burger (1848-1921) Map Post E 33

The youngest man ever commissioned as Captain in the United States Army. He was awarded the Congressional Medal of Honor presented to him personally by President Lincoln. He served two terms in the Minnesota Legislature as a representative from Blue Earth County. He was the grandfather of Warren E. Burger, the former Chief Justice of the United States.

Zion Cemetery Map Post F 34

Added to Oakland in 1904.

Herbert W. Joesting (1905-1963) Map Post F 35

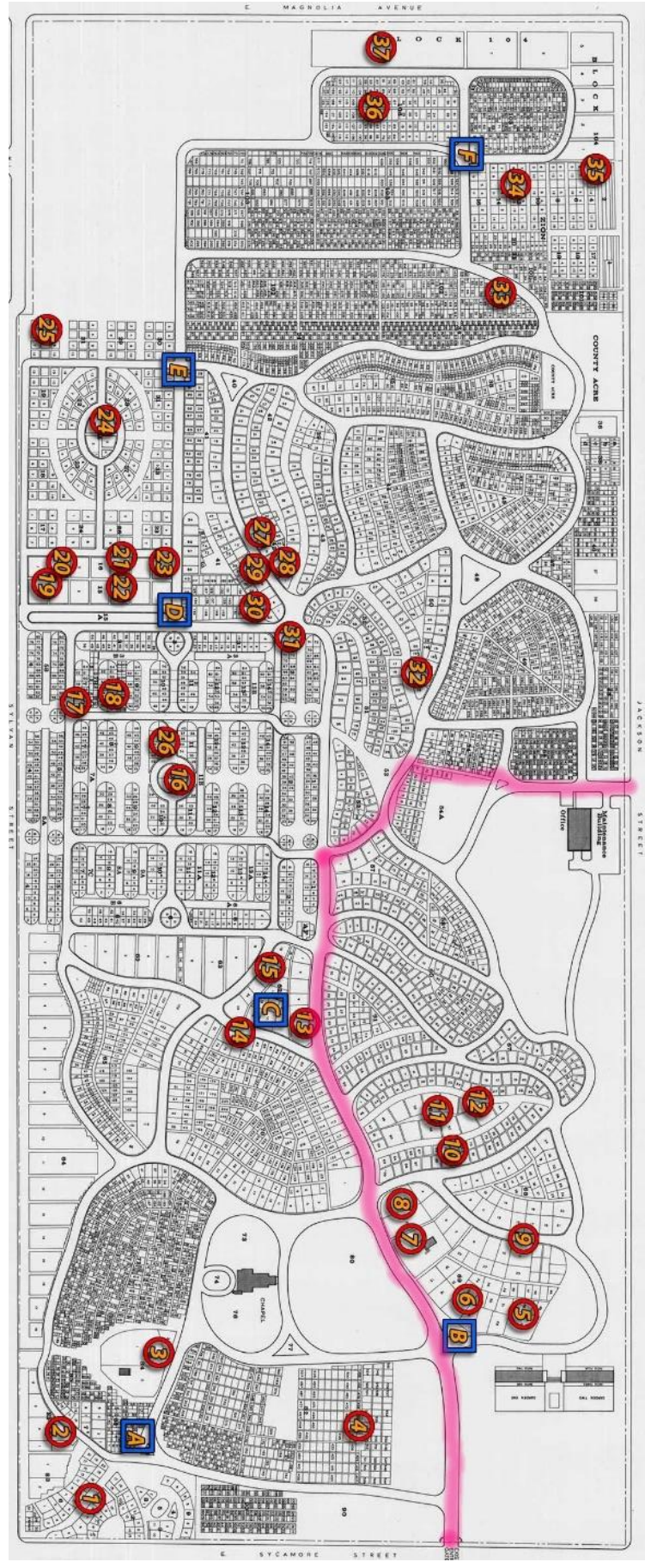
All-American fullback for the University of Minnesota football team in 1926 and 1927, known as the Owatonna Thunderbolt. He led the Gophers to an undefeated season in 1927.

Russian Graves Map Post F 36

One of several areas designated for nationality groups.

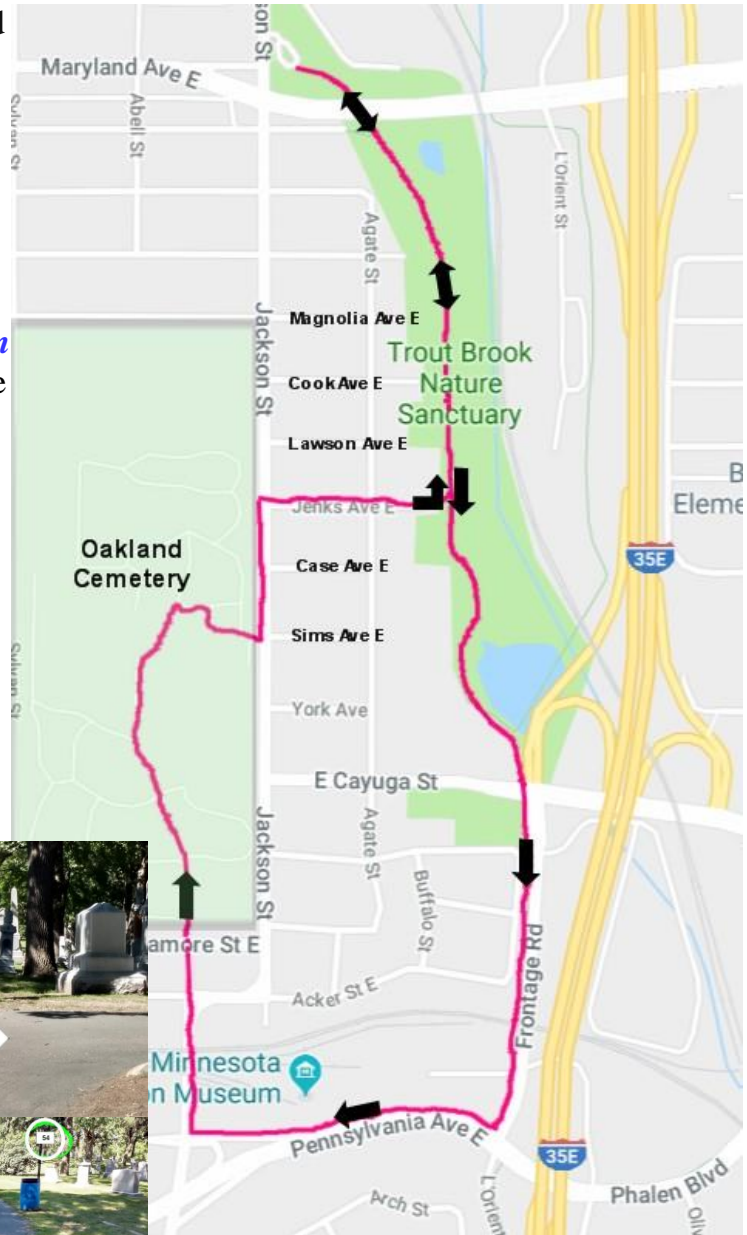
Chinese Memorial Monument Map Post F 37

Oakland Cemetery Notable Historical Figures and Monuments



Trout Brook Oakland Cemetery 5 km Walk

- 1) Enter Trout Brook Nature Sanctuary and follow the paved asphalt path under the art bridge to the first intersection immediately after the bridge.
- 2) **Left** onto gravel trail.
- 3) **Right** at "T".
- 4) Cross Trout Brook using the alphabet stepping stones. **0.95 km**
- 5) **Left** at asphalt trail intersection. **1.01 km**
- 6) **Cross** E. Cayuga St. and continue on the asphalt trail alongside the frontage road with the barrier on the right. **1.33 km**
- 7) **Right** at Pennsylvania Ave E. You will walk past the Minnesota Transportation Museum on the right. **1.89 km**
- 8) Stay on sidewalk and follow it up to Jackson St. **Right** at Jackson St. **2.39 km**
- 9) Cross Acker St. E. and Sycamore St. E. and continue straight into Oakland Cemetery. **2.7km**
- 10) Stay on the curvy main road making no turns until you reach the **Office** sign pointing to the right. Turn **Right**. **3.19 km**
- 11) **Right** at brick path in front of sign post number 54. Watch your step. Continue straight past the office building and exit the cemetery.
- 12) **Left** onto the sidewalk.
- 13) **Right** at Jenks St. crossing Jackson St. **3.64 km**
- 14) Cross Agate St., pass the school on your left, and enter Trout Brook Nature Sanctuary. Turn **Left**. **3.95 k**
- 15) Continue on paved trail. Pass under the art bridge and return to the start point.



In case of Emergency: Dial 911
 Event related assistance:
 Ken Johnson POC/Club President 651-774-9607
 Susan Pinneke DRD (515) 423-8437

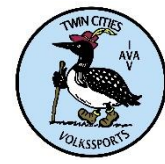
These walk directions and maps may only be used in conjunction with a signed American Volkssport Association athletic waiver.

All other uses prohibited

Copyright 2023 Twin Cities Volkssports

Trout Brook Oakland Cemetery 10 km Walk

Reference numbers on map correspond to direction numbers



- 1) Enter Trout Brook Nature Sanctuary and follow the paved asphalt path under the art bridge to the first intersection immediately after the bridge.
- 2) **Left** onto gravel trail.
- 3) **Right** at "T".
- 4) Cross Trout Brook. *.95 km*
- 5) **Left** at asphalt trail intersection. *1.01 km*
- 6) **Left** at E. Cayuga St/L'Orient. *1.33 km*
- 7) **Left** at Phalen Blvd and onto the Bruce Vento Trail. *2.04 km*
- 8) **Right** on Payne Ave crossing over Phalen Blvd. *2.97 km*
- 9) **Continue** on Payne Ave.
- 10) **Cross** Preble St
- 11) **Left** at crosswalk to the other side of Payne Ave. Preble St veers left to Beaumont St
- 12) Watch for the Swede Hollow sign on the left. *3.35 km*
- 13) **Left and immediate Right** onto trail down the hill and under the bridge to Swede Hollow. Swedehenge is straight ahead. *3.38 km*
- 14) Walk around the right side of Swedehenge keeping Swedehenge on your left.
- 15) **Left** continuing counter-clockwise around the far side of Swedehenge.
- 16) **Slight Right** at next intersection and continue past former Hamm's brewery site on the right. *3.59 km*
- 17) Trail passes under a railroad bridge and then under Phalen Boulevard. *3.86 km*
- 18) Trail splits in three directions at Eastside Heritage Park



- (restrooms and water available).
Take the trail on the **Right**. *4.25 km*
- 19) **Sharp Right** onto trail prior to parking lot entrance. *4.39 km*
 - 20) **Right** at asphalt path to make a partial circle counterclockwise around the park. *4.44 km*.
Straight past interpretive kiosk and up the stairs back onto Bruce Vento Trail.
 - 21) **Right** at Bruce Vento Trail. *4.62 km*
Clock tower at 635 Phalen Blvd at Payne Ave across from hardware store
 - 22) **Cross** Cayuga St *5.65 km* **Check out the historical markers at Westminster Junction. 5.97 km**
 - 23) After passing under freeway 35E, Phalen Boulevard becomes Pennsylvania Ave. *6.41 km*
 - 24) Stay on sidewalk and follow it up to Jackson St. The Minnesota Transportation Museum is on the right. **Right** at Jackson St. *7.02 km*
 - 25) Cross Acker St. E. and Sycamore St. E. and continue straight into Oakland Cemetery. Stay on the curvy main road making no turns until you reach the #57 sign. *7.34 km*
 - 26) Turn **Right** just beyond the #57 sign and before the tree with the big burl. *7.81 km*



These walk directions and maps may only be used in conjunction with a signed American Volkssport Association athletic waiver.

All other uses prohibited

Copyright 2023Twin Cities Volkssports

Trout Brook Oakland Cemetery 10 km Walk

Reference numbers on map correspond to direction numbers

27) **Right** at brick path in front of sign post number 54. Watch your step. Continue straight past the office building and exit the cemetery.

7.90 km


28) **Left** onto the sidewalk. **8.03 km**

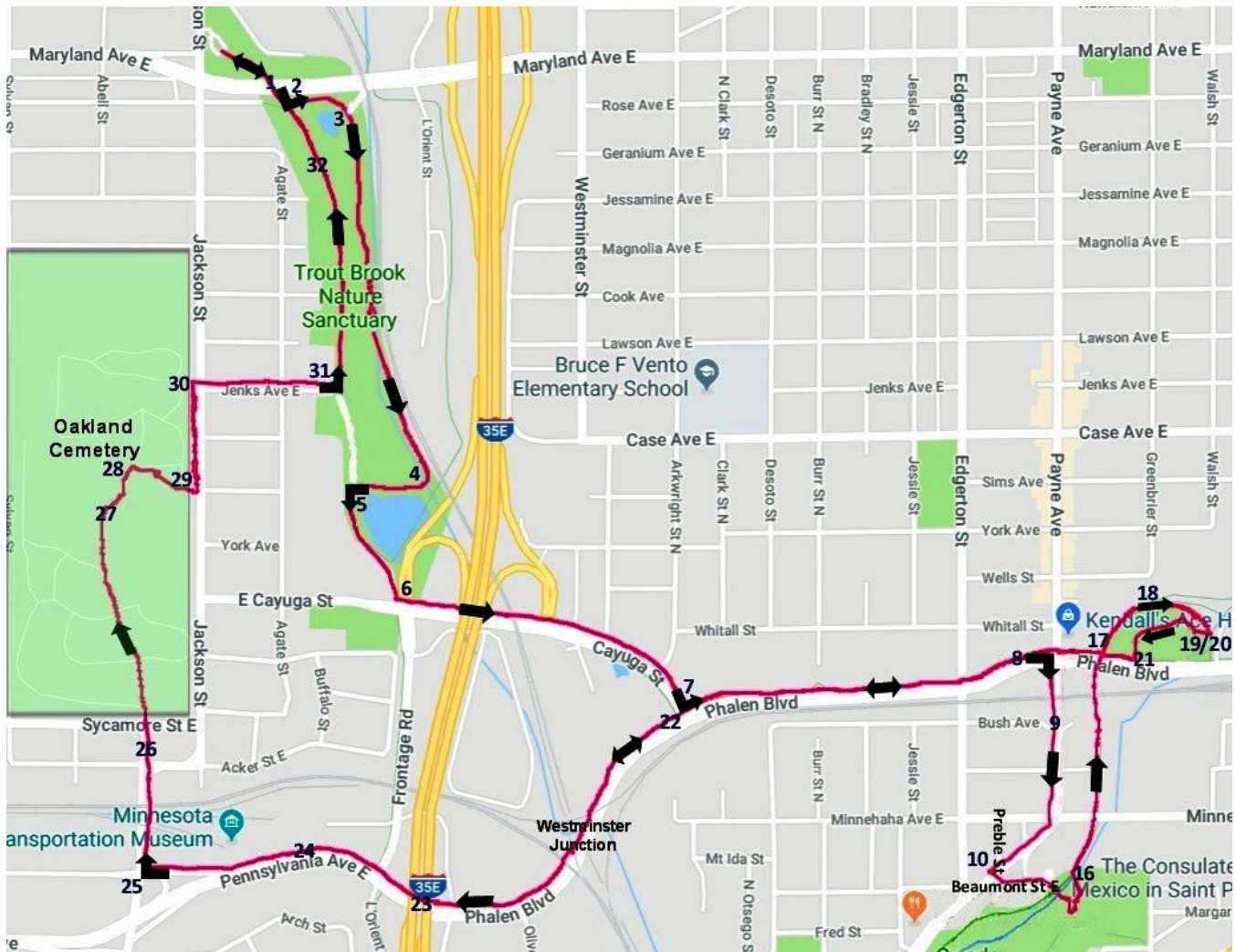
29) **Right** at Jenks St. crossing Jackson St. **8.26 km**

30) Cross Agate St. and enter Trout Brook Nature Sanctuary. Turn **Left**. **8.56 km**

31) Continue on paved trail. Pass under the art bridge and return to the start point.



	In case of Emergency: Dial 911
	Event related assistance:
	Ken Johnson POC/Club President 651-774-9607
	Susan Pinneke DRD (515) 423-8437



These walk directions and maps may only be used in conjunction with a signed American Volkssport Association athletic waiver.

All other uses prohibited

Copyright 2023Twin Cities Volkssports

Club point of contact:

Click inside the box to send an email.

Bonnie Johnson
bonjohn@comcast.net
(763) 229-3584

Club mailing address:

Lake Country Wanderers
% Bonnie Johnson
25 - 66th Way NE
Fridley, MN 55432

Club point of contact:

Click inside the box to send an email.

Julie Bjorklund
poipubeach@frontiernet.net
(612) 868-9065

Club mailing address:

NorthStar Trail Travelers
% Donna Seline
3951 Russell Ave. N
Minneapolis, MN 55412

Club point of contact:

Click inside the box to send an email.

Ken Johnson
johnsonck@centurylink.net
(651) 774-9607

Club mailing address:

Twin Cities Volkssport
% Ken Johnson
1994 Payne Ave
Maplewood, MN 55117