

Albany Pine Bush Preserve
Discovery Center
195 New Karner Road
Albany, NY 12205
518.456.0655

Directions to Start: From I-87 take exit 2W (Rt 5 West, Central Avenue). Follow Rt 5 for about 2 miles, then turn left onto Rt 155 (New Karner Rd). Continue on Rt 155 for about 1.2 miles. Turn left at a traffic light in front of The Discovery Center, 195 New Karner Road. From Route 20 (Western Avenue), go north on Rt 155 (New Karner Road) for 1.9 miles. Turn right at the light to the Discovery Center at 195 New Karner Road.

Welcome to the Albany Pine Bush Preserve. The Albany Pine Bush is one of the best remaining examples of an inland pine barrens in the world. This gently rolling sand-plain is home to a unique variety of rare plants and animals including the federally endangered Karner Blue Butterfly. Walks (or snowshoeing) can be done 24/7/365. However, the free public interpretive center is only open daily 9-4, and 10-4 on weekends/holidays except New Year's Day, Thanksgiving, Christmas Eve and Christmas.

We are offering 5k and 10k hikes on each of two different trails, plus a casual walk: One trail is rated 1B with well-groomed trails and few obstacles. Another trail is rated 2C due to moderate hills/stairs and some rocks, roots and soft sand. The casual walk is rated 1A and does not earn IVV credit, either for distance or event. Water and restrooms are located at the Start/Finish during normal hours.

Because the hikes are off-pavement, hiking boots and poles should be considered. Also for your safety, please be aware of ticks. Although they are most common from April through November, deer ticks can be found any time of the year. Please take proper precautions to prevent tick bites and check yourself thoroughly for ticks after visiting the preserve.

The following maps and directions may only be used in conjunction with a signed American Volkssport Association athletic waiver. All other uses are prohibited.

For immediate emergency assistance call 911

POC: Wayne Knapp 518.469.7298

pinebushwalk@walkescv.org

Truax Trail Barrens 5k & 10k
Rated 1B
(unpaved rolling sand hills)

1. Exiting the Discovery Center, turn **RIGHT** on red pavers through signs.
2. **RIGHT** on red pavers to Karner Barrens East Trailhead #1.
3. Go up short ramp and make an immediate **RIGHT** on the Blue/Yellow trail.
4. **RIGHT** on Green trail, entering the Truax Trail Barrens, walking beneath Route 155 (New Karner Road) and along the right side of the New York State Thruway (1-90).
5. **CONTINUE** to Old State Road.
6. **CAREFULLY CROSS** Old State Road.
7. **CONTINUE** on the path along right side of Kings Road.

8. 5k walkers **CONTINUE** to Trailhead #12 (between location markers #90 & #89) and **TURN AROUND**.
9. 5k walkers jump to direction #12.

10. 10k walkers **CONTINUE** past Trailhead #12 until the Green trail ends at location marker #83 and meets the Red trail (Kings Highway Barrens).
11. 10k walkers go counterclockwise around the Red trail until returning to location marker #83 and the Green trail.
12. **RETURN** on the Green trail until it "T's" with the Blue/Yellow trail.
13. **LEFT** on the Blue/Yellow trail back to Trailhead #1 and the Discovery Center.

Karner Barrens 5k
Rated 2C

(unpaved, some moderate hills, some rocks, roots and soft sand)

1. Exiting the Discovery Center, take a **SHARP LEFT** on a macadam path, winding through an outdoor native flora exhibit, until it returns to the front entrance.
2. Facing the front entrance, go **LEFT** on a red paver walkway, reading the signs along the way.
3. First **RIGHT** on slate pavers toward the compost toilets.
4. Walk underneath the canopy and go **LEFT** on red pavers.
5. **RIGHT** on the Discovery Trail until it ends at a "T" at the Blue/Yellow trail.
6. **RIGHT** on the Blue/Yellow trail.
7. **CONTINUE** straight on the Yellow trail. This is the perimeter trail that continues counterclockwise for another 2.17 miles until it meets the macadam Discovery Trail at a "T".
8. **RIGHT** on the Discovery Trail back to the Discovery Center.

Karner Barrens 10k
Rated 2C

(unpaved, some moderate hills/stairs, rocks, roots and soft sand)

1. Exiting the Discovery Center, **RIGHT** on the red paver walkway.
2. **RIGHT** at the next red paver walkway toward the Karner Barrens East Trailhead #1.
3. From Trailhead #1, walk up the path and take an immediate **RIGHT** on the Blue/Yellow trail.
4. **CONTINUE** straight on the Yellow trail perimeter loop for 2.17 miles in a counter-clockwise direction until it "T's" with the macadam Discovery Trail.
5. **LEFT** on the Discovery Trail for a short distance, over footbridge, until it "T's" with the Blue trail..
6. **LEFT** on Blue trail until it "T's" at the Blue/Yellow trail.
7. **RIGHT** on Blue/Yellow trail and go past Trailhead #1 for a short distance.
8. **LEFT** on the Discovery Trail, back over the footbridge onto the macadam path.
9. After a short distance, **RIGHT** on Yellow trail for 2.17 miles until reaching the Blue trail.
10. **RIGHT** on Blue trail.
11. **RIGHT** on the Discovery Trail back to the Discovery Center.

Discovery Center Casual Walk
Rated 1A
(mostly level paved surfaces)

1. Enjoy the information and exhibits within the Discovery Center.
2. Exit the Discovery Center and take a **SHARP LEFT** through the exterior flora exhibits, returning to the front entrance.
3. Take a **LEFT** along the red pavers, reading the signage along the way.
4. Take the **FIRST RIGHT** on the slate pavers toward the compost toilets.
5. Walk **UNDER** the canopy.
6. Turn **LEFT** on the red pavers.
7. Turn **RIGHT** on the Discovery Trail that goes gently up and clockwise, over a small footbridge and ends at a "T" at the Blue/Yellow trail.
8. Turn **RIGHT** for a short distance to Trailhead #1.
9. Return to the Discovery Center.

-
10. ****Walking boots and poles should be considered** If additional distance is desired on the Blue/Yellow trail. This section would be rated 1B due to an unpaved surface over rolling sandhills. Return to Trailhead #1 and make an immediate right on the Blue/Yellow trail. You can walk quite a ways out and back on gentle rolling sandhills.

ACCESSING INTERESTING PLACES IN THE ALBANY PINE BUSH PRESERVE

1. Karner Barrens: Starting at the Albany Pine Bush Discovery Center, several miles of trails meander through the dunes and some of the best pitch pine-scrub oak barrens that exist in this preserve. The green "through trail" connecting to Tussock Trail Barrens and beyond begins here.

5. Blueberry Hill West: Farmment patches of pitch pine-scrub oak barrens are interspersed with restored native prairies throughout this region. Dune top views provides beautiful vistas to the south and west. Red Trail - 1.4 miles

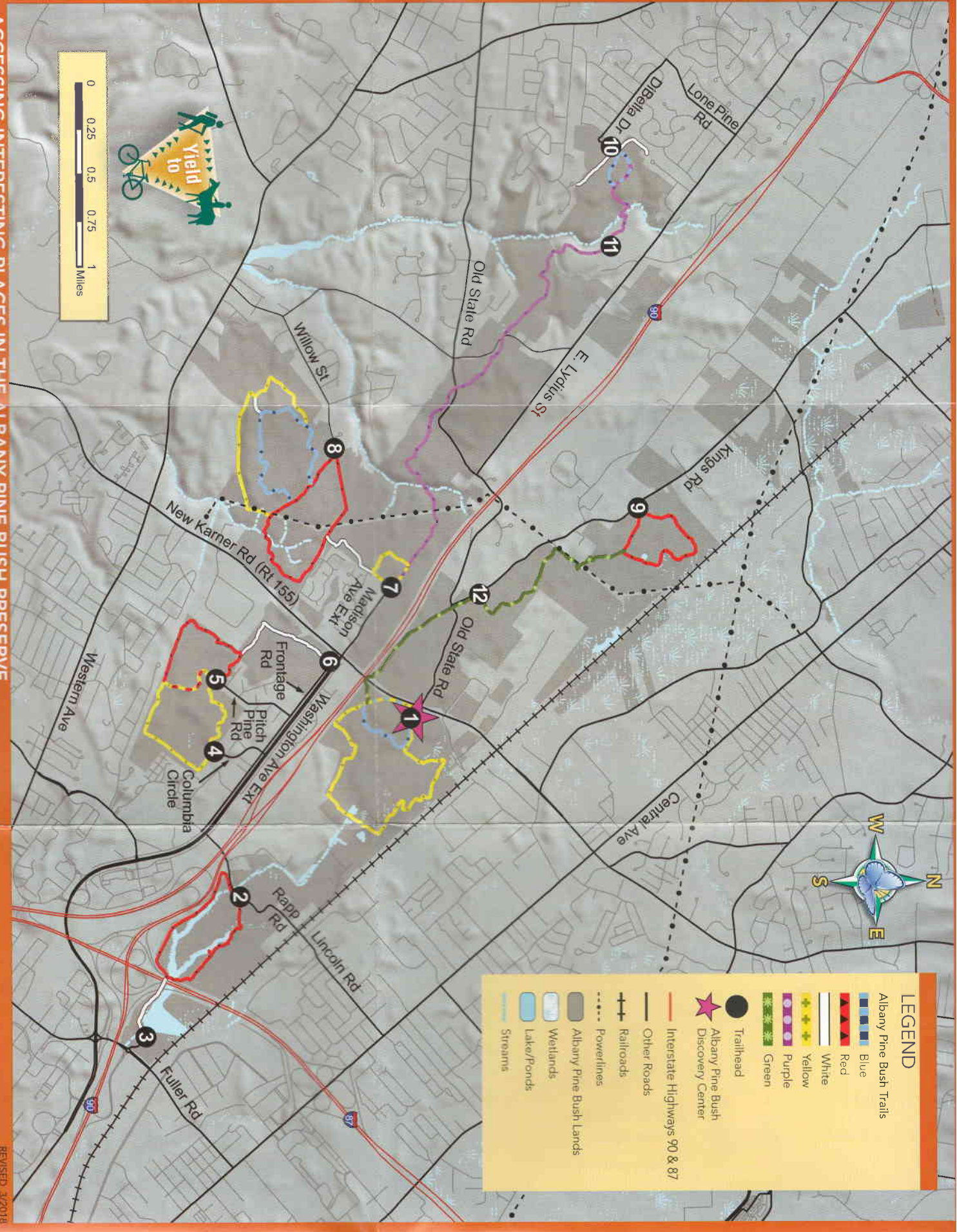
9. Kings Highway Barrens: A loop trail lets visitors enjoy both native pitch pine-oak forests and highly invasive black locust forests as well as the native prairies found in this region. Red Trail - 1.2 miles, Green Trail - 2.1 miles

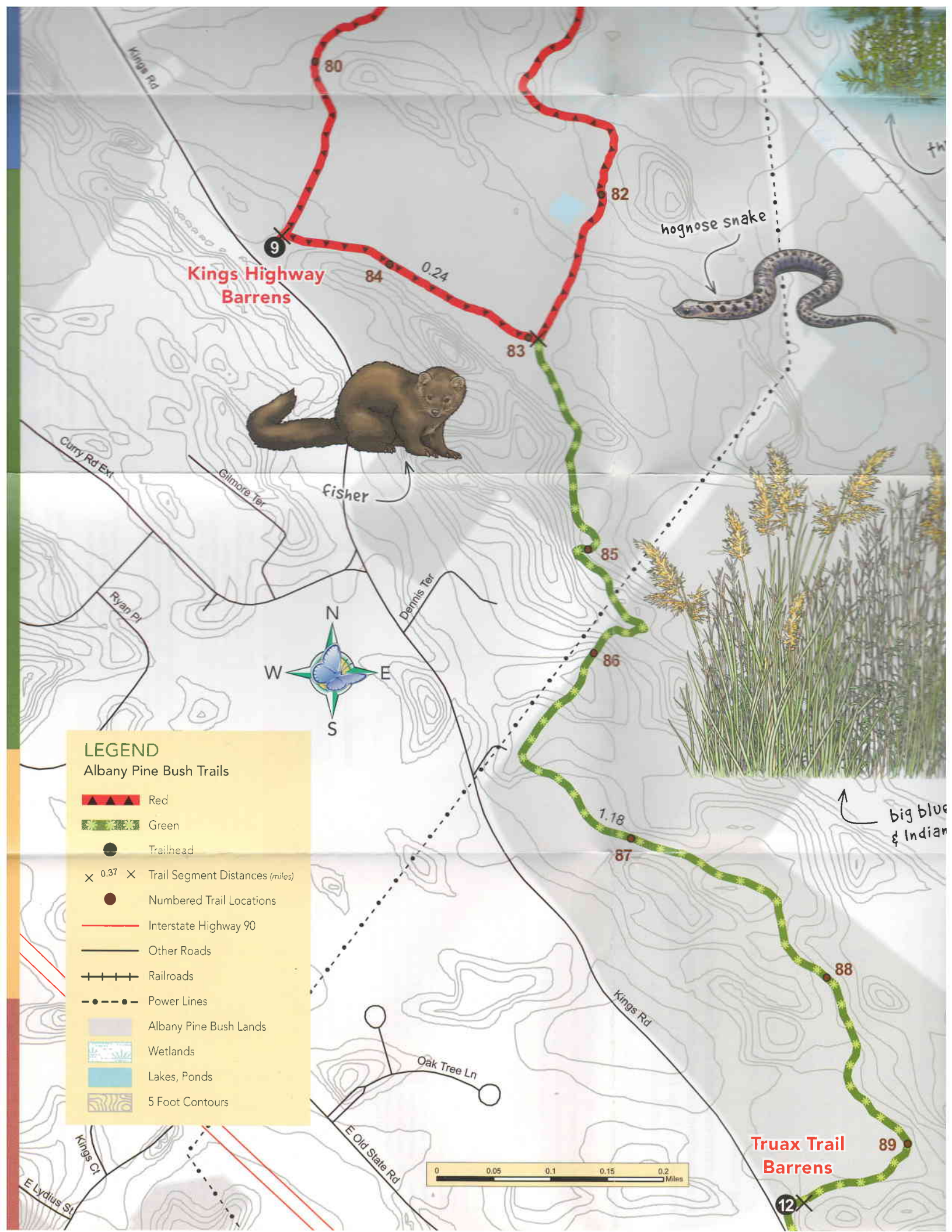
10. Hunger Kill Barrens: Portions of this trail have been highly disturbed in



LEGEND

- Albany Pine Bush Trails
 - Blue
 - Red
 - White
 - Yellow
 - Purple
 - Green
- Trailhead
- Albany Pine Bush Discovery Center
- Interstate Highways 90 & 87
- Other Roads
- Railroads
- Powerlines
- Albany Pine Bush Lands
- Wetlands
- Lake/Ponds
- Streams





Kings Highway Barrens

Truax Trail Barrens

hognose snake

fisher

big blue & Indian

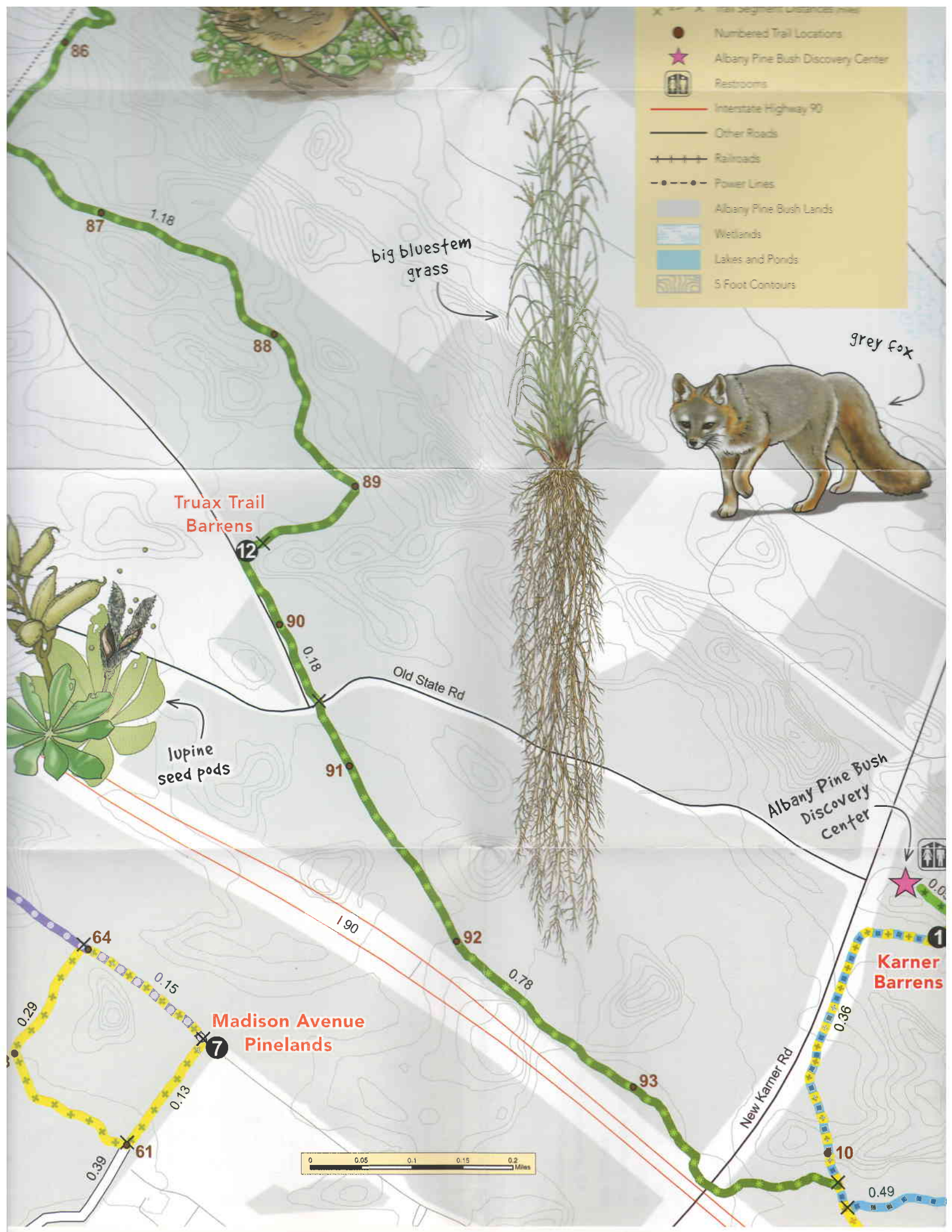
LEGEND

Albany Pine Bush Trails

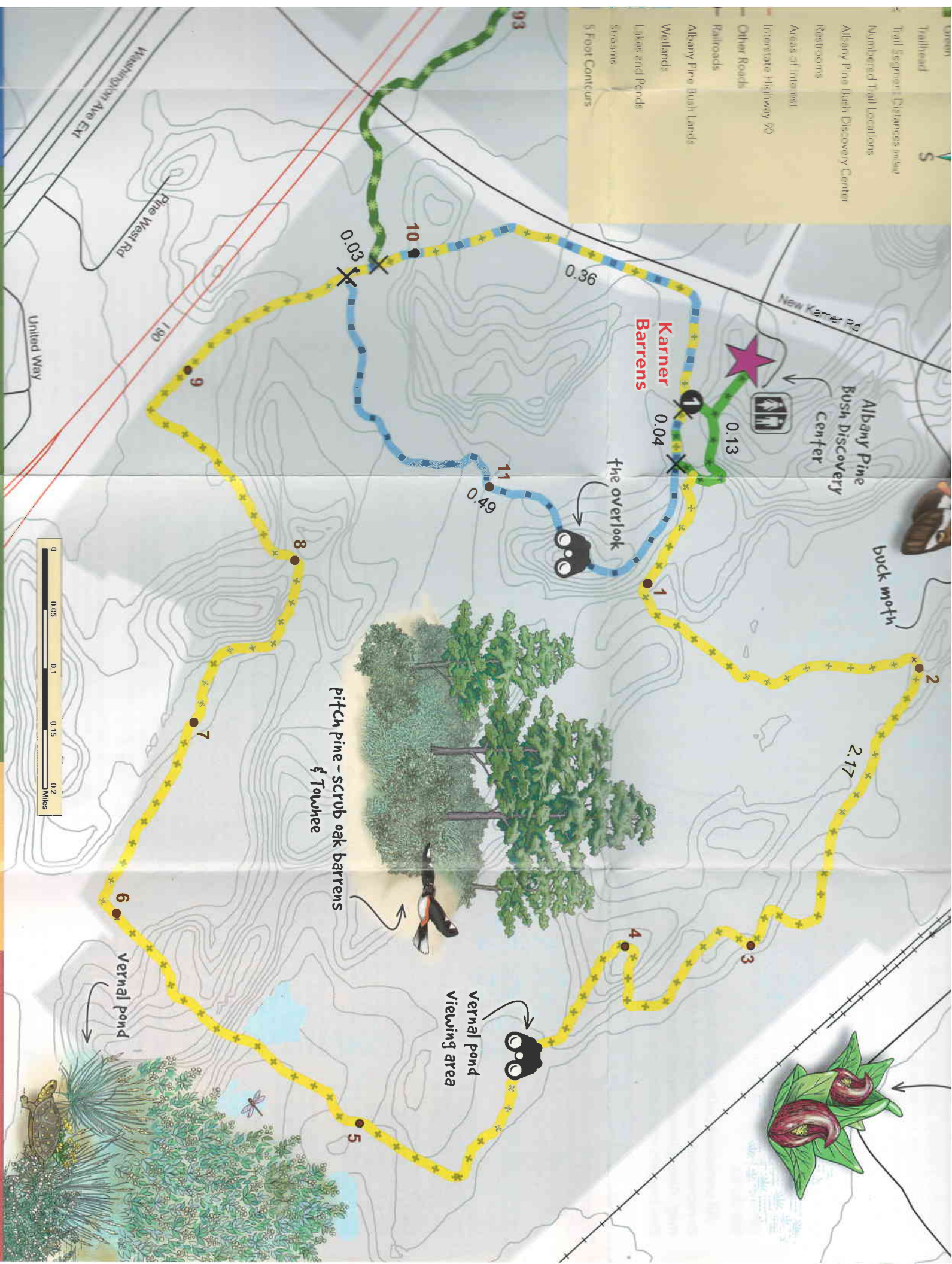
- Red
- Green
- Trailhead
- Trail Segment Distances (miles)
- Numbered Trail Locations
- Interstate Highway 90
- Other Roads
- Railroads
- Power Lines
- Albany Pine Bush Lands
- Wetlands
- Lakes, Ponds
- 5 Foot Contours



- Numbered Trail Locations
- ★ Albany Pine Bush Discovery Center
- 🚻 Restrooms
- 🛣 Interstate Highway 90
- Other Roads
- 🚊 Railroads
- ⚡ Power Lines
- 🌿 Albany Pine Bush Lands
- 💧 Wetlands
- 🌊 Lakes and Ponds
- 📏 5 Foot Contours



- Green
- Trailhead
- Trail Segment Distances (miles)
- Numbered Trail Locations
- Albany Pine Bush Discovery Center
- Restrooms
- Areas of Interest
- Interstate Highway 90
- Other Roads
- Railroads
- Albany Pine Bush lands
- Wetlands
- Lakes and Ponds
- Streams
- 5 Foot Contours



buck moth

Albany Pine Bush Discovery Center

New Karter Rd

Karter Barrens

the overlook

pitch pine - scrub oak barrens & Towhee

vernal pond viewing area

vernal pond

