

**Travelers Rest Bike
13/25/32/37K - Y2737©2022**

The UpState PathFinders Volksmarch Club of Greenville, SC., and only South Carolina member of AVA: America’s Walking Club. We welcome you to our Bike Year-Round Event (YRE) and we thank you for taking interest in one of our events. This event is rated 3A and begins about one mile north of Travelers Rest City limits. Start/Finish is in the parking lot to the right of Ingles Market, 1500 Geer Hwy, Travelers Rest, SC 29690. The Swamp Rabbit Trail is a 22-mile multi-use (walking and bicycling) greenway that traverses parallel to the Reedy River, an old railroad corridor, and City parks to connect Travelers Rest with the City of Greenville, South Carolina. Part of the Swamp Rabbit Trail will go through the heart of the new Unity Park that had a Grand Opening Day, May 19, 2022. Lots of opportunities to stop for something to eat or to quench your thirst.

Bike Registration:

Registration takes place online using that AVA Online Start Box, on my.ava.org. Follow the instructions provided to create a user account and sign the AVA waiver (one time). Instructions for payment are also included. Download the directions and print as needed. The POC does not provide event directions or accept alternate payment methods.

Bike Completion and Bike Credit

Once you have physically completed the walk, please login to your Online Start Box account and select the “Maps / Finish” tab. Use the displayed entry form to submit the date and distance of your walk as well as select applicable AVA Special Programs to generate stamped “virtual” start cards that you may later choose to print out.

Table of Contents

Use the following table to guide what portion of this document you may wish to print out.

CONTENTS	PAGE
Introduction, Bike Registration, Bike Completion and Bike Credit, Table of Contents	1
Swamp Rabbit Trail & Unity Park History	2
Travelers Rest, Driving Directions, Restrooms, Emergency numbers, Bike instructions	3
Travelers Rest written directions for full 13/26/32/37 Km route	4
Special Programs for Travelers Rest Bike, Listing of UpState PathFinders’ YRE’s (Year-Round-Events) & TE’s (Traditional Events)	5
Travelers Rest 13/25/32/37Km maps combined	6
Unity Park route map	7

History of Prisma Swamp Rabbit Trail & Unity Parks

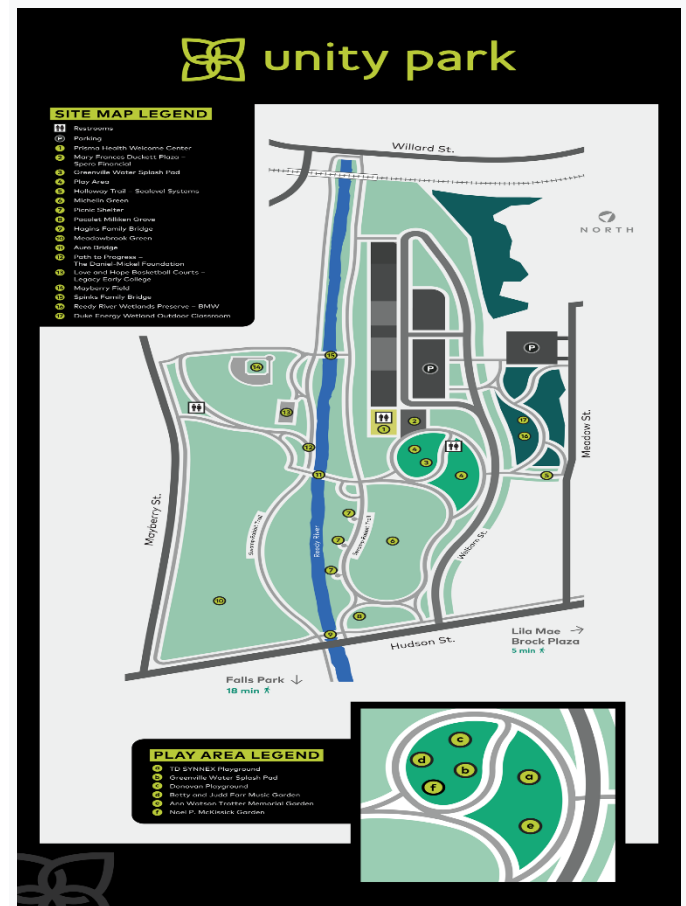
When you're in Travelers Rest, you're in the most bike-friendly place on earth. We've got bikes everywhere and there's no wonder why. The Prisma Health Swamp Rabbit Trail, a 22-mile, multi-use greenway runs along Main St in Travelers Rest connecting to nearby Greenville.

You'll find plenty of benches and gazebos along the trail, as well as some terrific trail-side restaurants to rest and refuel. Don't have a bike? Rent one from [Sunrift Adventures](#), an outdoor outfitter conveniently located near the start of the trail at 1 Center St. in Travelers Rest.

The curiously named Swamp Rabbit Trail follows the former right-of-way of what was once the Greenville & Northern Railway, a short line running north from Greenville, South Carolina. The history of the G&N, dates to the late 19th century, and from these early years, it struggled to earn sustained profits. Like most railroads of this period, it had grand visions of running hundreds of miles between Georgia and Tennessee. Lack of funding and financial support ultimately saw fewer than 30 miles completed. Eventually, the G&N settled into moving timber products and later acquired other forms of traffic, but throughout the course of its history, never moved substantial levels of freight. By the 1990s, declining revenue left the railroad with an uncertain future, and the property was officially abandoned during the mid-2000s.

The city of Greenville has held a long history with trains: the large and powerful Southern Railway, Atlantic Coast Line (through subsidiary Charleston & Western Carolina), and profitable interurban Piedmont & Northern (electrically operated) all served the town. And then there was the tiny Greenville & Northern Railway, a humble short line only a fraction of the size of its counterparts. The system dates to the 1880s as the Carolina, Knoxville & Western Railroad (CK&W), incorporated by a group of investors hoping to connect Augusta, Georgia, with Knoxville, Tennessee, via Greenville. In total, the system would have stretched roughly 300 miles, and such grand hopes were not uncommon during the era of frenzied railroad construction. Hundreds of similar projects across the country were conceived at that time, many forgotten to history because of the great expense and lack of financial support.

Unity Parks



A PARK 100+ YEARS IN THE MAKING

In the early 20th century, the Municipal League of Greenville commissioned nationally known landscape architect Harlan Kelsey to imagine and recommend improvements and projects that would beautify the city.

His recommendations were published in 1907 in a report called, "Beautifying and Improving Greenville, South Carolina," which identified a series of potential parks along the Reedy River. One would become Cleveland Park less than 20 years later. Another would eventually become Falls Park nearly 100 years later. The report also identified the current Unity Park site for a third park along the Reedy River, calling it "Hudson Athletic Fields."

Travelers Rest Bike Driving Directions

Start Point

Ingles Market, 1500 Geer Hwy., Travelers Rest, SC, 29690. Start/Finish is in the parking lot next to the open grassy field facing Ingles Supermarket.

Driving Directions

From **Greenville, SC** (18 mins/11.3 miles)

1. From I-385 N Right on Beattie Pl. N. SC/US 183 which turns into Buncombe St (US-25)
2. Right on Rutherford St. (US-25). US25 becomes US 276 and changes to Poinsett Hwy.
3. Left at Travelers Rest, N. Main St.
4. Follow N. Main St. approx. 3.5miles
5. Destination on the right.
- 6.

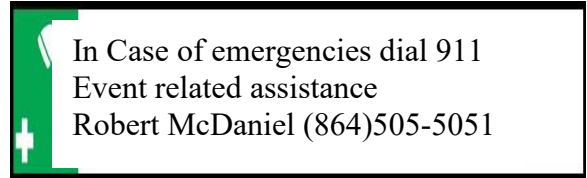
Restrooms

Public Restrooms available at Ingles, very businesses along the SRT in Travelers Rest once you reach the Welcome to Travelers Rest marquee. Furman University near the lake; Swamp Rabbit Café and several locations at Unity Park

Bike Rules & Equipment

Wear a bike helmet and bring water.
Pass on the left announcing "On your left"
loud enough for people ahead can hear.
When biking with others, single file.
Remember walkers have the right of way.
Walk bikes across roads and obey stop signs.

Emergency Numbers



Biking Instructions

These bike directions and maps may only be used in conjunction with a signed American Volkssport Association athletic waiver. All other uses are prohibited.

Travelers Rest Bike

13/25/32/37Km

Y2737



Note: Start/Finish in parking lot facing the Ingles Supermarket. Park to the far right of the parking lot facing open field. This is an out and back trail except for the 37Km portion. The trail begins at the access road.

1. **Exit** parking lot towards access road.
2. **Right** at access road.
3. **Left** at road (White Horse Rd., Ext.)
4. **Right** at road (Tate Rd.)
5. **Right** at Swamp Rabbit Trail. (**SRT**) follow paved path /**SRT** towards Greenville.
6. **Right** at 2nd traffic light/Sunrift Adventure/Center St. work your way over to the “**Welcome To Travelers Rest**” marque.

Locate **SRT** beyond the marque, following paved trail **SRT** between the two red brick columns behind the row of buildings. (Restrooms/water available between the 4 & 5 KM section.

7. Continue following the **SRT** towards Greenville, SC.

13 Km Split

*13Km Bikers turnaround at the second road crossing (Old Buncombe Rd.) after the traffic light Notice the white “Ghost Bike”, bench, and shelter on the right side of trail/tree lined before the road (Old Buncombe Rd.) Follow **SRT** back to the trailhead. Skip to step 19*

25/32 & 37Km Bikers continue with step #8.

8. Continue following the **SRT** towards Greenville, SC (Restrooms/water available at Furman University, (approx. 9km mark) – possibly closed when school closed).

25 Km Split

25Km Bikers turnaround at the road crossing (Sulphur Springs Road.) Notice the

*refurbished train car, building mural, another ghost bike and if you need a bike repair station just past the train car. Follow **SRT** back to the trailhead – skip to step #19.*

32 & 37 Km Bikers

9. Cross Sulphur Springs Rd and follow the **SRT** towards Greenville, SC.
(Restrooms/water available at the Swamp Rabbit Café (approx. 15.5Km mark)
10. Follow the **SRT** to the 2nd parking lot/road (Hampton Ave. Ext)

32 Km Split

*32Km Bikers turnaround at the road crossing (Hampton Ave. Ext. or end of 2nd parking Swamp Rabbit Café. Follow **SRT** back to the trailhead – skip to step#18*

37Km Bikers

11. Continue following the **SRT** until you reach the overhead train tracks after crossing road (Willard St.) This is one end of the new Unity Park.
12. Continue straight on the paved path under the overhead train track keeping Ready River on your right. (**restrooms/water available**)
13. Continue straight to the split “Y” where you see the multi color UNITY letter in the lawn.
14. **Right** at the split “Y” continue to the footbridge.
15. **Right** at footbridge
16. **Right** after crossing footbridge looping back through Unity Park keeping Ready River on your right following **SRT** back to the overhead train tracks.
17. **Right** at the footbridge pass the overhead train tracks.
18. **Left** after crossing footbridge then follow **SRT** to the trailhead.
19. **Left** at end of trailhead/mobile homes/Tate St.
20. **Left** at road (White Horse Rd., Ext.)
21. **Right** at access road.

End of 37Km Ride

Thank you for your interest in our bike event. For more information about other UpState PathFinders events go to www.my.ava.org/find-a-club.php.

**UpState PathFinders
Travelers Rest Bike Event
2021 Special Programs
(12-17-2019)**

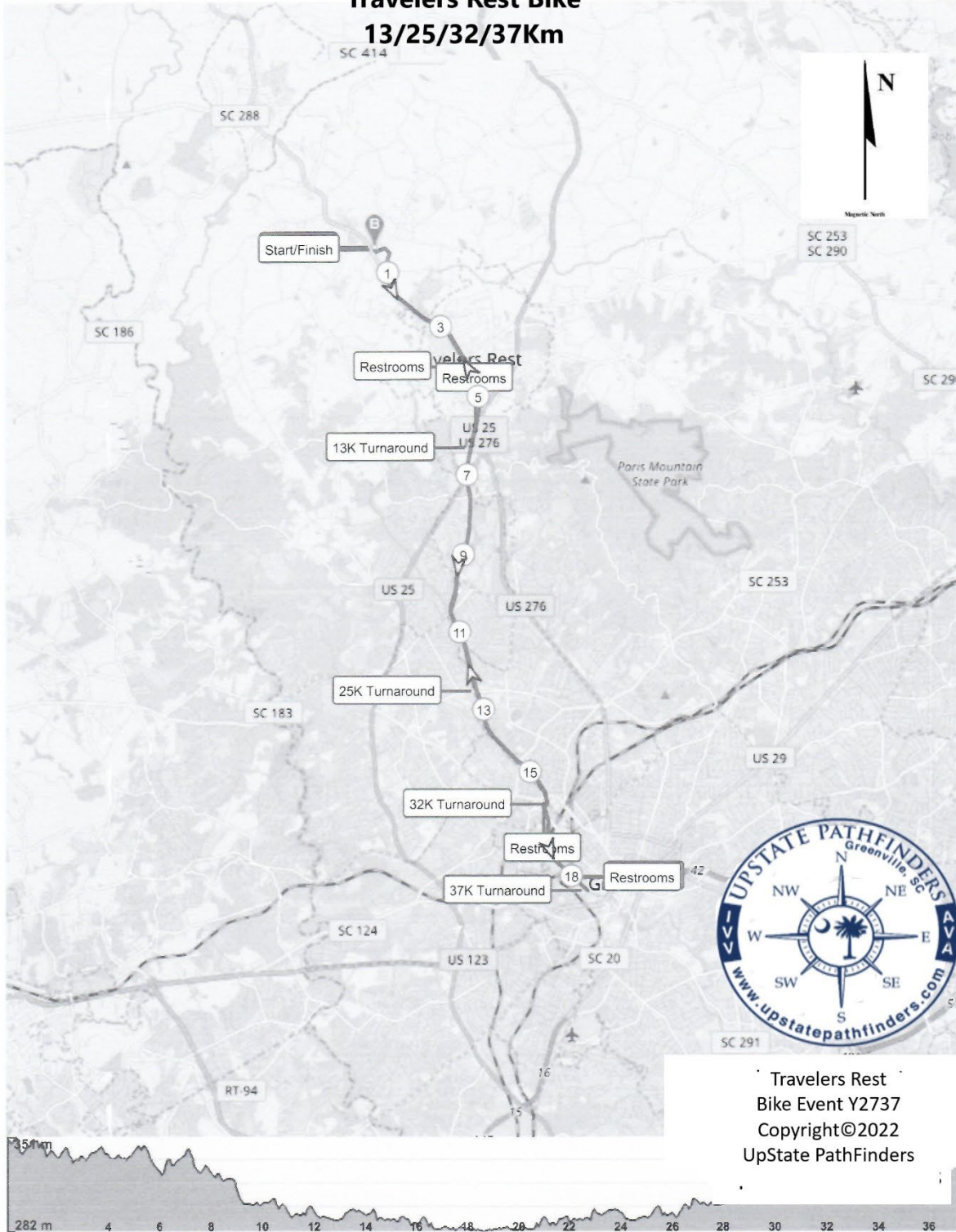
<u>Special Program</u>	<u>Locations</u>
Walking With American Veterans	Veterans Memorial Stone approx. 13-15km location left side of trail
Walking the United States (50/States/51 Capitals)	S-South Carolina.
Walking the USA A - Z	T- Travelers Rest, SC G- Greenville, SC

**UpState PathFinders
Listing of Other YRE's**

Historic Greenville 5/10K YRE	Lake Conestee Nature Preserve 5/10K YRE (OSB)
Greenville City Parks 5/10k YRE	Paris Mountain State Park 5/10k YRE (OSB)
Furman University 5/10k YRE	Historic Georgetown 5/10K (OSB)
Travelers Rest 5/10K YRE	Clemson Botanical Gardens 5/10K YRE (OSB)
Alta Vista 5/10K YRE	Historic Anderson 5/10K YRE (OSB)
Swamp Rabbit Trail 5K-50K YRE (OSB)	Picken's Doodle Trail 5/10K (OSB)
Historic Greer 6/10K YRE (OSB)	

Travelers Rest Bike

13/25/32/37Km



Unity Park Bike Loop

