



Boulder City Veterans' Memorial Park

5KM/10KM

Rated 1A

1650 Buchanan Blvd
Boulder City NV 89005

*There are restrooms
located in Park.*



IN CASE OF EMERGENCY CALL 911
Incident notification or route issues: 702-845-1550

☺ = *Special Program identifier*

Please use either the Online Start Box (OSB) or Physical Start Box (PSB) to register and complete the event. Do NOT mix and match, for example, by registering using the OSB then completing your event using the PSB or signing the PSB logsheet. The sponsoring club only receives credit for OSB participation when an OSB registration has been completed online (including stamps) by entering your participation date, distances, and any special programs using the OSB.

Driving Directions to Veterans' Memorial Park From Las Vegas:

- A. Take US 93/95/I-11 South to **Exit 15B**, Boulder City Parkway.
- B. At first light **turn right** on Veterans Memorial Drive to Buchanan Blvd.
- C. **Turn left** on Buchanan Blvd
- D. **Turn left** into Veterans' Memorial Park
- E. **Turn right** at Pratte Field sign to next roundabout; park after roundabout. Restrooms and pond will be on right side of parking lot.

From Arizona:

- A. Cross Mike O'Callaghan-Pat Tillman Memorial Bridge and take I-11, **Exit 2**, to follow Boulder City Parkway.
- B. At light **go straight** onto Buchanan Blvd.
- C. **Continue** about 1.5 miles to **turn right** into Veterans' Memorial Park
- D. **Turn right** at Pratte Field sign to next roundabout; park after roundabout. Restrooms and pond will be on right side of parking lot.

☺ **Walk with America's Veterans – Veterans Memorial Park (1st qualifier)** NOTE: This event has multiple qualifiers for this special program. You may only use one

qualifier per day/paid walk in the same book. Include date of walk with qualifier in book entry. Each qualifier may only be used once per year.

1. Facing restroom, **turn right** on sidewalk to asphalt path
2. **Turn left** on path up hill to T at fishing pond
3. **Turn right and circle** fishing pond **counterclockwise** until you cross small bridge over stream between the two ponds
4. **Turn sharp right** on next path with restroom now on left
5. **Turn right** on sidewalk with parking lot on left and the small pond on right
6. At roundabout **stay right** on sidewalk toward basketball court
7. **Turn right** on paved path (yellow post) after basketball court toward picnic pavilions
8. At first intersection **bear left** on gravel path then angle right up stone and dirt steps
9. At top of steps **circle left** up to Rotary Hill Flagpole

Enjoy view of Boulder City Municipal Airport and surrounding area from this vantage point.

10. Leaving Rotary Hill **circle counterclockwise** and take first **right** after passing flag pole on left. Note: if you pass steps again to hilltop on left you have missed right turn
11. Just past large stone on left, **turn left** onto winding path down to asphalt path
12. **Turn left** on asphalt path with pavilion on right
13. **Veer right** at Y intersection
14. **Turn right** after yellow pole (roundabout on left) to large stone memorial

☺ **Walk with America's Veterans – War Dogs Memorial Plaque (2nd qualifier)**

15. **Go left** from memorial to **Cross** street
16. **Turn right** on path **then next left**
17. **Go straight** at Y path split with stone wall on right and restrooms on left (BMX track on other side of wall)
18. At end of stone wall **turn left** on gravel path with another stone wall on your left
19. **Circle** stone garden **clockwise**

Note the veterans' memorial poem on stone after passing the Pratte Field sign and 1st left

20. **Exit circle** at left 2nd left (green utility box)

21. Cross road/path and continue to park exit at Buchanan Blvd

22. Turn right on hike/bike path along street to Veterans Memorial Drive

☺ *Walk with America's Veterans – Veterans Memorial Drive (3rd qualifier)*

23. Carefully cross Veterans Memorial Drive and continue straight to entrance of Veterans Cemetery

☺ *Walk with America's Veterans – Southern Nevada Veterans Memorial Cemetery (4th qualifier)*

24. Turn right into cemetery and continue to the wide sidewalk leading to building

25. Turn left into Memorial Garden and circle counterclockwise meandering through the various service memorials

☺ *Walk with America's Veterans – Every monument in Memorial Garden counts as separate qualifier (5th thru 32nd qualifier)*

26. As you exit the Memorial Garden at the American Legion memorial **turn right** on street
NOTE: *grass between street and stone benches on right is the cemetery's typical natural "sidewalk"*

27. At roundabout **turn right**, keeping on left side of street

28. Turn left on next sidewalk lined with trees

29. At last tree on right **turn right** onto gravel path

30. When you reach the wide gravel area **turn left** to pass through the columbarium to street

☺ *Walk with America's Veterans – Freedom Tree Plaque in roundabout ahead (33rd qualifier)*

31. Circle clockwise at roundabout passing the Committal Shelter and take next left on grass sidewalk

32. Continue to next roundabout noting airport on other side of fence

☺ *Airports, Celebrating American Flight – Boulder City Municipal Airport*

This is the third busiest airport in Nevada even though there is no commercial passenger airline service. High volume of private and tour operations due to proximity to Lake Mead and Grand Canyon.

33. Circle right to walk on grass sidewalk with street on our right

34. Keep left at next roundabout to **continue right** through parking lot with Administration Building on right toward the roundabout with monument and white flag

☺ *Walk with America's Veterans – Lest They Be Forgotten memorial (34th qualifier)*

35. At end of roundabout **cross street and angle left** on sidewalk to exit cemetery

36. CAREFULLY cross Veterans Memorial Drive and Veterans Memorial Drive Trail to re-enter Veterans Memorial Park

NOTE: No crosswalk and traffic does not stop

☺ *Rails to Trails – Veterans Memorial Drive Trail*

37. Continue on left side of road toward ball fields on left

38. Turn left on sidewalk before beach volleyball courts a short distance toward ball fields entrance to stone monument left of sidewalk.

☺ *Walk with America's Veterans – Patton Field dedicated to Shane Patton, Navy Seal (35th qualifier)*

39. Return to main sidewalk and **turn left**

40. Pass beach volleyball on left **continuing** on sidewalk

10KM walkers: Go to **step 46.**

41. 5KM walkers: **Turn right** at crosswalk after roundabout

42. Turn right on path **then immediately left**

43. Turn left at path intersection toward restrooms

44. Turn left on path in front of restrooms, splash park on left and playground on right

45. Angle left onto sidewalk after picnic pavilion circling right back to finish

46. 10KM walkers: **Turn left** on dirt path just before the War Dogs memorial and roundabout

47. Continue on dirt path/road passing ballfield on left

48. Turn right after ballfield on dirt road

49. Turn left at T intersection to **next right**

50. Walk toward stop sign at Veterans Memorial Drive (Airport entrance on other side of street)

51. Turn right on Veterans Memorial Drive Trail to traffic light

52. Cross Adams Blvd to a small memorial and flagpole

☺ *Walk with America's Veterans – BCRW Memorial (36th qualifier)*

53. After visiting the memorial return to Adams Blvd and turn left crossing Gingerwood St and Aspen Dr

54. A short distance after Aspen Dr **carefully cross** Adams Blvd at the intersection with Bristlecone Dr on right **NOTE:** No crosswalk, traffic does not stop

55. Continue straight on left side of Bristlecone Dr to end and **turn left** on Club House Drive

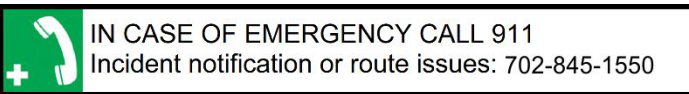
56. Continue to Buchanan Blvd and **turn right** on hike/bike path

57. After a short distance **angle right** on Veterans Memorial Park path keeping Fishing Pond on right and return to finish in parking lot

Special Programs also eligible on this walk:

☺ *Walk USA 50 States (NV)*

☺ *Walk USA A-Z (B)*



Be sure to log back into the OSB system (my.ava.org) to finish/complete your online registration after doing the walk. The OSB system does not deduct any walking fee from a walker's Event Bank until they have submitted walk completion info including the date the event was walked, the distance walked, and the selection of applicable special programs that walker is participating in. (NOTE: The \$2 fee for event PDF Download is deducted from the user's Event Bank when the pdf is downloaded. This prepaid fee is applied against the credit fee(s) at the OSB "Finish Table" when you submit the walk completion info. However, the \$2 "coupon" for the downloaded PDF expires 60 days from download.)

Member of



"Walk With America's Veterans"
An America's Walking Club Special Program

Add to your *Walk with America's Veterans* program books with these other Las Vegas High Rollers & Strollers events.

Y1880 Boulder City Historic District:

- #1 Veterans Memorial Drive (2K Loop only)
- #2 Southern Nevada Veterans Home (2K Loop only)
- #3 American Legion Post 31 (10K only)
- #4 Elks Lodge Armed Forces Display (10K only)
- #5 Freedom Tree Plaque (10K Only)

Y1200 Downtown Las Vegas

- #1 US 95 Veterans Memorial Highway
- #2 North Veterans Memorial Drive
- #3 American Legion Post 8 (on 3K Loop)
- #4 Nevada State Veterans Memorial (on 3K Loop)
- #5 Gold Star Family Memorial (3K Loop)

Y0474 University Nevada Las Vegas

- #1 UNLV Memorial (10K only)
- #2 Freedom Tree plaque (10K only)

Y2600 Downtown Summerlin (OSB): Veterans Memorial Leisure Service Center (on Alt 5K end)

Y1809 Hoover Dam:

- #1 O'Callaghan-Tillman Memorial Bridge
- #2 Nevada I-11 is Purple Heart Highway

Y1398 River Mountains Loop Trail Bike:

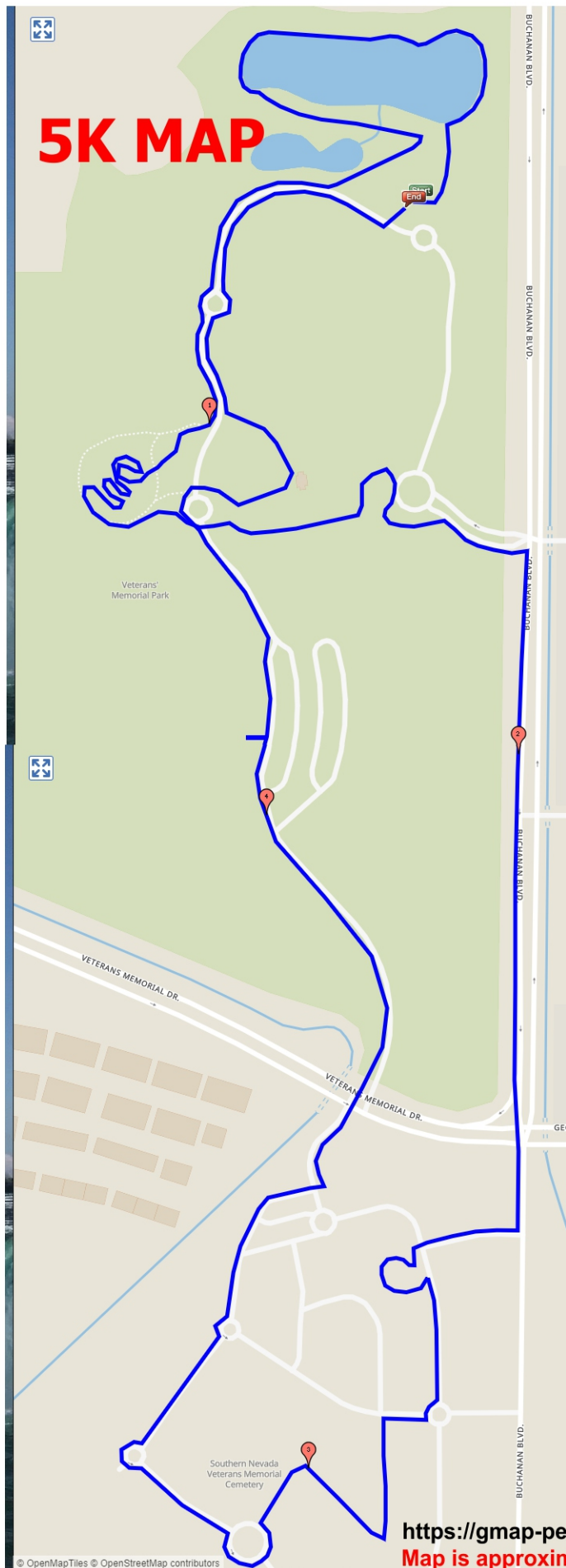
- #1 Southern Nevada Veterans Home (mm 31.5)
- #2 Nevada I-11, Purple Heart Highway, between mm 0 and mm 1.5)

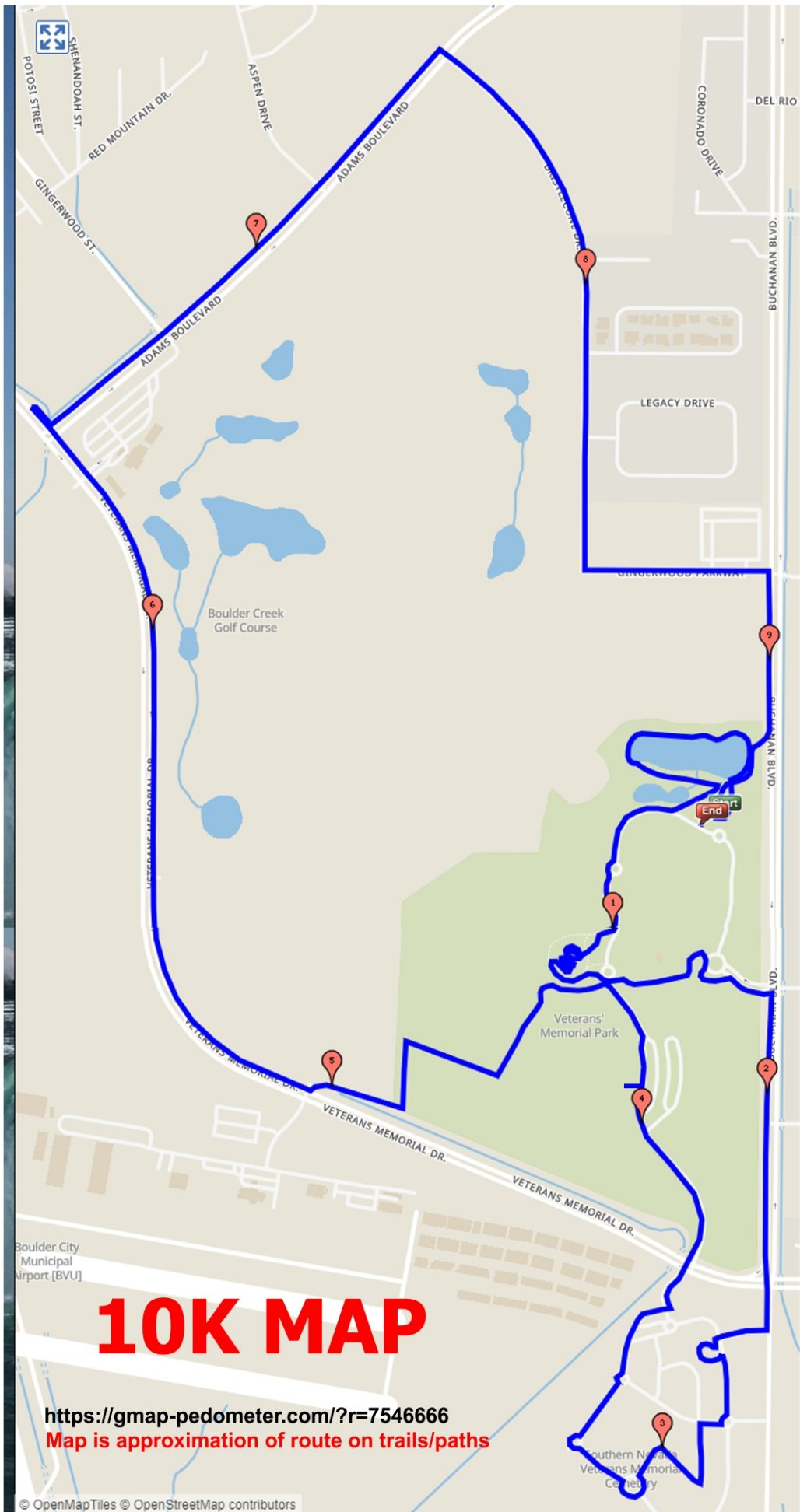
Y2706 St. George UT:

- #1 Virgin River Walk: I-15 Veterans Memorial Highway
- #2 Cemetery Veterans Memorial Plaza

Y3001 Henderson Union Pacific Railroad Trail Bike:

- #1 Gold Star Memorial
- #2 American Legion Post 40
- #3 I-11 Purple Heart Highway





10K MAP

<https://gmap-pedometer.com/?r=7546666>

Map is approximation of route on trails/paths

© OpenMapTiles © OpenStreetMap contributors