



Lacey – Wild and Woodsy in WA – Staircase Hike

YRE# 2893

Distances: 5K, 11K

Difficulty Rating: 2C

The Staircase Rapids hike is one of the most popular and accessible hikes in the Olympic National Park. Because it is a national park, dogs are not allowed on this trail. The trail wanders through beautiful forest the entire route, so be sure to carry warm clothing. In addition, sturdy boots or walking shoes are also recommended because this trail can be wet in the spring. You will begin your hike passing the Olympic National Park office. Just before crossing the North Fork Skokomish River on a solid bridge, you will find pit toilets on the left. These are the only restrooms on the route. This route follows the swift moving water of the North Fork Skokomish River as it thunders over a series of boulder-strewn cascades, and during the spring snowmelt the route is especially impressive. The surrounding old-growth forest provides a beautiful backdrop to this captivating hike.

Walk Registration

Register online using the AVA Online Start Box at my.ava.org. Follow the instructions provided to create a user account and sign the AVA waiver (one time). Instructions for payment are also included. Download the directions and print as needed.

Walk Completion and Walk Credit

Once you have physically completed the walk, please login to your Online Start Box account; click on the “My Start Box” tab; then the “Finish Table” tab; then click on “Go to Finish Table” button for the event you have completed. Use the displayed entry form to submit the date and distance of your walk as well as select applicable AVA Special Programs to generate a stamped “virtual” insert card that you may print.

Table of Contents:

Use the following table to guide what portion of this document you may wish to print:

Section Contents	Pages
Introduction, Walk Registration/Completion, and Table of Contents	1
Driving and Walking Directions 5K	2-3
Map 5K	4
Driving and Walking Directions 11K	5-6
Map 11K	7
AVA Special Programs applicable to Staircase Hike	8



© Capitol Volkssport Club, Olympia, WA 2022. These walk directions and map may only be used in conjunction with a signed American Volkssport Association athletic waiver. All other uses are prohibited.

Please use either the Online Start Box (OSB) or Physical Start Box (PSB) to register and complete the event. Do NOT mix and match, for example, by registering using the OSB then completing your event using the PSB nor signing the PSB log sheet. The sponsoring club only receives credit for an OSB participation when an OSB registration has been completed online by entering your participation date, distances, and any special programs using the OSB.

**WILD AND WOODSY –
STAIRCASE HIKE
YRE #2893**

In case of emergency: Dial 911
Event related Assistance:
Carol Froelich (360) 292-0830

Distance: 5K
Difficulty level: 2C
ESVA Challenges: 39 Counties (Mason);
AVA Challenges: Walking the USA A-Z;

Start Point: Staircase Ranger Station, (address: NF-24, Hoodspport, WA)
Lat: 47.5159, Lng: -123.3312.

Driving Directions: Driving Directions to Staircase Ranger Station, (address: NF-24, Hoodspport, WA)

I-5 South Exit #104 for US 101 N toward Aberdeen/Port Angeles for 5.9 miles. Take US 101 N exit toward Shelton/Port Angeles. Continue 29 miles on 101 N to Hoodspport. From Hoodspport, turn left onto SR 119/N Lake Cushman Rd. Drive a little more than nine miles to where SR 119 'T's. Turn left here and follow SR 119/NF-24. Drive 1.7 miles to where the pavement ends. The road continues as gravel and in approximately 5 miles arrives the Staircase Ranger Station. Look for the large parking lot on your right, across from the campground.

Parking Pass: America the Beautiful Pass required to park in the Olympic National Park. Temporary parking passes are also available for purchase (\$30) at the Olympic National Forest Office in Olympia: 1835 Black Lk Blvd SW Olympia, WA 98512 (360) 956-2402

Miscellaneous: Pets are NOT allowed on the trail. Pit toilets are available at start. Bring water and snacks.

1. **RIGHT** from the parking area, passing the Staircase Ranger Station on the right and pit toilet on the left. (This is the only restroom on the trail.)
2. **STRAIGHT** to cross the North Fork Skokomish River on a solid bridge. You will follow the Staircase Rapids Loop Trail pass side trails to the Shady Lane Trail and the small green structure that houses a hydro plant which powers the ranger station.
3. **LEFT** on short trail to view the windfall that was once one of the largest cedar trees on the trail.
4. **TURN AROUND** and return to the main trail.
5. **LEFT** onto main Staircase Rapids Trail.
6. **STRAIGHT** on the Staircase Rapids trail as it winds gently up and down along the North Fork Skokomish River. Several side trails lead to closer viewing areas of the river. (Always return to the main trail.)
7. **RIGHT** at trail junction following the Staircase Rapids Loop Trail over a suspension bridge crossing the North Fork Skokomish River.
8. **LEFT** at the trail junction with the North Fork Skokomish Trail.

9. **STRAIGHT** on the North Fork Skokomish Trail to the Slide Camp sign. (The Slide Camp sign is a small sign on the right side of the trail.)

10. ***Optional Detour: see below

11. **TURN AROUND** and retrace your route, continuing straight on the North Fork Skokomish Trail.

12. **STRAIGHT** on North Fork Skokomish Trail passing the junction with the Staircase Loop Trail. Do not turn right and cross the bridge.

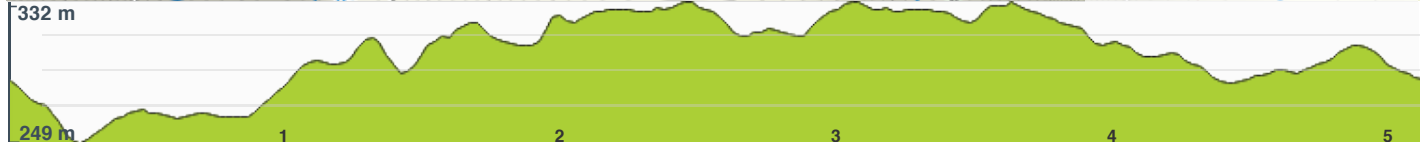
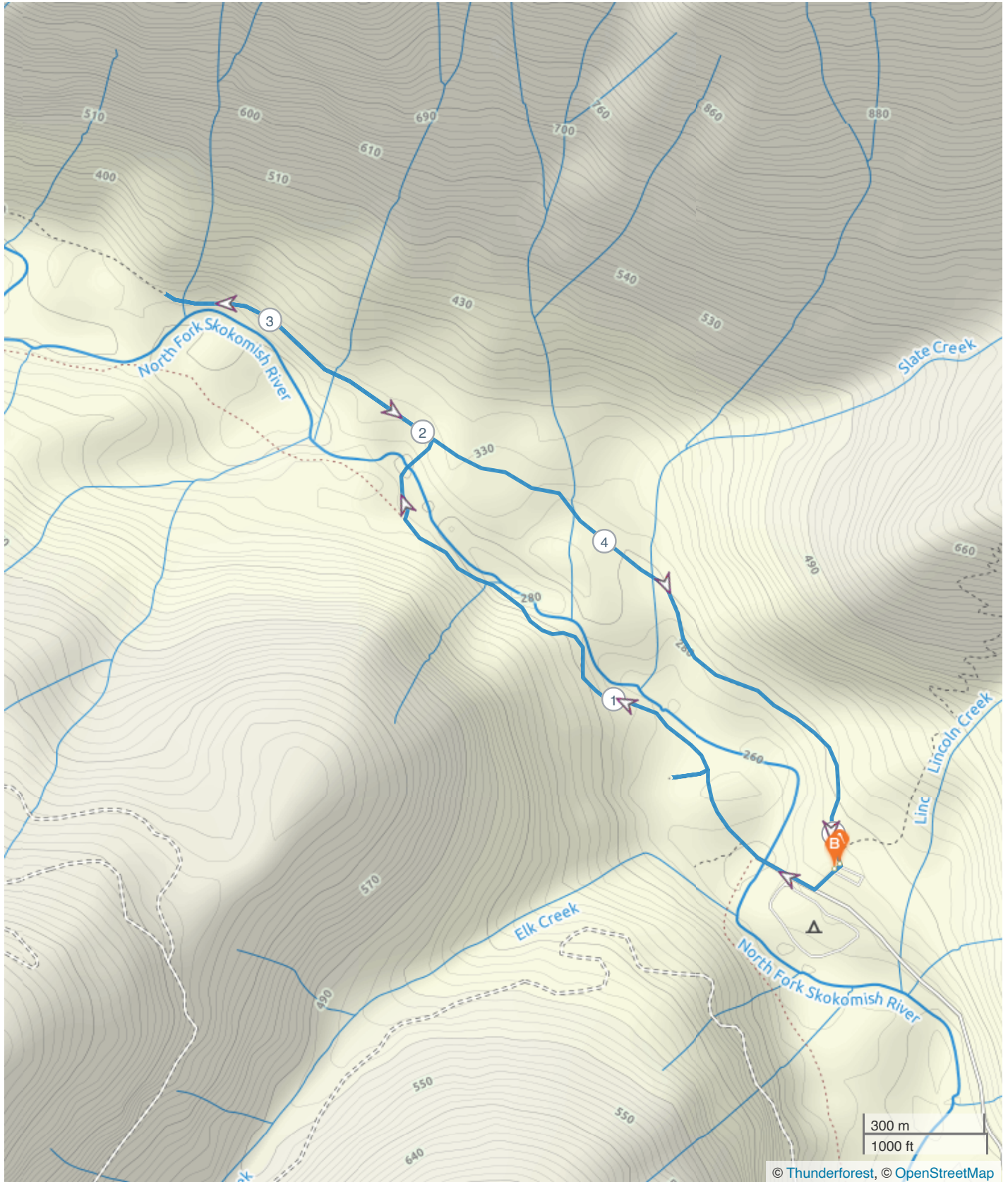
13. **CONTINUE** on North Fork Skokomish Trail to parking and Staircase Ranger Station.

*****Optional Detour: LEFT** down the small trail to Slide Camp through brush and along a rough trail to the river bank. Approximately .20 miles.

Thank you for participating in our walk!

Don't forget to "finish/complete" your online registration.

Staircase Rapids & N Fork Skokomish To Slide Camp





© Capitol Volkssport Club, Olympia, WA 2022. These walk directions and map may only be used in conjunction with a signed American Volkssport Association athletic waiver. All other uses are prohibited.

Please use either the Online Start Box (OSB) or Physical Start Box (PSB) to register and complete the event. Do NOT mix and match, for example, by registering using the OSB then completing your event using the PSB nor signing the PSB log sheet. The sponsoring club only receives credit for an OSB participation when an OSB registration has been completed online by entering your participation date, distances, and any special programs using the OSB.

**WILD AND WOODSY –
STAIRCASE HIKE
YRE #2893**

In case of emergency: Dial 911
Event related Assistance:
Carol Froelich (360) 292-0830

Distance: 11K
Difficulty level: 2C
ESVA Challenges: 39 Counties (Mason);
AVA Challenges: Walking the USA A-Z;

Start Point: Staircase Ranger Station, (address: NF-24, Hoodspport, WA)
Lat: 47.5159, Lng: -123.3312.

Driving Directions: Driving Directions to Staircase Ranger Station, (address: NF-24, Hoodspport, WA)

I-5 South Exit #104 for US 101 N toward Aberdeen/Port Angeles for 5.9 miles. Take US 101 N exit toward Shelton/Port Angeles. Continue 29 miles on 101 N to Hoodspport. From Hoodspport, turn left onto SR 119/N Lake Cushman Rd. Drive a little more than nine miles to where SR 119 'T's. Turn left here and follow SR 119/NF-24. Drive 1.7 miles to where the pavement ends. The road continues as gravel and in approximately 5 miles arrives the Staircase Ranger Station. Look for the large parking lot on your right, across from the campground.

Parking Pass: America the Beautiful Pass required to park in the Olympic National Park. Temporary parking passes are also available for purchase (\$30) at the Olympic National Forest Office in Olympia: 1835 Black Lk Blvd SW Olympia, WA 98512 (360) 956-2402

Miscellaneous: Pets are NOT allowed on the trail. Pit toilet is available at the start. Bring water and snacks.

1. **RIGHT** from the parking area, passing the Staircase Ranger Station on the right and pit toilet on the left. (This is the only restroom on the trail.)
2. **STRAIGHT** crossing the North Fork Skokomish River on a solid bridge. You will follow the Staircase Rapids Loop Trail pass side trails to the Shady Lane Trail and the small green structure that houses a hydro plant which powers the ranger station.
3. **LEFT** on short trail to view the windfall that was once one of the largest cedar trees on the trail.
4. **TURN AROUND** and return to the main trail.
5. **LEFT** onto main Staircase Rapids Trail.
6. **STRAIGHT** on the Staircase Rapids trail as it winds gently up and down along the North Fork Skokomish River. Several side trails lead to closer viewing areas of the river. (Always return to the main trail.)
7. **RIGHT** at a trail junction following the Staircase Rapids Loop Trail over a suspension bridge crossing the North Fork Skokomish River.
8. **LEFT** at the trail junction with the North Fork Skokomish Trail for 3.8 K passing a sign Slide

Camp

9. **STRAIGHT** on the North Fork Skokomish Trail to a junction with the Flapjack Lakes Trail on the right. Stop here. There is a sign for Flapjack Lakes Trail on the right and a large log on the right.

10. **TURN AROUND** at the Flapjack Lakes trail junction and retrace your route, continuing straight on the North Fork Skokomish Trail.

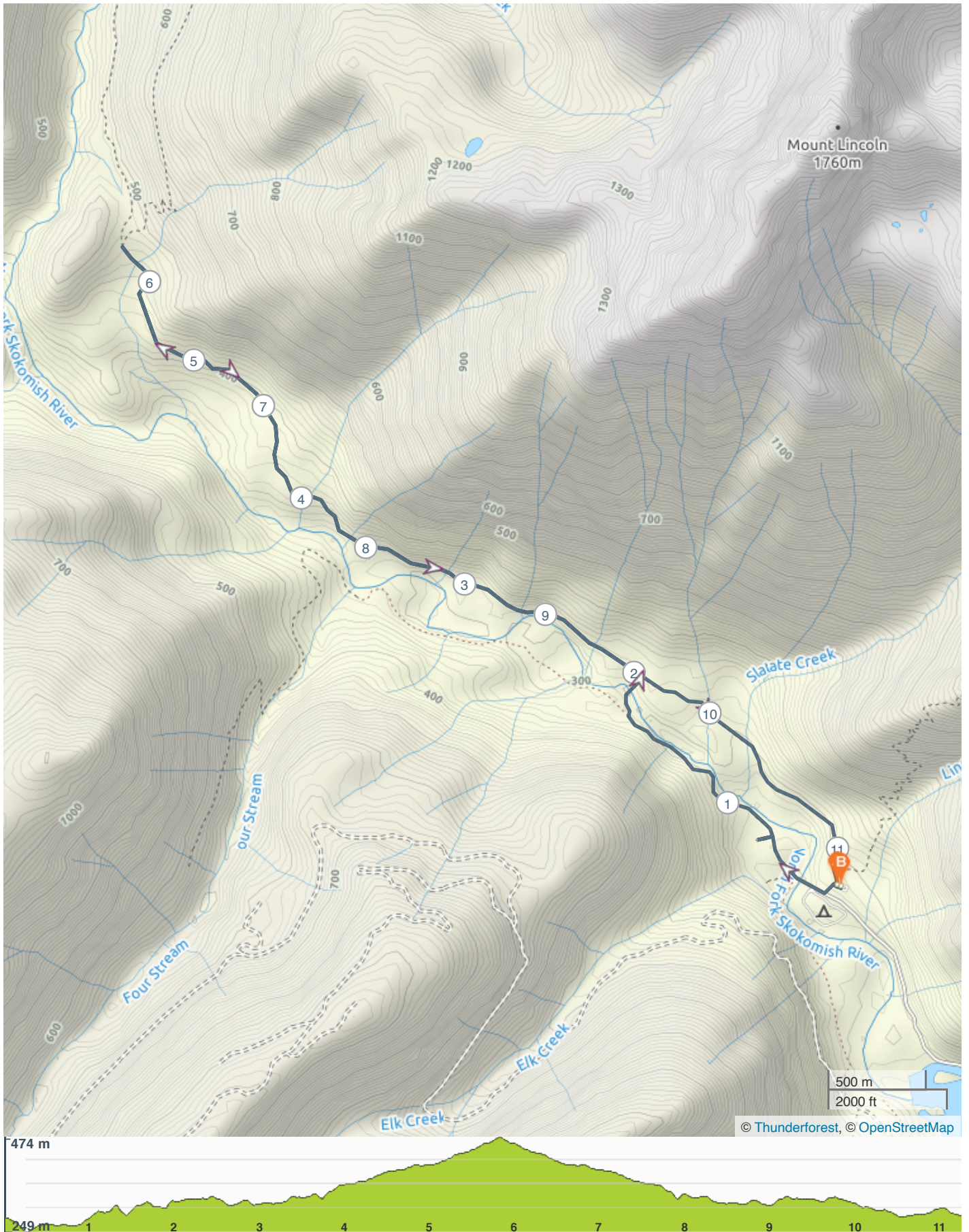
11. **STRAIGHT** passing the junction with the Staircase Rapids on the right.

12. **STRAIGHT** to the Staircase parking area.

Thank you for participating in our walk!

Don't forget to "finish/complete" your online registration.

Staircase & N Fork Skokomish 11 K



WALK NAME /NUMBER W&W – Staircase Rapids Trail Hike/2893				
ESVA SPECIAL PROGRAMS				
Counties [ongoing]	Mason County			
Historic Train Stations [2019-2021]				
Rails to Trails [2020-2022]				
Frontline Heroes [2021-2024]	MEDICAL CENTERS	DELIVERY SERVICES	SUSTENANCE PROVIDERS	ESSENTIAL SERVICES
On the Road Again [2022-2025]	MULTI-DAY EVENT	HOLIDAY/TRADITIONAL EVENT OR FESTIVAL EVENT		“NEW TO ME” EVENT
OREGON SPECIAL PROGRAMS				
AVA SPECIAL PROGRAMS				
50 STATES/51 CAPITALS	[ONGOING]			
A-Z (Walking the US A-Z)	[ONGOING]	Hoodsport		
AIRPORTS-CELEBRATE FLIGHT	[2020-2022]			
BORDER CROSSING	[2014-2023]			
CAROUSELS ACROSS AMERICA	[2019-2021]			
GREAT LAKES	[2021-2024]			
LITTLE FREE LIBRARIES	[2019-2021]			
MAYFLOWER - 400TH ANNIVERSARY	[2020-2022]			
RAILS TO TRAILS	[2022-2025]			
ROCKIN’ AROUND THE CLOCK	[2020-2022]			
TOWN HALL/CITY HALL	[2020-2024]			
WALKING WITH AMERICAN VETERANS	[2021-2024]			