



**The Texas County Walkers
2021 WALLER County
10 km and 6 km Walks
HEMPSTEAD, TEXAS**



Hempstead is 50 miles west of Houston and home to Prairie View A&M University. Once the top watermelon shipper in the country, Hempstead still holds an annual watermelon festival in July. The economy is based around shipping and county government. Walks include Post Office, schools, parks, veterans' memorial, and a Little Free Library.

After your walk, you may wish to take a side trip to the Dilorio Farmers Market (750 US-290 Business) or to the Bluebonnet Herb Farm & Café (2105 13th St.).

Walk Completion and Credit:

When you finish your walk(s), be sure to log back in to the OSB System and enter your participation date, distances, and Special Programs (if applicable).

Start Point Address and Driving Directions:

Waller County Courthouse at 836 Austin St, Hempstead, TX 77445. East- or westbound on US-290, take TX Hwy 6 / 10th Street south to Wilkins St. Turn left on Wilkins and park in the lot on your right, on the west side of the Courthouse.

Restrooms and Parking:

There is a Valero/Circle K at the northeast corner of 10th and Austin streets, ½ block west of the Courthouse. There is a McDonalds on the southwest corner of the same intersection. There is ample, free parking in the lot on the west side of the Courthouse.

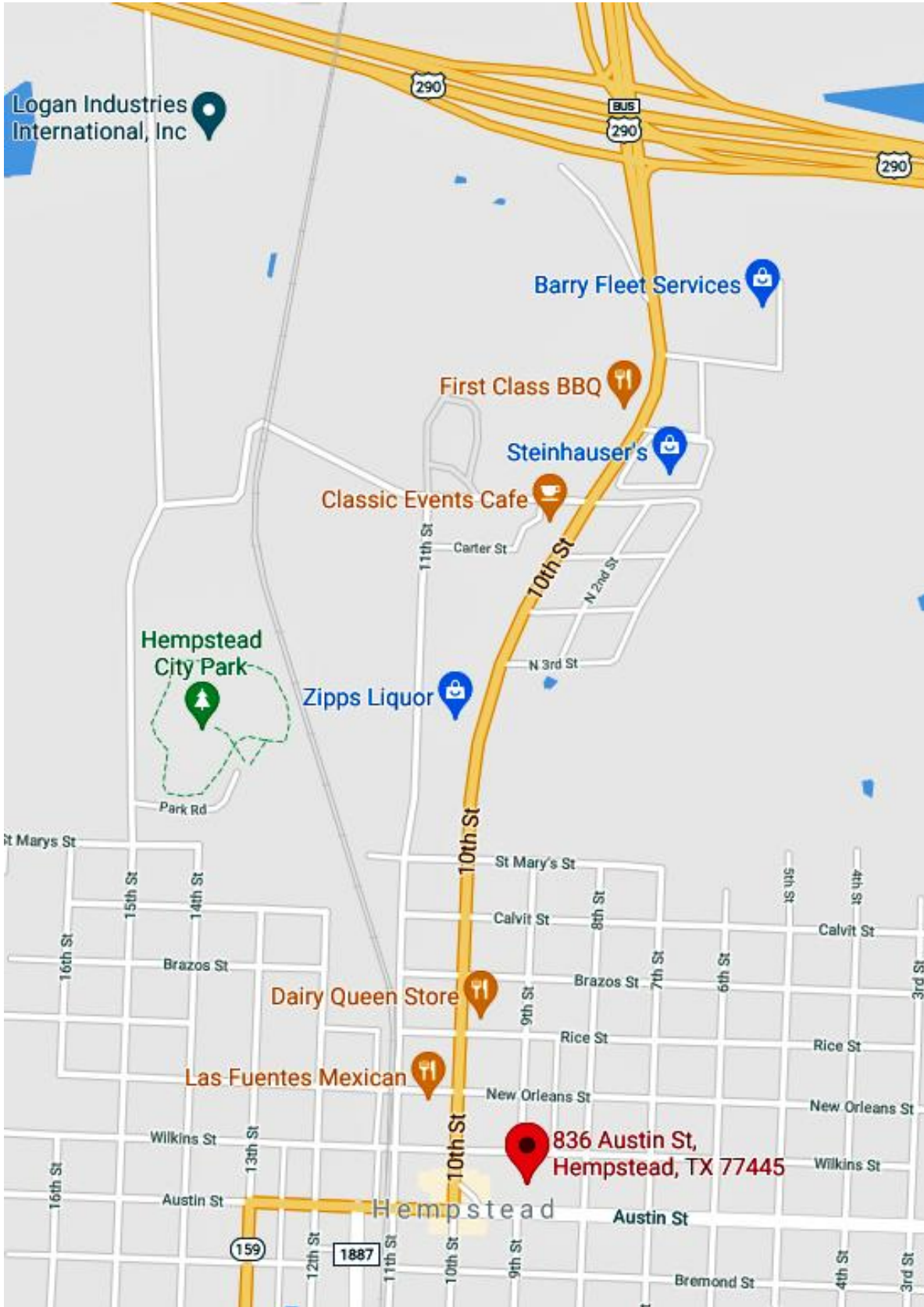
Special Programs:

City Hall
Rockin' Around The Clock
Walking With American Veterans

Table of Contents:

Section	Page
Walk Details, Table of Contents	1
Map of Start Point Location	2
10 km Walk Instructions	3
10 km Route Map	4
6 km Walk Instructions	5
6 km Route Map	6

START POINT LOCATION



TEXAS COUNTY WALKERS – 2021 WALLER COUNTY 10 km WALK in HEMPSTEAD, TX.

The walk starts at the Waller County Courthouse at 836 Austin St, Hempstead, TX 77445. East- or westbound on US-290, take TX Hwy 6 / 10th Street south to Wilkins St. Turn left on Wilkins and park in the lot on your right, on the west side of the Courthouse.

10 KM INSTRUCTIONS

1. Facing the side of the Courthouse read the Historical Marker just to the left.
2. **LEFT** 1/3 block to Wilkins St.
3. **RIGHT** on Wilkins to the historic monument behind the courthouse.
4. **CONTINUE around** to the front of the Courthouse, turning **RIGHT** on Austin St. to the Clock Tower.
5. **CONTINUE west** on Austin St. for 4 blocks to 13th St.
6. **RIGHT** on 13th St. for 1 block to Wilkins St.
7. **LEFT** on Wilkins for 1 block to 14th Street.
8. **RIGHT** on 14th St. for 5 blocks to end at St. Mary's St.
9. **LEFT** on St. Mary's for 1 block to Blasingame Rd.
10. **RIGHT** on Blasingame to the parking lot entrance on your right.
11. **NEAR the Pavilion** to your left, **ENTER the park path and turn RIGHT**.
12. Just past the "1 mi. mark FINISH", stay to the **RIGHT** on the main path passing the trash can and bench.
13. **CONTINUE** around the path, passing ball fields, a parking lot, a T-Ball field, and return to the entrance where you came in.
14. **LEFT** on Blasingame (becomes 15th St.) and continue for 14 blocks (about 1 ½ km) to Kosse Street.
15. **LEFT** on Kosse St. for 2 blocks to 13th Street.
16. **CROSS 13th St., using the crosswalk**, and turn **LEFT** on 13th for 2 blocks to St. Barbe Street.
17. **RIGHT** on St. Barbe for 1 block to 12th Street.
18. **LEFT** on 12th St for 5 blocks to Austin St. / Business US-290 (**NOTE:** Official Little Free Library on east side of street, between Main and Bremond).
19. **RIGHT** on Austin St. for 1 block to FM-1887.
20. **CROSS and RIGHT** on FM-1887 for 1+ block to Main St.
21. **LEFT** on Main St. for a very short block to 11th St.
22. **LEFT** on 11th for 1 block to Bremond St.
23. **RIGHT** on Bremond for 1 block to 10th Street.
24. **RIGHT** on 10th St. for 2 blocks to Washington St.
25. **LEFT** on Washington for 1 block to 9th Street.
26. **RIGHT** on 9th St. for 2 blocks to St. Barbe St.
27. **RIGHT** on St. Barbe for 1 block to 10th Street.
28. **LEFT** on 10th St. for 11 blocks (about 1 km) to San Antonio Street.
29. **LEFT** on San Antonio for 1 block to 9th Street.
30. **LEFT** on 9th St. for 12 blocks to Lafayette Street.
31. **RIGHT** on Lafayette for 1 block to 8th Street.
32. **LEFT** on 8th St. for 4 blocks to Austin St. / Bus. US-290.
33. **LEFT** on Austin St. for 2 blocks to the signal light at 10th Street.
34. **RIGHT** on 10th for 2 blocks to Wilkins Street.
35. **RIGHT** on Wilkins to **FINISH**.

These walk directions and maps may only be used in conjunction with a signed American Volkssport Association athletic waiver. All other uses are prohibited.

WALLER COUNTY 10 KM WALK IN HEMPSTEAD, TX.



TEXAS COUNTY WALKERS – 2021 WALLER COUNTY 6 km WALK in HEMPSTEAD, TX.

The walk starts at the Waller County Courthouse at 836 Austin St, Hempstead, TX 77445. East- or westbound on US-290, take TX Hwy 6 / 10th Street south to Wilkins St. Turn left on Wilkins and park in the lot on your right, on the west side of the Courthouse.

6 KM INSTRUCTIONS

1. Facing the side of the Courthouse read the Historical Marker just to the left.
2. **LEFT** 1/3 block to Wilkins St.
3. **RIGHT** on Wilkins to the historic monument behind the courthouse.
4. **CONTINUE** around to the front of the Courthouse, turning **RIGHT** on Austin St. to the Clock Tower.
5. **CONTINUE** west on Austin St. for 4 blocks to 13th St.
6. **RIGHT** on 13th St. for 1 block to Wilkins St.
7. **LEFT** on Wilkins for 1 block to 14th Street.
8. **RIGHT** on 14th St. for 5 blocks to end at St. Mary's St.
9. **LEFT** on St. Mary's for 1 block to Blasingame Rd.
10. **RIGHT** on Blasingame to the parking lot entrance on your right.
11. **NEAR the Pavilion** to your left, **ENTER the park path and turn RIGHT.**
12. Just past the "1 mi. mark FINISH", stay to the **RIGHT** on the main path passing the trash can and bench.
13. **CONTINUE** around the path, passing ball fields, a parking lot, a T-Ball field, and return to the entrance where you came in.
14. **LEFT** on Blasingame (becomes 15th St.) and continue for 14 blocks (about 1 ½ km) to Kosse Street.
15. **LEFT** on Kosse St. for 2 blocks to 13th Street.
16. **CROSS 13th St., using the crosswalk,** and turn **LEFT** on 13th for 2 blocks to St. Barbe Street.
17. **RIGHT** on St. Barbe for 1 block to 12th Street.
18. **LEFT** on 12th St for 5 blocks to Austin St. / Business US-290 (**NOTE:** Official Little Free Library on east side of street, between Main and Bremond).
19. **RIGHT** on Austin St. for 3 blocks to 10th Street.
20. **LEFT** on 10th for 1 block to Wilkins Street.
21. **RIGHT** on Wilkins to **FINISH.**

These walk directions and maps may only be used in conjunction with a signed American Volkssport Association athletic waiver. All other uses are prohibited.

WALLER COUNTY 6 km Walk in HEMPSTEAD, TX.

