



**Chadron-Agate Fossil Bed National Monument**  
**TRAIL RATED 1A - 5K AND 10K ROUTES**  
 © Nebraska Wander Freunde Trailblazers 4/1/22  
**SPECIAL PROGRAMS: None**



You will see great views of the sweeping plains and the Niobrara Valley along high plains mixed grass prairie as well as fossil dig sites. The 5 K route is on pavement and boardwalk and is easily accessible for wheelchairs and strollers. The 10 K also traverses dirt and gravel roads taking you to the Bone Cabin.

*This walk is also available through a physical walk box—please do not register at that location or use any materials from that walk box.*

**Walk Registration:**

Registration takes place online using the AVA Online Start Box, on my.ava.org. Follow the instructions provided to create a user account and sign the AVA waiver (one time). Instructions for payment are also included. Download the directions and print as needed. The POC does not provide event directions or accept alternate payment methods.

**Walk Completion and Walk Credit:**

Once you have physically completed the walk, please login to your Online Start Box account click on the “My Start Box” tab, then the “Finish Table” tab, then click on “Go to Finish Table” button for the event you have completed. Use the displayed entry form to submit the date and distance of your walk as well as select applicable AVA Special Programs to generate stamped “virtual” insert cards that you may choose to print out.

**Table of Contents:**

Use the following table to guide what portion of this document you may wish to print out.

<b>Section Contents</b>	<b>Pages</b>
Introduction, Walk Registration/Completion, and Table of Contents	1
Driving Directions, Notes	2
5K Directions and Map	3
10K Directions and Map	4-5

**Starting Point Location:**

42.42531, -1037334

Agate Fossil Bed National Monument  
Harrison, NE

If traveling east or west on U.S. Highway 26, turn north on State Highway 29 in Mitchell, Nebraska. Thirty-four (34) miles north of Mitchell, turn east on River Road (it's paved) and follow the National Park Service signs for three miles to reach the monument's visitor center and museum.

If traveling east or west on U.S. Highway 20, turn south on State Highway 29 in Harrison, Nebraska. Twenty-two (22) miles south of Harrison, turn east on River Road (it's paved) and follow the National Park Service signs for three miles to reach the monument's visitor center and museum.

**Facilities:**

Restrooms and water are available at the Visitor's Center when open.

It is advised to carry water. There is little shade in this desert environment.

**Emergency Numbers:**



In case of Emergency: Dial 911  
Event related assistance:  
Kerri Remp, 308-432-3006

## Visitor Center and Museum

- Summer Hours  
Daily from May 14 until Sept 30: 9:00 a.m. to 5:00 p.m. (Mountain time zone)
- Winter Hours  
Daily from Oct 1 until May 13: 8:00 a.m. to 4:00 p.m. (Mountain time zone)
- Visitor Center Holiday Closures  
Thanksgiving Day, Christmas Day, and New Year's Day

## Trails Are Open Year Around Dawn to Dusk

### About the monument

This semi-remote park offers the opportunity to explore two trails that lead to fossil dig sites. The park is surrounded by prairie grasslands offering the opportunity to view Pronghorn Antelope and other wildlife. The visitor center has a diorama showcasing mounted skeletons that represent the Miocene Epoch mammals that were found in this area.

**The Fossil beds trail** is paved and fairly level. It takes you up to and around the two primary excavation sites for the fossils you saw in the visitor center.

### The Bone Cabin (on 10 K route)

About midway between the visitor center and Fossil Hills is an unpaved one-mile side trail that leads west to Harold J. Cook's homestead cabin. Restored to what it looked like in 1910, while Harold and his wife Eleanor still lived there, the "Bone" cabin was used after 1914 as the temporary residence for scientists who worked the fossil quarries. The American Museum of Natural History's lead excavator, Albert "Bill" Thomson, lived there whenever conducting field work in the bonebed in the late 1910s and early 1920s.

To visit more fossils, you can take a short drive further west on the River Road to the **Daemonelix Trail**. (Watch for the parking area on the north side of the road) Not part of the Volkswalk, this trail is shorter, made of crushed gravel, and takes you past several in situ Daemonelix fossils. This one mile trail features exhibits of the spiral corkscrew fossil of the Paleocastor, an ancient land beaver that lived here in the Miocene.

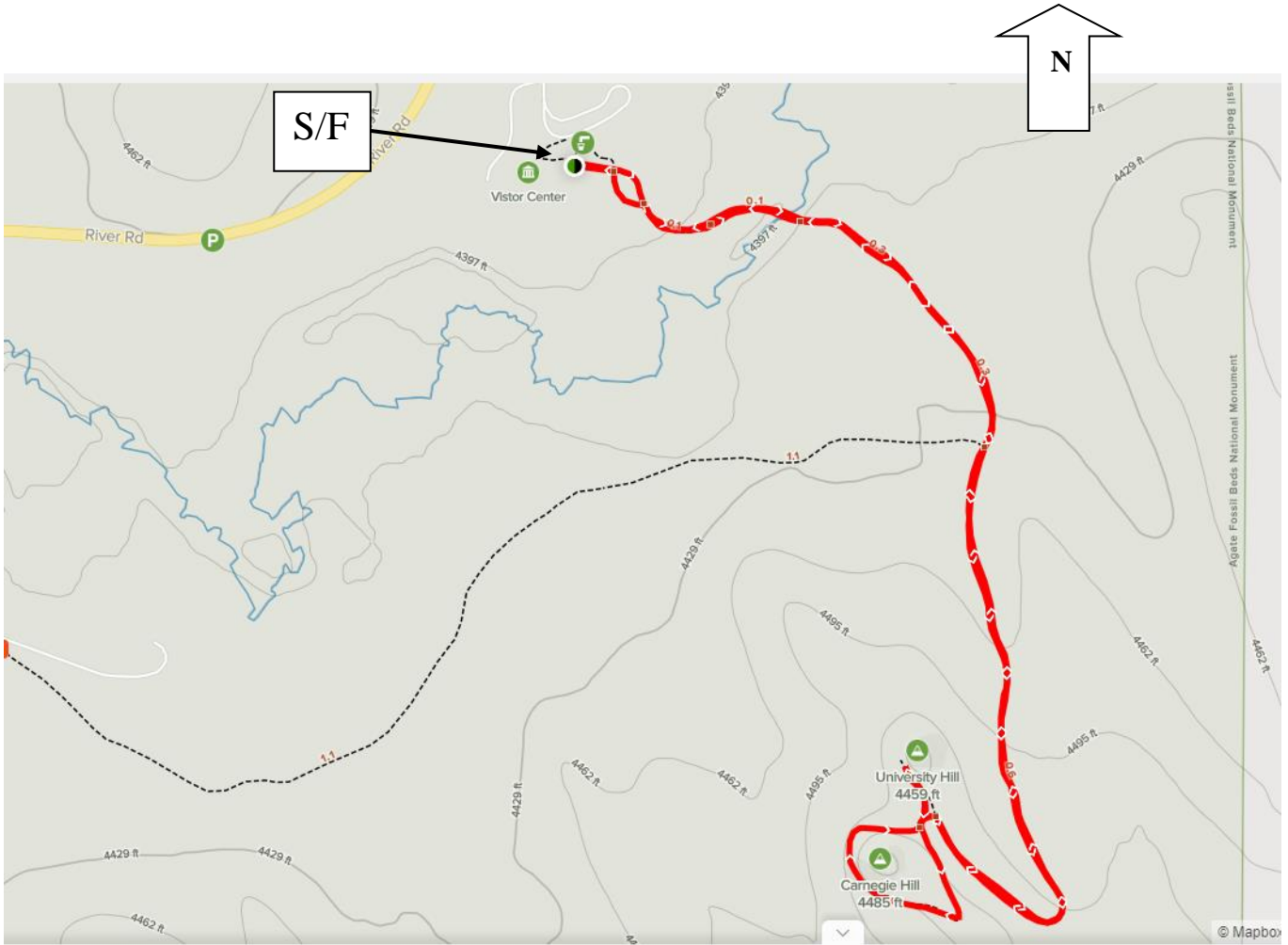
**AGATE FOSSIL BED NATIONAL MONUMENT – 5K**

**START POINT – VISITOR CENTER**

42.42531, -1037334

# 5k Directions & Map

From the Visitor Center, follow the Agate Fossil Bed Trail signs to trail. Follow the trail to the end, follow the loop and return to the Visitor Center.



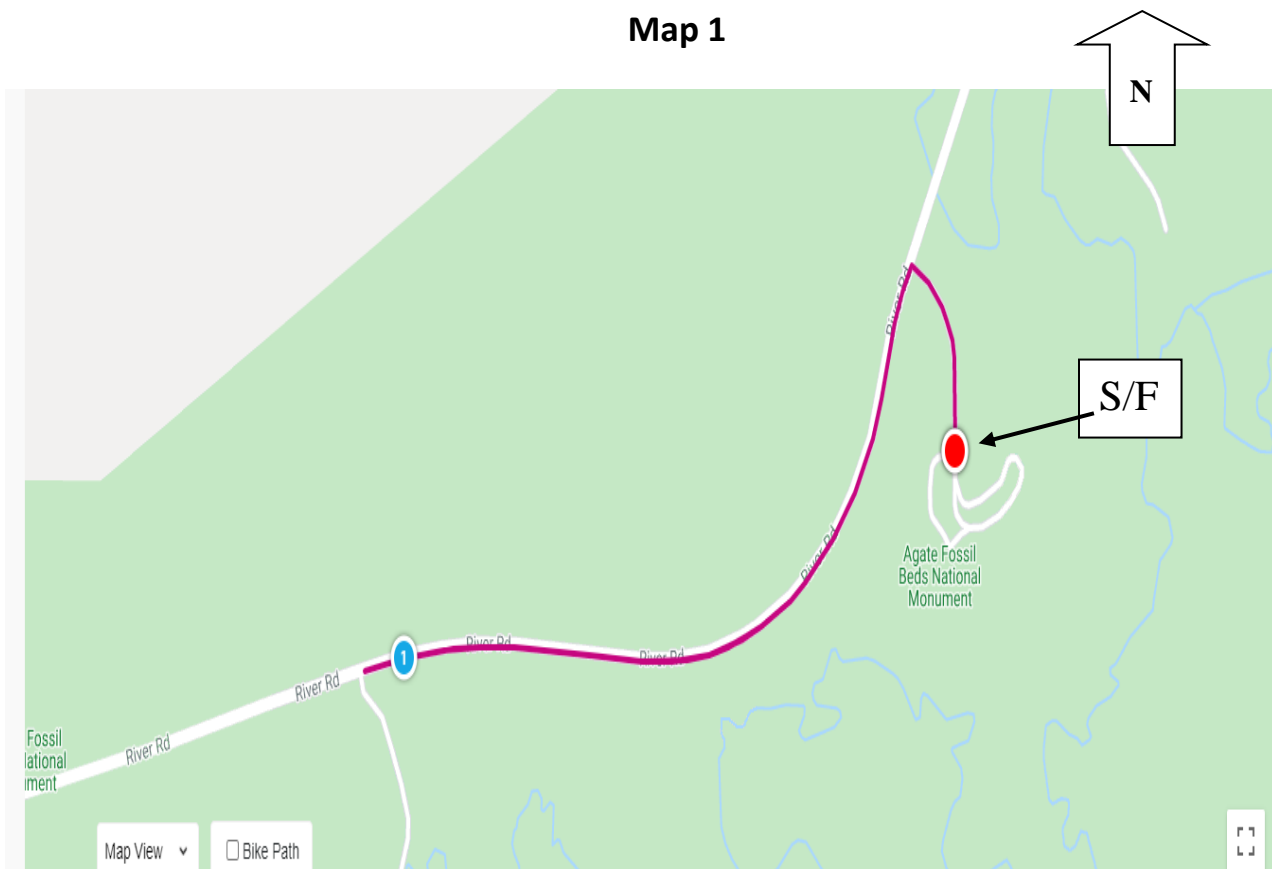
	<b>Emergency: Call 911</b>
	<b>NWFT Club: Steve Burkland 402-659-1954</b>
	<b>Regional Director: Susan Pinneke 515-423-8427</b>


**AGATE FOSSIL BED NATIONAL MONUMENT – 10K**  
**START POINT – VISITOR CENTER**  
42.42531, -1037334

# 10K Directions

1. From the Visitor Center, return to River Road and turn left (west) to first road on your left (not marked) (Map 1) Walk facing traffic.
2. At the first road, turn around and return to the Visitor Center.
3. From the Visitor Center follow signs to Agate Fossil Bed Trail. (In Red or dashed line on Map 2)
4. Watch for signs to The Bone Cabin. Turn right (west) onto trail to the Bone Cabin. (In Green or solid line on Map 2)
5. At the Bone Cabin, turn around and retrace your steps to the Agate Fossil Bed Trail.
6. Turn right (south) on the Agate Fossil Bed Trail (In Red or dashed line on Map 2)
7. Follow the Agate Fossil Bed Trail to the end, follow the loop and return to the Visitor Center

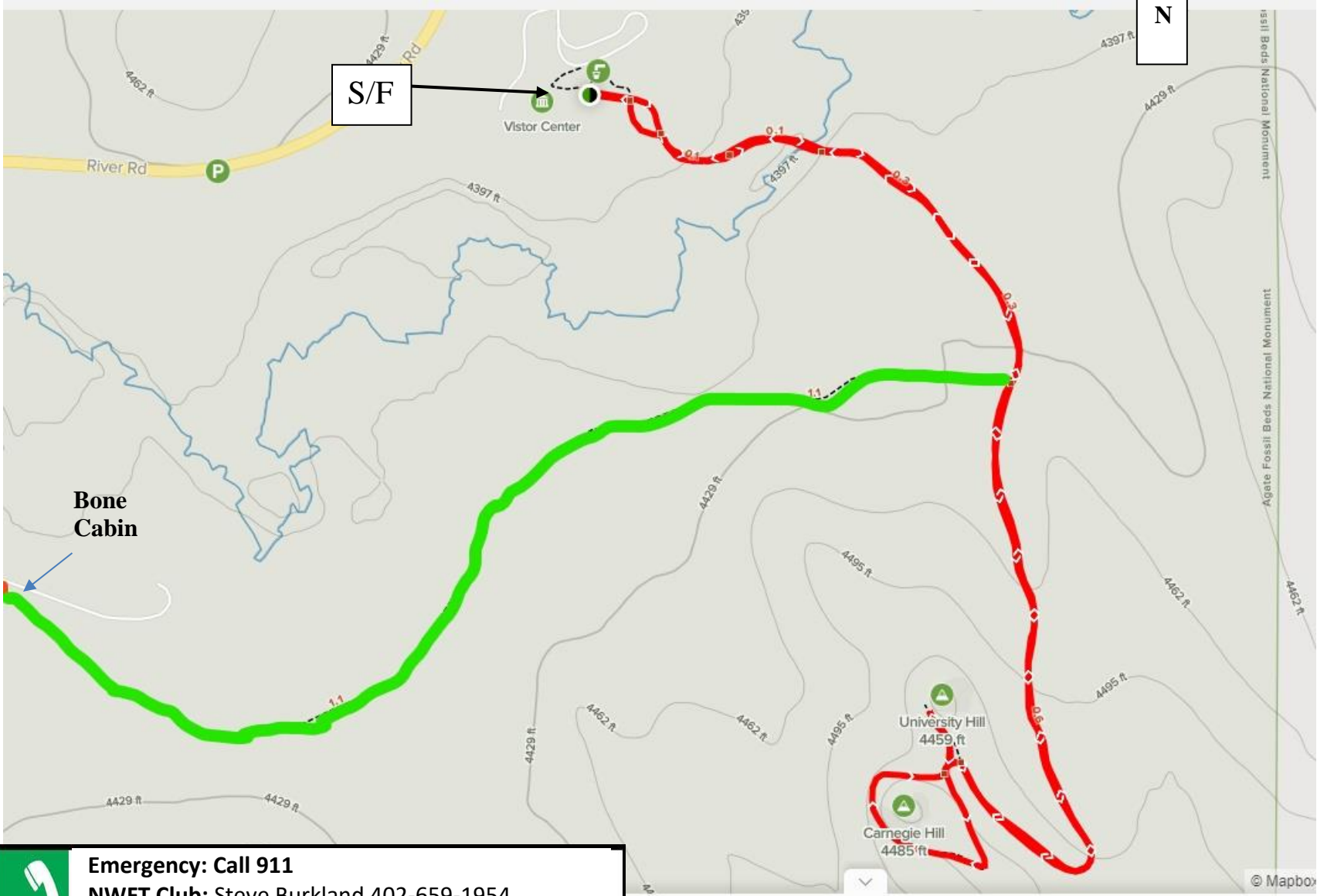
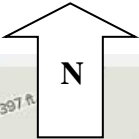
**Map 1**




	<b>Emergency: Call 911</b>
	<b>NWFT Club: Steve Burkland 402-659-1954</b>
	<b>Regional Director: Susan Pinneke 515-423-8427</b>

Agate Fossil Bed National Monument

Map 2



 **Emergency: Call 911**  
**NWFT Club: Steve Burkland 402-659-1954**  
**Regional Director: Susan Pinneke 515-423-8427**

*These walk directions and maps may only be used in conjunction with a signed American Volkssport Association Athletic Waiver. All other uses are prohibited.*