

The Olympic Peninsula Explorers Volkssport Club Welcomes You to the Silverdale – Newberry Hill Heritage Park Walk

The walk is 5k and 10K (2C) and have some moderate hills or stair climbing with some difficult terrain. Strollers: No, Wheelchairs: No, Pets: Yes, Restroom: No, (Restrooms available at nearby R&H Market: 8802 NW Newberry Hill Road, Silverdale, WA), Pass Required: No.

[Newberry Hill Heritage Park](#)

Walk along woodland trails past wetlands and through forests and meadows. Bicycles & horses allowed on trail; yield to horses on trail.

Follow WA-3 to Newberry Hill Rd exit. At 2nd traffic light on Newberry Hill turn Left. Klahowya Secondary School on this road. Before you come to a yellow metal gate and metal fence on the school road, park on right or left side of the road.

Coord: 47.634245,-122.754979

Walk Registration:

Registration takes place online using the AVA Online Start Box, on

<http://my.ava.org>. Follow the instructions provided to create a user account and sign the AVA waiver (one time). Instructions for payment are also included. Download the directions and print as needed. The POC does not provide event directions or accept alternate payment methods.

Walk Completion and Walk Credit:

Once you have physically completed the Walk, please login to your Online Start Box account click on the “My Start Box” tab, then the “Finish Table” tab, then click on “Go to Finish Table” button for the event you have completed. Use the displayed entry form to submit the date and distance of your Walk as well as select applicable AVA Special Programs to generate stamped “virtual” insert cards that you may choose to print out.

Table of Contents:

Use the following table to guide what portion of this document you may wish to print out.

Section Contents	Pages
Introduction, Walk Registration/Completion, and Table of Contents	1
Walk Directions	2 - 6
Maps	7 - 8

WELCOME TO OUR YEAR-ROUND VOLKSSPORT EVENT
NEWBERRY HILL HERITAGE PARK TRAIL
OLYMPIC PENINSULA EXPLORERS VOLKSSPORT CLUB
5km Rated 2C **YRE 2980**

ESVA Challenges: 39 Counties – Kitsap

AVA Challenges: Walking the US A-Z, 50 States/51 Capitals, Anniversaries Hurrah

From parking area walk to the sidewalk on left side of the school road to a yellow post in the middle of the sidewalk.

1. At yellow post begin your walk. Continue walking on sidewalk and later on grass on left side of school road passing by the Klahowya Secondary School concrete sign on your left and many Eagles Champion signs located on right side of the school road.
2. Shortly after you pass by the last Eagles Champion signs the road will curve left. Immediately after school road curves left, **cross** street and then turn **RIGHT** to enter a trail at the Children's Forest wood sign. NOTE: The Children's Forest trail may be closed for maintenance. If so, continue walking along the right hand edge of the asphalt in this parking area until reaching (shortly) the "KSS" trail near the other end of the paved area. Turn **RIGHT** onto this trail and proceed with Step #5.
3. Straight ahead is a Kiosk (Wooden Trailhead Bulletin Board). At Kiosk turn **RIGHT**. You will pass by a Wolf on your right, a Ground Sloth on your left, a Smilodon (Saber-Toothed Tiger) on your right and a Woolly Mammoth on your left. **(1K)** Continue on loop until you come to an Amphitheater on right side of trail.
4. Turn **RIGHT** into the Amphitheater and walk to the back of the Amphitheater to a small trail. Take trail straight ahead to a "Y" (KSS and Children's Forest sign).
5. Turn **RIGHT** at "Y" onto KSS trail. Continue on KSS trail to a "T" (Old Loop and KSS sign).
6. Turn **LEFT** at "T" onto Old Loop road. **(2K)** Continue on Old Loop road to a (Bird Meadow and Old Loop sign) located on right side of trail.
7. Turn **RIGHT** at Bird Meadow and Old Loop sign onto Bird Meadow trail. Continue on Bird Meadow to a "T" (Wildlife and Bird Meadow sign).
8. Turn **LEFT** at "T" onto Wildlife trail. Continue on Wildlife trail to a "T" (Wildlife and Old Loop sign) and a metal post (has held a mailbox in the past).
9. Turn **LEFT** at "T" onto Old Loop road. **(3K)** Continue on Old Loop road to an (Old Loop and Deer Fern sign).
10. Turn **RIGHT** onto Deer Fern dirt road. Continue on Deer Fern dirt road for awhile to first narrow trail on your right.
11. Turn **RIGHT** onto narrow trail (no sign). **(4K)** Continue on narrow trail to a wide dirt road.
12. Turn **RIGHT** onto wide dirt road (no sign). Continue on wide dirt road for a very short distance to a narrow trail on your right.
13. Turn **RIGHT** on narrow trail (no

In case of emergency: Dial 9-1-1 - Event related assistance: Kim Paulson 206-780-1344

WELCOME TO OUR YEAR-ROUND VOLKSSPORT EVENT
NEWBERRY HILL HERITAGE PARK TRAIL
OLYMPIC PENINSULA EXPLORERS VOLKSSPORT CLUB
5km Rated 2C **YRE 2980**

ESVA Challenges: 39 Counties – Kitsap

AVA Challenges: Walking the US A-Z, 50 States/51 Capitals, Anniversaries Hurrah

- sign). Continue on narrow trail to a wide dirt road.
14. Turn **RIGHT** onto wide dirt road (no sign). Continue on wide dirt road to a wooden fence on your right.
15. Pass by wooden fence located on your right and enter narrow trail (no sign) straight ahead. Continue on narrow trail to a “T” (CKSP Property Beyond This Point sign) located on your left.
16. Turn **RIGHT** at “T”. Continue on trail and walk between two metal fences to the school road.
17. Turn **RIGHT** on sidewalk and walk to same yellow post you began this walk. This completes this walk.

Be sure to log back into the OSB system (my.ava.org) to “finish/complete” your online registration after doing the walk. The OSB system does not deduct any walking fee from a walker’s Event Bank until they have submitted walk completion info including the date the event was walked, the distance walked, and the selection of applicable special programs that walker is participating in. (Nevertheless, a fee of \$2 for a downloaded pdf is deducted from the user’s Event Bank when the pdf is downloaded. Later, any pdf fees are credited back to a walker’s Event Bank when he/she submits the walk completion info as a paying for credit walker.) Note however that the \$2 “coupon” for the downloaded PDF expires in 60 days.

In case of emergency: Dial 9-1-1 - Event related assistance: Kim Paulson 206-780-1344

WELCOME TO OUR YEAR-ROUND VOLKSSPORT EVENT
NEWBERRY HILL HERITAGE PARK TRAIL
OLYMPIC PENINSULA EXPLORERS VOLKSSPORT CLUB
10km Rated 2C **YRE 2980**

ESVA Challenges: 39 Counties – Kitsap

AVA Challenges: Walking the US A-Z, 50 States/51 Capitals, Anniversaries Hurrah

From parking area walk to the Kiosk (Wooden Trailhead Bulletin Board) located on right side of the school road.

1. At Kiosk enter Big Cedar trail (unmarked) to begin walk. Continue on Big Cedar to a 4-way intersection (Big Cedar and Flying Eagle sign). to the school road. Continue **RIGHT** walking on right side of road for a short distance to a trail at the Children's Forest wood sign located on your right.
2. Continue **STRAIGHT** at 4-way intersection crossing over Flying Eagle. Continue on Big Cedar to first trail located on your left (Big Cedar and Alder Pass sign).
3. Turn **LEFT** at this trail onto Alder Pass. Continue on Alder Pass to a "Y" (Beaver Loop and Alder Pass sign).
4. Turn **LEFT** at "Y" onto Beaver Loop.
5. Keep **LEFT** at next two unmarked Y's. **(1K)** Continue to 4-way intersection (Deer Loop and Bobcat sign).
6. Turn **RIGHT** at 4-way intersection onto Bobcat Run trail. Continue on Bobcat to a "Y" (Bobcat Run and Flying Eagle sign).
7. Turn **RIGHT** at "Y" onto Bobcat Run. **(2K)** Continue on Bobcat Run to a 3-way intersection (Fire Road sign).
8. Continue **STRAIGHT** at 3-way intersection passing by Fire Road sign located on right side of trail. Continue on trail to a wide dirt road.
9. Turn **LEFT** at wide dirt road and walk towards a metal fence and gate.
10. Walk around fence on right hand side 11. Turn **RIGHT** at the Children's Forest sign and walk to a Kiosk (Wooden Trailhead Bulletin Board), which is straight ahead. **(3K)** NOTE: The Children's Forest trail may be closed for maintenance. If so, continue walking along the right-hand edge of the asphalt in this parking area until reaching (shortly) the "KSS" trail near the other end of the paved area. Turn **RIGHT** onto this trail and proceed with Step #14.
12. At Kiosk turn **RIGHT**. You will pass by a Wolf on your right, a Ground Sloth on your left, a Smilodon (Saber-Toothed Tiger) on your right and a Woolly Mammoth on your left. Continue on trail until you come to an Covered Amphitheater on right side of trail.
13. Turn **RIGHT** into the Amphitheater and walk to the back of the Amphitheater to a small trail. Take trail straight ahead to a "Y" (KSS and Children's Forest sign [currently no sign or post, but obvious "Y"]).
14. Turn **RIGHT** at "Y" onto KSS trail. Continue on KSS trail to a "T" (Old Loop and KSS sign).
15. Turn **LEFT** at "T" onto Old Loop road. **(4K)** Continue on Old Loop road to a (Bird Meadow and Old Loop sign)

In case of emergency: Dial 9-1-1 - Event related assistance: Kim Paulson 206-780-1344

WELCOME TO OUR YEAR-ROUND VOLKSSPORT EVENT
NEWBERRY HILL HERITAGE PARK TRAIL
OLYMPIC PENINSULA EXPLORERS VOLKSSPORT CLUB
10km Rated 2C **YRE 2980**

ESVA Challenges: 39 Counties – Kitsap

AVA Challenges: Walking the US A-Z, 50 States/51 Capitals, Anniversaries Hurrah

located on right side of trail.

16. Turn **RIGHT** at Bird Meadow and Old Loop sign onto Bird Meadow trail. Continue on Bird Meadow to a “T” (Wildlife and Bird Meadow sign).
17. Turn **LEFT** at “T” onto Wildlife trail. **(5K)** Continue on Wildlife trail to a “T” (Wildlife and Old Loop sign) and a post (has held a mailbox in the past).
18. Turn **RIGHT** at “T” onto Old Loop road. Continue for awhile to (Ricochet/No Horses sign) on left side of trail and (Wildlife and Old Loop sign) on right side of trail.
19. Turn **RIGHT** at these signs onto Wildlife trail. Continue on Wildlife trail to an “Overlook Foot Traffic Only” sign on left side of trail. Don’t turn but continue straight on Wildlife trail to a “Foot Traffic Only” sign located on left side of trail.
20. Turn **LEFT** at Foot Traffic Only sign and walk out to observation deck overlooking the wetlands. **(7K)** Enjoy the beautiful view of the wetlands.
21. Walk back to trail you were on and turn **LEFT** and continue in the same direction as before. Continue on Wildlife trail to (Wildlife and Bird Meadow sign) on left side of trail.
22. Veer **RIGHT** at sign to continue on Wildlife trail. Continue on Wildlife trail to a “T” (Wildlife and Old Loop sign)

and the post you previously passed.

23. Turn **LEFT** at “T” onto Old Loop road. **(8K)** Continue on Old Loop road to an (Old Loop and Deer Fern sign).
24. Turn **RIGHT** onto Deer Fern dirt road. Continue on Deer Fern dirt road for awhile to first narrow trail on your right.
25. Turn **RIGHT** onto narrow trail (no sign, but halfway up a slope). Continue on narrow trail to a wide dirt road.
26. Turn **RIGHT** onto wide dirt road (no sign). **(9K)** Continue on wide dirt road for a very short distance to a narrow trail on your right.
27. Turn **RIGHT** onto narrow trail (no sign). Pass Deer Fern Sign. Continue on narrow trail to a wide dirt road.
28. Turn **RIGHT** onto wide dirt road (no sign). Continue on wide dirt road to a wooden fence on your right.
29. Pass by wooden fence located on your right and enter narrow trail (no sign – do not go around fence) straight ahead. Continue on narrow trail to a “T” (CKSP Property Beyond This Point sign) located on your left.
30. Turn **RIGHT** at “T” (use trail before drainage path). Continue on trail and walk between two metal fences to the school road.
31. Turn **RIGHT** on sidewalk and walk to a yellow post in middle of the sidewalk to complete this walk.

In case of emergency: Dial 9-1-1 - Event related assistance: Kim Paulson 206-780-1344

WELCOME TO OUR YEAR-ROUND VOLKSSPORT EVENT
NEWBERRY HILL HERITAGE PARK TRAIL
OLYMPIC PENINSULA EXPLORERS VOLKSSPORT CLUB
10km Rated 2C **YRE 2980**

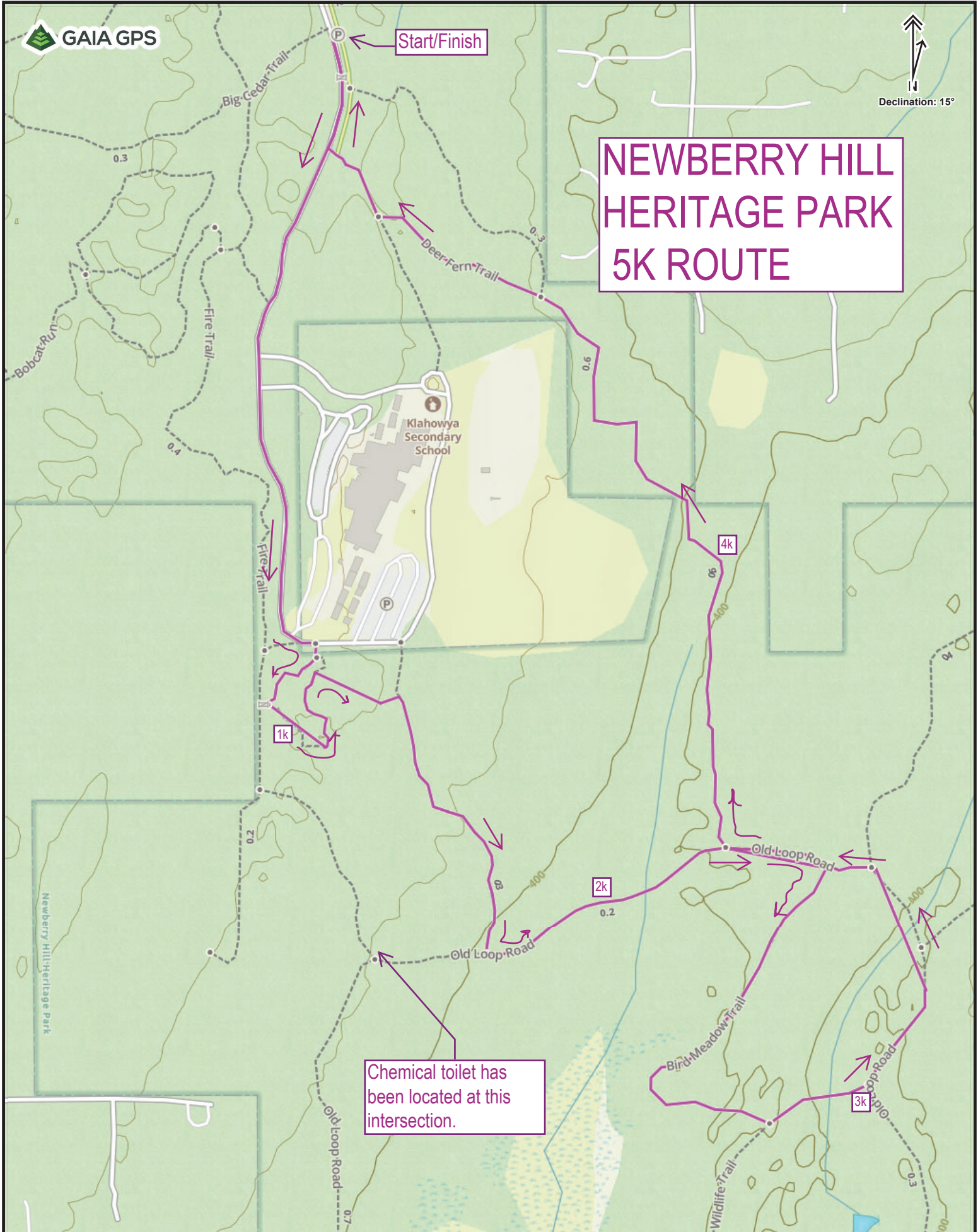
ESVA Challenges: 39 Counties – Kitsap

AVA Challenges: Walking the US A-Z, 50 States/51 Capitals, Anniversaries Hurrah

Be sure to log back into the OSB system (my.ava.org) to “finish/complete” your online registration after doing the walk. The OSB system does not deduct any walking fee from a walker’s Event Bank until they have submitted walk completion info including the date the event was walked, the distance walked, and the selection of applicable special programs that walker is participating in. (Nevertheless, a fee of \$2 for a downloaded pdf is deducted from the user’s Event Bank when the pdf is downloaded. Later, any pdf fees are credited back to a walker’s Event Bank when he/she submits the walk completion info as a paying for credit walker.) Note however that the \$2 “coupon” for the downloaded PDF expires in 60 days.

In case of emergency: Dial 9-1-1 - Event related assistance: Kim Paulson 206-780-1344

NEWBERRY HILL HERITAGE PARK 5K ROUTE



Chemical toilet has been located at this intersection.

NEWBERRY HILL HERITAGE PARK 10K ROUTE

Declination: 15°

Start/Finish

Chemical toilet has been located here.

