

The Sun Country Striders
 Welcomes You to
**Lovington, New Mexico - Lea
 County**
 AVA Sanctioned Year Round Event



This walk is composed of 5 and 10km routes and will be available in 2022 only. Lovington is the county seat of Lea County. The walk passes the historic downtown area, churches, schools, city parks, and Lea County Museum.

Walk Registration:

Please use the Online Start Box (OSB) to register and complete the event or contact the POC for remote registration. The directions and stamps will be available at the La Quinta Hotel at 26147 US-70E in Ruidoso during the Sun Country Striders Week of Walking April 20-25, 2022. If wishing to do the walk on the way to the events, contact the POC.

Walk Completion and Walk Credit:

Once you have completed the walk, please login to your Online Start Box account click on the "My Start Box" tab, then the "Finish Table" tab, then click on "Go to Finish Table" button for the event you have completed. Use the displayed entry form to submit the date and distance of your walk as well as select applicable AVA Special Programs to generate stamped "virtual" insert cards that you may choose to print out.

Driving Directions to Start Point:

The walk starts behind the Lea County Courthouse at 100 Main St. From NM-18 (Main St), the major north/south highway thru town, drive to the courthouse located on the east side of the highway. Turn on either Washington or Central street and continue Love St and the back of the courthouse. Park in the available parking lots. Restrooms available at the courthouse and local businesses along the route.

Table of Contents:

Use the following table to guide what portion of this document you may wish to print out.

Section Contents	Pages
Introduction, Walk Registration/Completion, Driving Directions, and Table of Contents	1
Walk Directions - 5km	2-3
Walk Directions - 10km	4-5

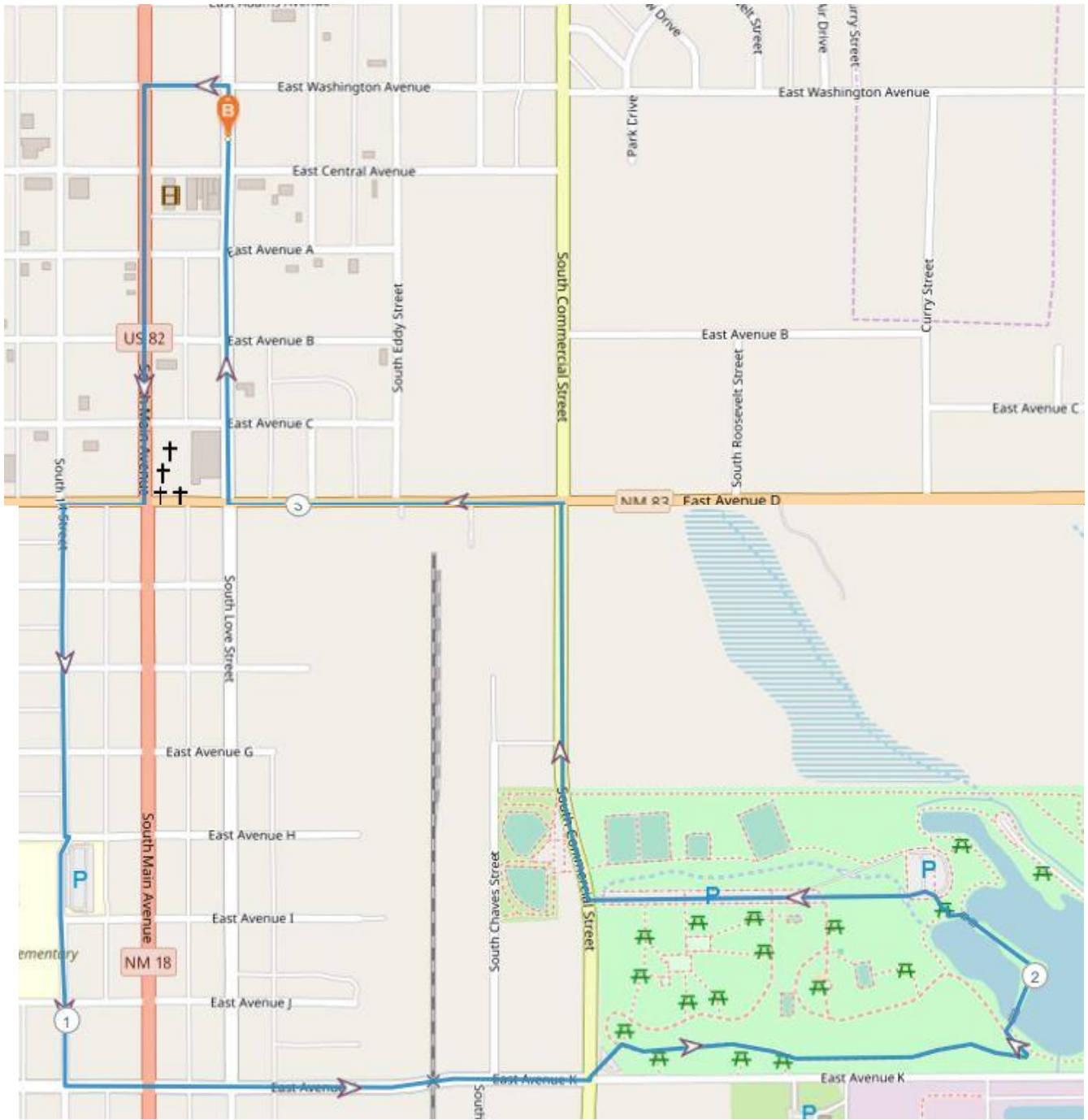
LOVINGTON - LEA COUNTY – 5k

Special Programs: Town Hall, Veterans

These walk directions and maps may only be used in conjunction with a signed American Volkssport Association athletic waiver. All other uses are prohibited.

1. Facing the back of the courthouse, **RIGHT** on Love St ½ block to Washington.
2. **LEFT** on Washington 1 block to Main St.
3. **LEFT** on Main 5 blocks to Ave D.
4. **RIGHT** on Ave D 1 block to 1st St.
5. **LEFT** on 1st St 7 blocks to Ave K passing the Llano Elementary School.
6. **LEFT** on Ave K 4-5 blocks to Commercial St to the corner parking lot for Chaparral Park.
7. **VEER LEFT** thru the small parking area to the walking.
8. **RIGHT** on trail and continue on the outer loop to the lake.
9. **LEFT** a short distance to the bridge, then **RIGHT** across the bridge to the parking lot (bridge angles left to the other side).
10. **LEFT** thru the parking lot and continue to Commercial St.
11. **RIGHT** on Commercial 1 long block to Ave D (NM-83).
12. **LEFT** on Ave D 3 blocks to Love St.
13. **RIGHT** on Love St 5 blocks passing the Lovington City Hall, the fire department, and the Lea County Museum.
14. Return to your car. **End of 5k route.**

**Event related assistance:
Helen Hull: 972-530-1026**



Lovington - 5k

LOVINGTON - LEA COUNTY – 10k

Special Programs: Town Hall, Veterans

These walk directions and maps may only be used in conjunction with a signed American Volkssport Association athletic waiver. All other uses are prohibited.

1. Facing the back of the courthouse, **LEFT** on Love St 4 ½ blocks to Ave D passing the Lea County Museum, City Hall, and the fire department.
2. **RIGHT** on Ave D 1 block to Main St..
3. **RIGHT** on Main St 4 blocks to Central.
4. **LEFT** on Central 4 blocks to 3rd St. Note the veteran memorial at the corner of the courthouse.
5. **LEFT** on 3rd St 3 blocks to Ave C.
6. **RIGHT** on Ave C 4 blocks to the park on the left. Continue to the end of the park.
7. **LEFT** thru the park to Ave D.
8. **LEFT** on Ave D 5 blocks to 1st St.
9. **RIGHT** on 1st St 7 blocks to Ave K passing the Llano Elementary School.
10. **LEFT** on Ave K 4-5 blocks to Commercial St to the corner parking lot for Chaparral Park.
11. **VEER LEFT** thru the small parking area to the walking.
12. **RIGHT** on trail and continue on the outer loop to the lake.
13. **LEFT** a short distance to the bridge, then **RIGHT** across the bridge to the parking lot (bridge angles left to the other side).
14. **LEFT** thru the parking lot and continue to Commercial St.
15. **RIGHT** on Commercial 1 long block to Ave D (NM-83).
16. Carefully cross Ave D and continue to the Lea County Fairgrounds on the right.
17. **VEER RIGHT** thru the parking lot to the front of the main building. Note the tree sculptures flanking the entrance
18. **CONTINUE** thru the parking lot to Washington St.
19. **RIGHT** on Washington several blocks to Roosevelt St on the left. Note the Roping area at the back of the fairgrounds.
20. **LEFT** on Roosevelt to Jefferson St as it curves to the left and passes another small park.
21. **LEFT** on Jefferson 1 block to Commercial St.
22. **RIGHT** on Commercial St 1 block to Madison.
23. **LEFT** on Madison 4-5 blocks to Main St.
24. **LEFT** on Main 4 blocks to Central St noting the murals at Jefferson and Adams streets.
25. **LEFT** on Central 1 block to Love.
26. **LEFT** on Love returning to your car. **END of 10k route.**

**Event related assistance:
Helen Hull: 972-530-1026**

