



North St Paul Historic Walking Tour

Copyright 2026 Twin Cities Volkssports



Table of Contents/Event Details	1
North St Paul East 9 km Directions	2-3
North St Paul East 6 km Directions	4-6
North St Paul West 5 km Directions	7-8
North St Paul Historical Society Brochure	9-10

Dates:	1/1/2026 - 12/31/2026
City / State:	North St Paul MN
Event Name:	North St Paul Historic Walking Tour
Event Type:	Year Round Walk
Distance - Trail Ratings:	5, 6, 9, & 11 km
Description:	Walk downtown and residential North St Paul parks, paved trails, and sidewalks including the shorelines of Silver and Mud Lakes. The west 5km route passes by the world's largest snowman.
Amenities:	Strollers: Easy Wheelchairs: Easy Pets: Yes Restrooms: Yes
Special Programs:	Rails-to-Trails, Walking with America's Veterans
Start Times:	Dawn to dusk
Location:	Hause Park
Start Point / Driving Directions:	2616 4th Ave E, North St Paul MN 55109. North St Paul lies southwest of the I-694/Hwy 36 interchange. From either freeway, drive south on Geneva Ave/Century Ave/Hwy 120 to 4 th Ave. Turn right (west) for two blocks to start point.
Awards & Fees:	IVV Credit Only
Comments:	Street parking available. Restrooms available at start point and at parks along the trail.
Host Club:	Twin Cities Volkssports
Contact:	Ken Johnson johnsonck@centurylink.net 651-774-9607
Website:	https://www.facebook.com/groups/2039870106313616



WALK COMPLETION AND CREDIT: Be sure to log back into the OSB system to finish/complete your online registration after doing the event. The OSB system does not deduct any event fee from a participant's Event Bank until they have submitted event completion info including the date the event was walked, the distance walked, and the selection of applicable special programs that person is participating in. Nevertheless, a fee of \$2 for a downloaded PDF is deducted from the Event Bank when the PDF is downloaded. Later, any PDF fees are credited back to a user's Event Bank when they submit the event completion info as a paying for credit participant. Note however that the \$2 coupon for the downloaded PDF expires in 60 days. Also note that an event registration expires after 30 days, but if your registrations lapses, you may re-register without cost.

North St Paul Historic Walking Tour East 9 km Route

Copyright 2026 Twin Cities Volkssports



North St Paul was a planned “workingman’s community with industries and housing in a resort atmosphere”. It was the brainchild of Captain Henry Castle, a Civil War veteran, editor of the *St Paul Dispatch* and the owner of a 1200-acre farm on the south and east shores of Silver Lake. He harvested his last crop in the fall of 1886 and had 11 industries, 100 cottages, and numerous stores built between May and December of 1887. His dream of a large city died in the depression of 1893, but the town survives.

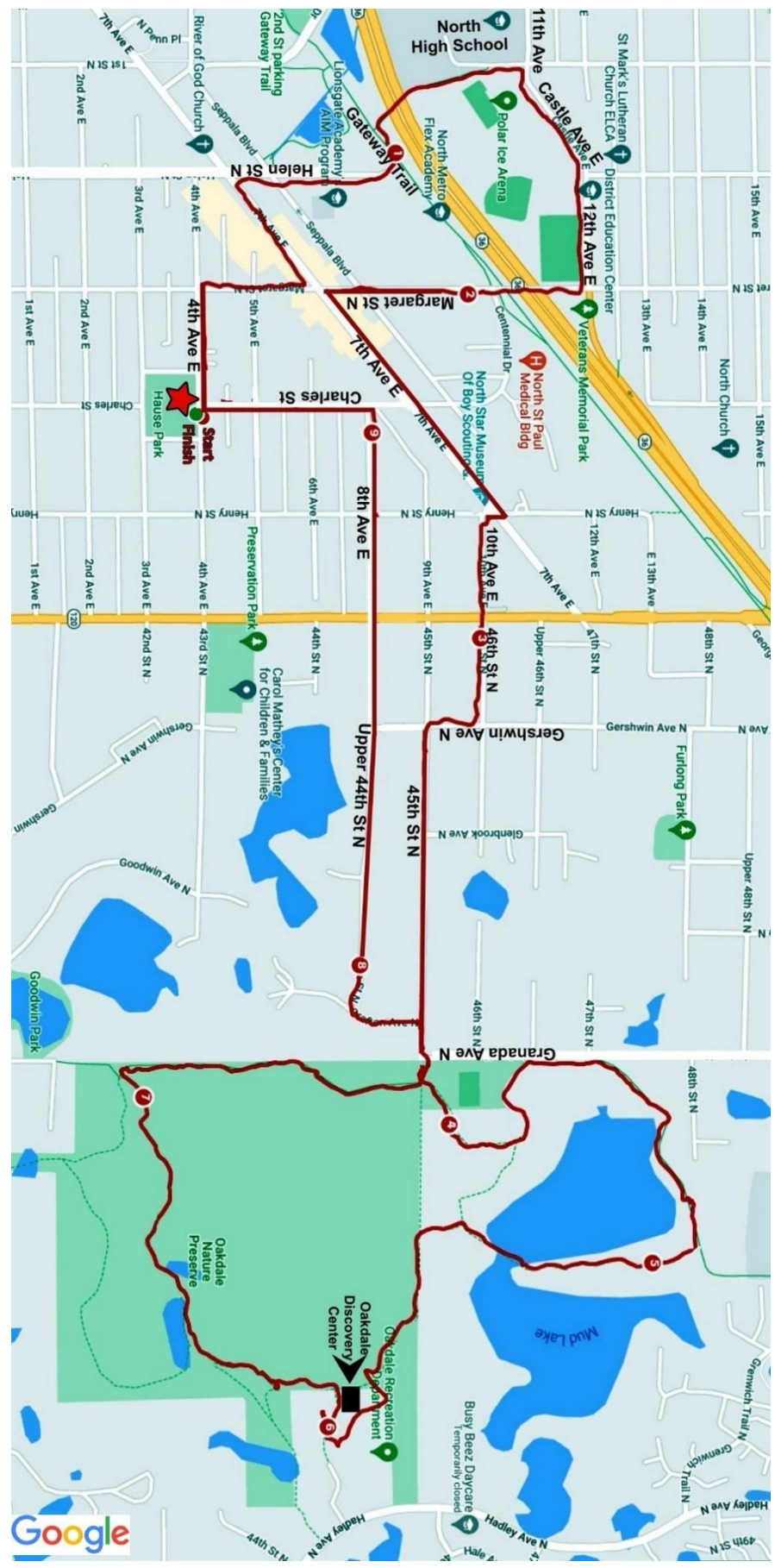
1. **Left** on 4th Ave E to Margaret St N
2. **Right** on Margaret St N
3. **Left** on 7th Ave E to pass sites #1-5
4. **Right** on Helen St N
5. **Continue** beyond the end of Helen St onto the Gateway State Trail
6. **Left** onto Gateway State Trail
7. **Right** to cross pedestrian bridge continuing straight with 1st St N and North High School on your left
8. **Right** at 11th Ave which curves right onto Castle Ave and becomes 12 Ave E
9. **Right** at Margaret St N passing Veteran’s Memorial Park and the North St Paul Snowman and site #12 on the other side of Hwy 36
10. **Left** on 7th Ave E
11. **Sharp Right** at Henry St N crossing 7th Ave E
12. **Cross** Century/Division/Geneva onto 46th St N and continue **Straight** on 10th Ave E
13. **Right** at Gershwin Ave N
14. **Left** at 45th St N
15. **Cross** Granada Ave N onto trail and go straight for 135 feet to kiosk.
16. **Left** at kiosk
17. **Pass** tennis courts on the left
18. **Left** at Karen Schmidt bench
19. **Right** at next intersection to pass along the peninsula between the two halves of Mud Lake
20. **Left** at next intersection
21. **Left** at next intersection
22. **Left** at the next intersection to reach the Oakdale Discovery Center on the right
23. **Left** at the crosswalk at the end of the parking lot
24. **Left** passing the schoolhouse on the right
25. **Right** past the front of the schoolhouse
26. **Right** at the next intersection
27. **Veer Left** at Y and continue **Straight**
28. **Right** at the first four-way intersection
29. **Left** at the four-way intersection with the kiosk
30. **Cross** Granada Ave N
31. **Left** at Grafton Ave N
32. **Right** at Upper 44th St N
33. **Cross** Century/Division/Geneva Ave onto 8th Ave E to pass sites #9
34. **Left** at Charles St returning to start point at 4th Ave E



In case of Emergency: Dial 911
Event related assistance:
Ken Johnson POC/RD 651-774-9607
Wayne Heath Club President 651-249-8886

North St Paul Historic Walking Tour East 9 km Route

Copyright 2026 Twin Cities Volkssports



These walk directions and maps may only be used in conjunction with a signed American Volkssport Association athletic waiver. All other uses prohibited.



North St Paul Historic Walking Tour East 6 km Route

Copyright 2026 Twin Cities Volkssports



North St Paul was a planned “workingman’s community with industries and housing in a resort atmosphere”. It was the brainchild of Captain Henry Castle, a Civil War veteran, editor of the St Paul *Dispatch* and the owner of a 1200-acre farm on the south and east shores of Silver Lake. He harvested his last crop in the fall of 1886 and had 11 industries, 100 cottages, and numerous stores built between May and December of 1887. His dream of a large city died in the depression of 1893, but the town survives.

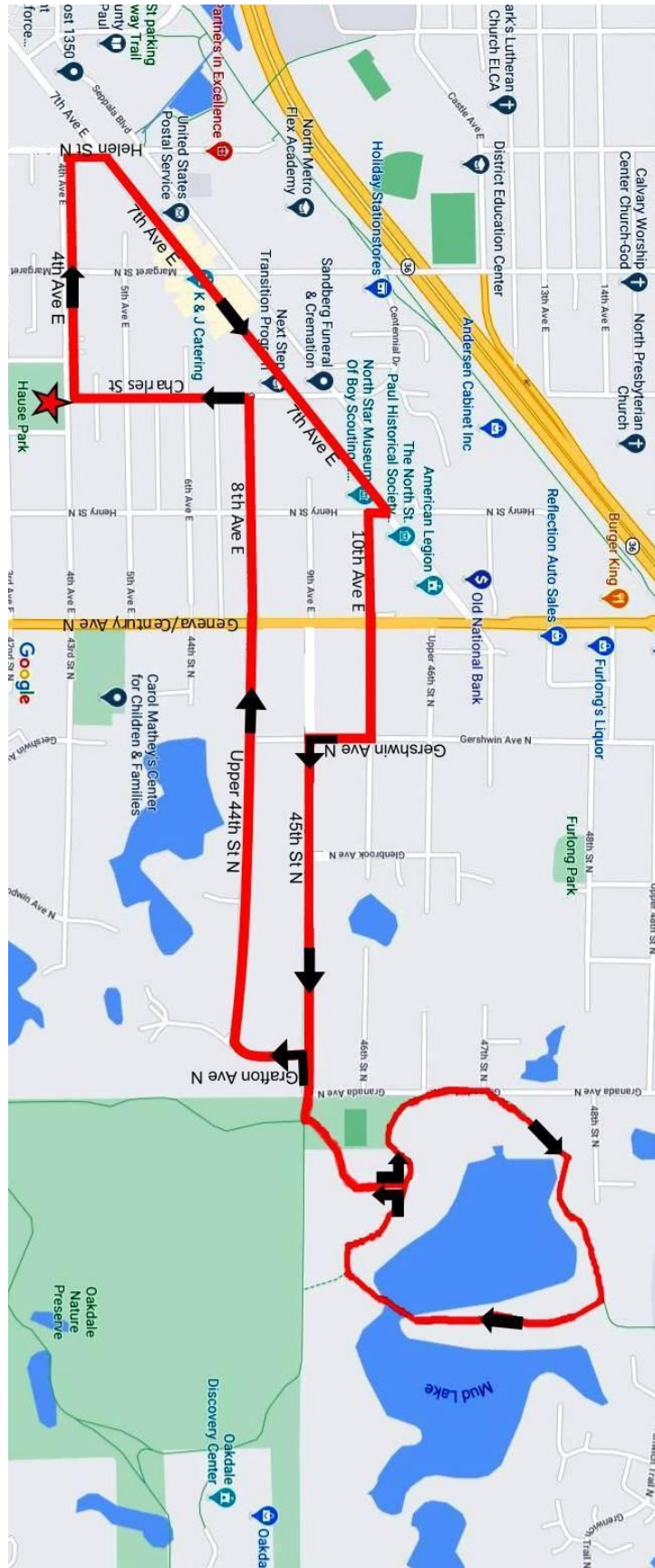
1. **Left** on 4th Ave E to Helen St N
2. **Right** at Helen St N
3. **Right** at 7th Ave E *to pass by sites #1 through #7*
4. **Left** on 7th Ave E
5. **Sharp Right** at Henry St N crossing 7th Ave E continuing **Straight** on 10th Ave E
6. **Cross** Century/Division/Geneva onto 46th St N and
7. **Right** at Gershwin Ave N
8. **Left** at 45th St N
9. **Cross** Granada Ave N onto trail and go straight for 135 feet to kiosk.
10. **Left** at kiosk
11. **Pass** tennis courts on the left
12. **Left** at Karen Schmidt bench to walk clockwise
13. **Right** at next intersection to pass along the peninsula between the two halves of Mud Lake
14. **Right** at next intersection
15. **Left** at next paved intersection returning on the path you came in on.
16. **Second Right** (at kiosk) to Granada Ave N
17. **Cross** Granada Ave N
18. **Left** at Grafton Ave N
19. **Right** at Upper 44th St N
20. **Cross** Century/Division/Geneva Ave onto 8th Ave E to pass sites #9
21. **Left** at Charles St returning to start point at 4th Ave E



In case of Emergency: Dial 911
Event related assistance:
Ken Johnson POC/RD 651-774-9607
Wayne Heath Club President (651) 249-8886

North St Paul Historic Walking Tour East 6 km Route

Copyright 2026 Twin Cities Volkssports





North St Paul Historic Walking Tour East 6 km Route

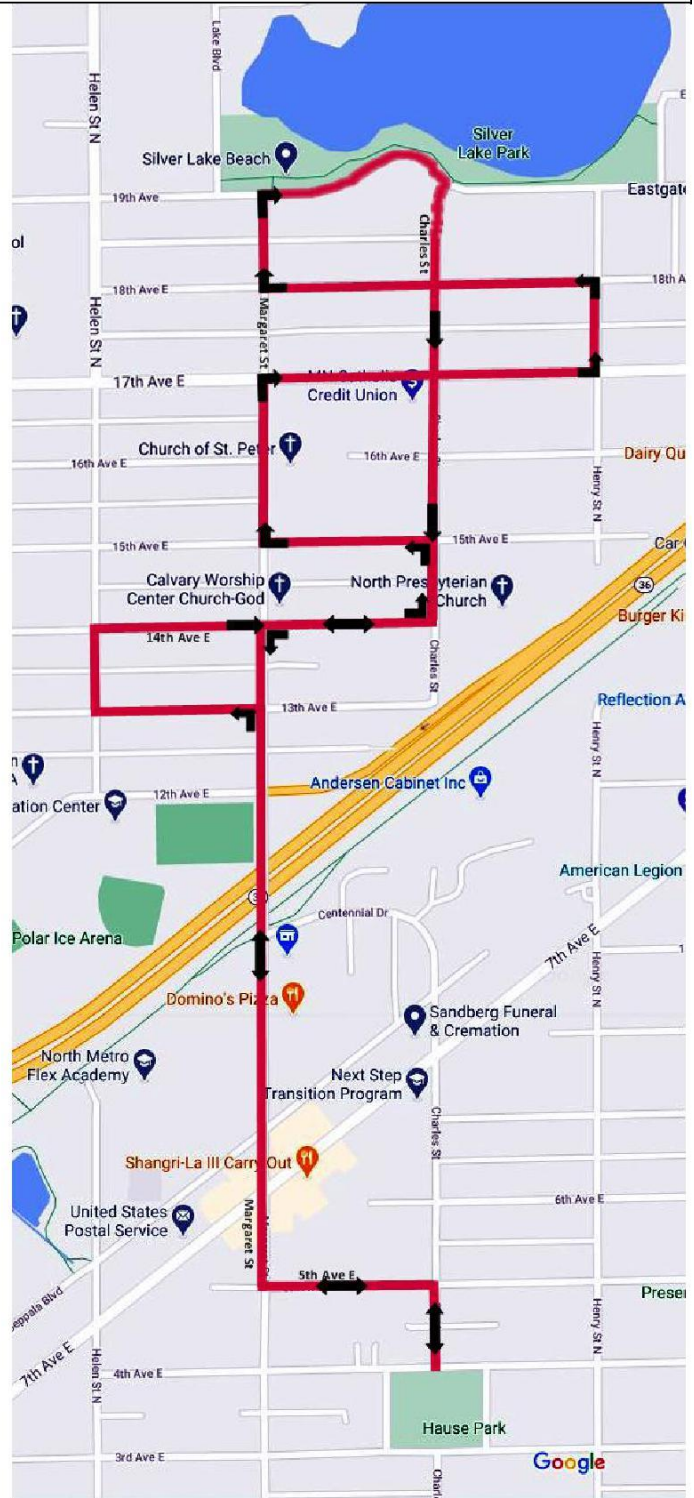
Copyright 2026 Twin Cities Volkssports



1. **2506-08 East Seventh Avenue:** This was the first city hall, built in 1888. Its three stories housed the fire department, police department and other city functions. Later, they were all located at 2526 E Seventh Ave which was razed after a new city hall was dedicated in 2004 at 2400 Margaret Street.
2. **2523 East Seventh Avenue:** The post office with its unique cupola was built in 1935. Inside it has a three-panel mural depicting sturdy rural figures at farm chores. It was created during the 1930s Great Depression when the federal government's WPA program held a national art competition called the "48 states". The North St Paul Post Office was chosen as the location for Minnesota's commission. The mural was painted by Donald Humphrey, whose works also are on permanent exhibition at New York's Metropolitan Museum.
3. **2530 East Seventh Avenue:** Mac's Dinette, built in 1937. Started out as "The Beam," a small hometown restaurant with eight stools and three booths. It was purchased in 1948 by Helen and Mac Mulcahy and renamed "Mac's". In American diner style, it has retained its original design. For many years it was located next to the police and fire department and was called the "eyes and ears" of North St Paul. The building is now vacant.
4. **2534 East Seventh Avenue:** This building has served North St Paul in many ways during the last century. It was hauled brick by brick by Peter Taverna from a location in Wabasha and re-constructed here in 1888. At various times it has been a saloon, a drug store, a variety store and it was the first Rialto theater. The upstairs housed the telephone company and the operators who knew everyone in town. When the new theater was built, this one was probably moved, brought down to the current street grade level and refaced to match the new annex. That theater building was torn down in the 1970s but the old one still stands.
5. **2531 East Seventh Avenue:** Neumann's Bar is a direct link to North St. Paul's first days of existence. Built in 1887, it claims to be the "oldest bar in continuous operation in Minnesota". It began as a workingman's bar (one of many in the town) and three generations of the Neumann family have placed memorabilia here. Generations of North St. Paulites have spent time watching the giant frogs that inhabit the miniature pond in the front window. Inside is a magnificent mahogany backbar installed by the Hamm Brewing Co. when the bar first opened. The ancient silver cash register still rings and the furniture has never been restored. Since the early days, old timers have played cards at the back table for hours. Until after World War II, customers also served as the volunteer fire department and the bar would empty at the first sound of the alarm. The bank's alarm was wired to the bar and guns, and necessary police equipment was kept here for emergencies. Neumann's can be classified as a museum that is not a museum.
6. **2552 East Seventh Avenue:** The Shangri-La is housed in North St. Paul's first bank building. While the location has been changed it is at the same level as the town's earliest buildings.
7. **Seventh Avenue and Charles Street (Southeast Corner):** The Morton House, which was the town's grandest residential hotel, was on this corner. It was the scene of gala balls and dinners. In 1911 it was demolished, and the wood was used to construct homes. In 1932 the Masonic Temple was built on the site and was the home of the Fellowship Lodge until 1999. It was demolished in 2007.
8. **2725 East Tenth Avenue:** The Protz home was built in 1888 by Herman Protz, a German cabinetmaker who moved to North St. Paul from Wisconsin to work in the Luger Furniture factory. This brick Victorian style home remained in the family for nearly all its 100 years.
9. **The Eighth Avenue Cottages:** 2638, 2697, and 2701 were built by the Luger family for their personal use. The trees along Eighth Avenue are some of the last of the 10,000 trees planted by the North St. Paul Land Co. in 1887.

North St Paul was a planned “workingman’s community with industries and housing in a resort atmosphere”. It was the brainchild of Captain Henry Castle, a Civil War veteran, editor of the St Paul *Dispatch* and the owner of a 1200-acre farm on the south and east shores of Silver Lake. He harvested his last crop in the fall of 1886 and had 11 industries, 100 cottages, and numerous stores built between May and December of 1887. His dream of a large city died in the depression of 1893, but the town survives.

1. Exit park northbound on Charles St from 4th Ave E towards 5th Ave E
2. **Left** at 5th Ave E
3. **Right** Margaret St to cross sites #11 and #12 to pass the veteran’s memorial and the world’s largest snowman.
4. **Left** at 13th Ave E
5. **Right** at Helen St N *to pass site #13*
6. **Right** at 14th Ave E *to pass site #14*
7. **Left** at Charles St *to pass site #15*
8. **Left** at 15th Ave E
9. **Right** at Margaret St *to pass site #16*
10. **Right** at 17th Ave E *to pass site #17*
11. **Left** at Henry St N *to pass site #18*
12. **Left** at 18th Ave E *to pass sites #19-21*
13. **Right** at Margaret St N
14. **Right** at 19th Ave *to pass sites #22-23*
15. **Right** at Charles St
16. **Right** at 14th Ave E
17. **Left** at Margaret St N
18. **Left** at 5th Ave E
19. **Right** at Charles and return to start point at 4th Ave E



In case of Emergency: Dial 911
Event related assistance:
Ken Johnson POC/RD 651-774-9607
Wayne Heath Club President 651-249-8886



North St Paul Historic Walking Tour West 5 km Route

Copyright 2026 Twin Cities Volkssports



10. 2566 East Fifth Avenue

The Roy Kyre home is another example of the town's early homes. Built in 1890, it has the fish scale wooden shingles on the gable ends. The owner was an employee of the North St. Paul Casket Company.

11. Seppala Boulevard

Originally, this was the location of the streetcar line that linked North St. Paul to St. Paul and Stillwater. For more than 50 years the cars crossed Colby Hill, turned sharply around the corner by Standard Conveyor, and traveled in back of the main street stores to avoid scaring the horses. At Charles Street the cars turned north and then east again on the present Eighteenth Avenue in route to Wildwood Amusement Park.

12. Margaret Street and Highway 36 (Southwest Corner)

Standing next to the Snowman one must imagine the tracks of the Wisconsin Central Railroad, which was a lifeline in early days. Hikers and bikers now use the walking trail which follows the old railroad track. The former freight house/depot is now located in Heritage Village at the State Fairgrounds. Across Highway 36 was Central Park where a bandstand was the scene of socials and concerts. To the west was the six-story Luger Furniture Company that employed many local people.

13. Twelfth Avenue and Helen Street (Northwest Corner)

Today St. Mark's Lutheran Church stands on the site of North St. Paul's first all-grade school. It was three stories high and had a massive bell tower. In 1916 the original high school was built across the street. It was constructed of yellow bricks made in the brickyard located where the playing fields are now. One of Captain Castle's last acts was the laying of the cornerstone in 1916. The school bell is at the entrance of the current North High School.

14. Margaret and Fourteenth (Northwest Corner)

This church was the original home of St. Mark's Lutheran Church constructed in 1889 on land donated by the North St. Paul Land Co. It is "Carpenter Gothic" in style. It once boasted a tall steeple. St. Mark's was one of the first five English speaking Lutheran churches in the Midwest and celebrated its centennial in 1987.

15. 2675 East Highway 36

On the northwest corner of Highway 36 and Charles is North Presbyterian Church. The church was organized in 1887 and a year later the North St. Paul Land Co. deeded it a lot on Thirteenth Avenue where the first church was built. The congregation stayed at that location until the present building was completed in 1958.

16. 2590 North Margaret Street

After celebrating Mass in rented buildings, St. Peter's Catholic Church incorporated in 1888 and purchased the defunct Congregational Church building at Eighteenth and Margaret. In 1915 a brick church was built, and the older building was remodeled into the town's first parochial school. A new school and convent were built in 1928. On Sept. 7, 2008, a new church was dedicated. It seats 1,100 people. The new building is attached to the old brick church to make a unique structure.

17. North Side of Seventeenth Between Margaret and Charles

Long ago this area was the woodland and meadows home of Dakota Indians. A giant tree directly across from the credit union was deliberately deformed so that it could be used as a trail marker. Silver Lake was an annual stopover for the Indians on their way to the St Croix River. Only a Big stump remains, but this is probably the oldest known historical site in town.

18. 2685 East Eighteenth Avenue

This was once the Ferdinand Korlin home where Christ Lutheran Church was founded. The first church was built at Sixteenth and Helen on land donated by the North St Paul Land Co. It grew rapidly and had to move several times. Today it occupies the brick building on the north side of Seventeenth near Helen.

19. 2609 Eighteenth Avenue

The famous octagon house was originally built in 1887 as a summer home for J. E. Osborne, a member of the North St. Paul Land Co. It was designed with four porches and several marble fireplaces, and the interior woodwork was hand painted by an employee of the North St. Paul Casket Co. Ernest C. Reiff, president of the Casket Co., bought the house for his family. This is the only octagon house in Ramsey County today.

20. 2575 East Eighteenth

This was the home of Charles and Bertha Stevens, probably the most intact and ornate Victorian house in North St. Paul. A Queen Anne style house with fish scale shingles and carved balusters, it was built circa 1887. Its owner was a well-known North St. Paul contractor who built many of the homes and commercial structures here.

21. 2569 East Eighteenth Avenue

This clapboard house was built in the fall of 1887 for Charles R. McKenney and his wife Marie. He was the town's first mayor and owner of the Sentinel, the town's first newspaper. In Queen Anne style, it has its original three-story round corner turret and was built on a terraced hill. A huge rock formerly located on the boulevard on the west side of the house was the meeting place for local teenagers in the early 1900s. Today, the rock rests south of the tennis courts in Silver Lake Park and is still a congregating place for the young.

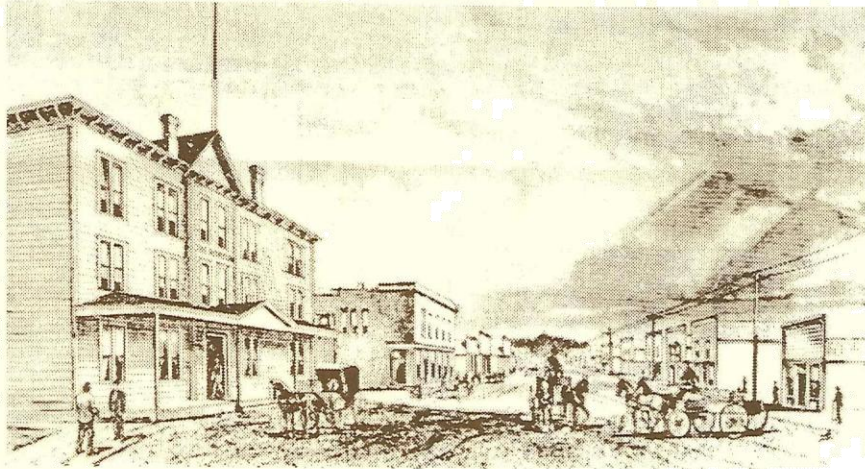
22. 2618 East Nineteenth Avenue

This is the original farmhouse built in 1874 for Captain Castle. The family lived there in the summer and operated the North Star Seed Farms which produced experimental hybrid seeds for northern climates from 1875 to 1880. Castle marketed the seeds nationally from St. Paul. In 2000 a two-story addition was added to the original farmhouse which remains. In 1886 Castle and his family moved into a newly constructed three-story summer home where Castle died in 1916. The house was razed in 1930, and the lumber was used to make bleachers at Franklyn Field.

23. Charles Street at the Lakefront

Silver Lake has played a major role in North St. Paul's history. Looking north across the lake you view the site of the Northwestern Kennel Club, an 1890s dog fancier's paradise. A large two-story building had massive porches where the wealthy of the Twin Cities came to lounge. Club members took the train to town, hiked to a dock located here, boarded the W.S. Morton, a small steamboat, which took them across the lake for 25 cents. The clubhouse grounds are now known as Joy Park. Looking east, but out of

sight, is the original bathing beach which was destroyed with Highway 120's construction. On the present beach (to the west) is the popular children's slide which was the fire escape at Standard Conveyor, one of North St. Paul's former industries.



INTRODUCTION

North St. Paul was a planned "workingman's community with industries and housing in a resort atmosphere." It was the brainchild of Captain Henry Castle, a Civil War veteran, editor of the St. Paul *Dispatch* and the owner of a 1200 acre farm on the south and east shores of Silver Lake. He harvested his last crop in the fall of 1886 and had 11 industries, 100 cottages and numerous stores built between May and December of 1887. His dream of a large city died in the depression of 1893, but the town survives.

1. 2506-08 EAST SEVENTH AVENUE

This was the first city hall, built in 1888. Its three stories housed the fire department, police department and other city functions. Later, they were all located at 2526 E. Seventh Ave. which was razed after a new city hall was dedicated in 2004 at 2400 Margaret Street.

2. 2523 EAST SEVENTH AVENUE

The post office with its unique cupola was built in 1935. Inside it has a three-panel mural depicting sturdy rural figures at farm chores. It was created during the 1930s Great Depression when the federal government's WPA program held a national art competition called the "48 states." The North St. Paul Post Office was chosen as the location for Minnesota's commission. The mural was painted by Donald Humphrey, whose works also are on permanent exhibition at New York's Metropolitan Museum.



3. 2530 EAST SEVENTH AVENUE

Mac's Dinetette, built in 1937. Started out as "The Beam," a small hometown restaurant, with eight stools and three booths. It was purchased in 1948 by Helen and Mac Mulcahy and renamed "Mac's." In American diner style, it has retained its original design. For many years it was located next to the police and fire department and was called the "eyes and ears" of North St. Paul. The building is now vacant.



4. 2534 EAST SEVENTH AVENUE

This building has served North St. Paul in many ways during the last century. It was hauled brick by brick by Peter Taverna from a location in Wabasha and re-constructed here in 1888. At various times it has been a saloon, a drug store, a variety store and it was the first RIALTO theater. The upstairs housed the telephone company and the operators who knew everyone in town. When the new theater was built, this one was probably moved, brought down to the current street grade level and refaced to match the new annex. That theater building was torn down in the 1970s but the old one still stands.

5. 2531 EAST SEVENTH AVENUE

Neumann's Bar is a direct link to North St. Paul's first days of existence. Built in 1887, it claims to be the "oldest bar in continuous operation in Minnesota." It began as a workingman's bar (one of many in the town) and three generations of the Neumann family have placed memorabilia here. Generations of North St. Paulites have spent time watching the giant frogs that inhabit the miniature pond in the front window. Inside is a magnificent mahogany back bar installed by the Hamm Brewing Co. when the bar first opened. The ancient silver cash register still rings and the furniture has never been restored. Since the early days, old-timers have played cards at the back table for hours. Until after World War II, customers also served as the volunteer fire department and the bar would empty at the first sound of the alarm. The bank's alarm was wired to the bar and guns and necessary police equipment were kept here for emergencies. Neumann's can be classified as a museum that is not a museum.

6. 2552 EAST SEVENTH AVENUE

The Shangri-La is housed in North St. Paul's first bank building. While the location has been changed it is at the same level as the town's earliest buildings.

7. SEVENTH AVENUE AND CHARLES STREET (SOUTHEAST CORNER)

The Morton House which was the town's grandest residential hotel, was on this corner. It was the scene of gala balls and dinners. In 1911, it was demolished and the wood was used to construct homes. In 1932 the Masonic Temple was built on the site and was the home of the Fellowship Lodge until 1999. It was demolished in 2007.

8. 2725 EAST TENTH AVENUE

The Protz home was built in 1888 by Herman Protz, a German cabinetmaker who moved to North St. Paul from Wisconsin to work in the Luger Furniture factory. This brick Victorian style home remained in the family for nearly all its 100 years.

9. THE EIGHTH AVENUE COTTAGES

2638, 2640, 2644 and 2662 are examples of the North St. Paul Cottage Co. homes still to be found around town. They were built for workers at a modest cost and sold on the installment plan. After the 1893 depression they sold for as little as \$350.

2689, 2697 and 2701 were built by the Luger family for their personal use. The trees along Eighth Avenue are some of the last of the 10,000 trees planted by the North St. Paul Land Co. in 1887.

10. 2566 EAST FIFTH AVENUE

The Roy Kyre home is another example of the town's early homes. Built in 1890, it has the fish scale wooden shingles on the gable ends. The owner was an employee of the North St. Paul Casket Company.

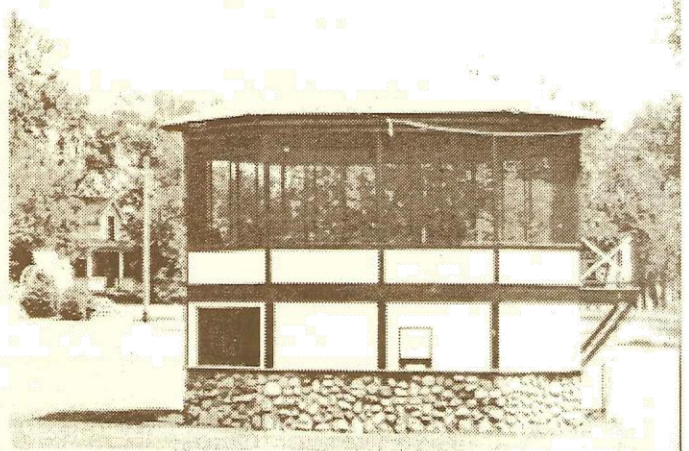
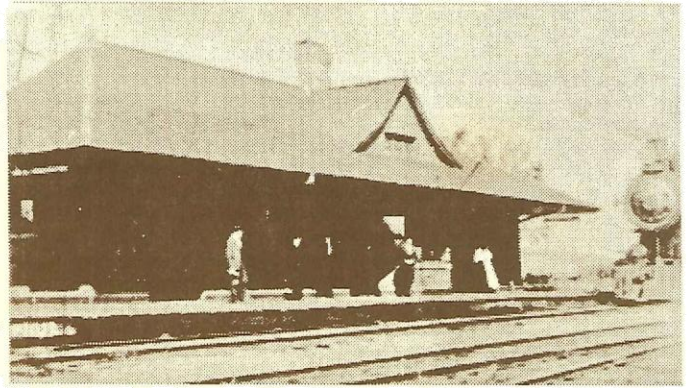
11. SEPPALA BOULEVARD

Originally, this was the location of the streetcar line that linked North St. Paul to St. Paul and Stillwater.

For more than 50 years, the cars crossed Colby Hill, turned sharply around the corner by Standard Conveyor and traveled back of the main street stores to avoid scaring the horses. At Charles Street the cars turned north, then east again on the present Eighteenth Avenue enroute to Wildwood Amusement Park.

12. MARGARET STREET AND HIGHWAY 36 (SOUTHWEST CORNER)

Standing next to the Snowman, one must imagine the tracks of the Wisconsin Central Railroad, which was a lifeline in early days. Hikers and bikers now use the walking trail which follows the old railroad track. The former freighthouse/depot is now located in Heritage Village at the State Fairgrounds. Across Highway 36 was Central Park, where a bandstand was the scene of socials and concerts. To the west was the six-story Luger Furniture Company that employed many local people.



13. TWELFTH AVENUE AND HELEN STREET (NORTHWEST CORNER)

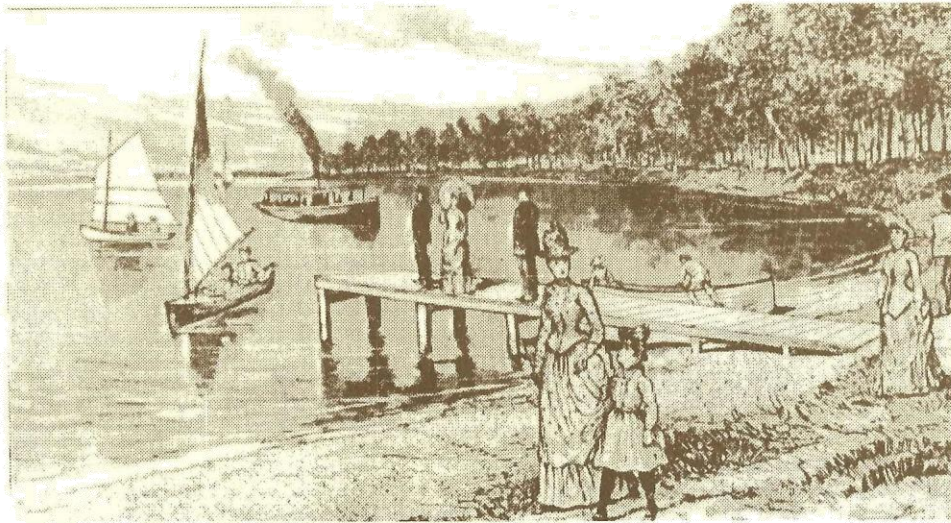
Today St. Mark's Lutheran Church stands on the site of North St. Paul's first all-grade school. It was three stories high and had a massive bell tower. In 1916, the original high school was built across the street. It was constructed of yellow bricks made in the brickyard located where the playing fields are now. One of Captain Castle's last acts was the laying of the cornerstone in 1916. The school bell is at the entrance of the current North High School.

14. NORTHEAST CORNER MARGARET AND FOURTEENTH

This church was the original home of St. Mark's Lutheran Church constructed in 1889 on land donated by the North St. Paul Land Co. It is "Carpenter Gothic" in style. It once boasted a tall steeple. St. Mark's was one of the first five English-speaking Lutheran churches in the Midwest and celebrated its centennial in 1987.

15. 2675 EAST HIGHWAY 36

On the northwest corner of Highway 36 and Charles is North Presbyterian Church. The church was organized in 1887 and a year later the North St. Paul Land Co. deeded it a lot on Thirteenth Avenue where the first church was built. The congregation stayed at that location until the present building was completed in 1958.



16. 2590 NORTH MARGARET STREET

After celebrating Mass in rented buildings, St. Peter's Catholic Church incorporated in 1888 and purchased the defunct Congregational Church building at Eighteenth and Margaret. In 1915, a brick church was built and the older building was remodeled into the town's first parochial school. A new school and convent were built in 1928. On Sept. 7, 2008 a new church was dedicated. It seats 1,100 people. The new building is attached to the old brick church to make a unique structure.

17. NORTH SIDE OF SEVENTEENTH, BETWEEN MARGARET AND CHARLES

Long ago this area was the woodland and meadows home of Dakota Indians. A giant tree directly across from the Silver Lake Market was deliberately deformed so that it could be used as a trail marker. Silver Lake was an annual stopover for the Indians on their way to the St. Croix River. Only a big stump remains, but this is probably the oldest known historical site in town.

18. 2685 SEVENTEENTH AVENUE

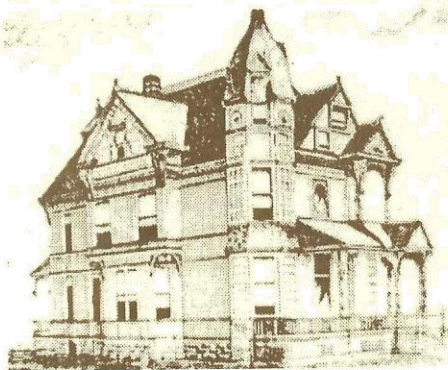
This was once the Ferdinand Korlin home where Christ Lutheran Church was founded. The first church was built at Sixteenth and Helen on land donated by the North St. Paul Land Co. It grew rapidly and had to move several times. Today it occupies the brick building on the north side of Seventeenth near Helen.

19. 2609 EAST EIGHTEENTH AVENUE

The famous Octagon house was originally built in 1887 as a summer home for J.E. Osborne, a member of the North St. Paul Land Co. It was designed with four porches and several marble fireplaces, and the interior woodwork was handpainted by an employee of the North St. Paul Casket Co. Ernest C. Reiff, president of the Casket Co., bought the house for his family. This is the only octagon house in Ramsey County today.

20. 2575 EAST EIGHTEENTH AVENUE

This was the home of Charles and Bertha Stevens, probably the most intact and ornate Victorian house in North St. Paul. A 'Queen Anne' style house with fish scale shingles and carved balusters, it was built circa 1887. Its owner was a well-known North St. Paul contractor who built many of the homes and commercial structures here.



town's first newspaper. In 'Queen Anne' style, it has its original three-story round corner turret and was built on a terraced hill. A huge rock formerly located on the boulevard on the west side of the house was the meeting place for local teenagers in the early 1900s. Today, the rock rests south of the tennis courts in Silver Lake Park and is still a congregating place for the young.

22. 2618 EAST NINETEENTH AVENUE

This is the original farmhouse built in 1874 for Captain Castle. The family lived there in the summer and operated the North Star Seed Farms, which produced experimental hybrid seeds for northern climates, from 1875 to 1880. Castle marketed the seeds nationally from St. Paul. In 2000, a two-story addition was added to the original farmhouse which remains. In 1886, Castle and his family moved into a newly constructed three-story summer home, where Castle died in 1916. The house was razed in 1930 and the lumber was used to make bleachers at Franklyn Field.



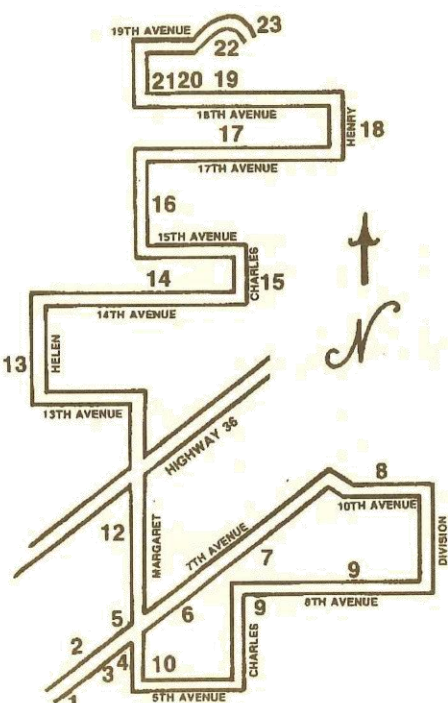
Henry Castle's Villa

23. CHARLES STREET AT THE LAKEFRONT

Silver Lake has played a major role in North St. Paul's history. Looking north across the lake you view the site of the Northwestern Kennel Club, an 1890s dog-fancier's paradise. A large two-story building, it had massive porches where the wealthy of the Twin Cities came to lounge. Club members took the train to town, hiked to a dock located here, boarded the W.S. Morton, a small steamboat, which carried them across the lake for 25 cents. The clubhouse grounds are now known as Joy Park. Looking east, but out of sight, is the original bathing beach which was destroyed with Highway 120's construction. On the present beach (to the west) is the popular children's slide, which was the fire escape at Standard Conveyor, one of North St. Paul's former industries.

We hope you enjoy a glimpse of North St. Paul's history through this tour.

Our thanks to Rosemary Palmer and the Ramsey County Historical Society.



An Historical Tour:

NORTH SAINT PAUL

Sponsored by:
 North St. Paul Historical Society
 2666 E. 7th Ave., North St. Paul, MN
 651-779-6402

"North St. Paul - City on the Heights - Where last May there was nothing but rolling prairie, there is now a busy city" North West Magazine - 1887.