

4 LAKES (WHITE PASS NORTH PCT) HIKE

Please note: The Online Start Box (OSB) system does not deduct any walking fee from a walker's Event Bank until they have submitted walk completion information including the date the event was walked, the distance walked, and the selection of applicable special programs that walker is participating in. (Nevertheless, a fee of \$2 for a downloaded pdf is deducted from the user's Event Bank when the pdf is downloaded. Later, any pdf fees are credited back to a walker's Event Bank when he/she submits the walk completion information as a paying for credit walker.) Walk completion information must be entered within 60 days of registration.

TABLE OF CONTENTS

1. Event Information.
2. Walk Directions – includes driving directions to the start.
3. Map of entire route
4. Other Pacific Crest Trail Hikes

EVENT INFORMATION

Point of Contact: Joe Blazek, joeblazek1@gmail.com 509-899-6535 (cell - leave msg)

Trail Info: On this hike, you can go as far as you want to any or all of the lakes before turning around to return to your car. Early in the season, there may be snow on the trail so check trail conditions. The trail starts with a gradual climb through pine forests. Deer Lake is the largest and most beautiful of the four lakes. Sand Lake is a good place to stop for a snack or dangle your toes in the sandy-bottomed lake. To Beusch Lake the trail goes from meadow to forest and back to meadow climbing only 400 feet with many small ponds and potholes with plenty of mosquitos early in the season. Lastly, Pipe Lake is in the trees below the PCT. The meadows and clearings along the way offer limited views of Mount Adams and the Goat Rocks to the south, Mount Rainier to the northwest and Spiral Butte to the east. Remember, you're in the mountains, so be prepared for changing weather conditions. Carry the ten essentials. Extra clothes, snacks and water, sunscreen, a hat and bug repellent are good ideas. The lakes and ponds can be buggy early in the hiking season. Hiking boots and poles are recommended. Please check current weather and trail information, especially early in the season. You are in the southern part of the William O. Douglas Wilderness area, Okanogan-Wenatchee National Forest -- The Naches Ranger District. The office is at 10237 US Hwy 12, Naches, WA 98937. Phone 509-653-1401. Office hours Monday - Friday, 8am to 12pm and 12:30pm to 4:30pm. No passes sold after 4pm.

Emergency 911 Service: Only available near the trail head.

Restrooms: The only restrooms are at the White Pass Campground and at White Pass ski area if open.

Parking Passes: You must have either a Northwest Forest Pass, America the Beautiful Interagency Annual Pass, an Interagency Senior Pass, or a Military Pass to park on this National Forest Land.

Water is available at each of the lakes if you've brought purification.

Northwest Region Pacific Crest Trail (PCT)
White Pass North - 4 Lakes PCT Hike - Y3190
Deer Lake 6.2Km R/T (3.8 miles) Sand Lake 8.5Km R/T (5.3 miles)
Beusch Lake 18Km R/T (11 miles) Pipe Lake 21Km R/T (13 miles)
900' Elevation gain - Rated 3C

Driving Directions: EB: Drive US-12 to White Pass. At the White Pass Ski Area sign and chalet, continue 0.7 miles east on US-12. Carefully turn LEFT on the gravel road at the "White Pass Campground and Trailheads" sign and drive 0.2 miles on the gravel road to the trailhead parking lot. **WB:** Drive US-12 from Yakima. 1 1/2 miles past the Dog Lake Campground road and at the "Wenatchee NF White Pass Campground and Trailheads" sign on the left, turn RIGHT on the gravel road that goes 0.2 miles to the trailhead parking area. (If you get to the White Pass ski area at the pass, you have gone too far west.) **Then for both EB and WB:** If the trailhead lot is full, park along the gravel access road in a place where you won't block traffic. **Make sure you have the proper parking pass on your vehicle.**

4,400' Elevation. **N46.38' 41.98" W121.22' 56.78"**

1. At the trailhead, fill out a trail hiking pass.
2. From the near corner of the trailhead parking lot, follow the short access trail to the PCT.
3. Turn **LEFT** on the PCT.
4. 0.6Km, **CROSS** the Kendall Connector trail. (xcountry ski trail). Stay on the PCT.
5. 1.6Km, "Y" junction with Dark Meadows Trail. **ANGLE LEFT** and stay on the PCT.
6. 3.0Km, junction with Deer Lake Trail. Turn **LEFT** on Deer Lake Trail. (*Great Lunch Spot*).
7. 3.1Km, Deer Lake. Turn **AROUND** and return on the Deer Lake trail to the PCT.
8. 3.2Km, Turn **LEFT** on the PCT.
9. 4.2Km, Sand Lake and junction with Sand Lake spur trail to the left. Stay **STRAIGHT** on the PCT.
10. 7.2Km, junction with Cortright Trail to the left. Continue **STRAIGHT** on the PCT.
11. 9.0Km, Beusch Lake. Continue on the PCT.
12. 9.7Km, Dumbbell Lake trail junction to the right. There are two large ponds - one on each side of the Dumbbell Lake Trail. **ANGLE LEFT** and stay on PCT.
13. 10.5Km, Pipe Lake is seen through the trees.
14. Turn **AROUND** and return on the PCT to the trailhead and your vehicle.

We hope you enjoyed this hike on the PCT.

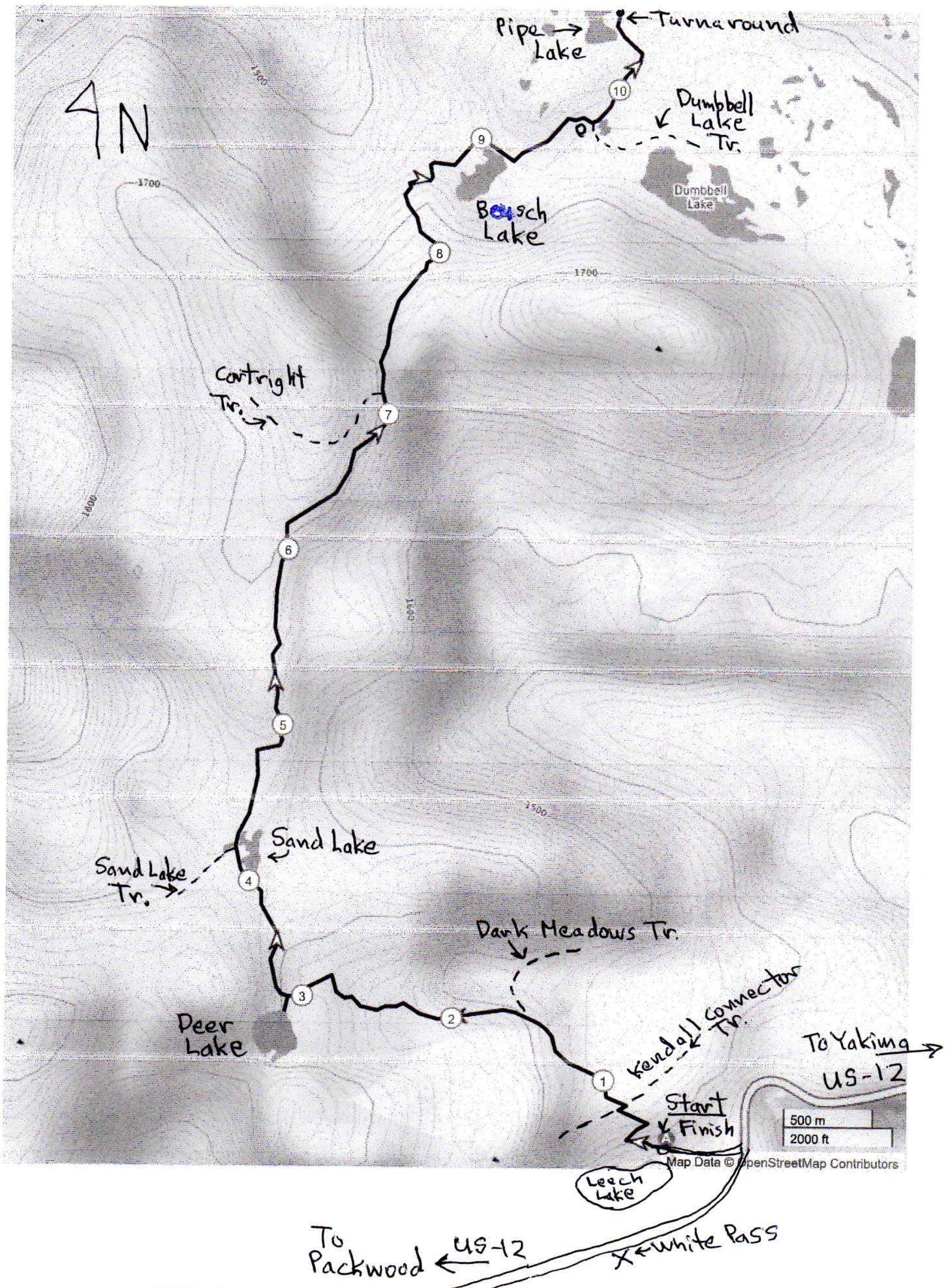
Water is available at each of the lakes. Use water purification.

Be sure to take the 10 hiking essentials with you whenever you hike in the forest.

Emergency cell service 911 may not be available north of the trailhead area.

These directions and map may only be used in conjunction with a signed AVA Athletic Waiver. All other uses are prohibited. © 2025 Evergreen State Volkssport Association

White Pass North 4 Lakes PCT



AVA hikes that qualify for the PCT Special Program Challenge

WASHINGTON:

1. Chinook Pass North – Sheep Lake and Sourdough Gap - Y2763
2. Mt. Rainier National Park -- Naches Loop and Dewey Lakes - Y2050
3. North Bonneville – Gillette Lake - Y2294
4. Snoqualmie Pass North – Kendall Katwalk - Y0786
5. Snoqualmie Pass South – Lodge Lake and Mirror Lake - Y3183
6. Stevens Pass North – Lake Valhalla - Y3182
7. Stevens Pass South – Josephine Lake - Y3184
8. White Pass North - Four Lakes – Y3190
9. White Pass South - Ginnette and Shoe Lakes – Y3191

OREGON:

10. Cascade Locks – Herman Creek Pinnacles - Y1677
11. Eugene, OR – Willamette Pass Rosary Lakes – Y2465
12. Government Camp – Timothy Lake – Y1514
13. McKenzie Pass – Belknap Craters – Y3246
14. Wapinitia Pass – North Twin Lakes – Y3230
15. Sisters, OR – McKenzie Pass Matthieu Lakes – Y2435
16. Willamette Pass – South - Three Lakes – Y3240

CALIFORNIA:

17. Carson Pass – Overviews & Frog Lake -- Y0880
18. Donner Pass – Y1038
19. Round Valley – Castle Valley & Views - Y0983
20. Whitewater – River Trail – Year-round - Y0975