

Instructions
Turner, Oregon
6/10 Km, rated 2B

Walk Start Location: 5280 Boise St SE Turner, OR GPS Coords: 44.84309, -122.95179

Driving Directions: Burkland Park, 5280 Boise St SE, Turner. I-5 Exit 248 (Turner), southbound I-5: Left on Delaney Rd, northbound I-5: Right on Delaney Rd. Keep on Delaney Rd for nearly 3 miles. Right on 3rd. Left on Boise after crossing Mill Street bridge & passing Turnaround Cafe on left. Burkland Park on the right.

Park : Near Burkland Park

Restrooms: Start, to your left at just after 5K, and 8K

“This map and direction may only be used in conjunction with a signed American Volkssport athletic waiver. All other uses are prohibited.”

Copyright 2022, Willamette Wanders of Salem & Keizer, OR Applies to all directions and maps.

WALK COMPLETION AND CREDIT: Be sure to log back into the OSB system to finish/complete your online registration after doing the event. The OSB system does not deduct any event fee from a participant’s Event Bank until they have submitted event completion info including the date the event was walked, the distance walked, and the selection of applicable special programs that person is participating in. Nevertheless, a fee of \$2 for a downloaded PDF is deducted from the user’s Event Bank when the PDF is downloaded. Later, any PDF fees are credited back to a user’s Event Bank when he/she submits the event completion info as a paying for credit participant. Note, however, the \$2 coupon for the downloaded PDF will expire in 60 days.

“Please use either the Online Start Box (OSB) or Physical Start Box (PSB) to register and complete the event. Do NOT mix and match, for example, by registering using the OSB then completing your event using the PSB nor signing the PSB log sheet. The sponsoring club only receives credit for an OSB participation when an OSB registration has been completed online by entering your participation date, distances, and any special programs using the OSB.”

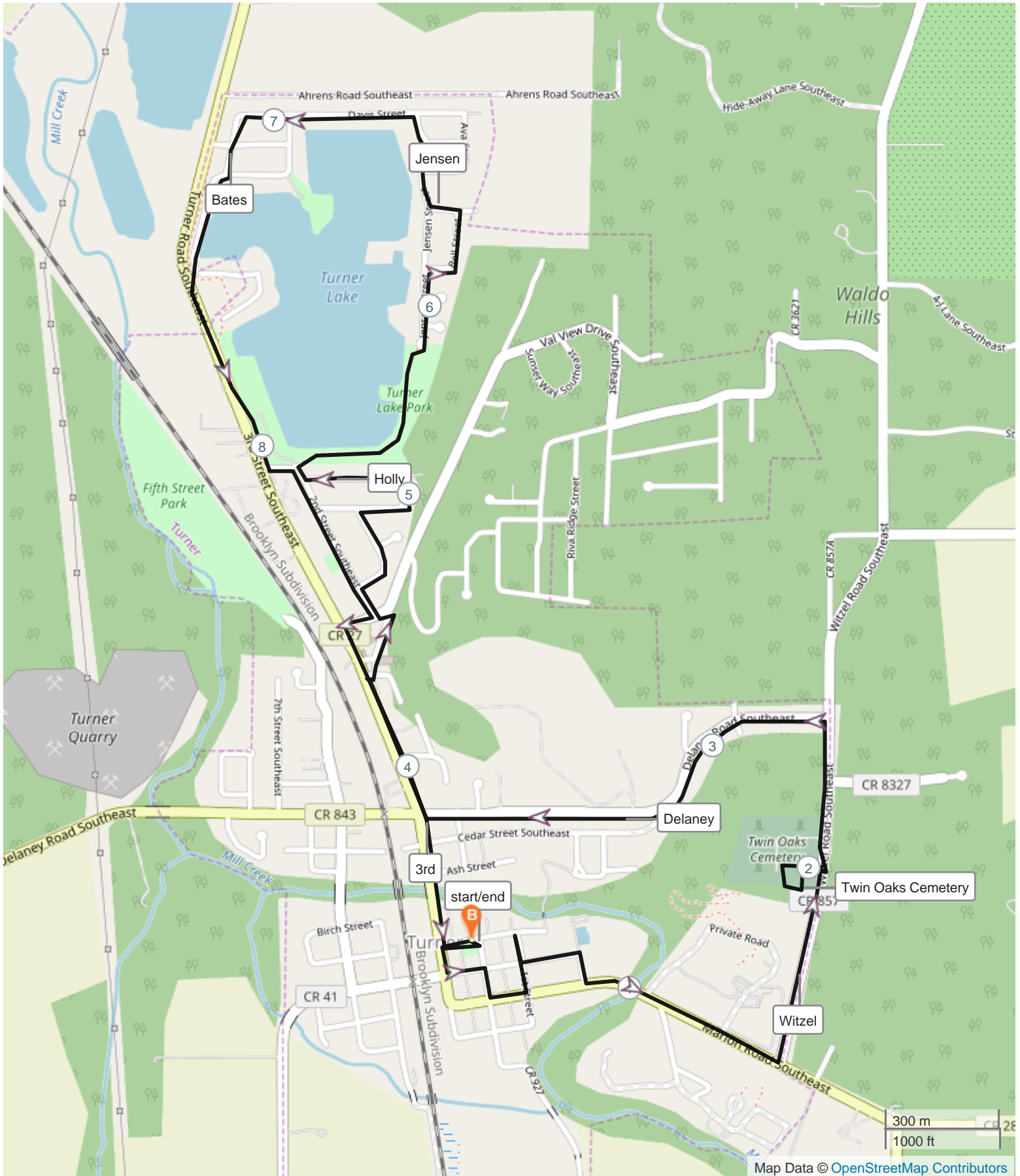
HISTORIC TURNER WALK 2022
WILLAMETTE WANDERERS OF SALEM/KEIZER
Emergency: 911; POC: Lin Crimshaw: 971-599-0778

Walk begins at Burkland Park on Boise St, behind The Turn Around Cafe

1. With Burkland Park on your Left, walk down Boise to 3rd Street.
2. **LEFT** on 3rd Street. Note the Turner historic photos on the side of the building next to Turnaround Café.
3. **LEFT** on Chicago
4. **CROSS and RIGHT** on 2nd Street.
5. **LEFT** on Denver. Stop to read the history of this building on the sign in front of Ball Bros.
6. **LEFT** on First St. *Angel's Share" on right with historic sign in front about this church.
7. **CONTINUE** on First Street for one more block to Judith Turner Memorial Home for Boys (Turner Retirement). See the sign in front for the historic information.
8. **RETURN** back on First Street to Chicago.
9. **LEFT** on Chicago.
10. **CROSS and RIGHT** on School Avenue. Turner Elementary School opened in 1922. Burkland pool is just to the left of the school grounds.
11. **LEFT** on Denver (no sign) for 1/2K for *Turner Memorial Tabernacle 1891* on Right. Denver becomes Marion Rd. at the bridge. **(1K @ Aldersgate white fence)**
12. **LEFT** on Witzel and carefully walk on road shoulder.
13. At the top of the hill, turn **LEFT** to enter Turner Twin Oaks Cemetery. **(2K)**
14. **LEFT** at the T at the end of the cemetery. Stay on the paved trail.
15. Turn **LEFT** and follow the trail to return to Witzel.
16. **LEFT** on Witzel.
17. **LEFT** on Delaney Rd. **(3K at Bella Ct.)**
18. **RIGHT** on 3rd Street **(4K at Elm St.)**
19. **RIGHT** on Fir St. Walk through the Dollar General parking lot onto the gravel alley (2nd St.)
20. **LEFT** onto Val View/2nd Street.
21. Quick **RIGHT** to stay on 2nd Street.
22. **RIGHT** on Webb Drive.
23. **RIGHT** on Holly Loop. Follow Holly Loop around to 2nd Street. **(5K @ 5341 Holly Loop)**
24. **RIGHT** on SE Second Street.
25. Turn **RIGHT** at Turner Lake Park to walk counterclockwise around the lake.
26. **LEFT** onto Jensen St. (no sign) **(6k @ Lucy Ct.)**
27. **RIGHT** on Bell Street.
28. **LEFT** on Jacob Street.
29. **RIGHT** on Jensen Street.
30. **LEFT** on Davis Street.
31. **LEFT** on Bates **(7K @ Crawford St.)** Stay on Bates as it curves right.
32. **RIGHT** onto path at the gap in the fence by the fire hydrant and yellow pole
33. Immediate **LEFT** onto the path paralleling Turner Rd.
34. **RIGHT** on the wide sidewalk at the parking lot toward Turner Road.
35. Keep Left on the path. **(8K at Pavillion)** (restrooms)
36. **CROSS AND LEFT** on Holly.
37. **RIGHT** on SE 2nd.
38. **RIGHT** on Val View Drive.
39. **LEFT** on 3rd.for almost 1K. **(9K @ Larry Londen Drum Lessons)**
40. **LEFT** on Boise to return to Burkland Park **9.72 K**

Turner was founded in 1871 when the California & Oregon Railroad passed through, and named for Henry Turner, pioneer and flour mill owner. Predominately a lumber town until 1974, Population for 2020 was 2,034.

10k Turner



HISTORIC TURNER WALK, Y3222, 2025, 6K ©2024

WILLAMETTE WANDERERS OF SALEM/KEIZER

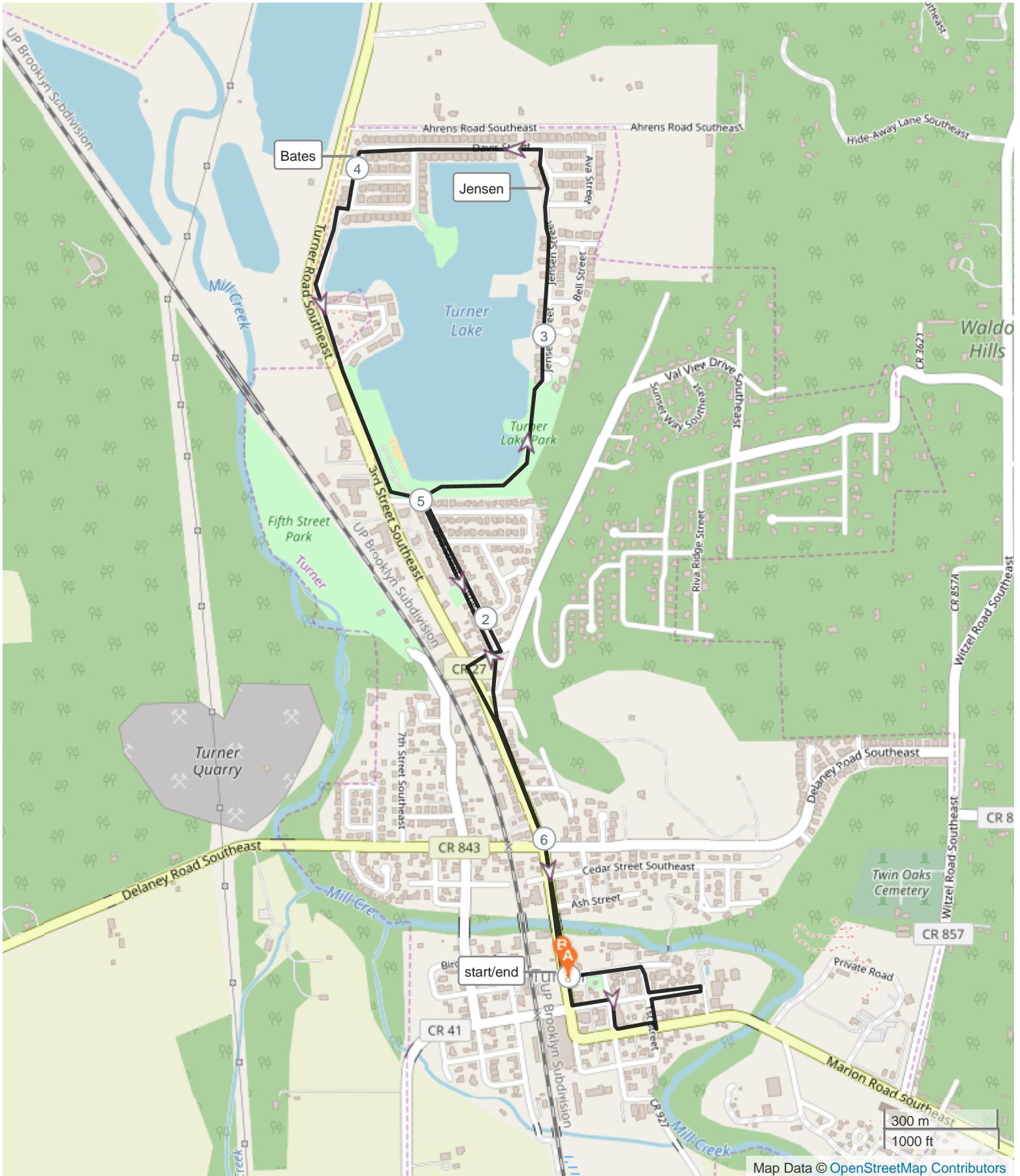
Emergency: 911; POC: Lin Crimshaw: 971-599-0778

1. Leaving Turnaround Café, turn **LEFT** on 3rd Street. Note the Turner historic photos on the side of the building next to the Turnaround Café. **4K**
2. Turn **LEFT** on Chicago.
3. **CROSS & RIGHT** on 2nd Street.
4. Turn **LEFT** on Denver. Check out the sign in front of Ball Bros.
5. **CROSS** First St but then **RIGHT** to use the crosswalk to cross Denver to learn about the Angel's Share church.
6. **CROSS** Denver to return to 1st.
7. Turn **RIGHT** on Chicago to its end,
8. **CROSS & LEFT** on Chicago.
9. Turn **RIGHT** on 1st to Judith Turner Memorial Home for Boys & its history.
10. Turn **LEFT** on Boise to 3rd, passing Turner Retirement Homes.
11. Turn **RIGHT** on 3rd Street and go about 3/4K; **1K**
12. Turn **RIGHT** on Fir Street and immediate **LEFT** to walk through the Dollar General parking lot onto a gravel road.
13. Near Val View Dr enter the post office driveway since gravel road ends in a ditch. **CROSS Val View** to enter 2nd Street. **2K**
14. At end of 2nd, and at entrance to Turner Lake Park, angle **RIGHT** and walk on paved pathway to walk around lake. (Restrooms are about ¼ mile ahead.) **3K**
15. Enter neighborhood and walk straight along Jensen Street.
16. Turn **LEFT** on Davis Street.
17. Turn **LEFT** on Bates Street. (Bates Street has a curve to the right.) **4K**
18. At the end of Bates Street, angle to the **LEFT**, then turn **RIGHT** to get to the walking path. Turn **LEFT** onto the path by fire hydrant and yellow pole. (Restrooms are ahead at the Turner Lake Park **5K**
19. Turn **LEFT** on Holly Street.
20. Turn **RIGHT** on 2nd Street. **5K**
21. Turn **RIGHT** on Val View Drive.
22. Turn **LEFT** on 3rd Street (**6K @ Delaney Rd.**) and return to Turnaround Café to end the walk. **6.4K**

Turner was founded in 1871 when the California & Oregon Railroad passed through, and named for Henry Turner, pioneer and flour mill owner. Predominately a lumber town until 1974. Population for 2020 was 2,034.

These walk directions and maps may only be used in conjunction with a signed American Volkssport Association athletic waiver. All other uses are prohibited.

2025 Turner 6K



2025 CHALLENGES	Turner 10K	Truner 5K
City/TOWN HALLS	8014 3rd St SE	8014 3rd St SE
PAR FOR THE COURSE		
WALKING WITH AMERICA'S VETERANS		
Walk With The Wild Things	6955 2nd st SE	6955 2nd st SE
2025 OTSVA CHALLENGES		
GALLERY		
GARDENS		
GARGOYLE/GNOME	6955 2nd st SE	6955 2nd st SE
ITALIAN		
JUSTICE (COURTS LAWYERS, Etc)	Police 5255 Chicago st	Police 5255 Chicago st
JAPANESE		
JEWELRY		
JAVA	I jive 7825 2nd st SE	I jive 7825 2nd st SE
NATURE		
OVERLOOKS		
PALM TREES	Val View DR	
PARKS	7105 2nd st SE	7105 2nd st SE
PEDESTRIAN BRIDGES		
PLAYGROUND STRUCTURES	7105 2nd st SE	7105 2nd st SE
QUAD		
QUALITY	Trinty Quality Auto 7645 3dr st SE	Trinty Quality Auto 7645 3dr st SE
QUEEN		
STATUES		
SWIMMING POOLS	7800 School Ave	
TOMBSTONES	Turner Oaks Cemetery	
TaXes/Tax Prep	CPA WORX 7770 3rd st SE	CPA WORX 7770 3rd st SE
X-Ray		
Zones - Hospital, School		
2025 ESVA CHALLENGES		
Historic Train Station		
FRONT LINE HEROS		
Med Facilities		
Essential Services	5255 Chicago Polce Station	5255 Chicago Polce Station
Sustenance Providers	5250 Chicago St Turner Market	5250 Chicago St Turner Market
Delivery Services	7230 3rd St USPS	7230 3rd St USPS
Tell Me A Story	7105 2nd St.	7105 2nd St.