

# **WAPINITIA PASS NORTH TWIN LAKES PACIFIC CREST TRAIL HIKE**

**Please note:** Be sure to log back into the OSB system (my.ava.org) to finish/complete your online registration after doing the walk. The OSB system does not deduct any walking fee from a walker's Event Bank until they have submitted walk completion information including the date the event was walked, the distance walked, and the selection of applicable special programs that walker is participating in. (Nevertheless, a fee of \$2 for a downloaded pdf is deducted from the user's Event Bank when the pdf is downloaded. This prepaid fee is applied against the credit fee(s) at the OSB Finish Table when you submit the walk completion info. However, the \$2 coupon for the downloaded PDF expires 60 days from download.)

## **TABLE OF CONTENTS**

- 1. Event Information.**
- 2. Walk Directions – includes driving directions to the start.**
- 3. Map of entire route**
- 4. Other Pacific Crest Trail Hikes**

# WAPINITIA PASS NORTH TWIN LAKES EVENT INFORMATION

**Point of Contact:** Nancy Wittenberg, [newittenberg@gmail.com](mailto:newittenberg@gmail.com)  
253-208-1331 (cell)

Several options for your hike: 1) to Lower Twin Lake and return to trailhead for a 6.5 (7km); 2) Roundtrip to Upper Twin Lake, around lake and back to trailhead for 10k, or 3) as mapped including loop trail back on PCT for 11.6 km (12k). The trail rises gently in elevation, especially at the beginning on the PCT where it is wide and very gradual. You will go through old growth forest, be able to swim or soak your feet in the Lower Twin Lake and have views of Mt. Hood. The Upper Lake is too shallow for swimming.

**Remember, you're in the mountains, so be prepared for changing weather conditions. Carry the ten essentials. Extra clothes, snacks and water, sunscreen, a hat and bug repellent are good ideas. Hiking boots and poles are recommended. Your dog is fine, but must be on a 6' leash.**

**Please check current weather, fire and trail information. Snow, especially early in the season.** You are in the Mount Hood Wilderness of the Mount Hood National Forest – Zigzag Ranger District, 70220 E Highway 26, Zigzag, OR 97049– 503-622-3191. Forest Headquarters is in Sandy, OR, 509-653-1401.

**Emergency 911 Service probably not available north of the trail head area.**

**Parking Passes:** You must have either a Northwest Forest Pass, America the Beautiful Interagency Annual Pass, an Interagency Senior Pass, or a Military Pass to park on this National Forest Land. A \$5 recreation day pass is required. Pay at trailhead.

**Restrooms:** The only restroom (vault toilet) is at the Frog Lakes Trailhead start. Otherwise, it's the "bush toilet" on the route.

**Water** is available at each of the lakes if you've brought purification.

## Northwest Region Pacific Crest Trail (PCT)

### Wapinitia Pass North - Twin Lakes PCT Hike

**Lower Twin Lake 6.5Km R/T (4 miles) 450' elevation gain in/150' out - Rated 3C**  
**Upper Twin Lake and loop trail 11.6Km (7.2 miles) 1,100' elevation gain - Rated 3C**

**Copyright 2022 Evergreen State Volkssport Association**

**Driving Directions: EB:** Drive US-26 to Government Camp. From the Government Camp Rest Area access road, continue 6.7 miles east and south on US-26. Carefully turn **LEFT** at the Frog Lake PCT and Frog Lake Campground signs into the large trailhead parking lot. **WB:** Drive US-26 9.2 miles north and west from the US-26/SR 216 Junction. Turn **RIGHT** at the Frog Lake PCT and Frog Lake Campground signs into the large trailhead parking lot. Vault toilet at the parking lot. 3,920' Elevation. **N45.13' 44.53" W121.41' 57.16"**  
**Make sure you have the proper parking pass on your vehicle.**

**Hike Options: 1) To Lower Twin Lake and back to the trailhead is 6.5Km. 2) Roundtrip to Upper Twin Lake, around the lake and back to the trailhead is 10Km. 3) Entire Loop as mapped is 11.6Km.**

1. Walk to the trailhead to the left of the restrooms. Fill out the hiking pass.
2. Hike **STRAIGHT** ahead on the short access trail to the "T" at the PCT.
3. Turn **RIGHT** on the PCT.
4. At 0.1km, continue **STRAIGHT** on the PCT past the junction with the Frog Lake Trail on the right.
5. At 2.1km, at the trail junction, turn **RIGHT** on the Twin Lakes Trail (Trail #495). You'll soon go down a hill and see the Lower Twin Lake through the trees.
6. At 3.2km at the Frog Lakes Buttes Trail junction, turn **RIGHT** on the short way trail to Lower Twin Lake.
7. If you choose, there's a trail around the lake, which is deep enough to swim in or at least soak your feet.
8. At Lower Twin Lake, turn **AROUND** and return on the short way trail back to the Twin Lakes Trail,

12. **For 10km**, turn **RIGHT** circling back on the east side of Upper Twin Lake to the junction with the Twin Lakes Trail. Turn **LEFT** on the Twin Lakes Trail and return the way you came passing Lower Twin Lake to the PCT. Turn **LEFT** on the PCT and go to #17. **OR,**
13. **For the full 11.6km**, turn **LEFT** continuing on the Twin Lakes Trail.
14. At 5.6km stay **STRAIGHT** on the Twin Lakes Trail past a trail junction on the right.
15. At 7.0km at the trail junction with the PCT, turn **LEFT** on the PCT.
16. At 9.5km at the trail junction with the Twin Lakes Trail, stay **STRAIGHT** on the PCT.
17. At 11.5km, turn **LEFT** on the short access trail to the trailhead, the parking lot and your vehicle.

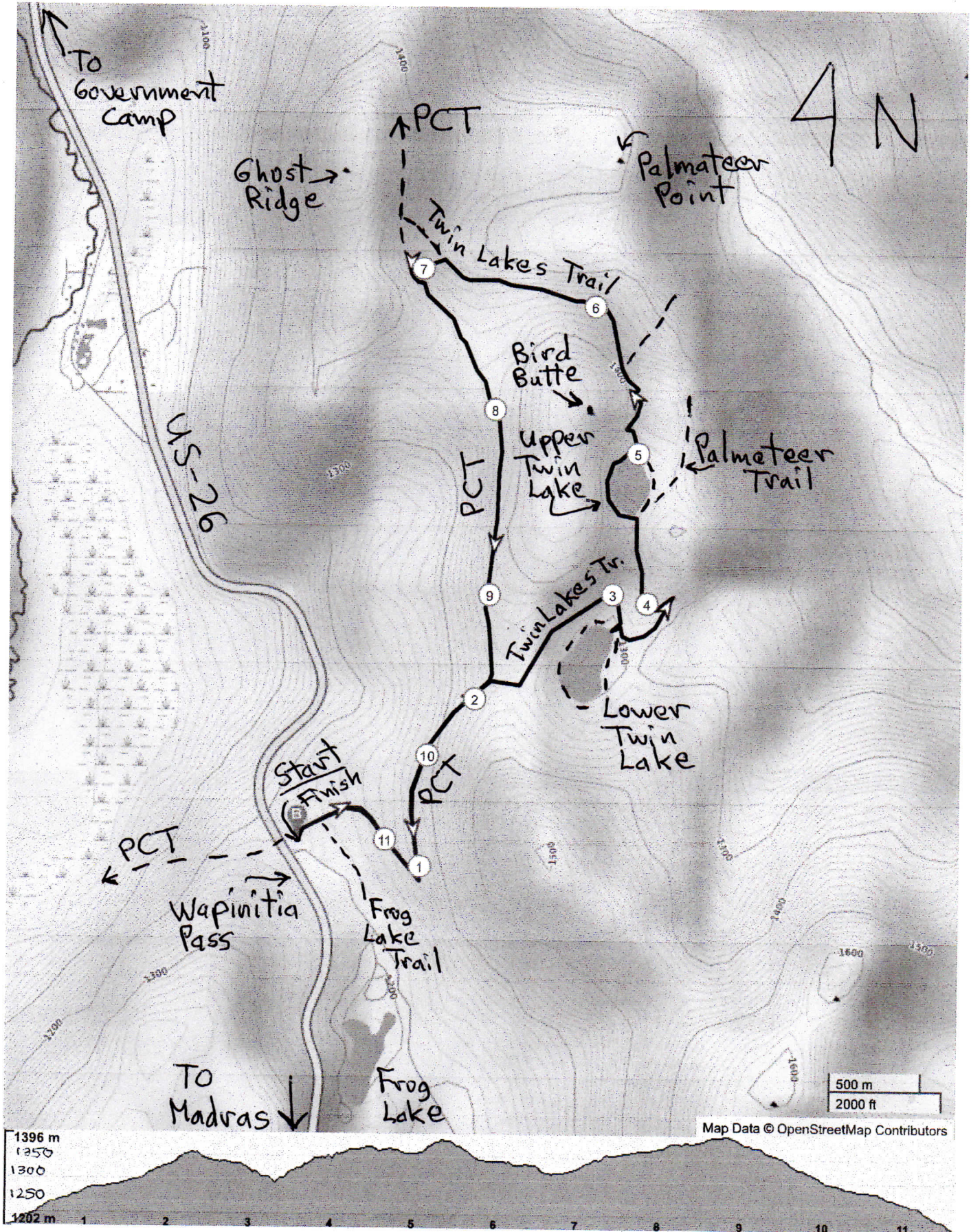
We hope you've enjoyed this hike on the PCT to Twin Lakes.

**For the 6.5km hike** turn **LEFT** on the Twin Lakes Trail and return the way you came. Turn **LEFT** on the PCT and go to #17. **Otherwise:**

9. Turn **RIGHT** on the Twin Lakes Trail.
10. At 4.5km at the trail junction at the south end of Upper Twin Lake, turn **LEFT** on trail and go around the left side of Upper Twin Lake.
11. At 4.8km, at the trail junction at the north end of Upper Twin Lake you have a choice:

These directions and map may only be used in conjunction with a signed American Volkssport Association Athletic Waiver. All other uses are prohibited.

# Wapinitia Pass North Twin Lakes PCT Hike



## **PACIFIC CREST TRAIL HIKES**

### **WASHINGTON:**

- 1. Chinook Pass – Sheep Lake and Sourdough Gap - Y2763**
- 2. Mt. Rainier National Park -- Naches Loop and Dewey Lakes - Y2050**
- 3. North Bonneville – Gillette Lake - Y2294**
- 4. Snoqualmie Pass – Kendall Katwalk - Y0786**
- 5. Snoqualmie Pass – Lodge Lake and Mirror Lake - Y3183**
- 6. Stevens Pass – Lake Valhalla - Y3182**
- 7. Stevens Pass – Josephine Lake - Y3184**
- 8. White Pass – North Four Lakes – Y3190**
- 9. White Pass – South Ginnette and Shoe Lakes – Y3191**

### **OREGON:**

- 10. Cascade Locks – Herman Creek Pinnacles - Y1677**
- 11. Eugene, OR – Willamette Pass Rosary Lakes – Y2465**
- 12. Government Camp – Timothy Lake – Y1514**
- 13. McKenzie Pass – Belknap Craters – Y3246**
- 14. Wapinitia Pass – North Twin Lakes – Y3230**
- 15. Sisters, OR – McKenzie Pass Matthieu Lakes – Y2435**
- 16. Willamette Pass – South - Three Lakes – Y3240**

### **CALIFORNIA:**

- 17. Carson Pass – Overviews & Frog Lake -- Y0880**
- 18. Donner Pass – Y1038**
- 19. Round Valley – Castle Valley & Views - Y0983**
- 20. Whitewater – River Trail – Year-round - Y0975**