



The Mon Valley Trailblazers Club Welcomes You to the Johnstown, PA Seasonal Walk

These two AVA rated 1B walks are composed of a 5k walk through downtown Johnstown and a 5k walk through the Westmont neighborhood of Johnstown. There is an option for a 3k extension of the downtown walk through the Cambria section of the city. The start/finish point is the Holiday Inn at 250 Market St.

The Westmont 5k walk requires a short drive from the start/finish point until the incline opens. Unfortunately, the Johnstown Incline Railway, which provides the link between the walks, is closed for repairs but will reopen late summer 2023.

Due to the Incline Railway closure, walkers will have to drive up the hill to the Westmont neighborhood for the second 5k. The start point is a small local park referred to as "The Mound". The mound is dominated by an oversize American Flag at the top of the hill, with nice views in all directions. AVA does not cover driving between event segments.

Walk Registration: Please use the online start box provided by AVA at website (<https://my.ava.org>). Follow the 'Online Start Box', and the instructions provided to sign a waiver and register for this event. Follow directions to make payments for event credit and directions. The directions and insert cards are PDFs that you can download and print as needed. The POC does not provide event directions or accept alternate payment methods. The entire online process should take less than 10 minutes for a first time user. There are bathrooms at various locations throughout the town.

Walk Completion and Walk Credit: Once you have physically completed the walk, please login to your Online Start Box account and select the "Maps/Finish" tab. Use the displayed entry form to submit the date and distance of your walk and select applicable AVA Special Programs to generate stamped "virtual" insert cards that you may print out.

Table of Contents: Use the table below to guide you on what you need to print out.

Section Contents	Pages
Introduction, Walk Registration/Completion, and Table of Contents	1
Driving and Walk Directions	2-4
Map of Downtown Johnstown 5K	5
Driving Directions to Westmont	6
Walk Directions for Westmont 5K and Special Programs	7
Map of Westmont 5k	8

Driving Directions:

From the North: Take I-79 S, Take exit 99 from I-79 S, Continue on US-422 E to PA-954 S., Take the PA-954 S exit from US-422 E, Take PA-56 E to 250 Market St in Johnstown.

From the South: Get on I-97 N, Take I-695 W, I-70 W and I-76 W to PA-56 W/US-220 BUS N in Bedford Township, Take exit 3 from I-99 N/US-220 N, Get on PA-56 W/US-219 N in Richland, Continue on PA-56 W/Johnstown Expy., Drive to Walnut St in Johnstown, Follow Walnut St and Vine St to 250 Market St in Johnstown

From the West: Get on I-70 E in Zanesville from OH-229 E, OH-586 S and OH-146 E/Newark Rd, Get on US-22 E in Salem Township, Follow US-22 E and PA-403 S to 250 Market St in Johnstown

From the East:

Take I-76 W to PA-56 W/US-220 BUS N in Bedford Township. Take exit 3 from I-99 N/US-220 N. Get on PA-56 W/US-219 N in Richland

Continue on PA-56 W/Johnstown Expressway to Johnstown, Follow Walnut St and Vine St to 250 Market St in Johnstown

TRAIL: This trail goes through downtown Johnstown and along the river.

FEES: IVV Credit only is \$3.00. Free walkers are not permitted.

STIPULATIONS: Pets are permitted but must be leashed and picked up after. No pets permitted in buildings.

Below are the directions and map for the downtown Johnstown 5k walk. Those wishing to do a 10 km walk will continue to follow the 5 km directions and map of the walk. You will return to the start point to finish the walk.

Downtown Johnstown Walk Directions

Driving Directions to the Start point: See the above directions.

Start Point: The Johnstown Holiday Inn 250 Market St, Johnstown, PA 15901 .

Restrooms: Restrooms are available at the Start Point 24/7 and throughout the town.

Phone Numbers:



In case of Emergency: Dial 911
Event related assistance: Lori Lamberski: 724-858-5965

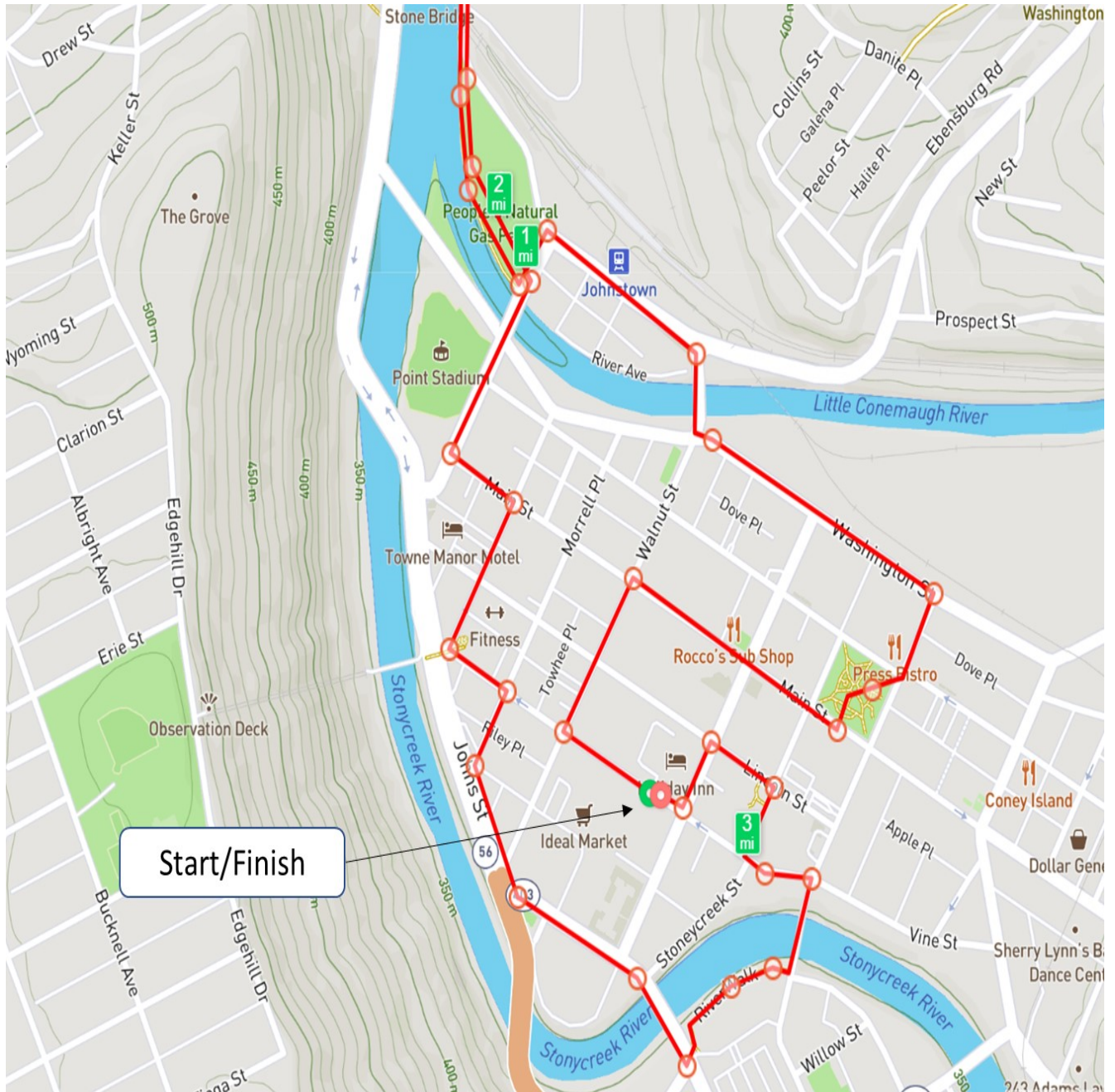
These walk directions and maps may only be used in conjunction with a signed American Volkssport Association waiver. All other uses are prohibited.

Walking Instructions:**Begin Downtown 5k**

- 1) Exit the Holiday Inn, turn Right on Vine St.
- 2) Turn Right on Walnut St (first Intersection).
- 3) Proceed for two blocks and turn Right on Main St.
- 4) Walk two blocks on Main St. Cross Main St at Gazebo Park Dr, then cross Gazebo Park Dr to the park.
- 5) Halfway down the block, turn into the park and view the statue of Johnstown's founder.
- 6) Wander through the park, enjoying the trees and monuments to exit at the Northwest corner (intersection of Locust and Franklin Streets.)
- 7) Turn Left on Franklin St., cross Locust St, and continue one block to Washington St.
- 8) Turn Left on Washington St.
- 9) Continue Four blocks to the Johnstown Flood Museum (on your left). If desired, stop and explore the museum.
- 10) At the next intersection, cross Walnut St. and turn Right to cross Washington St.
- 11) Stay on Walnut St to cross bridge over the Little Conemaugh River.
- 12) Turn Left after crossing bridge to remain on sidewalk at it curves left.
- 13) Continue to next intersection, passing the Amtrak station on the other side of the road. There are public restrooms available in the station.
- 14) At the next intersection continue straight to cross John St. to the front gate of People's Natural Gas Park. Turn left to follow the sidewalk until just before crossing the Clara Barton memorial bridge.
- 15) Turn Right to enter the walking trail on the East side of the Conemaugh river.
- 16) Follow trail until it ends at a small building next to the river. Walk around building to the right and into the entrance to the bridge.
- 17) Cross the bridge. At the far end, turn around and retrace your steps back to the East side of the river.
- 18) Turn Right and retrace your steps to the beginning of the trail. Turn Right on John St and cross Clara Barton bridge.
- 19) Continue on John St. Take the third Left after the bridge- Main St.
- 20) After one block on Main St., turn Right on Union St.
- 21) Continue on Union St for two blocks. Turn Left on Vine St.
- 22) After one block, turn Right on Morrell Place.
- 23) Continue on Morrell Place until it dead ends into Roosevelt Blvd.

- 24) Turn Left on Roosevelt Blvd.
- 25) At 1st next intersection, cross Walnut St and Napoleon St to small park.
- 26) Turn Left on Napoleon St, passing park with statue of John Murtha.
- 27) Continue on Napoleon St with 1st Summit arena on your right.
- 28) Cross Lee Place and continue across bridge over Stonycreek river.
- 29) At next intersection, turn left to cross Napoleon St and continue straight onto the Riverwalk.
- 30) Follow Riverwalk, with Stonycreek River on your Left, to next intersection, Franklin St.
- 31) Turn Left on Franklin St.
- 32) Cross over River and turn Left on Vine St.
- 33) After passing First United Methodist Church on your left, turn Right at the next crosswalk to cross Vine St. and continue straight on the path next to First Lutheran Church.
- 34) Continue to the next St (Lincoln St) and turn Left.
- 35) At the next intersection, Market St., Turn Left for one block.
- 36) Turn Right on Vine St and return to the start point.

End of Downtown 5k



Downtown Johnstown 5k

Walking Instructions:**Begin Westmont 5K****Driving Directions to Westmont Start Point:**

From the Holiday Inn entrance, turn Right onto Vine St. Continue to turn right onto PA-403 N/PA-56 W (Roosevelt Blvd.)

Turn Left onto Broad St.

Turn Left on 6th Avenue that bends to the left and becomes McCona St as it goes up a ramp and over the railroad tracks.

McCona St. turns right and becomes Gilbert St. Continue uphill, coming to a four-way intersection.

Turn left onto Habicht St.

Take the 6th Right (Sharp Turn) onto Crystal St.

Take the first Right onto Bucknell Ave. Immediately after passing the large park your left, turn Left onto Greene St. Parking is on your left along the street.

Walking Directions for Westmont:**Start Point:**

Southwest corner of the Mound Park in Westmont.

Begin Westmont 5k:

1) From the Southwest corner of Mound Park, turn Right on Bucknell ave.

2) Continue for six blocks to Wyoming Ave.

3) Turn Right on Wyoming and continue to end.

4) Turn Right on Edgehill Dr.

5) Continue to the observation deck next to the incline Railway. Stop and enjoy the view of Johnstown. The great Johnstown flood of 1889 came flowing out of the Little Cambria River opening directly across the valley.

6) Return to Edgehill, turn left to continue on Edgehill Dr. (if desired, climb the steps across the street to the top of Mound Park for a 360° view of the surrounding terrain. Then return to Edgewood Dr, turning Right at the bottom of the stairs.)

7) Continue on Edgehill to the end, then turn Right on Tioga St.

8) Continue on Tioga St for one block, then turn Left on Bucknell Ave.

9) Continue on Bucknell for one block and turn Right on Luzerne St.

10) Continue for eight blocks on Luzerne St, to intersection with Diamond Blvd. (just after passing the school complex on your left.)

11) This is the turnaround point. There is a small café on the corner- The Mill House Café with a restroom available. If you want to have a meal, Clark's Corner Store and Deli is located one block down Diamond Blvd.

12) From the turnaround point, retrace your steps on Luzerne St for one block to Hood Ave.

13) Continue to end of Hood ave. and turn Right on Tioga St.

14) Take the first left onto Colgate Ave.

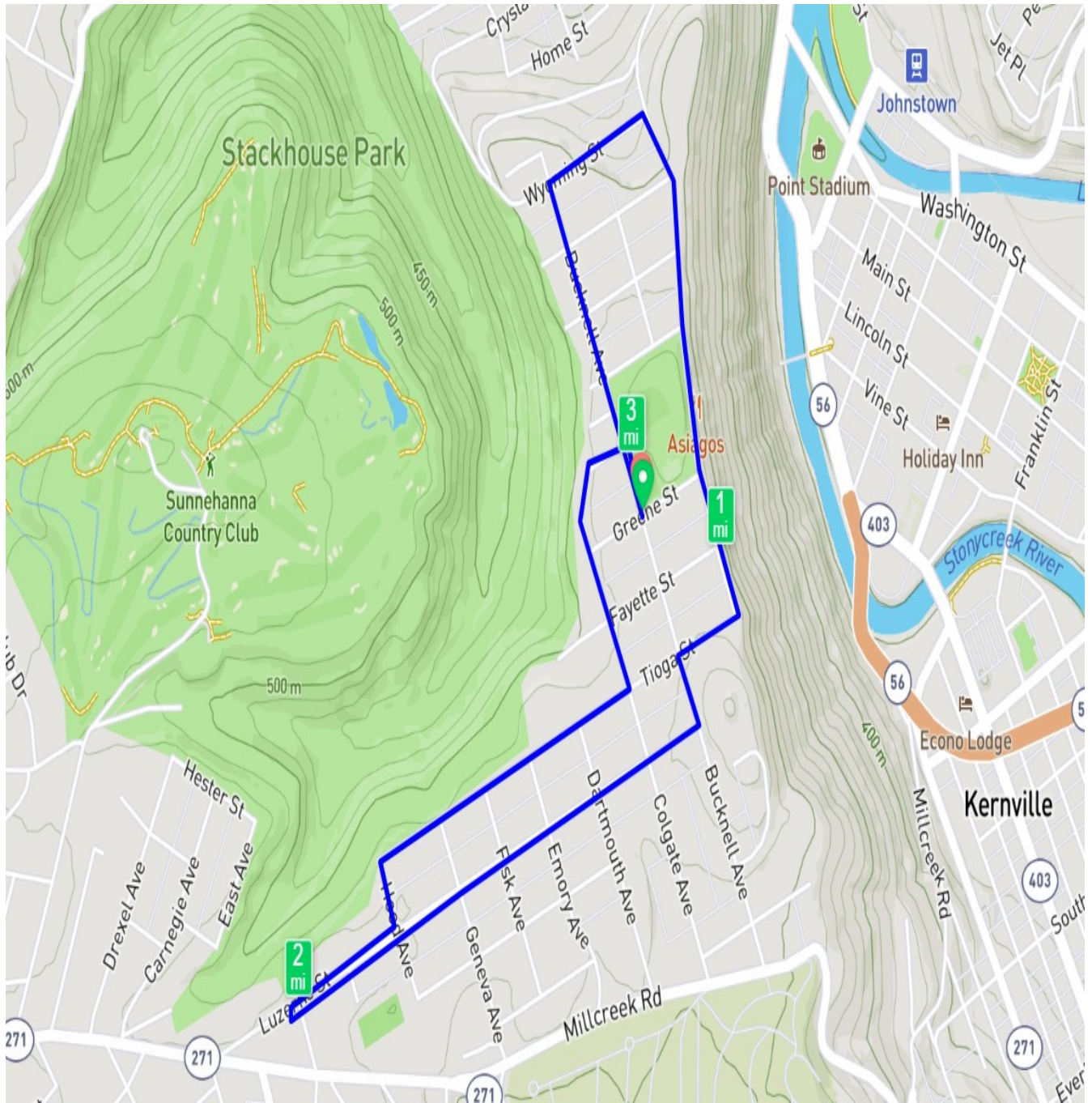
15) Follow Colgate ave. as it curves and to the Right and becomes Mifflin St.

16) At the end of Mifflin St, turn Right on Bucknell Ave to the start point.

17) If desired, explore the park at your leisure.

End of Westmont 5k

Special Programs: Rockin Around the Clock, Walking with America's Veterans, Walking the United States (51 States/51 Capitals), Walking the USA A-Z.



Westmont 5k