

Columbus Junction, IA – Louisa County 5K, 7K, and 11K

Registration: Please use the Online Start Box (OSB) to register and complete the event.

Start/Finish location for all walks: Corner of Main and Walnut Streets, Columbus Junction, Iowa.

Driving directions to start point: From Iowa Highway 92 (Oak Street), turn left on Main Street. Drive one block north to Walnut. From Iowa Highway 70, turn right on 2nd Street. At the Y intersection, turn left to stay on 2nd Street. At Walnut Street, turn left and drive to Main Street.

Parking: Street parking is available on Main and other nearby streets.

Restrooms: Casey's General Store, 201 Eastern Access Road. From Walnut and Main, continue east on Walnut as it curves south and becomes Eastern Access Road. Casey's is located at the intersection with Iowa Highway 92 (Oak Street).

Trail Ratings: 5K and 11K – 3B; 7K – 1B

Accessibility: The 5K route has some significant hills, broken sidewalks, and areas without sidewalks; it requires crossing a wooden plank swinging bridge over a ravine. The 7K route is mostly flat on a crushed limestone trail. The 11K route combines the 5K and 7K routes.

Wheelchairs: No. **Strollers:** Some difficulty.

Special Programs: **5K and 11K:** Par for the Course; **7K and 11K:** Rails to Trails

Walk Description: Columbus Junction sits atop and along the Chinkapin Bluffs on the west side of the Iowa River. The 5K walk will take you through this small town of about 1,800 residents to visit neighborhoods, local parks, downtown businesses, and the historic Louisa County Swinging Bridge. The 7K walk is along a portion of the Hoover Nature Trail, a crushed limestone rail trail at the foot of the bluffs through the wooded flood plain of the Iowa River. Walkers can choose to walk one or both trails, as they start and end from the same location.

Other Things to Do Nearby:

- Eden Park, a 146-acre county park that sits just northwest of Columbus Junction on County Road X17, is open to the public for hiking, bird watching, and enjoying nature. It features grasslands, wetlands, two creeks and forests.

IN CASE OF EMERGENCY: Dial 911

Point of contact for walk-related assistance: Robin Madison, 515-238-4536

These walk directions and maps may only be used in conjunction with a signed American Volkssport athletic waiver. All other uses are prohibited.

© Copyright 2023, Iowa's Walking Club

Start Point: Corner of Walnut and Main Streets
Columbus Junction, Iowa
Louisa County

5K, 7K, and 11K Directions

5K: Start with Step 1

7K: Start with Step 18

11K: Complete the entire route, starting with either Step 1 or Step 18

NOTES: Alleyways run north/south between blocks throughout much of Columbus Junction. When traveling east/west, watch for street signs to avoid confusing streets with alleyways.

Numbered streets run North/South. Named streets and avenues run East/West.

1. 5K and 11K: From the corner of Walnut and Main Streets, look for Washington State Bank on the northwest corner of the intersection. Walk north on Main, keeping the Bank on your left.

As Walnut curves to the left, it becomes Locust Street. Continue on Locust to 3rd Street.

Monkey Run Park will be on your left between 2nd and 3rd Streets.

2. **Left** on 3rd Street for 2 blocks to Oak Street (Hwy 92). Cross the highway with caution.
3. Continue on 3rd Street to its end at Elm Street and the entrance for the Historic Swinging Bridge.

Alternative to Swinging Bridge: A path through the valley below the bridge can be accessed from the gravel parking lot on your right after crossing Oak Street. It comes out near the other end of the bridge on 4th Street. The path is steep and combines dirt

trail with some reinforced steps. Not recommended in wet weather.

4. **Right** to cross the Swinging Bridge to 4th Street. The bridge exits into a local park. The park road is 4th Street.
5. **Left** on 4th Street to Cherry Street.
6. **Left** on Cherry Street to 2nd Street.
7. **Right** on 2nd Street for 4 blocks to Springer Avenue.
8. **Right** on Springer Avenue to Colton Street.
9. **Right** on Colton Street for 1 block to Gamble Street.
10. **Right** on Gamble Street to its end at Main Street.
11. **Left** on Main Street for 1 block to Hickory Street.
12. **Right** on Hickory Street. Keep left, passing Chautauqua Park and an access to Chinkapin trails on the right, until Hickory ends in a circle drive.
13. **Return** on Hickory to Chautauqua Park. Turn **Left** to follow the circular roadway on the edge of the park, returning to Hickory Street.
14. **Left** on Hickory to 2nd Street.
15. **Right** on 2nd Street for 3 blocks to Maple Street.

16. **Right** on Maple Street to Main Street.
17. **Left** on Main Street. Return to the start point at the Corner of Main and Walnut, crossing Oak Street (Hwy 92) with caution.

Decision Point: This completes the **5K walk**. **11K walkers** continue with these directions. **7K walkers** begin walking here.

18. At the intersection of Main and Walnut, face Washington State Bank on the northwest corner.
19. **Right** on Walnut, away from the Bank. Follow Walnut to its end where it joins Eastern Access Road.
20. **Right** on Eastern Access Road, passing the Casey's on your right, to Oak Street (Hwy 92).

Restrooms are available at Casey's.

21. **Cross** the highway with caution. Eastern Access Road becomes Fairground Road

(gravel). Continue straight on Fairground Road, keeping to the **Right**, until the road curves to the left. The trailhead for Hoover Nature Trail will be on your **Right**, with a gravel parking lot and the fairgrounds grandstand on your left.

22. **Enter** the Hoover Nature Trail through the trailhead and turn **Left** onto the trail. Follow the trail to its end and return to the trailhead.
23. From the trailhead, turn **left** onto Fairground Road and retrace your steps, following Eastern Access Road and Walnut, to return to the start point at the corner of Walnut and Main.

Thanks for walking with Iowa's Walking Club.

Don't forget to go back to the Online Start Box and complete your walk at the finish table.

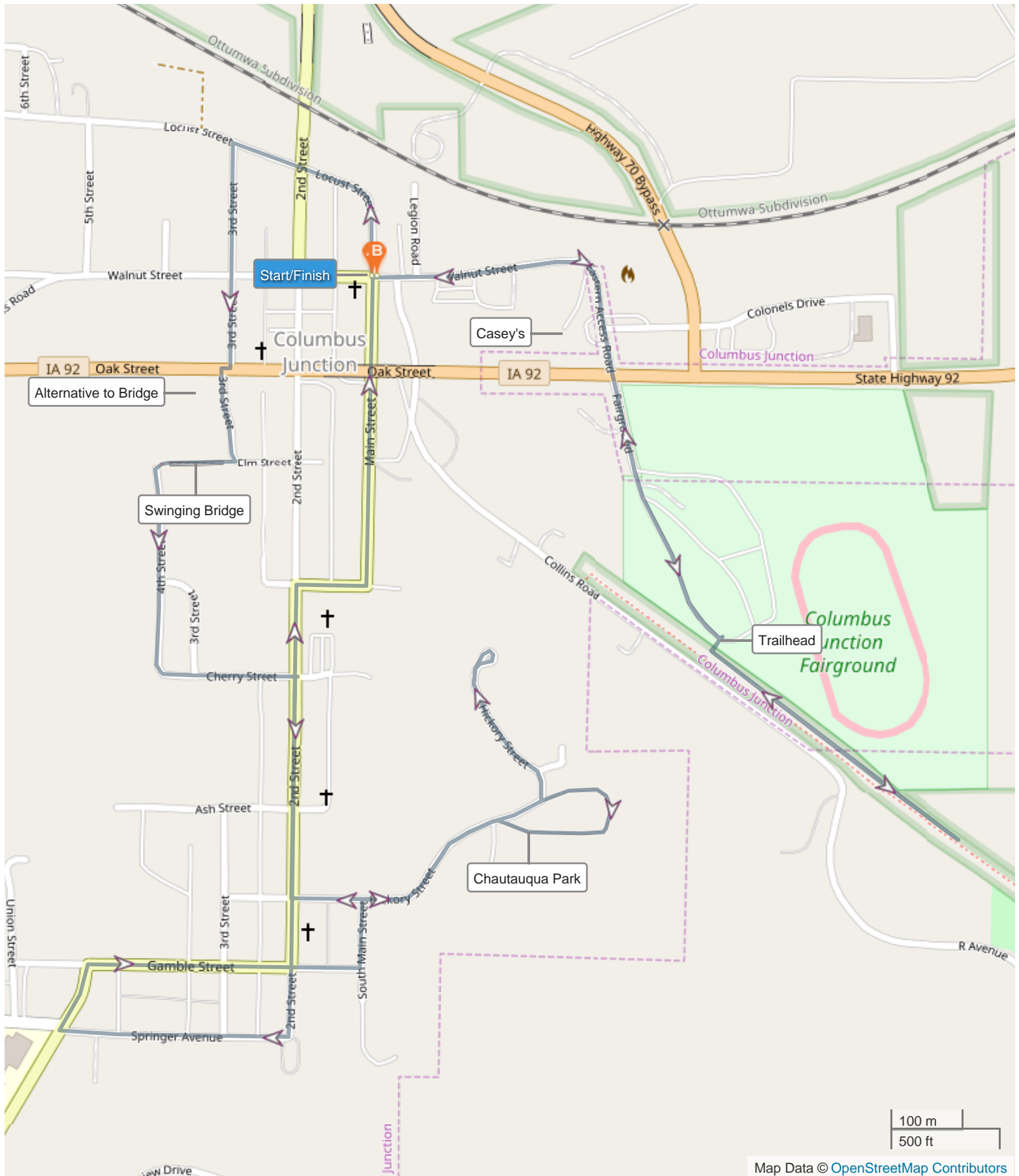
IN CASE OF EMERGENCY: Dial 911

Point of contact for walk-related assistance: Robin Madison, 515-238-4536

These walk directions and maps may only be used in conjunction with a signed American Volkssport athletic waiver. All other uses are prohibited.

© Copyright 2023, Iowa's Walking Club

Columbus Junction - All Routes



100 m
500 ft

Map Data © OpenStreetMap Contributors



Entrance to the Historic Swinging Bridge



Park Drinking Fountain



Trailhead to Hoover Nature Trail