



DeKalb County, DeSoto State Park, Alabama – Gillum Loop Trail 5K, 10 K Walk

AVA Special Programs: Walking the USA A-Z, Par for the Course. Amblin' Through Alabama County Walks

Copyright 2024, Alabama Amblers. This map and directions may only be used in conjunction with a signed American Volkssport Association athletic waiver. All other uses are prohibited. **IN EMERGENCY CALL 911.** For Event Assistance, call Jerry Dunbar 256-617-4187

Continuing in the rustic tradition of the Civilian Conservation Corps (CCC), DeSoto State Park is atop beautiful Lookout Mountain in scenic Northeast Alabama and accented by many rushing waterfalls and local fauna. DeSoto State Park has plenty to do to keep you pleasantly entertained. Kayaking, fishing, swimming, hiking, biking, cycling, rappelling, bouldering, picnicking, wildflower expeditions, and exploring nature. Developed in the late 1930s, the hard-working and dedicated men of the CCC made many natural enhancements to the park.

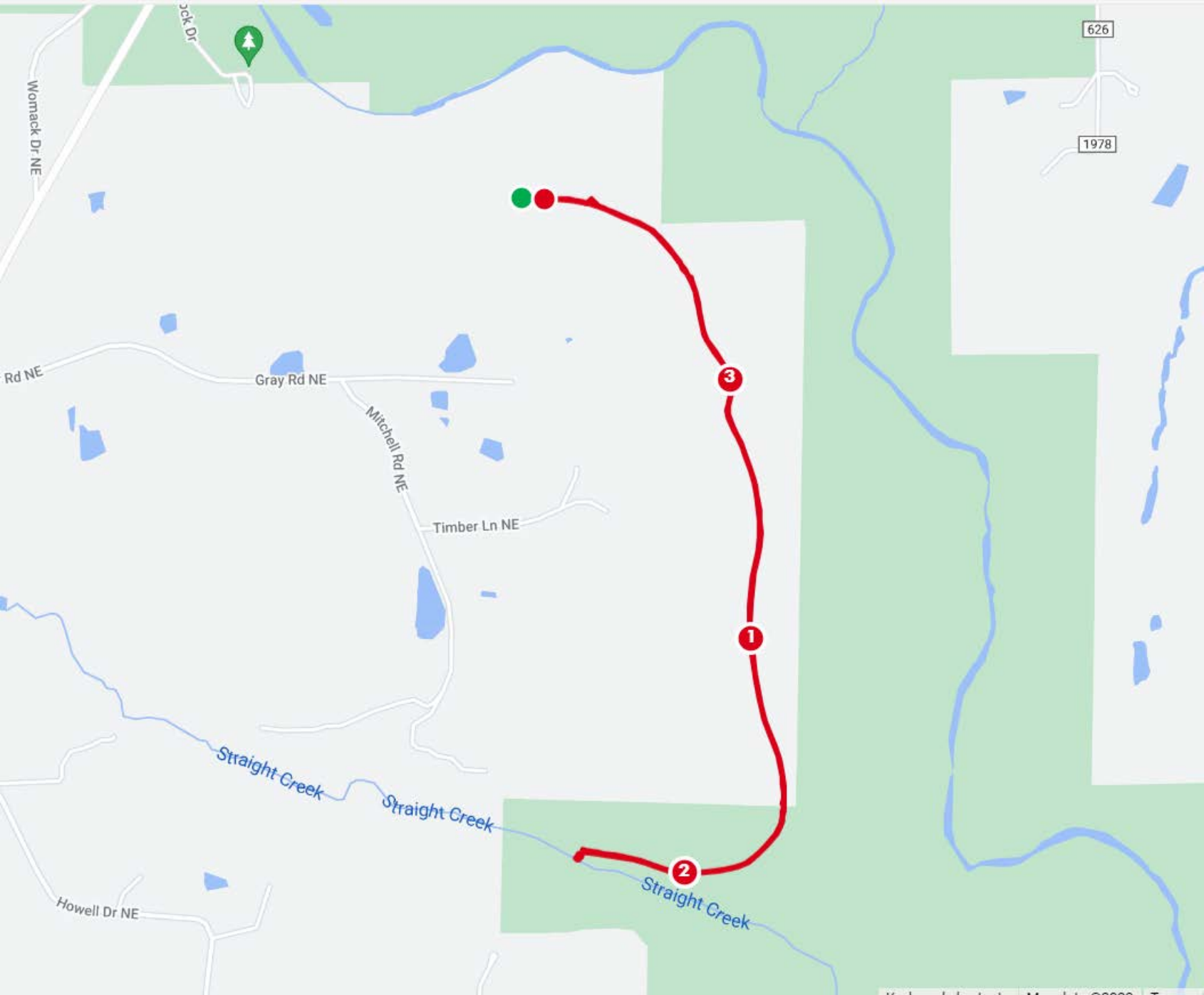
Restrooms at the County Store and the Lodge Lobby. Restaurant located in the Lodge. If you don't want to walk to the Trailhead for the Gilliam Loop, you will add about 1 mile to your walk today. Directions to the Gilliam Loop are the same for driving and walking.

Start: DeSoto State Park, Lodge Lobby, F9RP+97, 1299 Blalock Dr, Fort Payne, AL. If you get to DeSoto Park and can't find the Lodge, there are many signs. Drive towards the Lodge and park your car

1. After turning right on Blalock Dr you will pass the lodge on your left, continue driving/walking for about a half a mile and turn right between cabins 21 and 22 parking in the large open parking lot.

5K walkers – Choose either 5K trail and enjoy your beautiful day. The trail going straight is steep and leads to a historical CCC bridge. If you circle around, the trail is more level. Not level, just MORE level. The steep trail whupped me and I took a few breaks and drank all my water.

10K Walkers – You will utilize both trails. Have fun, you are a beast of a person.



Womack Dr NE

Gray Rd NE

Mitchell Rd NE

Timber Ln NE

Howell Dr NE

Straight Creek

Straight Creek

Straight Creek

626

1978

3

1

2