



# Interlaken Trailblazers welcome you to Winthrop Town Walk 6/10k Rated 2B SRY 3501



**Start at:** Winthrop Town Trailhead, 208 White Ave, Winthrop, WA 98862  
48.472911, -120.17996

**Mapping Apps:** (Apple/Google) Winthrop Ice Rink

**Driving Directions to Winthrop Town Trailhead:** HWY 20 WEST: Continue 8 miles beyond Twisp. After passing the Coldwell Real Estate sign on the left, Look for brown signs on right for Trailhead/Ice Rink. Turn LEFT (White Ave/Twin Lakes Road) In 50 yards turn RIGHT into gravel Trailhead/Ice Rink Parking  
HWY 20 EAST: 13 miles East of Mazama at 4-way stop in Winthrop, TURN RIGHT Continue through town and across a bridge, immediately after the bridge the road curves left. TURN RIGHT onto White Ave/Twin Lakes Road. In 50 Yards turn RIGHT into gravel Trailhead/Ice Rink Parking.



**Restrooms** Down the stairs and turn left to enter the building for restroom.

© 2024 Interlaken Trailblazers Volkssport Club. This map and directions may only be used in conjunction with a signed American Volkssport Association athletic waiver. All other uses are prohibited.

### Special Programs: AVA –

ESVA: On the Road Again, That’s Entertainment



Emergency Dial 911

POC: Katie S, for walk direction information  
aclayjar@gmail.com  
(425)753-1772

Please use either the Online Start Box (OSB) or Physical Start Box (PSB) to register and complete the event. Do NOT mix and match, for example, by registering using the OSB then completing your event using the PSB nor signing the PSB log sheet. The sponsoring club only receives credit for an OSB participation when an OSB registration has been completed online by entering your participation date, distances, and any special programs using the OSB.

**WALK COMPLETION AND CREDIT:** Be sure to log back into the OSB system to finish/complete your online registration after doing the event. The OSB system does not deduct any event fee from a participant's Event Bank until they have submitted event completion info including the date the event was walked, the distance walked, and the selection of applicable special programs that person is participating in. Nevertheless, a fee of \$2 for a downloaded PDF is deducted from the user's Event Bank when the PDF is downloaded. Later, any PDF fees are credited back to a user's Event Bank when he/she submits the event completion info as a paying for credit participant. Note, however, the \$2 coupon for the downloaded PDF will expire in 60 days.



## Event #1 2024 Winthrop Town Walk 10K Rated 2+B

Start: Winthrop Town Trailhead

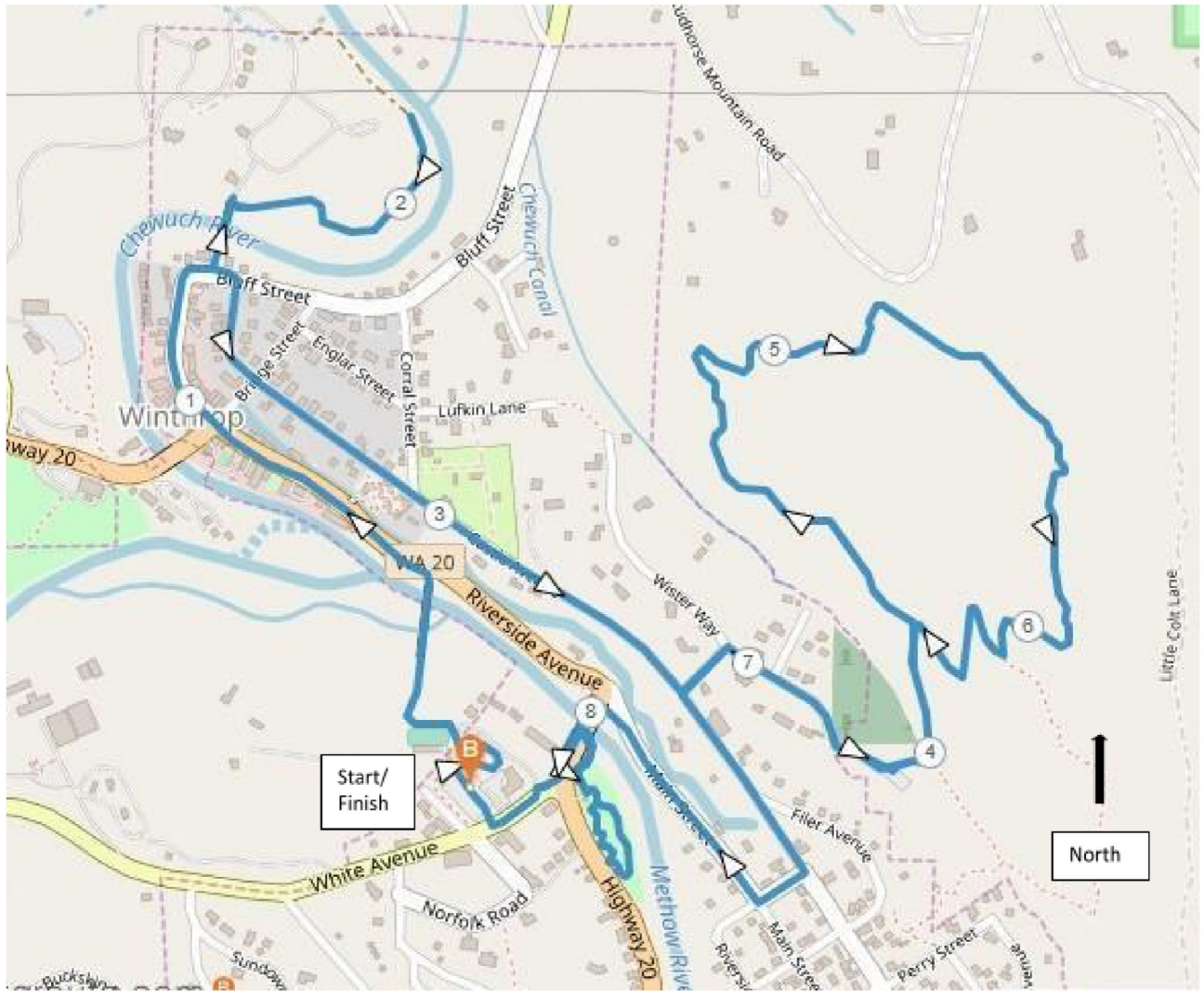
© © 2024 Interlaken Trailblazers Volkssport Club. These directions and maps may be used only by individuals duly registered for this AVA/IVV Sanctioned event. All other uses are prohibited.



IN CASE OF EMERGENCY DIAL: 911  
FOR WALK ASSISTANCE: (425-753-1772) SHARON (206-909-5176)

1. Exit from the Trailhead down the stairs toward the Rink.
2. **LEFT** on the path in front of the Rink as it turns right to head over the suspension bridge.
3. **VEER LEFT** after crossing to continue on the trail then roadside to the boardwalk. Enjoy the shops as you continue through town. (Caution Construction)
4. **STRAIGHT** at 4 way stop. When the boardwalk ends enter parking lot for Chewuch Professional Building.
5. **ANGLE RIGHT** to go through the parking area.
6. **TURN LEFT** before RIVER PINES INN and **CROSS** the bridge over the Chewuch River
7. Make a hard **RIGHT** turn onto Interpretive Trail.
8. Follow trail along river to sign for Sateekh Wa Park. Enjoy the first three interpretive signs, then turn around and go back across the bridge.
9. **TURN LEFT** through parking of River Pines Inn and continue going up the hill to Bluff St.
10. **CAREFULLY CROSS** Bluff Street and proceed on Castle Ave. In 1/2k you will see the Shafer Museum Grounds. Walk distance includes exploring exhibits.
11. **CONTINUE** on Castle Ave to Roses Hill Road
12. **LEFT** on Roses Hill Road to Wister Way
13. **CROSS & RIGHT** on Wister Way which becomes Cemetery road (unmarked).
14. Continue beyond the cemetery **VEER LEFT** at the end of the fence and enter the parking lot (R/R)
15. **VEER LEFT** to the trail which passes between two Methow conservancy signs.
16. **LEFT** at the "T" and continue between 2 more signs.
17. **LEFT** at the "Y"
18. **CONTINUE** as the trail winds uphill and curves right.
19. Stay **STRAIGHT** on main path as it winds downhill and curves right over a distance. (Small sign on left)
20. Just after passing through 2 more signs with their back to you, **CONTINUE STRAIGHT**
21. You will begin to see the parking lot on your left. **LEFT** at the "Y"
22. **RIGHT** at parking lot and continue back to Roses Hill Road
23. **LEFT** on Roses Hill Road to Castle Ave
24. **LEFT** on Castle Ave to Center Street
25. **RIGHT** on Center to Main Street
26. **CROSS & RIGHT** on Main St.
27. When you are approaching the bridge **VEER LEFT** onto the trail.
28. **CONTINUE** to the staircase and climb up to the pedestrian walkway and cross the bridge
29. Just after crossing the bridge make a **U turn** to the **RIGHT** following a trail which will go alongside, then under the bridge.
30. **CONTINUE** downhill into Homestream Park
31. **STRAIGHT** passing the gazebo and entering the trail through the opening in the rail fence
32. At the fish sculpture, **VEER LEFT** and continue clockwise on the park trail.
33. When you get back to the fish sculpture, **VEER LEFT** back to the parking area.
34. Continue through the parking area and rejoin the trail under the bridge back.
35. Continue on the trail back to White Avete Ave.
36. **CONTINUE** 60 Yards to Start/Finish

We hope you enjoyed the walk.





# Event #1 2024 Winthrop Town Walk 6K Rated 2B

Start: Winthrop Town Trailhead

© © 2024 Interlaken Trailblazers Volkssport Club. These directions and maps may be used only by individuals duly registered for this AVA/IVV Sanctioned event. All other uses are prohibited.

IN CASE OF EMERGENCY DIAL: 911  
FOR WALK ASSISTANCE: (425-753-1772) SHARON (206-909-5176)

1. Exit from the Trailhead down the stairs toward the Rink.
  2. **LEFT** on the path in front of the Rink as it turns right to head over the suspension bridge.
  3. **VEER LEFT** after crossing to continue on the trail then roadside to the boardwalk, Enjoy the shops as you continue through town. (Caution Construction)
  4. Straight at 4 way stop When the boardwalk ends enter parking lot for Chewuch Professional Building.
  5. **ANGLE RIGHT** to go through Parking area.
  6. **TURN LEFT** before RIVER PINES INN and **CROSS** the bridge over the Chewuch River
  7. Make a hard **RIGHT** turn onto Interpretive Trail.
  8. Follow trail along river to sign for Sateekh Wa Park. Enjoy the first three interpretive signs, then turn around and go back across the bridge.
  9. **TURN LEFT** going up the hill to Bluff St.
  10. **CAREFULLY CROSS** Bluff Street and proceed on Castle Ave. In 1/2k you will see the Shafer Museum. Distance includes viewing the exhibits.
  11. **CONTINUE** on Castle Ave to Center Street
  12. **RIGHT** on Center to Main Street
  13. Cross & Right on Main
  14. When you are approaching the bridge **VEER LEFT** onto the trail.
  15. **CONTINUE** to the staircase and climb up and cross the bridge on the pedestrian walkway
  16. Just after crossing the bridge make a **U turn** to the **RIGHT** following a trail which will go along side, then under the bridge.
  17. **CONTINUE** downhill into Homestream Park
  18. **STRAIGHT** passing the gazebo and entering the trail through the opening in the rail fence
  19. At the fish sculpture, **VEER LEFT** and continue clockwise on the park trail.
  20. When you get back to the fish sculpture, **VEER LEFT** back to the parking area.
  21. Rejoin the trail under the bridge back to White Ave.
  22. **CONTINUE** 60 Yards to Start/Finish
- We hope you enjoyed the walk.

