



The Double Eagle Hike and Bike
Club Welcomes You to Historic
Bandelier National Monument



County

Los Alamos/Sandoval

AVA Sanctioned Seasonal Event

This walk is composed of 5 and 10km routes and will be available in 2025 only. **Bandelier is a fee park, with a \$25 entry fee per vehicle, unless you are an NPS pass holder.** From 1200's AD to the late 1400's, Ancestral Pueblo people lived and worked in Frijoles Canyon, now encompassed by Bandelier National Monument, established in 1914. Adolf Bandelier was guided to the canyon by Cochiti pueblo members in the 1880's, and along with fellow archeologist Edgar Hewitt directed several excavations evident on the walk. Excavations have now stopped at the request of the neighboring Pueblos, but the structure are preserved and maintained. The 5k walk starts at the visitor center, and walks the Ruins Loop and continues along the canyon floor to Alcove House, a 140' elevated room in the canyon wall, reached by ladders and stairs. The 10K route continues back past the visitor center to the Falls Trail, and out and back to upper falls along Frijoles Creek. Along the way are beautiful tent rocks and spectacular scenery as one approaches the Rio Grande River Canyon.

Logistics and Safety:

During the busy summer/fall season, Bandelier will implement shuttle only access. Estimate at this time is from May through Mid-October. Please check on the official Park website <https://www.nps.gov/band/index.htm> for information before your visit. These shuttles run between 9 and 3 every day, so if you want to access before/after these hours, you can drive in and park. The only exceptions are for those with disabled parking permits issued by a governmental entity. The shuttles depart every ~30 minutes from the **White Rock Visitor Center 115 NM-4, White Rock, NM 87547.**

The park is at approximately 6500' in elevation, so carry plenty of water and wear sunscreen. Cellular services is spotty at best in the park and also along the NM4 once you leave White Rock NM. There are irregular walking surfacing including creek crossings over planks of wood that may be slick. Wear sturdy footwear and it is suggested that walking sticks would be of help. Also note that there are numerous steps and ladders to view impressive parts of the park. Pets are not permitted on the trails on this walk due to the historic nature of this park.

Walk Registration:

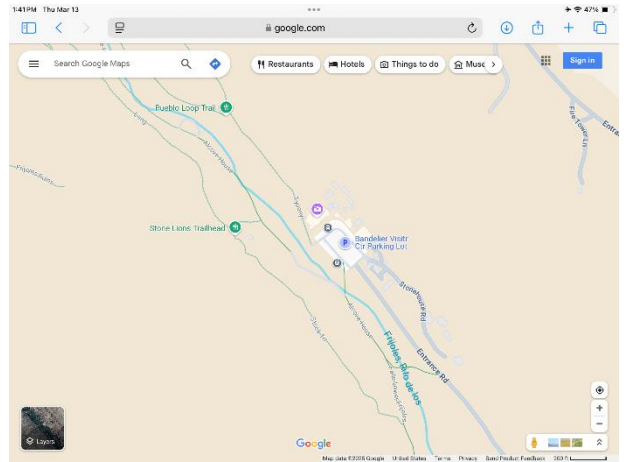
Please use the Online Start Box (OSB) to register. If wishing to do the walk on the way to the events, use the OSB.

Walk Completion and Walk Credit:

Once you have completed the walk, login to your Online Start Box account click on the "My Start Box" tab, then the "Finish Table" tab, then click on "Go to Finish Table" button for the event you have completed. Submit the date and distance of your walk as well as applicable AVA Special Programs to generate stamped "virtual" insert cards.

Driving Directions to Start Point:

The walk starts at the Visitor Center at Bandelier National Monument. From Santa Fe NM and points south, drive north on US84/85 (St. Francis Dr) to Pojoaque NM. Exit to the right onto NM 502 towards Los Alamos. ****Continue approximately 11 miles and exit to the right on NM4 towards White Rock and Bandelier NM. Once you reach White Rock, continue on NM4 approximately 9 miles to the entrance off NM4. From the north (Española NM), follow signs to NM30. Proceed south through Santa Clara Pueblo to the intersection with NM502 and exit right towards Los Alamos. Follow previous directions from ****



Restrooms available at the start at the Visitor Center

Table of Contents:

Use the following table to guide what portion of this document you may wish to print out.

Section Contents	Pages
Introduction, Walk Registration/Completion, Driving Directions, and Table of Contents	1-2
Walk Directions - 5km	3-4
Walk Directions - 10km	5-7

Bandelier National Monument – 5K**Walk starts at the Visitor Center in Frijoles Canyon.**

Event Related Assistance: Sarah Hoover

(505) 470 6041 **REMINDER COMPLETE Walk in OSB for credit**

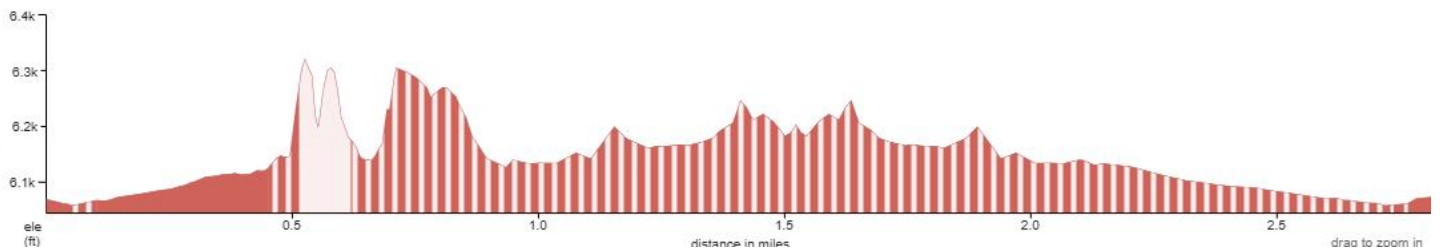
These walk directions and maps may only be used in conjunction with a signed American Volkssport Association athletic waiver. All other uses are prohibited.

1. From the parking lot, enter the historic Civilian Conservation Corps (CCC) constructed Visitor Center. Note that these buildings in Bandelier are the largest collection of CCC buildings within the National Park Service. Visit the small museum before setting out on the Ruins Trail. There are trail maps with interpretive information available for sale in the Visitor Center for a small fee.
2. Continue along the concrete trails to marked location 4, which features the partially excavated kiva. These kivas were sacred spaces used for ceremonial activities. When in use, it would have been covered with a roof of wood and earth.
3. Continue along the trail past the flat areas where residents would have farmed the “three sisters”, corn, squash and beans, which were integral to their diet. At points 6 and 7 along the trail, you will be in Tyuonyi, the largest excavated pueblo structure in Bandelier. At one time these multi story structure would have housed approximately 100 people.
4. Continuing along the trail the smooth concrete surface will end at about marker 10. As you look up towards the canyon wall, you will see cavates in the walls, carved out by the residents with only stone tools. You will continue to follow the trail along the cliff wall with steps and more irregular surfaces.
5. Continuing along the ruins trail past ancestral art and look for carvings in the soft tuff volcanic rock. You will also pass a reconstructed home built in the 1920’s imagining what a cliff dwelling might have looked like.
6. **RIGHT** at marker 17 to continue on the trail towards the Long House. At marker 20, look up the canyon wall above the carved holes to see some petroglyphs with recognizable forms.
7. **LEFT** at the end of the trail descending to the valley floor towards the creek after viewing the Long House.
8. Carefully cross the creek on the wood planks over the creek (previous bridges were washed out due to previous flash flooding from forest fires in the high country).
9. **RIGHT** on the trail towards Alcove House.
10. Upon arrival below Alcove House, views are available along the trail. Should you chose (and if they are open), a series of 4 ladders climb the 140’ up the canyon wall to view Alcove House. **This climb is not recommended for those with heart or respiratory difficulties, or with fear of heights.**
11. Return the way you came back towards the area of the visitor center.
12. At the junction where you crossed the creek, continue straight with the creek on your left. You will often see wildlife along the creek and will pass the historic former dude ranch located in the canyon, the Frey Ranch.
13. Continue past the visitor center on your left through the Cottonwood picnic area.
14. **LEFT** across the bridge towards the main park road, and return to the visitor center exploring the other park buildings towards the visitor, including the park store and restaurant

Taos – 5k



ele surface grade 2.8 mi +328 ft / -322 ft



Bandelier National Monument

5

BANDELIER NATIONAL MONUMENT – 10K

Walk starts at the Visitor Center in Frijoles Canyon.

Event Related Assistance: Sarah Hoover

(505) 470 6041

These walk directions and maps may only be used in conjunction with a signed American Volkssport Association athletic waiver. All other uses are prohibited.

1. From the parking lot, enter the historic Civilian Conservation Corps (CCC) constructed Visitor Center. Note that these buildings in Bandelier are the largest collection of CCC buildings within the National Park Service. Visit the small museum before setting out on the Ruins Trail. There are trail maps with interpretive information available for sale in the Visitor Center for a small fee.
2. Continue along the concrete trails to marked location 4, which features the partially excavated kiva. These kivas were sacred spaces used for ceremonial activities. When in use, it would have been covered with a roof of wood and earth.
3. Continue along the trail past the flat areas where residents would have farmed the “three sisters”, corn, squash and beans, which were integral to their diet. At points 6 and 7 along the trail, you will be in Tyuonyi, the largest excavated pueblo structure in Bandelier. At one time these multi story structure would have housed approximately 100 people.
4. Continuing along the trail the smooth concrete surface will end at about marker 10. As you look up towards the canyon wall, you will see cavates in the walls, carved out by the residents with only stone tools. You will continue to follow the trail along the cliff wall with steps and more irregular surfaces.
5. Continuing along the ruins trail past ancestral art and look for carvings in the soft tuff volcanic rock. You will also pass a reconstructed home built in the 1920’s imagining what a cliff dwelling might have looked like.
6. **RIGHT** at marker 17 to continue on the trail towards the Long House. At marker 20, look up the canyon wall above the carved holes to see some petroglyphs with recognizable forms.
7. **LEFT** at the end of the trail descending to the valley floor towards the creek after viewing the Long House.
8. Carefully cross the creek on the wood planks over the creek (previous bridges were washed out due to previous flash flooding from forest fires in the high country).
9. **RIGHT** on the trail towards Alcove House.
10. Upon arrival below Alcove House, views are available along the trail. Should you choose, (and if they are open), a series of 4 ladders climb the 140’ up the canyon wall to view Alcove House. **This climb is not recommended for those with heart or respiratory difficulties, or with fear of heights.**
11. Return the way you came back towards the area of the visitor center.
12. At the junction where you crossed the creek, continue straight with the creek on your left. You will often see wildlife along the creek and will pass the historic former dude ranch located in the canyon, the Frey Ranch.
13. Continue past the visitor center on your left through the Cottonwood picnic area.

Bandelier National Monument

6

14. Continue on trail past the bridge to the main road on your left.

15. Follow the signs to the Falls Trail to your right. You will follow the trail to the Upper Falls of Frijoles Creek only. Flash floods have taken out the trail below that location all the way to the Rio Grande, and the trail will not be repaired.

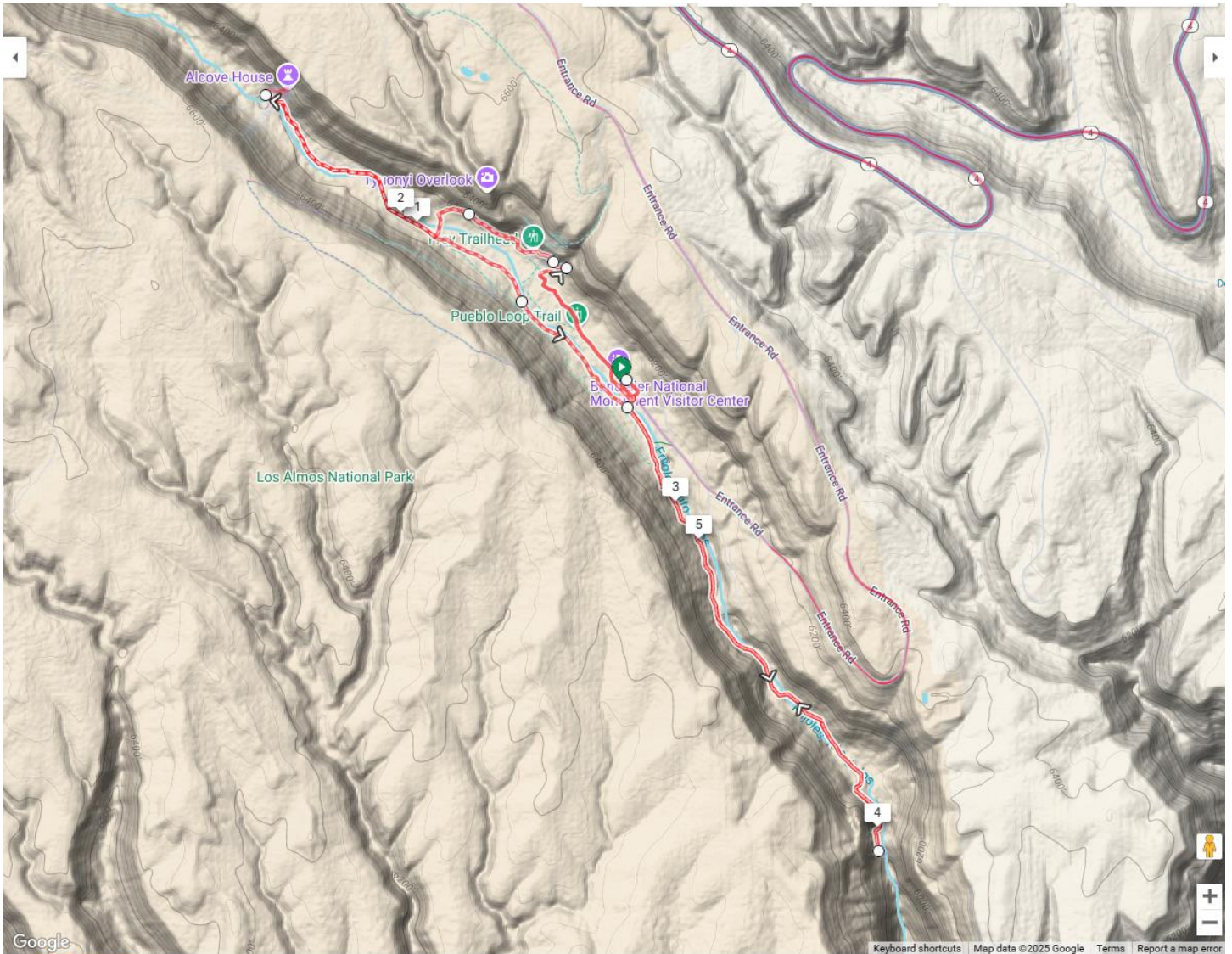
16. Continue along the trail passing the unique geologic feature of the tent rocks to the Upper Falls.

17. Turn around at the Upper Falls, and return to the beginning of the Falls trail. Return to the location of the bridge crossing the creek to the visitor center district.

18. **RIGHT** to cross the bridge towards the main park road and return to the Visitor Center exploring the other park buildings including the park store and restaurant.

REMINDER: Please remember to complete your OSB for credit at the conclusion of the walk.

Taos – 10k



ele surface grade 5.5 mi +595 ft / -590 ft

