



**Glenwood Iowa**  
**TRAIL RATED 1A - 5K**  
**2A - 8 & 11K ROUTES**  
 © Nebraska Wander Freunde  
 Trailblazers 1/1/25  
**SPECIAL PROGRAMS: City Hall,**  
**Par for the Course, Step to**  
**the Beat, Walk with the**  
**Wild Things, Walking with**  
**America's Veterans**



See all this small town has to offer from the arts, history and some of the best sweets this side of the Missouri River. Join us for a three county weekend in June. The walk traverses some of the city's cross country trails and passes the Coddington Barn and historic farm buildings, and the Mills County Museum. You will pass the County Courthouse/City Square. Take a visit to Glenwood's Sugar Makery-great ice cream and homemade candy!

**Walk Registration:**

Registration takes place online using the AVA Online Start Box, on my.ava.org. Follow the instructions provided to create a user account and sign the AVA waiver (one time). Instructions for payment are also included. Download the directions and print as needed. The POC does not provide event directions or accept alternate payment methods.

**Walk Completion and Walk Credit:**

Once you have physically completed the walk, please login to your Online Start Box account click on the "My Start Box" tab, then the "Finish Table" tab, then click on "Go to Finish Table" button for the event you have completed. Use the displayed entry form to submit the date and distance of your walk as well as select applicable AVA Special Programs to generate stamped "virtual" insert cards that you may choose to print out.

**Table of Contents:**

Use the following table to guide what portion of this document you may wish to print out.

<b>Section Contents</b>	<b>Pages</b>
Introduction, Walk Registration/Completion, and Table of Contents	1
Driving Directions, Notes	2
5 & 8K Directions and Map	3-5

**Starting Point Location:**

41.046996, -95.733087  
Glenwood Lake Park  
100 Lake Dr, Glenwood, IA 51534  
Park near the Mills County Museum


**Driving directions**

**From the north or south:** Take I-29 to exit 35A/Glenwood/US275/US34. East on US 275 to Exit 8, Glenwood/L35. North on L35/Locust St. to Sharp St. Right (east) on Sharp St. to Park entrance on your right.

**Restrooms:**

Restrooms available in Glenwood Lake Park, Glenwood Public Library at 109 Vine St. and on the 11 K at the Phillips gas station on Ebaugh St.

**Emergency Numbers:**

	In case of Emergency: Dial 911 Event related assistance: Sandy Spaulding 712-435-0815
--	---

**Notes on the Directions**

- Streets north of Sharp St. are numbered. All other streets are named.
- Many streets do not have sidewalks. Always walk facing traffic and beware of traffic.

In addition to the seasonal event available on the OSB only, the Nebraska Trailblazers will cohost this walk during a three-county weekend with Iowa's Walking Club in June.

**Other information:**

The 5 & 8K is on city sidewalks. If preferred, the 5 K can be done twice to equal 10 K, or the 8 K can be done plus visiting all of the areas of the museum to add another 2 km.

**Mills County Museum**

Well worth seeing. Open Thursday & Friday 10-2, Saturday 10-4 and Sunday 1-4. Closed Monday-Wednesday.

**Special Programs:**

**City Hall**

City Hall located at Sharp & Vine St.

**Par for the Course**

Playground in Glenwood Lake Park,  
Disk golf course on the 10 K

**Step to the Beat**

Davies Amphitheater in Glenwood Lake Park

**Walking with the Wild Things**

Home with multiple gargoyles at 609 Vine St.

**Walking with America's Veterans**

World War II Veteran Memorial in city square

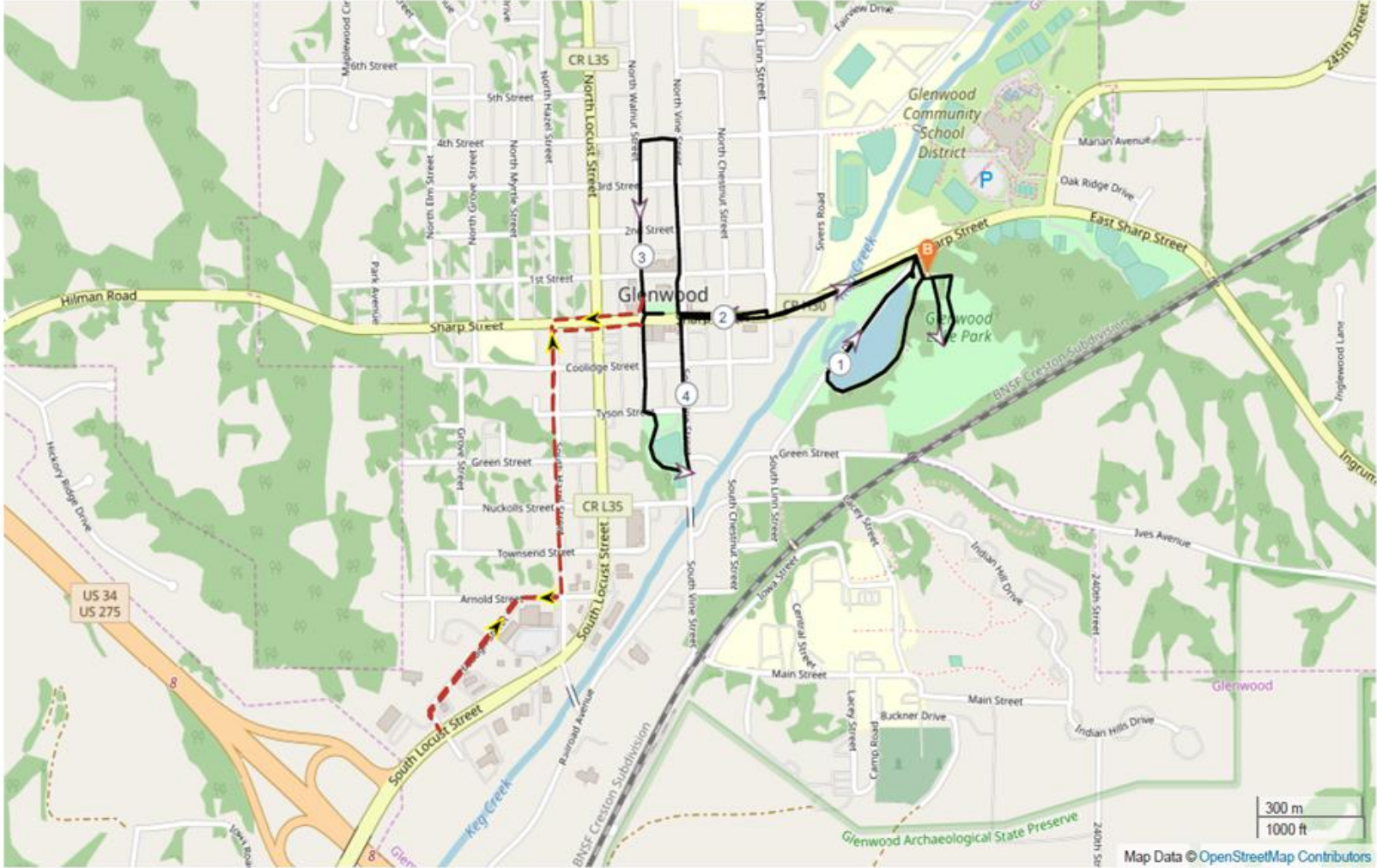
# 5k & 8k Directions

1. From the parking lot, go to the Mills County Museum. If it is open, enjoy some great exhibits.
  2. From the museum, go to the sidewalk in front of the restrooms. Left (s) on the sidewalk passing the playground on the right-**Par for the Course**.
  3. At the Davies Amphitheater-**Step to the Beat**, turn left and go up the steps.
  4. Cross the grass between the evergreen trees, to top of first knoll and turn left on the grass path/drive toward the large red building, staying to the right of the building walking between the outhouse and the white schoolhouse. Note the jail and farm equipment past the outhouse.
  5. Turn left (w) on the sidewalk at the outhouse and follow it along the white cinder block building (back of the museum), passing the red Coddington Barn on right (built in 1905) and white picnic shelter on left, toward the red gates.
  6. At the red gates, turn left, crossing the parking lot toward the flag pole and lake.
  7. At the end of the parking lot, cross the grass to the sidewalk along the lake.
  8. Turn left (s) on the sidewalk and follow most of the way around the lake.
  9. On the north end of the lake, passing the large rock, cross the grass to the road. Turn left (n) on the park road to Sharp St.
  10. Turn left (w) on Sharp St., crossing the bridge over Keg Creek to Vine St. Keg Creek acquired its name from bootleggers who rolled barrels of whiskey into the creek to hide them from liquor control agents during Prohibition.
  11. Cross Vine St. and turn left (s) to entrance to City Field Park (not marked) just before the pickleball courts. (Portapotty may be available near the PB courts.) The road will wind past the ball diamond to Tyson St. (not marked).
  12. At Tyson St., turn left (w) a short distance to Walnut St.
  13. Right (n) on Walnut St. to Sharp St. Cross Sharp St.
  14. Turn right on Sharp St. and walk a very short distance east to view WWI/WWII monument on courthouse grounds. **Walking with America's Veterans**-in town square. After viewing monument, turn around and return short distance to Walnut St.
- The next 2.5 Km are an out and back to a convenience store with restrooms. If you prefer to skip this part and do only the 5k trail, cross Sharp St. and proceed to number 23.**
15. Continue (w) on Sharp St. to Hazel St.
  16. Left (s) on Hazel St. to Arnold St.
  17. Right (w) on Arnold St. to Ebaugh St.
  18. Left (sw) on Ebaugh St. to service road leading to Phillips 66 gas station. (Food and restrooms available).

19. Return to Ebaugh St. and turn right (ne) to Arnold St.
20. Right (e) on Arnold St. to Hazel St.
21. Left (n) on Hazel St. to Sharp St.
22. Right on Sharp St. to Walnut.
23. Left (n) on Walnut St. to 4<sup>th</sup> St.  
Note the National Test site for Earthkind Roses around the clock tower in the town square. The Historic Grace Methodist Church at 2<sup>nd</sup> and Walnut was built in 1905.
24. Right (e) on 4<sup>th</sup> St. to Vine St.  
Cross Vine. (If you are working on the **Walking with the Wild Things**, you can turn left to 609 Vine St.-Lots of wild things on the property! After viewing, turn around and return south on Vine to return to the 5 K trail.)
25. Right (s) on Vine St. to Sharp St.  
At 3<sup>rd</sup> and Vine, note the former First Baptist Church, built in 1909 on the southwest corner. Carnegie Library at 109 N. Vine, (Restrooms available if open) is one of 1,689 libraries in the United States built with funds from the Carnegie Foundation and one of only 48 still in use. It was built in 1907 for \$7,000. At Vine and Sharp, note the post office name-named by Act of Congress for a WWII Vet and Mills County farmer.
26. Left (e) on Sharp St. to Sivers Rd.  
Note **City Hall** with its lovely mural. You will pass Sugar Makery, a locally owned sweet shop with yummy goodies.
27. After passing Sugar Makery, continue east walking on the grass (the YMCA will be on your left) to and cross Sivers Rd.
28. **Carefully** cross Sharp St. at Sivers Rd., and turn left crossing Rivel Bridge (**Walking with America's Veterans**) over Keg Creek to continue east on Sharp St.
29. After crossing bridge continue east crossing Lake Dr. and turn right, returning to park to finish. Note the historical marker on the left. The park was dedicated to John Sivers, early pioneer who owned the grist mill on this site.

**Mills County Walk, Glenwood, Iowa – 5 & 8K  
START POINT – Glenwood Lake Park  
41.046996, -95.733087**

Glenwood 5 & 8 K 2025



*These walk directions and maps may only be used in conjunction with a signed American Volkssport Association Athletic Waiver. All other uses are prohibited.*