



# Mantorville 5 km Walks



*Two walk options, both start and finish  
at Riverside Park, 301 N Main St*

<b>Table of Contents</b>	<b>Page</b>
Walk Details	1
5 km Historic Town Walk Directions	2-3
5 km Trail and Cemetery Directions	4
Mantorville Walks Map	5

SANCTION #: SN128883 - 2026 / Y3613

EVENT TYPE: Seasonal Walk

DATES: Wed, April 1st until Wed, September 30th, 2026

TIMES: Dawn to dusk

DISTANCE: 1A

CONTACT: Bonnie Johnson, bonjon@comcast.net, (763) 229-3584

COUNTY: Dodge County

SPECIAL PR: Centurion Achievement Challenge; IVV-Americas; Par-For-The-Course; Walking the United States - States; Walking the USA, A - Z

AWARD: IVV CREDIT ONLY

IMPORTANT EVENT INFORMATION:

Restrooms: Yes, Pets: Yes, Strollers: Medium, Wheelchairs: Medium

This event is hosted on the Online Start Box (OSB). The detailed location of, and driving directions to, the event starting point are included in the event directions, downloaded from the Online Start Box (OSB). The POC does not provide event directions nor accept alternate payment methods.

COMMENTS: Twelve blocks of downtown Mantorville are on the National Register of Historic Places. Walk on city streets, sidewalks and in parks. Dine at the famous Hubbell House (1854) once a stagecoach stop. See the Mantorville Stone buildings such as the 1871 Dodge County Courthouse. The Zumbro River also features a covered bridge and cemetery along the route. Mantorville is known as the Marigold Capitol where you will note marigolds planted everywhere.



# Mantorville 5 km Walks

*Two walk options, both start and finish at Riverside Park,  
301 N Main St*

*Copyright 2026 by Twin Cities Volkssport*



## 5 km Historic Town Walk

1. With Main St on your left, follow the Gaylord Harris Memorial Walkway towards the Zumbro River. Follow the path under the bridge, curve left and follow the path behind Casey's.
2. You will come out on 4th St at Stussy RV Park. Follow the road with the RV Park on your left
3. **Turn Right** at the T onto 5<sup>th</sup> St (no sign)
4. Walk on the sidewalk and pass Bluff St. Looking right you can view the limestone ruins of the old Mantorville Brewery (1857-1939)
5. **Turn Around** and return the way you came on 5<sup>th</sup> St staying on the left side of 5<sup>th</sup> St. You will pass the City Offices and fire station. Stop in at the Chocolate Shop on the corner at Main St
6. **Right** at Main St crossing 5th St passing the Hubbell House Restaurant. (built of limestone in 1856 and once a stagecoach stop between the MS River and St Peter, serving the likes of Ulysses S Grant, Horace Greeley & W. W.
7. **Continue** on Main St taking note of the other old retail buildings. At the end of the block is the 1858 Restoration House. Its basement contains the only jail cell in Dodge County
8. **Right** onto the boardwalk at the corner and follow the trail around the restroom building and walk on the gravel path to the mid 1800's Old Log House
9. **Follow the Boardwalk** to the front door, **Turn Left** and climb the steep bank to the road. Across the street is the Dodge County Courthouse.
10. **Cross 6th St and Turn Right.**
11. **Left** on Blanch St
12. **Right** on 7<sup>th</sup> St and follow it as it curves left and becomes East St.
13. **Left** on 8th St to Blanch St
14. **Right** on Blanch St as it curves left into 9<sup>th</sup> St
15. **Carefully Cross** Main St
16. **Left** on Jefferson (no sign) and continue on Jefferson past the ball field
17. **Left** on 7<sup>th</sup> St



**AMERICA'S  
WALKING CLUB**  
— ESTABLISHED 1976 —

# Mantorville 5 km Walks

*Two walk options, both start and finish at Riverside Park,  
301 N Main St*

*Copyright 2026 by Twin Cities Volkssport*



18. **Right** on Main St, passing the Chamber of Commerce, the VFW (Veterans), and Saloon
19. **Cross** 5<sup>th</sup> St and turn **Right**. Notice the 1918 Opera House (Step to the Beat), antique shop. Check for gnome displayed on shelf or in window (Walk on the Wild Side)
20. **Cross** Clay St and immediately turn **Right** to Cross 5<sup>th</sup> St. **Continue** on Clay St (notice the large home on the left with curved porches. This “Grand Old Mansion” was formerly the Teunis Slingerland home, built in 1899
21. **Right** on 6th St for 1/2 block to the alley and **Turn Left**. Walk by an outhouse, old schoolhouse & museum on right.
22. **Left** on 7<sup>th</sup> St
23. **Left** on West St
24. **Right** on 5th St, passing the playground and Slingerland Park
25. **Left** on Walnut St
26. **Left** on 4<sup>th</sup> St (note the large double house on the left and the old barn in back)
27. **Left** on West St (note unique house at 407 West St)
28. **Right** on 5<sup>th</sup> St to the alley.
29. **Right** down alley to the short limestone rock wall.
30. **Left** at the rock wall and walk on grass past the carriage house to Clay St.
31. **Right** on Clay St, past the Severance house at 401 Clay St
32. **Continue** on Clay St passing Riverside Park on the left with Restrooms and many marigolds in the summer and fall months.
33. At the end of the street, continue on gravel, angling right toward the covered bridge
34. **Cross** over the covered bridge and check out the Zumbro River and what used to be Goat Island. It is now a peninsula.
35. **Return** over the covered bridge back to the start point



# Mantorville 5 km Walks

*Two walk options, both start and finish at Riverside Park,  
301 N Main St*

*Copyright 2026 by Twin Cities Volkssport*



## 5 km Trail and Cemetery Walk

1. Leaving the parking lot, go under the bridge, curve **Left** with Hwy 57 on your left and **Take a Sharp Left** onto Hwy 57 and cross the bridge. Stay on the left side of the bridge.
2. Immediately after crossing the bridge, **Take the Path Straight Ahead** which becomes the Sunset Trail (Rails to Trails)
3. **Cross** Cemetery Rd at the trail crossing sign as the trail veers to the right. A short distance later is a bench on the left as you curve on the trail to the left.
4. **Continue** on the trail paralleling the road past the golf course (Par for the Course) until you come to the stop sign at 251 Ave. **Turn Around**. On your right note the wooden Estates sign.
5. **Follow the Trail** back to Cemetery Rd.
6. **Right** at the trail crossing sign walking up the road to Evergreen Cemetery.
7. Enter the Cemetery and turn **Left** at the first road (you will note the limestone water tower at the intersection)
8. **Right** at the T toward the fence line.
9. **Left** at the fence line following the road around the perimeter of the cemetery back to the entrance.
10. **Right** at the entrance. Notice the smaller cemetery to the right as you walk back on the road to get back on the trail at the crossing sign.
11. **Right** on the trail the way you came and cross the bridge
12. **Left** at 4<sup>th</sup> St returning to the start point



In case of Emergency: Dial 911  
Event related assistance:  
Bonnie Johnson POC: 763-229-3584  
Wayne Heath: Club President 651-249-8886  
Ken Johnson RD: (651) 774-9607

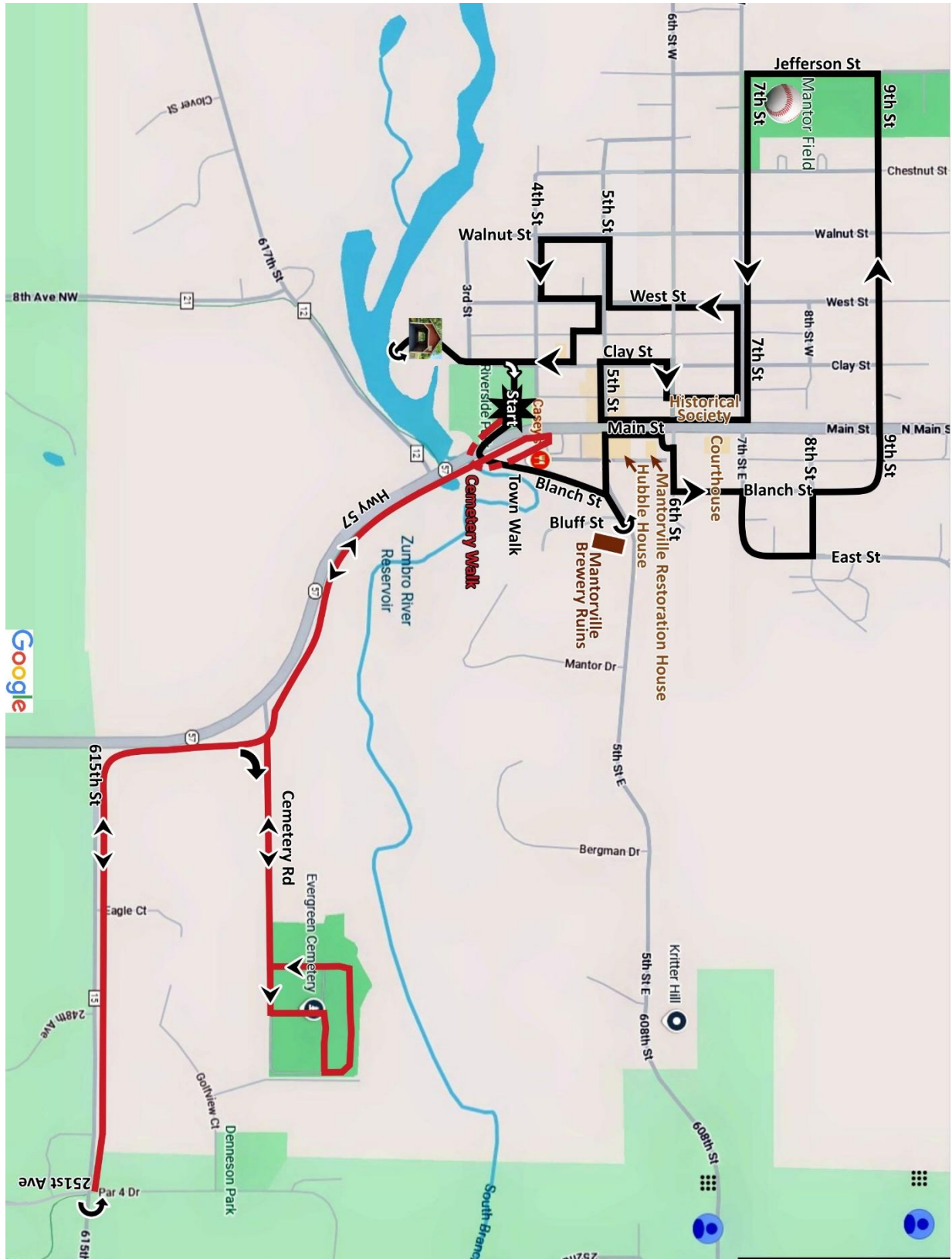


**AMERICA'S  
WALKING CLUB**  
ESTABLISHED 1976

# Mantorville 5 km Walks

Two walk options, both start and finish at Riverside Park,  
301 N Main St

Copyright 2026 by Twin Cities Volkssport



These walk directions and maps may only be used in conjunction with a signed American Volkssport Association athletic waiver. All other uses are prohibited.