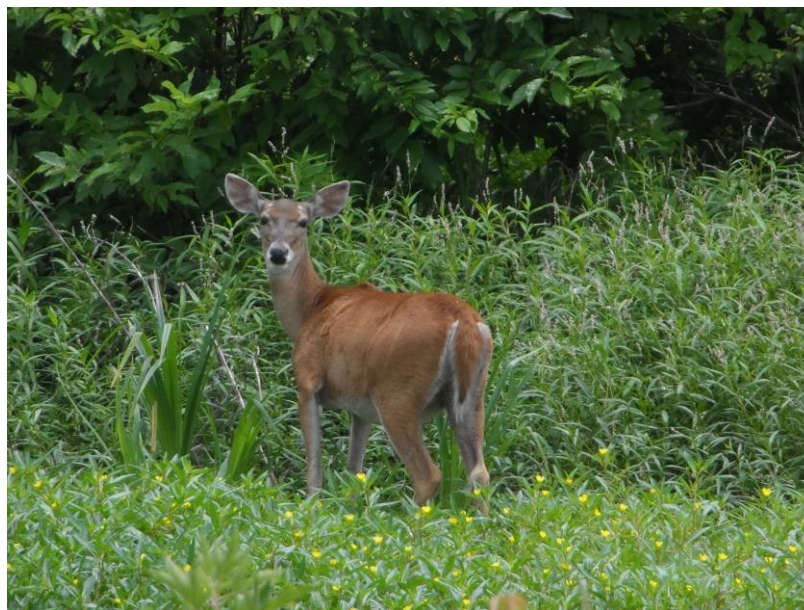


## EAST TEXAS TREKKERS AVA-0863



**DIRECTIONS: Mineola Nature Preserve** – 1860 County Rd 2724, Mineola. From Tyler, take US-69 north thru Lindale toward Mineola. As you approach Mineola, look for signs for the Nature Preserve. Take Loop-564 east to County Road 2724, then veer right to the entrance to the Mineola Nature Preserve. County Road 2724 is about 3 miles south of Mineola.

**In the event of heavy rains the week before the event**, the walk will be moved to downtown Mineola. Start point will be at the Amtrak Train Station at 115 W Front St. Continue north to downtown Mineola. Station is just before the railroad tracks on the west side of US-69.

**Start time:** 9:00 to noon, finish by 3:00

**Walk Description:** Hike the nature trails at the Mineola Nature Preserve along old railroad lines down to the Sabine River and around. Watch for deer, birds, alligators, and other wildlife. Bring a picnic lunch to enjoy afterward. Restrooms available at the start.

**Questions:** Helen Hull, [helenthehun@yahoo.com](mailto:helenthehun@yahoo.com) – 972-530-1026

Visit the East Texas Trekkers website for more information about our club, [www.WalkTx.org/EastTexasTrekkers](http://www.WalkTx.org/EastTexasTrekkers).

## MINEOLA NATURE PRESERV WOOD COUNTY

**November 20, 2021  
10K/6K**

