

**Instructions for  
Depoe Bay – 3 Loops by the Sea, Y-0330  
Depoe Bay, Oregon  
5/10 Km, rated 2B**

**Walk Start Location:** Gracie's 58 N Highway 101 Depoe Bay, OR GPS Coords: 44.81076  
-124.6227

**Driving Directions:** Highway 101 from North or South.

**Park :** You can park along the seawall.

**Restrooms:** From the North available at D River Wayside & Boiler Bay viewpoint. From the South available at Agate Beach wayside & Ottor Rock wayside.

“This map and direction may only be used in conjunction with a signed American Volkssport athletic waiver. All other uses are prohibited.”

Copyright 2020, Willamette Wanders of Salem & Keizer, OR Applies to all directions and maps. **WALK COMPLETION AND CREDIT:** Be sure to log back into the OSB system to finish/complete your online registration after doing the event. The OSB system does not deduct any event fee from a participant's Event Bank until they have submitted event completion info including the date the event was walked, the distance walked, and the selection of applicable special programs that person is participating in. Nevertheless, a fee of \$2 for a downloaded PDF is deducted from the user's Event Bank when the PDF is downloaded. Later, any PDF fees are credited back to a user's Event Bank when he/she submits the event completion info as a paying for credit participant. Note, however, the \$2 coupon for the downloaded PDF will expire in 60 days.

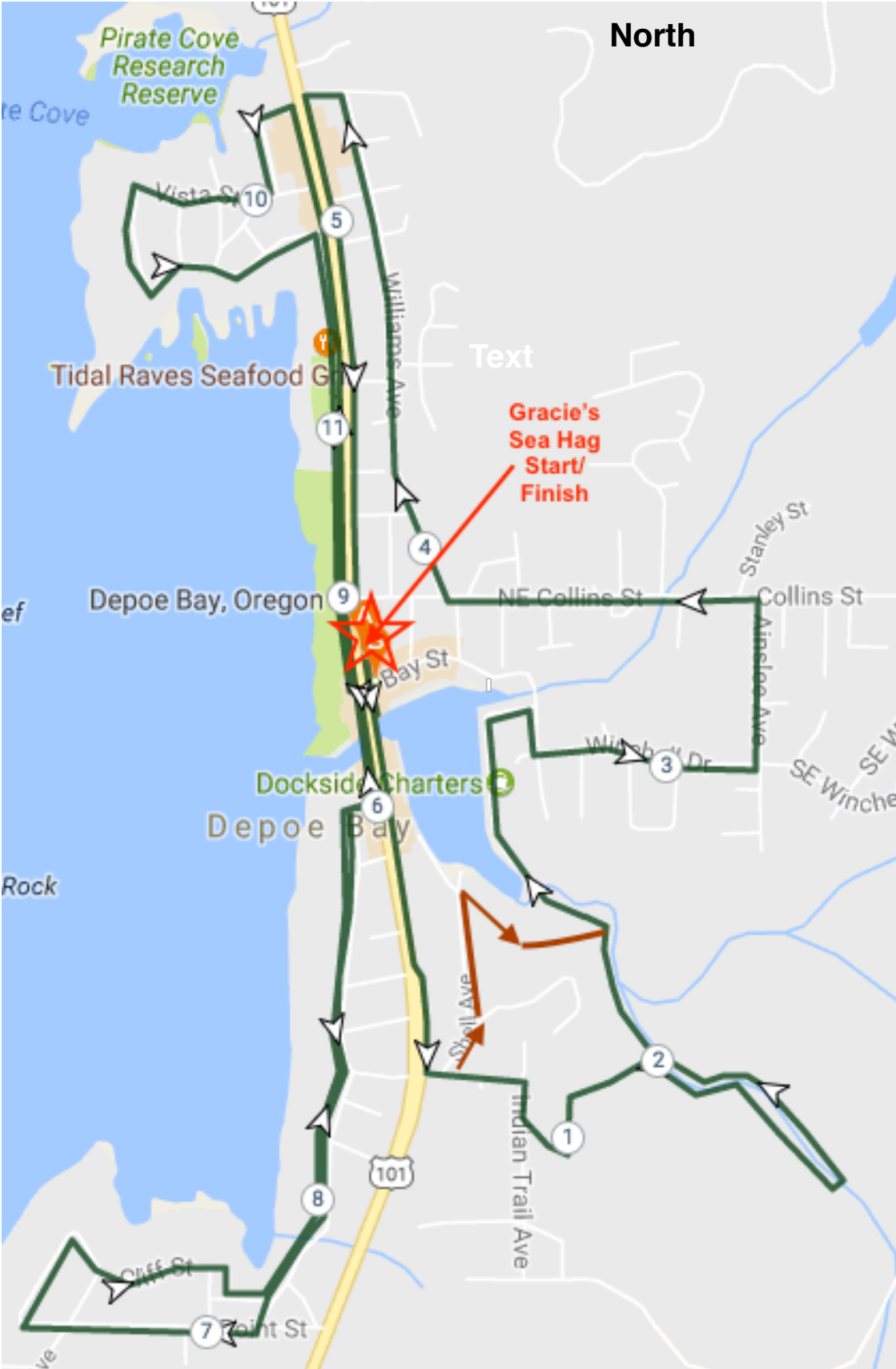
“Please use either the Online Start Box (OSB) or Physical Start Box (PSB) to register and complete the event. Do NOT mix and match, for example, by registering using the OSB then completing your event using the PSB nor signing the PSB log sheet. The sponsoring club only receives credit for an OSB participation when an OSB registration has been completed online by entering your participation date, distances, and any special programs using the OSB.”

**Depoe Bay – 3 Loop by the Sea Walk YRE #330 – 10km/5KM Rated 2B**  
**Willamette Wanderers, Salem/Keizer OR ©2021**  
**AVA & OREGON CHALLENGES ARE LISTED ON CHALLENGES TABLE**  
**Emergency: 911; POC: Lin Crimshaw 503-585-9837**

- |  |   |
|--|---|
| <p>1 <b>Exit</b> Sea Hag <b>Left</b> to Schoolhouse St.<br/> <b>Left</b> on Schoolhouse St. to Shell St (first left) Next trail section is steep and rated 2C.<br/> For an easier walk follow instructions in box.</p> | <p>boats navigating a very treacherous bay entrance.)</p>   |
| <p>2 2B route: Left on Shell St. to harbor parking lot. Right along edge of parking lot to forest path. Continue with #6.</p>  | <p>23 <b>Right</b> up steps on far side, emerging at Whale Watching Center</p>  |
| <p>3 <b>Continue</b> on Schoolhouse St to Indian Trail Street</p>  | <p>24 <b>Right</b> up stairs</p>  |
| <p>4 <b>Right</b> on Indian Trail to trail head on left (short distance). Watch carefully for trail sign facing away on left.</p>  | <p>25 <b>Right</b> on Hwy 101 to Ellingson</p>  |
| <p>5 <b>Left</b> down trail to forest path</p>   | <p>26 <b>Right</b> on Ellingson to SW Coast Dr. 27.</p>   |
| <p>6 <b>Right</b> on path past bridge on left to end at second bridge</p>  | <p>27 <b>Left</b> on SW Coast Dr. to South Point</p>  |
| <p>7 <b>Left</b> across bridge</p>   | <p>28 <b>Right</b> on South Point St to Point St (no sign)</p>  |
| <p>8 <b>Left</b> on path (staying left to next bridge)</p>   | <p>29 <b>Right</b> on Point to Cliff St</p>   |
| <p>9 <b>Left</b> across bridge</p>   | <p>30 <b>Right</b> on Cliff St to Manzanita</p>   |
| <p>10 <b>Right</b> on path to grassy area</p>  | <p>31 <b>Right</b> on Manzanita to Crescent St</p>  |
| <p>11 <b>Slight Right</b> to foot bridge</p>   | <p>32 <b>Left</b> on Crescent to SW Coast Dr.</p>   |
| <p>12 <b>Cross</b> footbridge</p>  | <p>33 <b>Left</b> on SW Coast Dr</p>  |
| <p>13 <b>Continue</b> on path to the World's Smallest Harbor parking lot.</p>  | <p>34 <b>Right</b> on Ellingson to Hwy 101</p>  |
| <p>14 <b>Continue</b> on right side of parking lot to Bayview Ave.</p>   | <p>35 <b>Left</b> on Hwy 101 to the traffic light.</p>  |
| <p>15 <b>Right</b> on Bayview Ave, to Winchell St.</p>   | <p><b>Loop #3 2.7 K, rated 2B</b></p>   |
| <p>16 <b>Left</b> on Winchell St. to stop sign at four-way intersection at Winchell and Ainslee Ave. (no sign)</p>   | <p>36 <b>Continue</b> along seawall to Harney St. You can get wet along here in high surf conditions!!</p>  |
| <p>17 <b>Left</b> on Ainslee Ave. to Collins St. (first left-t-intersection no sign)</p>   | <p>37 <b>Left</b> on Harney St. to Spencer.</p>   |
| <p>18 <b>Left</b> on Collins St. to NE Williams Ave.</p>   | <p>38 <b>Left</b> on Spencer to Vista.</p>  |
| <p>19 <b>Right</b> on NE Williams Ave. to Hwy 101 (Williams becomes Lane St.)</p>  | <p>39 <b>Right</b> on Vista which curves into Alsea Ave. (NS)</p>   |
| <p>20 <b>Left</b> on Hwy. 101 past Sea Hag to the traffic light at Bay Street. (5K)<br/> Loop #2</p>   | <p>40 <b>Follow</b> Alsea Ave. to Sunset or take alternate Depoe Bay Scenic View Area trail around point and back to Sunset. (Trail may be muddy during wet weather.)</p> |
| <p>21 <b>Cross</b> Bay Street at traffic light and continue on Hwy 101 to bridge undercrossing</p>   | <p>41 <b>Left</b> on Sunset back to Hwy. 101</p>  |
| <p>22 <b>Descend</b> steps and turn under bridge (This is a wonderful place to observe the</p>   | <p>42 <b>Right</b> on Hwy. 101 to the traffic light.</p>  |
|  | <p>43 <b>Cross</b> Hwy 101 then <b>Left</b> to the Sea Hag and finish</p>   |

2021 DEPOE BAY-3 Loops by the Sea —10K/5K Rated 2B YRE 0330

This map and directions may only be used in conjunction with a signed American Volkssport Association athletic waiver. All other uses are prohibited.



## AVA & OTSVA Challenges Table

2021 CHALLENGES	Depoe Bay 10K
ICE CREAM PARLORS	
LITTLE FREE LIBRARY	
MAYFLOWER 400 ANNIVERSARY	
ROCKIN' AROUND THE CLOCK	
WALKING WITH AMERICA'S VETERANS	
2020 OTSVA CHALLENGES	
GALLERY	
GARDENS	
GARGOYLE/GNOME	
GAZEBO	
IMAGES (CAMERA, COPY SHOPS)	
INK (TATTOO SHOPS)	
IRISH	
ITALIAN	
JUSTICE (COURTS LAWYERS, Etc)	
JAPANESE	
JEWELRY	
JAVA	Pirate Coffee Company Coast Hwy & Vista
OCEAN	Along loops 2&3
ORCHARDS	
OUTLETS	
OVERLOOKS	Along loops 2&3
PALM TREES	
PARKS	Depoe Bay City Park
PEDESTRIAN BRIDGES	On Depoe Bay Park Trail
PLAYGROUND STRUCTURES	
QUAD	
QUALITY	
QUEEN	
QUILT SHOPS	
SALONS/SPAS	
SKATE PARKS	
STATUES	
SIMMING POOLS	
TOMBSTONES	
TOTEMS	
TRAILS	Depoe Bay Park Trail
TRIALS	
UNIQUE	Depoe Bay smallest bay in the World
UNIVERSITY	
URGENT CARE	
USED	