



WALKING WINLOCK YRE# 791

Distance: 10K, 5K
Difficulty Rating: 2A

Winlock is the first incorporated city in Lewis County. Visit this historic town once a major player in the railroad and egg industry. Walk by historic homes and repurposed buildings. See the world's largest egg and many artistic chickens scattered throughout the downtown area. One is decorated to commemorate the 2014 Seahawk Superbowl Champions. Walk out of town to Winolequa Park along Olequa Creek. The 4th weekend of June is the annual Egg Festival.

Walk Registration

Registration takes place online using the AVA Online Start Box at my.ava.org. Follow the instructions provided to create a user account and sign the AVA waiver (one time). Instructions for payment are also included. Download the directions and print as needed.

Walk Completion and Walk Credit

Once you have physically completed the walk, please login to your Online Start Box account; click on the "My Start Box" tab; then the "Finish Table" tab; then click on "Go to Finish Table" button for the event you have completed. Use the displayed entry form to submit the date and distance of your walk as well as select applicable AVA Special Programs to generate a stamped "virtual" insert card that you may print.

Table of Contents:

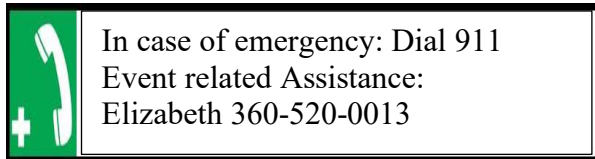
Use the following table to guide what portion of this document you may wish to print.

Section Contents	Pages
Introduction, Walk Registration/Completion, and Table of Contents	1
Walking Winlock Driving & Walking Directions 10K	2-3
Walking Winlock Map 10K	4
Walking Winlock Driving & Walking Direction 5K	5
Walking Winlock Map 5K	6
AVA Special Programs applicable to Walking Winlock	7



© Capitol Volkssport Club, Olympia, WA 2020. These walk directions and map may only be used in conjunction with a signed American Volkssport Association athletic waiver. All other uses are prohibited.

WALKING WINLOCK YRE WALK# 791



Distance: 10K

Difficulty level: 2A

ESVA Challenges: 39 Counties

Start Point: Kerron St., Winlock, WA 98596

Lat: 46.491710, Lng: -122.937916.

Driving Directions: From north or southbound on I-5, take exit 63. Northbound turn left.

Southbound turn right. Proceed to Winlock on SR 505. SR 505 becomes E. Walnut in Winlock.

Continue on E. Walnut to Kerron. Turn right on Kerron (Old Highway 603). Immediately you will see a large gravel lot on your right. Park in the lot being sure to lock your car. **CAUTION:** Many roads are rural country roads. Some have no shoulder and, although there is little traffic, cars do not expect to see walkers. Caution and single file in those areas are recommended.

1. From parking area, walk toward the colorful rooster and World's Largest Egg (located along Fir Street).
2. **RIGHT** on Fir Street, crossing RR tracks, 2 blocks to NE 1st Street.
3. **RIGHT** on NE 1st Street to E. Walnut. You will pass the City Hall. (**Restrooms** available M-F 8:30 – 4:30.)

4. **LEFT** to **CROSS** 1st Street. Then **IMMEDIATE RIGHT** to **CROSS** E. Walnut, continuing on 1st Street to SE Cowlitz Road on your left.
5. **LEFT** on SE Cowlitz Road walking carefully up the hill (**suggest walking single file - no shoulder or sidewalk**) to the Winlock Cemetery.
6. **LEFT** (by Do Not Enter sign) into the cemetery walking to first right turn in road back to Cowlitz Road.
7. **CROSS** and **RIGHT** on Cowlitz back to 1st Street.
8. **LEFT** on 1st, walking 8 short blocks to Campbell Street.
9. **RIGHT** on Campbell Street (crossing 1st) 1 block to SE Front Street (unmarked).
10. **RIGHT** on Front Street. You will pass several interesting homes including: a home built like a RR station at 1012 Front Street; the NRHP home of John A. Adams, a founding father of Winlock, at 710 Front Street; and the Veness Mansion taking up one square block at 602 Front Street. Continue on Front Street as it veers left to Walnut Street.
11. **LEFT** on Walnut Street (crossing RR tracks, Kerron Street, and a bridge) to NW Arden Street.
12. **RIGHT** crossing Walnut on NW Arden 2 blocks to Fir Street.
13. **CROSS** Fir Street to NW King Road.
14. **CONTINUE** on King Road, passing school on left, going up the hill to Grant Avenue.
15. **LEFT** on Grant Avenue to Columbia Avenue.
16. **LEFT** on Columbia Avenue to Shannon Lewis Lane.
17. **RIGHT** on Shannon Lewis Lane to Clark Avenue.
18. **LEFT** on Clark Avenue to Dexter Avenue. (No shoulder in this area and some parts relatively steep.)
19. **RIGHT** on Dexter Avenue to NW Washington Street.
20. **LEFT** on Washington to Benton Avenue.
21. **CROSS** and **RIGHT** on Benton Avenue to Walnut Street.
22. **CROSS** and **LEFT** on Walnut Street 4 blocks, carefully crossing Kerron Street and RR tracks to 1st Street.
23. **CROSS** 1st and **IMMEDIATE LEFT** crossing Walnut Street. Continuing on 1st, you will pass US Post Office, Winlock Timberland Library (**Restrooms** at library Tues – Sat 10-5), and the

Winlock Historical Museum (check in library to see if Museum is open.)

24. **CONTINUE** on 1st Street up hill. 1st Street becomes Rhodes Road at the end of the sidewalk. The rest of the road has no sidewalk and very little shoulder. **USE EXTREME CAUTION.**

25. **FOLLOW** Rhodes Road past The Renegade Rooster, a fun little museum. Stop by and view the collection of Winlock memorabilia. Just around the corner, there is a great view of Mt. Rainier on a clear day.

26. **LEFT** on Rhodes Road N, walking downhill to Winolequia Park (**Restrooms** available at entrance from March until the first freeze).

27. **TURN AROUND** at restrooms and return up the hill to Rhodes Road.

28. **CROSS** and **RIGHT** on Rhodes Road following it as it becomes 1st Street to Griffith Street.

29. **CROSS** 1st Street on crosswalk at Griffith.

30. **LEFT** on 1st to Fir Street.

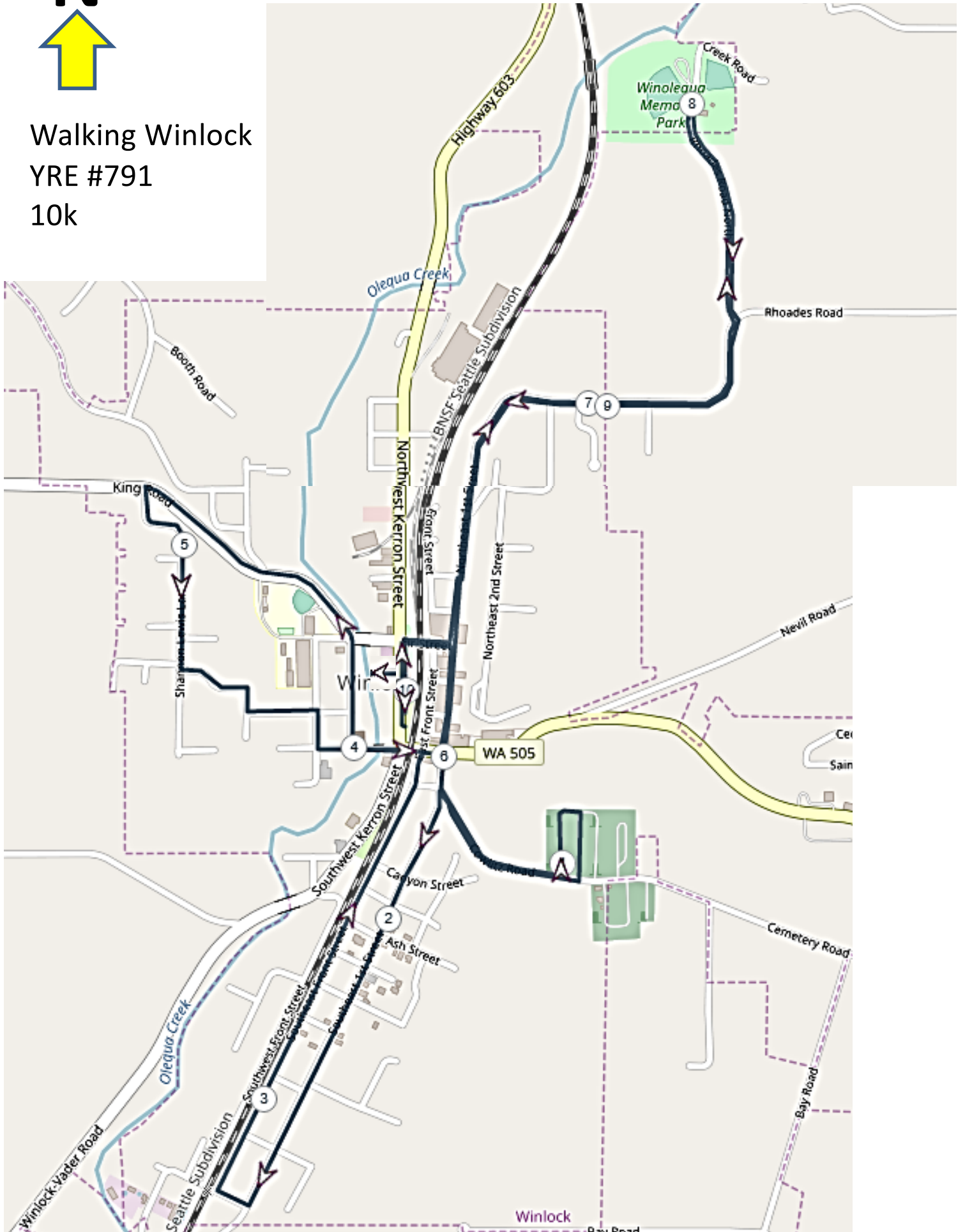
31. **RIGHT** on Fir Street back to your car.

We hope you enjoyed your walk!

Don't forget to log back into the OSB system to "finish/complete" your online registration.



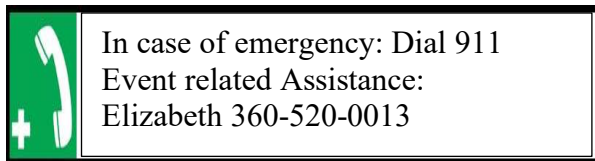
Walking Winlock
YRE #791
10k





© Capitol Volkssport Club, Olympia, WA 2020. These walk directions and map may only be used in conjunction with a signed American Volkssport Association athletic waiver. All other uses are prohibited.

WALKING WINLOCK YRE WALK# 791



Distance: 5K

Difficulty level: 2A

ESVA Challenges: 39 Counties

Start Point: Kerron St., Winlock, WA 98596

Lat: 46.491710, Lng: -122.937916.

Driving Directions: From north or southbound on I-5, take exit 63. Northbound turn left.

Southbound turn right. Proceed to Winlock on SR 505. SR 505 becomes E. Walnut in Winlock.

Continue on E. Walnut to Kerron. Turn right on Kerron (Old Highway 603). Immediately you will see a large gravel lot on your right. Park in the lot being sure to lock your car. **CAUTION:** Many roads are rural country roads. Some have no shoulder and, although there is little traffic, cars do not expect to see walkers. Caution and single file in those areas are recommended.

1. From parking area, walk toward the colorful rooster and World's Largest Egg (located along Fir Street).
2. **RIGHT** on Fir Street, crossing RR tracks, 2 blocks to NE 1st Street.
3. **RIGHT** on NE 1st Street to E. Walnut. You will pass the City Hall. (Restrooms available M-F 8:30 – 4:30.)

4. **LEFT** to **CROSS** 1st then **IMMEDIATE RIGHT** to **CROSS** E. Walnut, continuing on 1st Street to SE Cowlitz Road on your left.
5. **LEFT** on SE Cowlitz Road walking carefully up the hill (**suggest walking single file - no shoulder or sidewalk**) to the Winlock Cemetery.
6. **LEFT** (by Do Not Enter sign) into the cemetery walking to first right turn in road back to Cowlitz Road.
7. **CROSS** and **RIGHT** on Cowlitz back to 1st Street.
8. **LEFT** on 1st, walking 8 short blocks to Campbell Street.
9. **RIGHT** on Campbell Street (crossing 1st) 1 block to SE Front Street (unmarked).
10. **RIGHT** on Front Street. You will pass several interesting homes including: a home built like a RR station at 1012 Front Street; the NRHP home of John A. Adams, a founding father of Winlock, at 710 Front Street; and the Veness Mansion taking up one square block at 602 Front Street. Continue on Front Street as it veers left to Walnut Street.
11. **RIGHT** on Walnut Street to 1st Street.
12. **CROSS** 1st and **IMMEDIATE LEFT** crossing Walnut Street. Continuing on 1st you will pass the US Post Office, Winlock Timberland Library (**Restrooms** at library Tue-Sat 10 - 5), and the Winlock Historical Museum. (Check in library to see if Museum is open.)
13. **CONTINUE** on 1st Street to NE Griffith Street.
14. **LEFT** at Griffith to cross 1st on sidewalk.
15. **IMMEDIATE LEFT** on 1st 2 blocks to Fir Street.
16. **CROSS** and **RIGHT** on Fir to Kerron.
17. **CROSS** Kerron and **IMMEDIATE RIGHT** to **CROSS** Fir Street.
18. **CONTINUE** on Kerron ½ block to Winlock Community Building, built by WPA in 1938.
19. **TURN AROUND**, retracing your steps to Fir Street.
20. **CROSS** Fir then **IMMEDIATE LEFT** to **CROSS** Kerron back to your car.

We hope you enjoyed your walk!

Don't forget to log back into the OSB system to "finish/complete" your online registration.



Walking Winlock
YRE #791
5k

