



Tualatin – Brown’s Ferry

Event # 115719 – 2020 Y0798

10 km (Two 5 km Loops)

This walk is comprised of two (2) 5 km loops. The route marked “long,” Loop 1, is just a bit longer than the other loop and is rated 1B. Loop 2 is rated 1A. We have included a modification to the longer loop in case of muddy weather.

DRIVING TO WALK START: Legacy Meridian Park Medical Center, 19300 SW 65th Ave, Tualatin, OR 97062. I-5 North or South, take Exit 289. North turns right and South turns left onto SW Nyberg Street. Continue as it bends right and becomes SW 65th Ave. Just before the top of the hill, turn left into hospital complex. Follow signs to hospital’s main entrance. Parking in hospital lot, avoiding spaces designated for patients or staff.

RESTROOMS: During this unusual time, it’s difficult to count on restrooms being available. We recommend stopping at a grocery before starting the walk. *Restrooms are not available in the hospital. They may be open in the parks.*

Please use either the Online Start Box (OSB) or Physical Start Box (PSB) to register and complete the event. Do NOT mix and match, for example, by registering using the OSB then completing your event using the PSB or signing the PSB log sheet. The sponsoring club only receives credit for an OSB participation when an OSB registration has been completed online by entering your participation date, distances, and any special programs using the OSB.

"Be sure to log back into the OSB system (my.ava.org) to finish/complete your online registration after doing the walk. The OSB system does not deduct any walking fee from a walker's event bank until they have submitted walk completion info including the date the event was walked, the distance walked, and the selection of applicable special programs in which the walker is participating. (Nevertheless, a fee of \$2 for a downloaded pdf is deducted from the user's Event Bank when the pdf is downloaded. Later, any pdf fees are credited back to a walker's Event Bank when he/she submits the walk completion info as a paying-for-credit walker). The \$2 "coupon" for the downloaded pdf expires in 60 days."

Table of Contents: Use the following table to guide which portion of this document you may wish to print.

| | |
|--|---|
| Walk Description, Driving Instructions, Walk Completion..... | 1 |
| Loop 1, 5 km (long) Instructions and Map | 2 |
| Loop 1, 5 km (long) Instructions and Map modified for when muddy | 3 |
| Loop 2, 5 km (short) Instructions and Map | 4 |



Tualatin – Brown’s Ferry

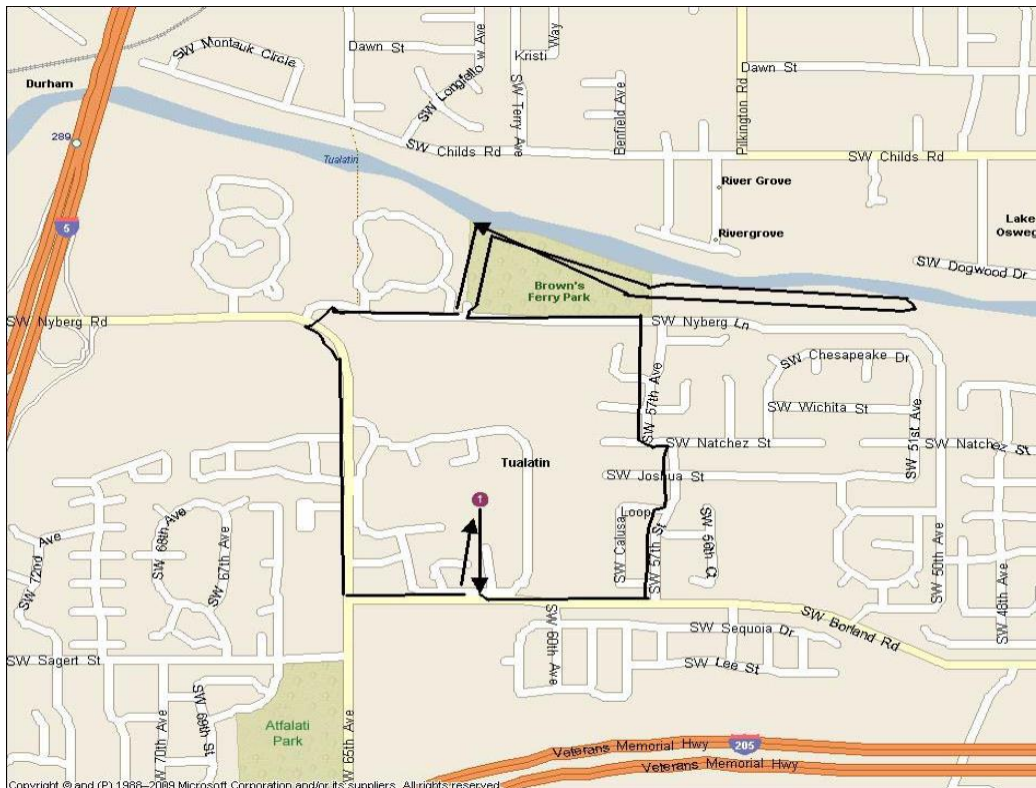
Event # 115719 – 2020 Y0798

10 km (Two 5 km Loops)

Loop 1 – 5 KM (Long)
Rated 1B

Modified to avoid muddy areas

1. Exit Main Entrance and LEFT onto sidewalk.
2. STAY on sidewalk to parking lot that faces Borland Rd.
3. LEFT on Borland Rd.
4. LEFT on 57th Ave.
5. LEFT on Natchez St.
6. RIGHT on 57th again and continue downhill.
7. CROSS Nyberg Ln., then turn LEFT and pass the park pond on right.
8. RIGHT at first cement path after the pond.
9. RIGHT on gravel path, pass 2 pair of park benches, keep pond on right and cross bridge.
10. Keep RIGHT on gravel path to street.
11. LEFT at the street to community center sign.
12. LEFT at community center on cement path.
13. Stay on cement path to where it becomes a steep asphalt road at the fenced-in green pumping station.
14. TURN AROUND and retrace cement path to community center. Path bends left to street.
15. RIGHT at street to THIRD gravel path on right, marked with a vertical wooden post.
16. RIGHT onto gravel path toward river.
17. CONTINUE on gravel path as it bends left and crosses bridge.
18. RIGHT on cement path.
19. CROSS bridge and continue on cement path passing old barn.
20. Go past boat ramp (restrooms are 130 yards down concrete path across from boat ramp, next to parking lot) and straight across onto boardwalk.
21. RIGHT at end of trail at Nyberg Lane (unmarked).
22. CROSS 65th Ave./ Nyberg Street at light.
23. LEFT on 65th Ave crossing entrance to 7-Eleven at light
24. At top of the hill, LEFT on Borland Rd at light.
25. LEFT at first parking lot.
26. Enter hospital campus between buildings marked 6485 and 6475.
27. Follow sidewalk to hospital Main Entrance.





Tualatin – Brown’s Ferry

Event # 115719 – 2020 Y0798

10 km (Two 5 km Loops)

Loop 2, Atfalati Park – 5 KM (short) Rated 1A

1. LEFT on sidewalk outside of Main Entrance.
2. Stay on sidewalk as it veers to the left to the parking lot that faces Borland Rd.
3. Walk through parking lot and exit onto Borland Rd.
4. RIGHT onto Borland Rd.
5. Cross and LEFT at 65th Ave (at lights).
6. Cross Sagert St at Atfalati Park.
7. RIGHT at “Y” on sidewalk (softball backstop will be in front of you). Keep ballpark on left.
8. Go out of park and cross Wampanoag Dr.
9. RIGHT on 69th Ave.
10. RIGHT on Ottawa St.
11. LEFT on 70th Ave.
12. RIGHT on Algonkin St. (1K)
13. LEFT on 71st Ave.
14. RIGHT on Delaware St./70th Ave turns into Delaware Circle.
15. STRAIGHT at Delaware Circle and Delaware Circle
16. Follow Delaware Circle bending left
17. RIGHT on Delaware St again (continue downhill).
18. RIGHT on Potomac St. (2K)
19. LEFT on 69th Ave.
20. RIGHT on Wampanoag Dr.
21. RIGHT into first park entrance.
22. RIGHT at first “Y” (bathroom at top of hill on left).
23. Stay to right and walk outside perimeter of park.
24. Exit park and cross Sagert St. (3K)
25. Continue on 65th Ave to Borland Rd.
26. RIGHT on Borland Rd to hospital.
27. LEFT at first parking lot.
28. Enter hospital campus between buildings marked 6485 and 6475.
29. Follow sidewalk to hospital Main Entrance.

